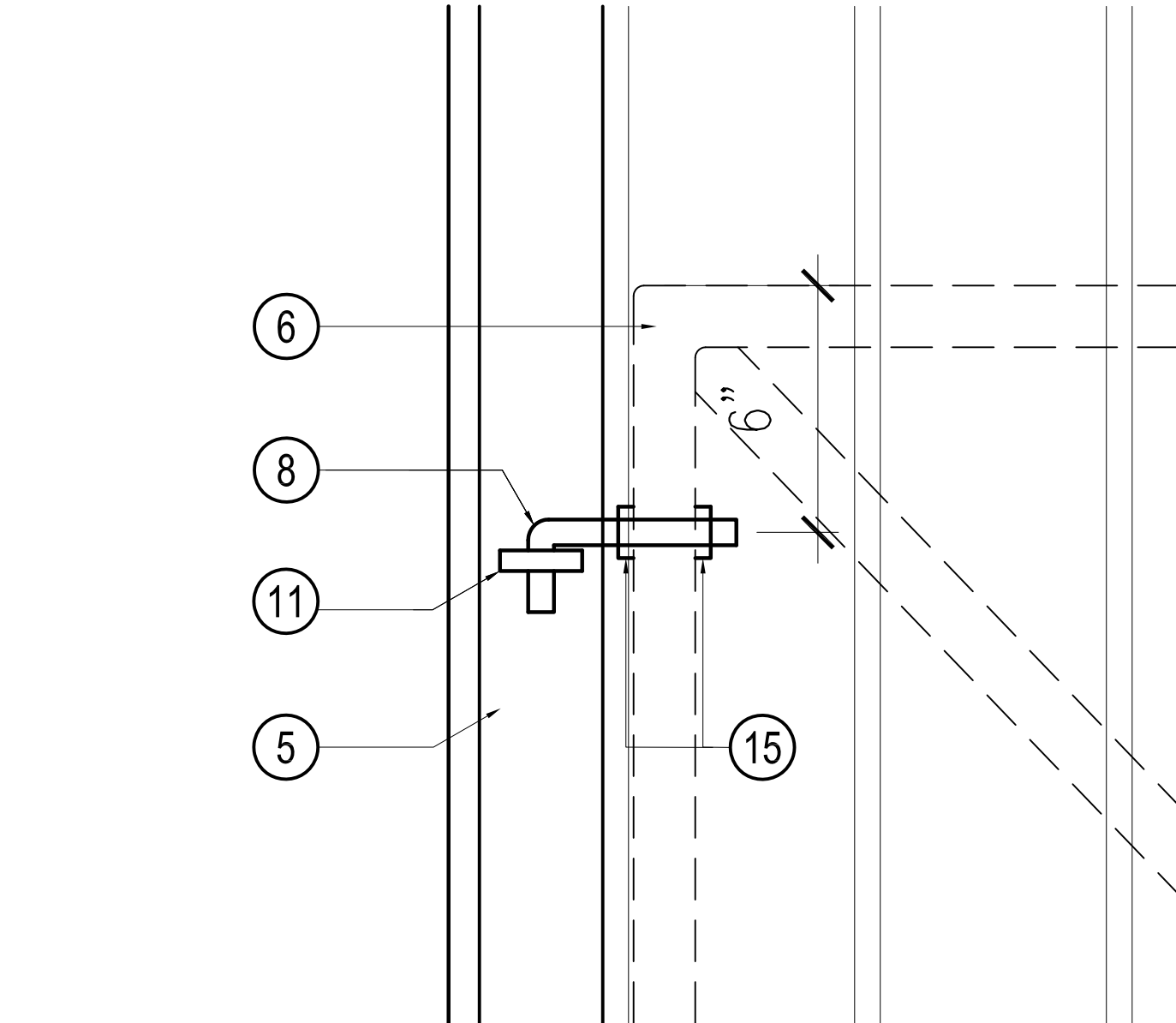
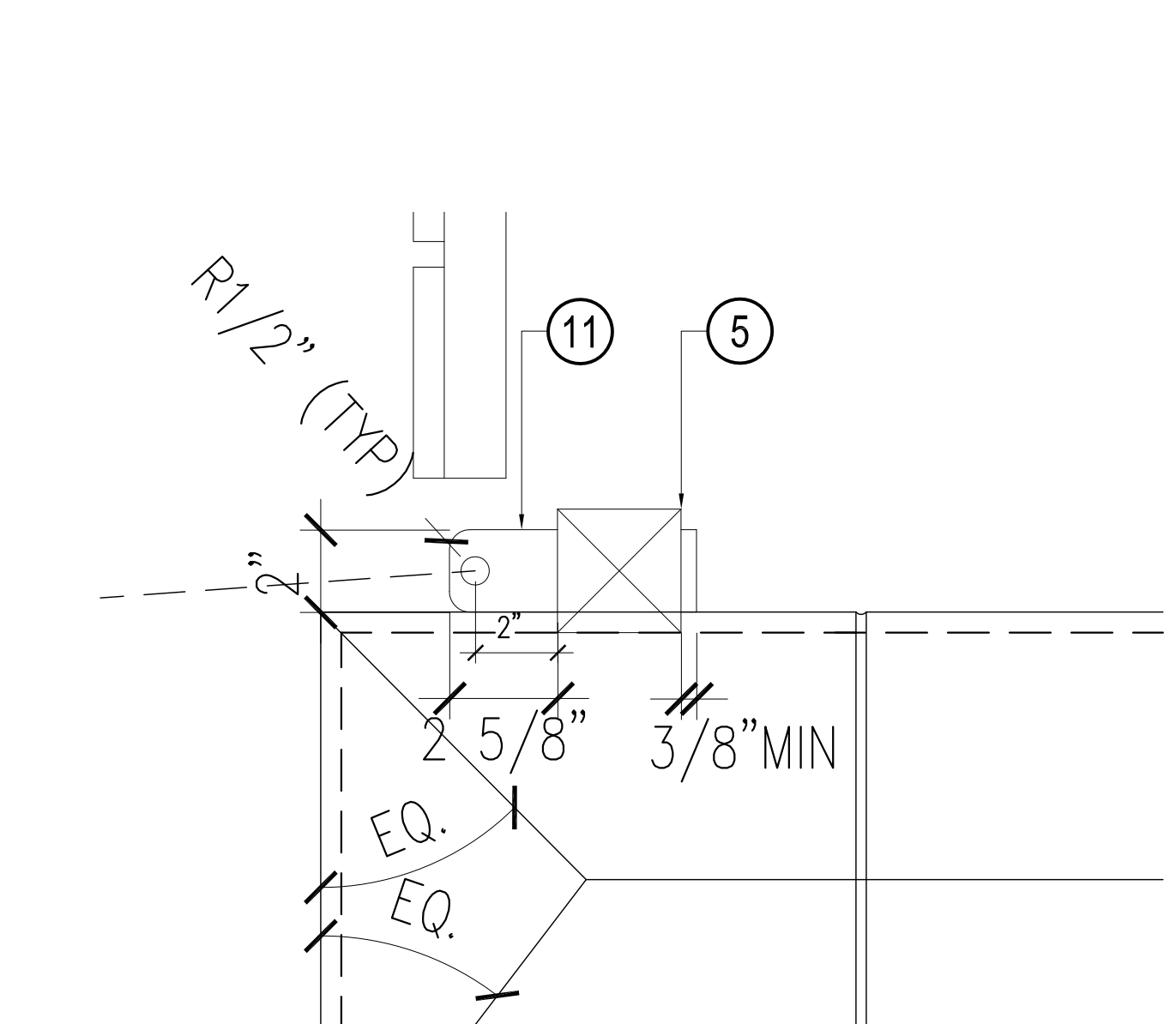


GATE FOOTING SECTION 14
SCALE: 1/2" = 1'-0"
DT_MW_10

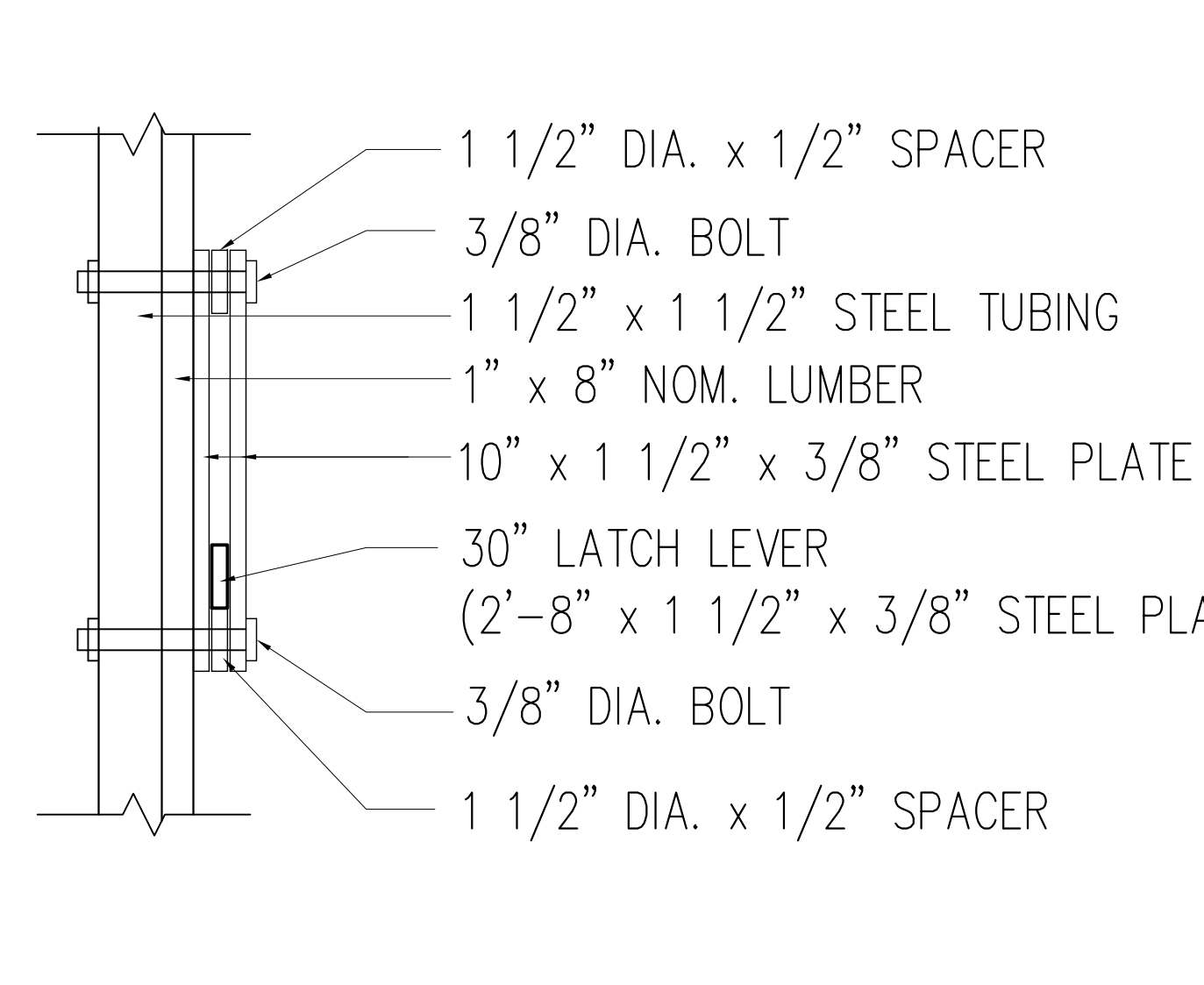
WALL FOOTING SECTION 10
SCALE: 1/2" = 1'-0"
DT_MW_10



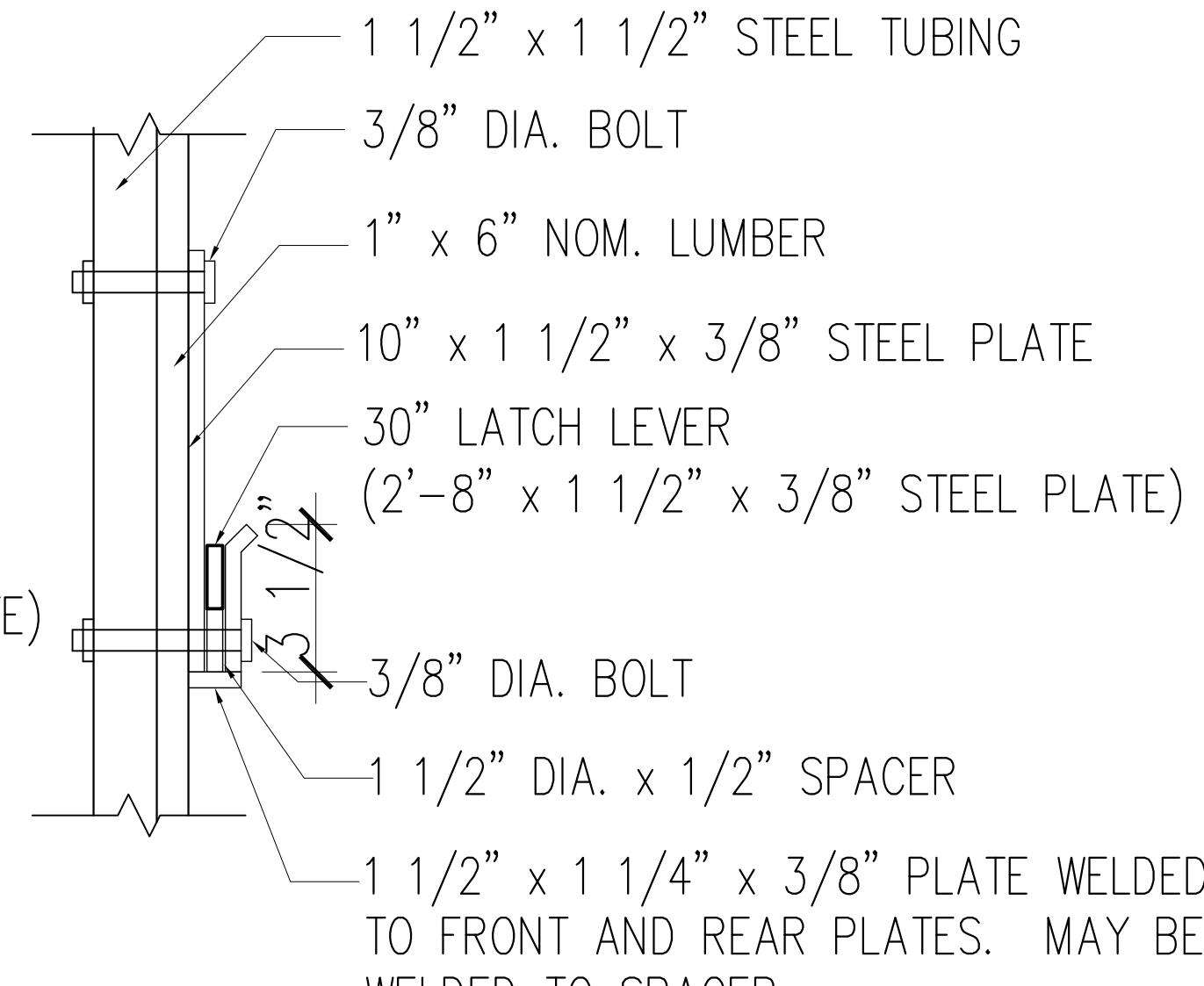
ADJUSTABLE HINGE DETAIL 05
SCALE: 3" = 1'-0"
WS_TRASH



HINGE TAB DETAIL 01
SCALE: 3" = 1'-0"
WS_TRASH

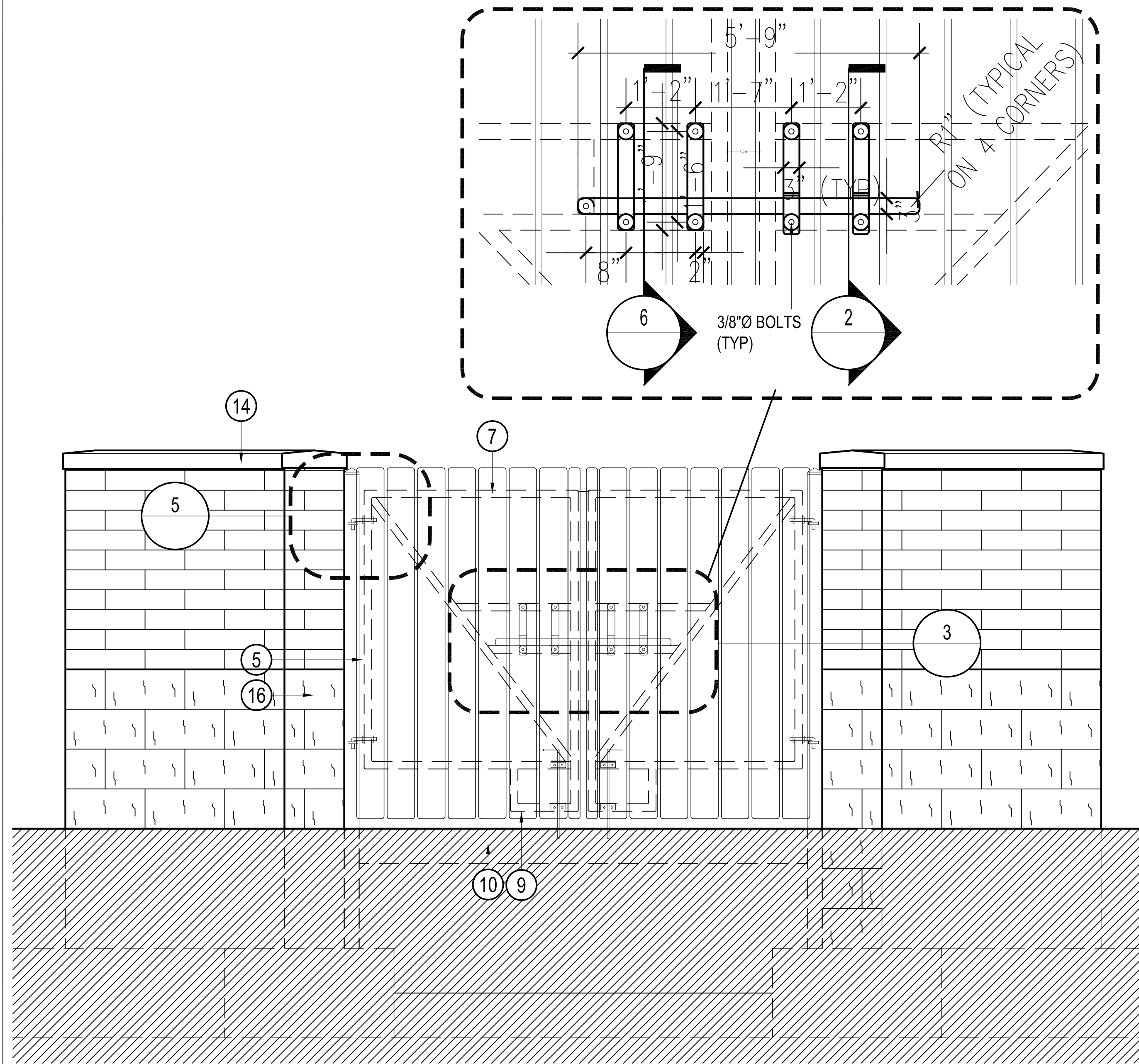


GATE LATCH DETAIL 06
SCALE: 3" = 1'-0"
WS_TRASH

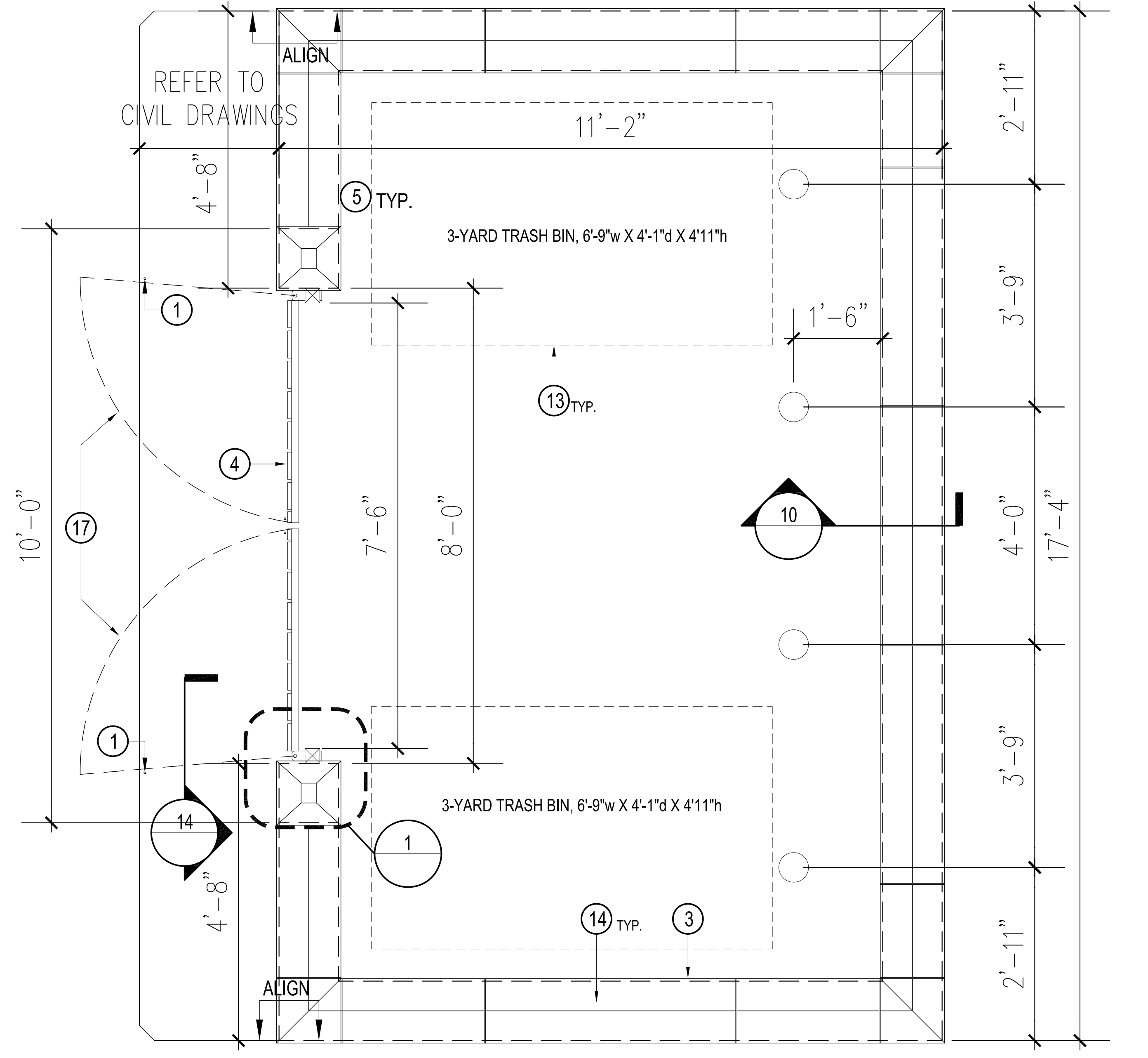


GATE LATCH DETAIL 02
SCALE: 3" = 1'-0"
WS_TRASH

- ① LOCATE CANE BOLT HOLES SO GATES IN OPEN POSITION ARE HELD OUT GREATER THAN 90° (TYP). VERIFY WITH TRASH COLLECTION AGENCY.
- ② CANE BOLT HOLES FOR GATE IN CLOSED POSITION (TYP.).
- ③ 1/2" EXPANSION JOINT MATERIAL AROUND ALL FOOTING FOUNDATIONS.
- ④ CONCRETE SLAB, RE: STRUCTURAL DRAWING.
- ⑤ 3" X 3" SQUARE STEEL TUBE WITH DRIVE ON CAPS.
- ⑥ 1 1/2" X 1 1/2" SQUARE STEEL TUBE. SHOP WELD ALL JOINTS.
- ⑦ NOM. 1" X 6" RECYCLED PLASTIC LUMBER, WITH 5/8" GAP BETWEEN BOARDS.
- ⑧ 5/8" ADJUSTABLE HINGE (TYPICAL 4 LOCATIONS).
- ⑨ (4) 3" L. 1 1/2" X 3/8" WITH (2) 3/8" Ø BOLTS
- ⑩ (2) 21" L. (MIN.) 3/8" Ø RODS W. MIN. 3" HOOK. DRILL HOLES IN CONCRETE TO LOCK GATES OPEN AND CLOSED POSITIONS.
- ⑪ 6" X 2" X 1/2" FLAT HINGE TAB EXTENDED THROUGH AND WELDED TP POST & BACK.
- ⑫ PROVIDE GATE LATCH AS DETAILED.
- ⑬ 48" HIGH, 4" DIA. PAINTED STEEL PIPE BOLLARD FILLED WITH CONCRETE.
- ⑭ PRECAST CONCRETE CAP STONE, WITH INTEGRAL DRIP EDGE, TO MATCH THAT OF BANK BUILDING.
- ⑮ ADJUSTING NUT & WASHERS.
- ⑯ BRICK MASONRY UNITS & MORTAR TO MATCH THAT OF BANK BUILDING.
- ⑰ PAINT KONA FROM AZELINE. COORDINATE WITH OWNER.



TRASH ENCLOSURE ELEVATION 12
SCALE: N.T.S.
DT_MW_10



TRASH ENCLOSURE PLAN 04
SCALE: N.T.S.
DT_MW_10

A. REFER TO STRUCTURAL DRAWING FOR ALL STRUCTURAL DETAILS AND NOTES REGARDING THE DUMPSTER ENCLOSURE.

B. THE SIZE OF THE ENCLOSURE HAS BEEN MODIFIED TO ALLOW FOR ARCHITECTURAL FINISHES.

Bank of America Rochester Hills New Store

NW Corner of
Adams Rd. & Marketplace Circle
Rochester Hills, MI 48309

SERIAL NUMBER: MWC0190
NRSP VERSION: 2.0
BULLETIN: 38 / DD-34

Architect



Nelco Architecture, Inc.
a licensed affiliate

1201 Marquette Avenue South - Suite 200
Minneapolis, MN 55403
Phone: (612) 822-1211
Fax: (612) 822-1006

Issue	Date & Issue Description	By	Check
02/27/12	PLANNING SUBMITTAL	JWW	
05/05/12	DO REVIEW SET	JWW	
08/20/12	80% REVIEW SET	JWW	
09/17/12	ISSUE FOR PERMIT	JWW	

Seal/Signature

Project Name
Rochester Hills Bank of America

Prototype Layout
Medium - Side Drive-Up

NELSON Project Number
12.00043.00

Description
TRASH ENCLOSURE (BRICK)

Scale

A09.11C

Bank of America Rochester Hills New Store

NW Corner of
Adams Rd. & Marketplace Circle
Rochester Hills, MI 48309

SERIAL NUMBER: MWC0190
NRSP VERSION: 2.0
BULLETIN: 38 / DD-34

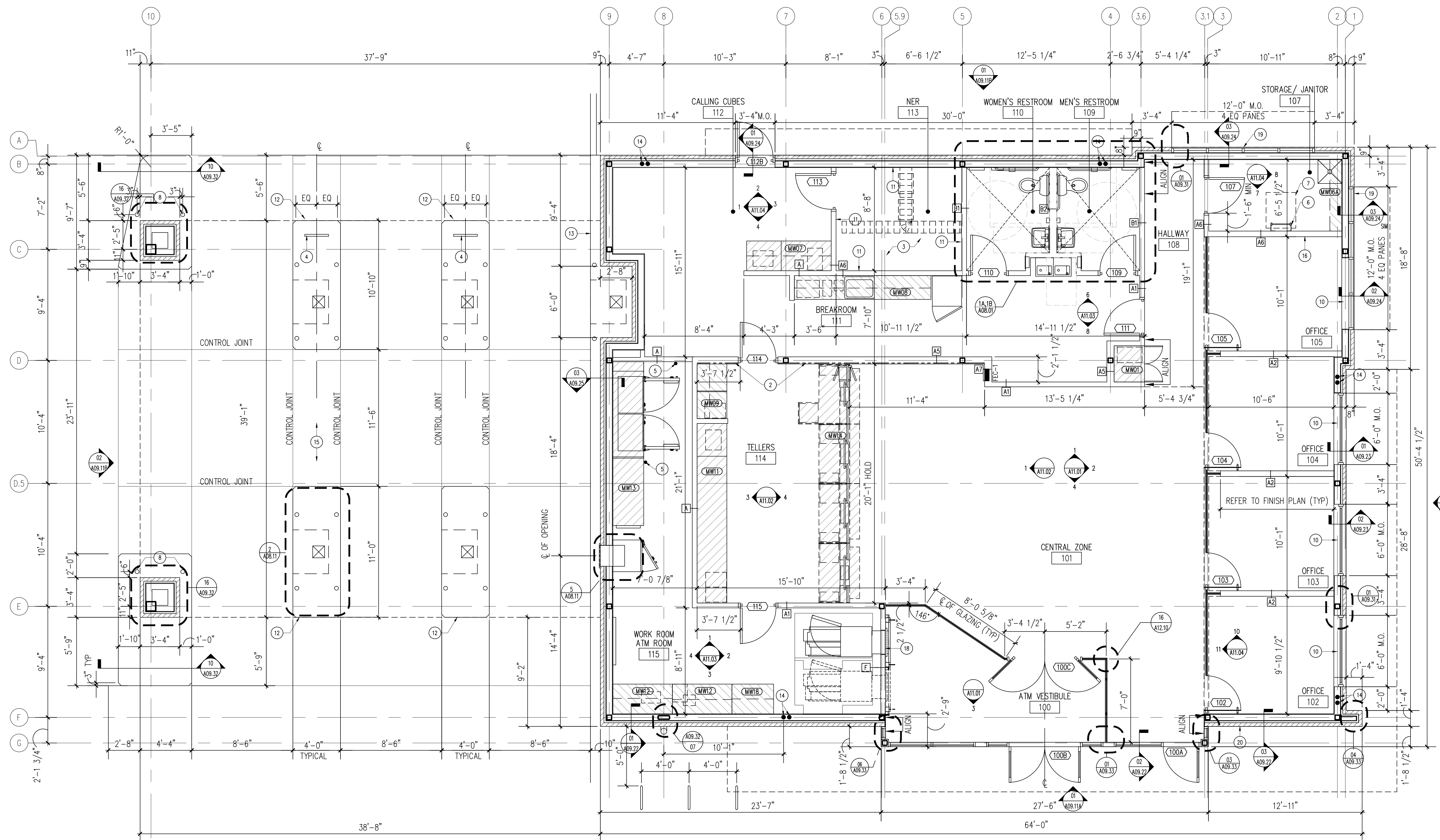
Architect



Nelco Architecture Corp.
a licensed affiliate

1201 Marquette Avenue South - Suite 200
Minneapolis, MN 55403
Phone: (612) 822-1211
Fax: (612) 822-1006

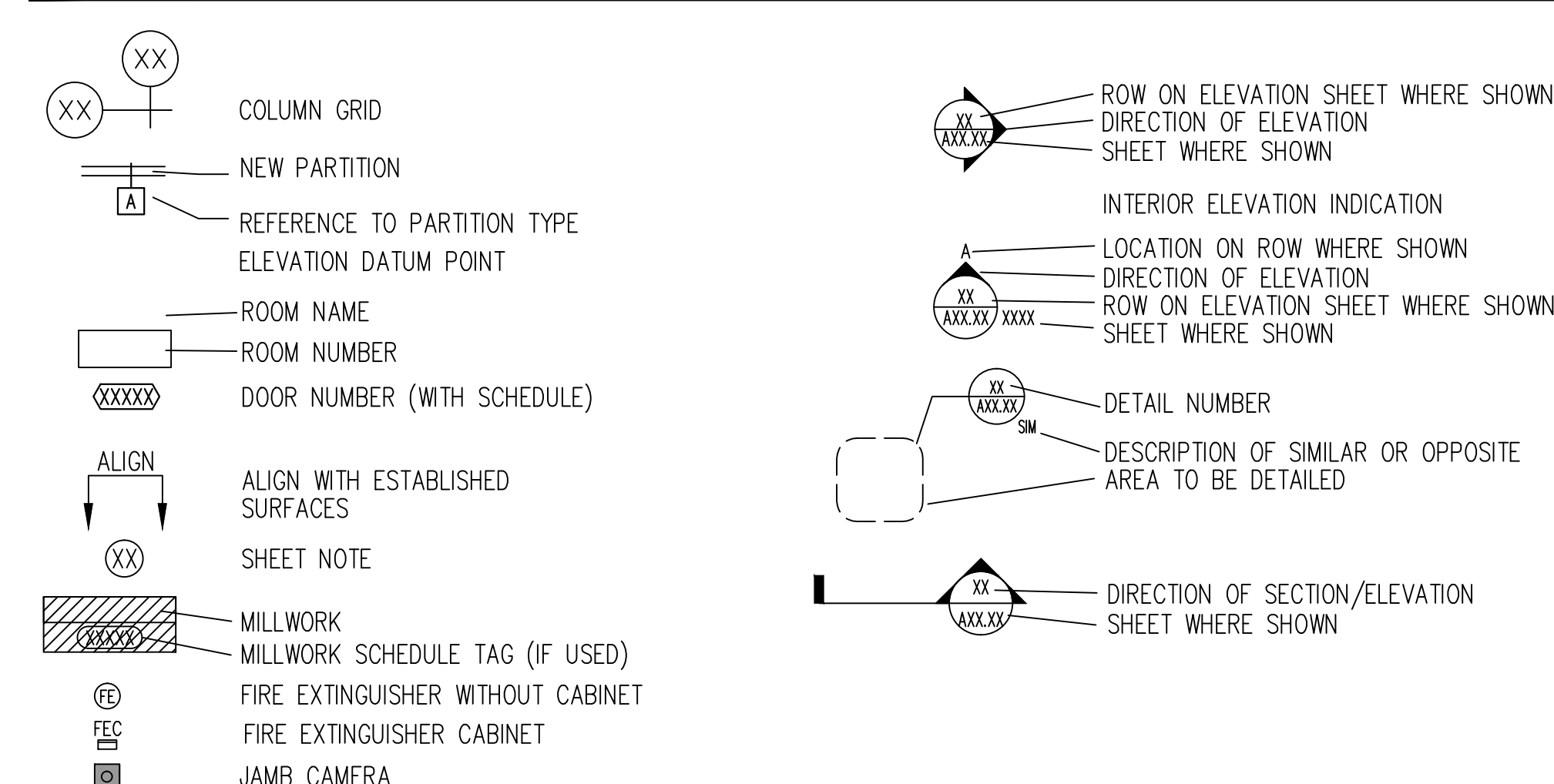
Issue	Date & Issue Description	By	Check
02/27/12	PLANNING SUBMITTAL	JWW	
05/05/12	DD REVIEW SET	JWW	
08/20/12	80% REVIEW SET	JWW	
09/17/12	ISSUE FOR PERMIT	JWW	



KEYNOTES

- 1 NOT USED
- 2 KEVLAR REINFORCED WALL PER A12.08
- 3 PROVIDE FIRE-RATED PLYWOOD BACKBOARD AS INDICATED IN ELEVATIONS, H=8'-0". PAINTED P-1 DO NOT PAINT FIRE RATING STAMP
- 4 GROUND MOUNTED SIGN BY OWNER
- 5 PROVIDE HEAVY DUTY FLOOR STOP PER SPEC-COORDINATE LOCATION WITH CASH VAULT DOOR.
- 6 LADDER TO ROOF HATCH - SEE DETAIL 12/A09.32
- 7 ROOF HATCH ABOVE - SEE DETAIL 8/A09.32
- 8 BOLLARD - SEE DETAIL 9/A09.32
- 9 NOT USED
- 10 ROLLER SHADE
- 11 NO PAINT REQUIRED ON THIS WALL. TAPE JOINTS ONLY
- 12 ALIGN EDGE OF D.T. ISLAND WITH LINE OF DRIVE THRU SOFFIT ABOVE
- 13 HEADER CURB - 10" WIDE AGAINST BUILDING
- 14 CLEAN OUT LOCATION 24" AFF, REFER TO PLUMBING DRAWINGS.
- 15 REFER TO CIVIL DRAWINGS FOR SLOPE DIRECTION.
- 16 PROVIDE 3/4" FIRE TREATED PLYWOOD BEHIND GWS SIMILAR TO PARTITION TYPE A2
- 17 NOT USED
- 18 ACCESSIBLE ATM SHALL COMPLY WITH ADAAG 2010 VERSION
- 19 SPANDREL GLASS IN ALUM FRAME
- 20 KNOX BOX- COORDINATE FINAL LOCATION W/ FIRE MARSHAL

GRAPHIC SYMBOLS



SHEET NOTES

- A. ALL PARTITIONS TO BE TYPE "A", UNLESS OTHERWISE NOTED. REFER TO SHEET A12.01.
- B. FOR ADDITIONAL GENERAL NOTES, LEGENDS AND SCHEDULES, REFERENCE A00.00.
- C. UNLESS OTHERWISE NOTED, LOCATE HINGE SIDE OF ALL DOORS 6" FROM ADJACENT PERPENDICULAR PARTITION.
- D. REFER TO DRAWING A08.11 FOR BANKING EQUIPMENT, VERIFY ALL EQUIPMENT WITH VENDOR.
- E. CONTRACTOR SHALL PROVIDE BLOCKING FOR ALL EQUIPMENT AND ACCESSORIES MOUNTED ON WALLS.

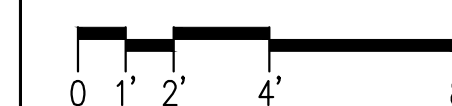
Seal/Signature

Project Name
Rochester Hills Bank of America

Prototype Layout
Medium - Side Drive-Up
NELSON Project Number
12.00043.00

Description
CONSTRUCTION PLAN

Scale



A02.01



Bank of America Rochester Hills New Store

NW Corner of
Adams Rd. & Marketplace Circle
Rochester Hills, MI 48309

SERIAL NUMBER: MWC0190
NRSP VERSION: 2.0
BULLETIN: 38 / DD-34

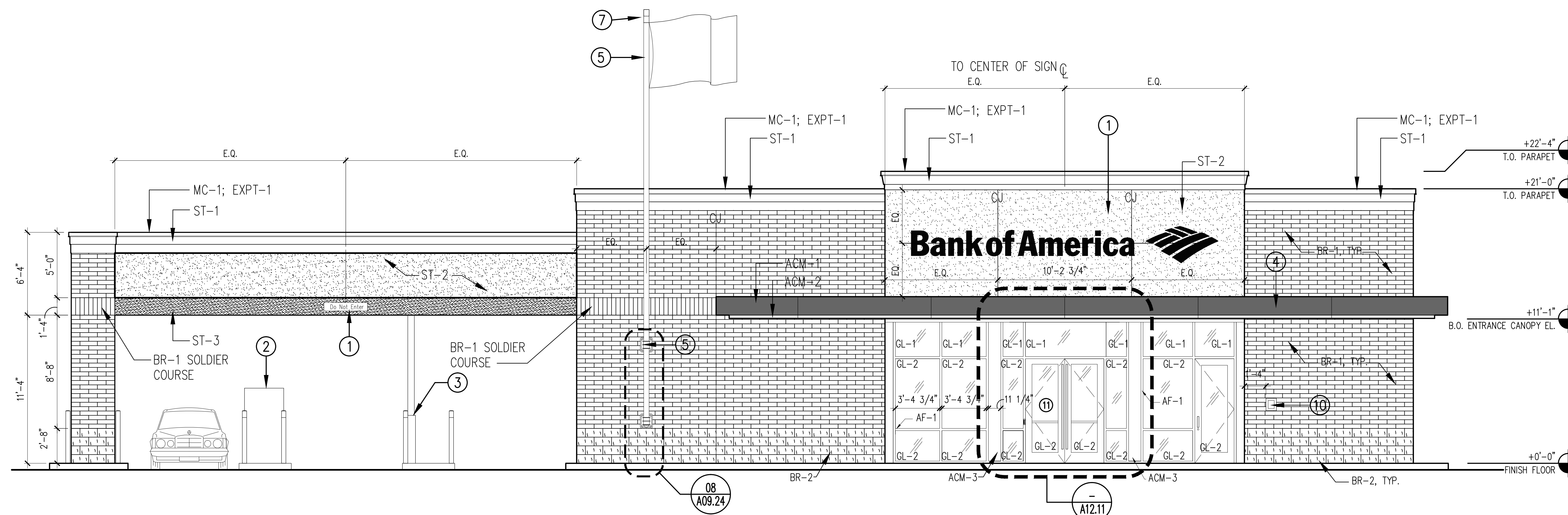
Architect



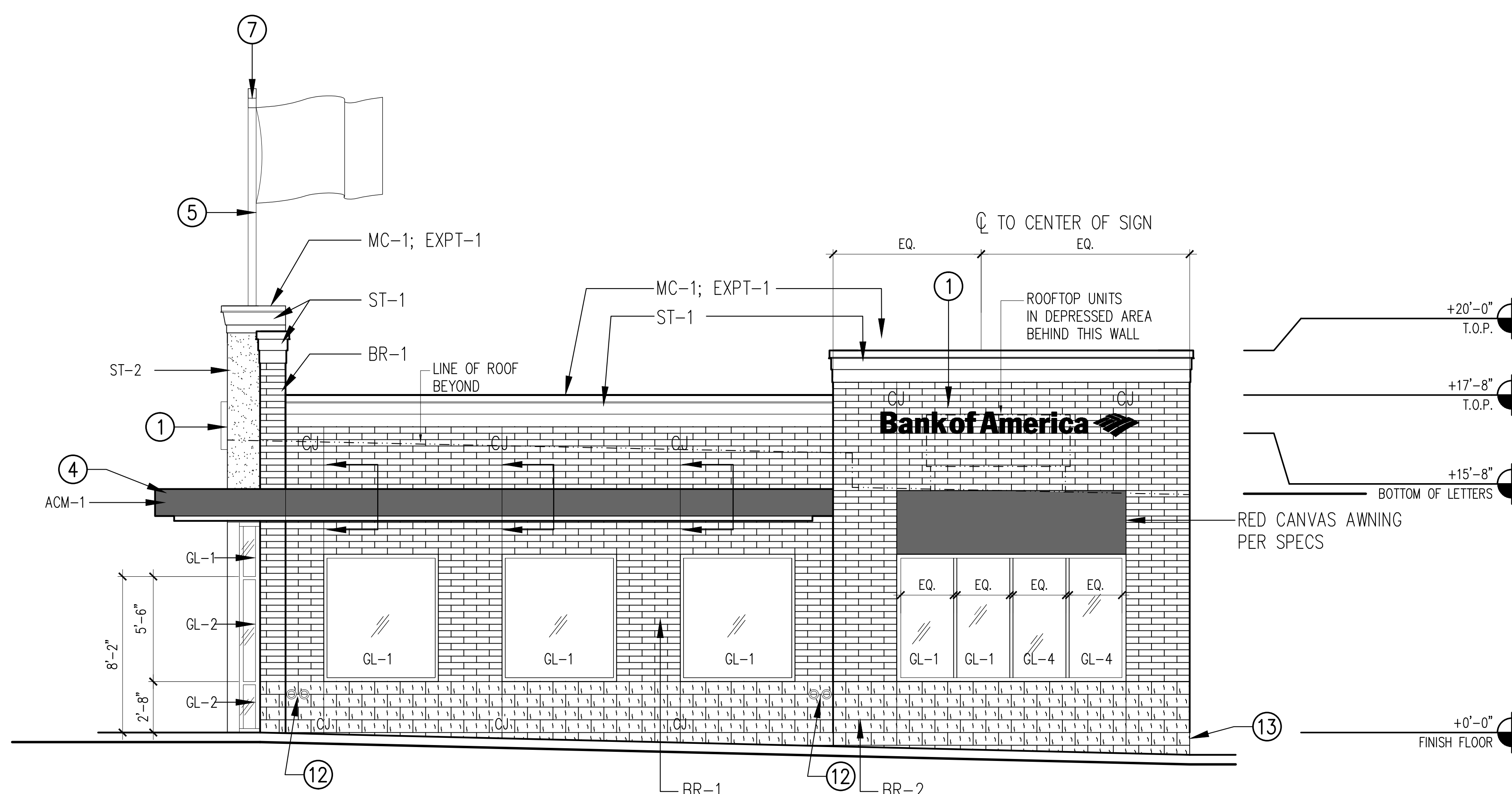
Nelco Architecture Corp.
a licensed affiliate

1201 Marquette Avenue South - Suite 200
Minneapolis, MN 55403
Phone: (612) 822-1211
Fax: (612) 822-1006

Issue	Date & Issue Description	By	Check
02/27/12	PLANNING SUBMITTAL	JWW	
05/05/12	DD REVIEW SET	JWW	
08/20/12	80% REVIEW SET	JWW	
09/17/12	ISSUE FOR PERMIT	JWW	



01 FRONT ELEVATION
1/4" = 1'-0"



02 SIDE ELEVATION
1/4" = 1'-0"

KEYNOTES

- 1 BANK OF AMERICA SIGN BY OWNER
- 2 DRIVE THROUGH ATM
- 3 VACUUM AIR TUBE (VAT)
- 4 METAL PANEL SYSTEM
- 5 30' FLAG POLE AND MOUNTING BRACKETS - PROVIDED BY CONTRACTOR (FLAG FURNISHED BY OWNER, INSTALLED BY CONTRACTOR)
- 6 S3 MONIGLE SIGNAGE PROVIDED BY OWNER. CENTERLINE OF SIGN = CENTERLINE OF LANE.
- 7 LIGHT FIXTURE MOUNTED ON TOP OF FLAG POLE. SEE ELECT. DWG. FOR FIXTURE TYPE.
- 9 NOT USED
- 10 COORDINATE WITH FIRE OFFICIAL THE MOUNTING HEIGHT AND LOCATION OF KNOX BOX PRIOR TO INSTALLATION.
- 11 SIGNAGE ON DOOR THAT READS "NO SMOKING WITHIN 25 FEET OF THE ENTRANCE" PROVIDED BY OWNER.
- 12 CLEAN OUT LOCATIONS
- 13 STEP BRICK LEDGE AND FOOTING AS REQUIRED FOR FINISH GRADE - COORDINATE WITH CIVIL PLAN

SHEET NOTES

- A. CONTRACTOR TO COORDINATE ELECTRICAL SERVICE FOR WALL MOUNTED SIGNS WITH OWNER. SIGN VENDOR TO DETERMINE EXACT MOUNTING LOCATION(S).
- B. SIGN ABOVE ENTRANCE CANOPY IS NOT K-5 AND SHOULD BE CUSTOM SIZED PER BANK SIGNAGE WEBSITE
- C. STANDARD BUILDING WALL-MOUNTED SIGNS OTHER THAN SIGN ABOVE ENTRANCE CANOPY ARE CUSTOM SIZED BASED ON ELEVATIONS PER BANK SIGNAGE WEBSITE
- D. REFER TO A12.10 FOR ENTRANCE DOOR HARDWARE WIRING DIAGRAM
- E. REFER TO 9/A09.31 FOR TYPICAL CEMENT PLASTER
- F. REFER TO DETAIL 1/A09.32 FOR TYP. WINDOW FLASHING DETAILS

Seal/Signature

Project Name
Rochester Hills Bank of America

Prototype Layout
Medium - Side Drive-Up

NELSON Project Number
12.00043.00

Description
EXTERIOR ELEVATIONS

Scale

A09.11a

Bank of America Rochester Hills New Store

NW Corner of
Adams Rd. & Marketplace Circle
Rochester Hills, MI 48309

SERIAL NUMBER: MWC0190
NRSP VERSION: 2.0
BULLETIN: 38 / DD-34

Architect



Nelco Architecture Corp.
a licensed affiliate

1201 Marquette Avenue South - Suite 200
Minneapolis, MN 55403
Phone: (612) 822-1211
Fax: (612) 822-1006

Issue	Date & Issue Description	By	Check
02/27/12	PLANNING SUBMITTAL	JWW	
05/05/12	DD REVIEW SET	JWW	
08/20/12	80% REVIEW SET	JWW	
09/17/12	ISSUE FOR PERMIT	JWW	

Seal/Signature

Project Name
Rochester Hills Bank of America

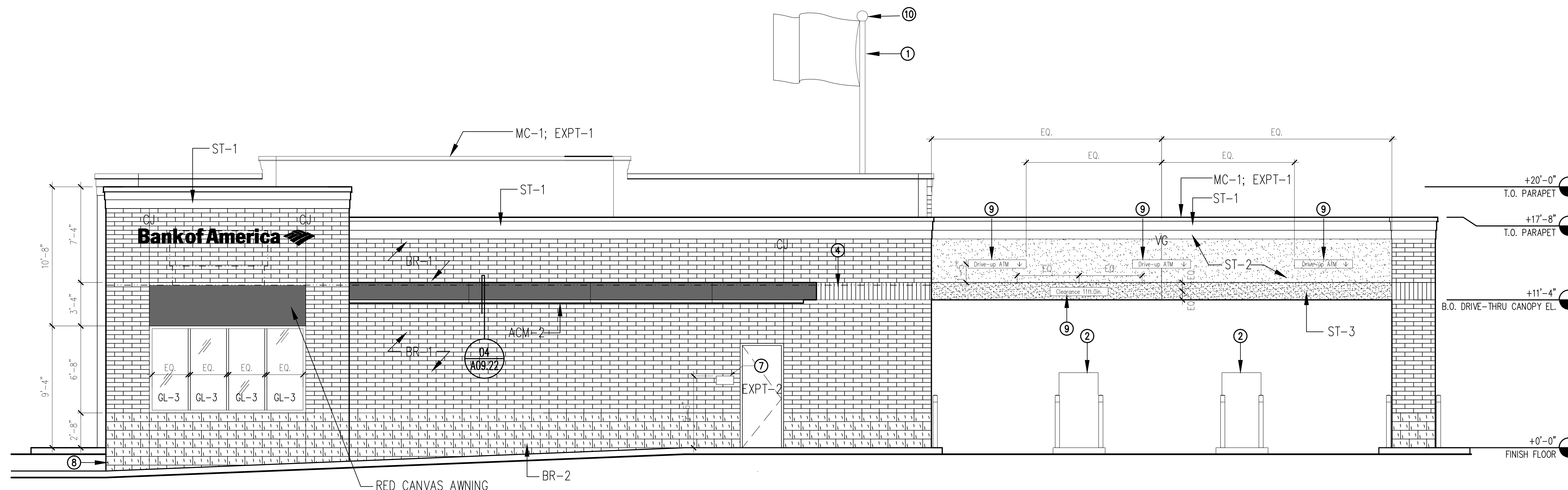
Prototype Layout
Medium - Side Drive-Up

NELSON Project Number
12.00043.00

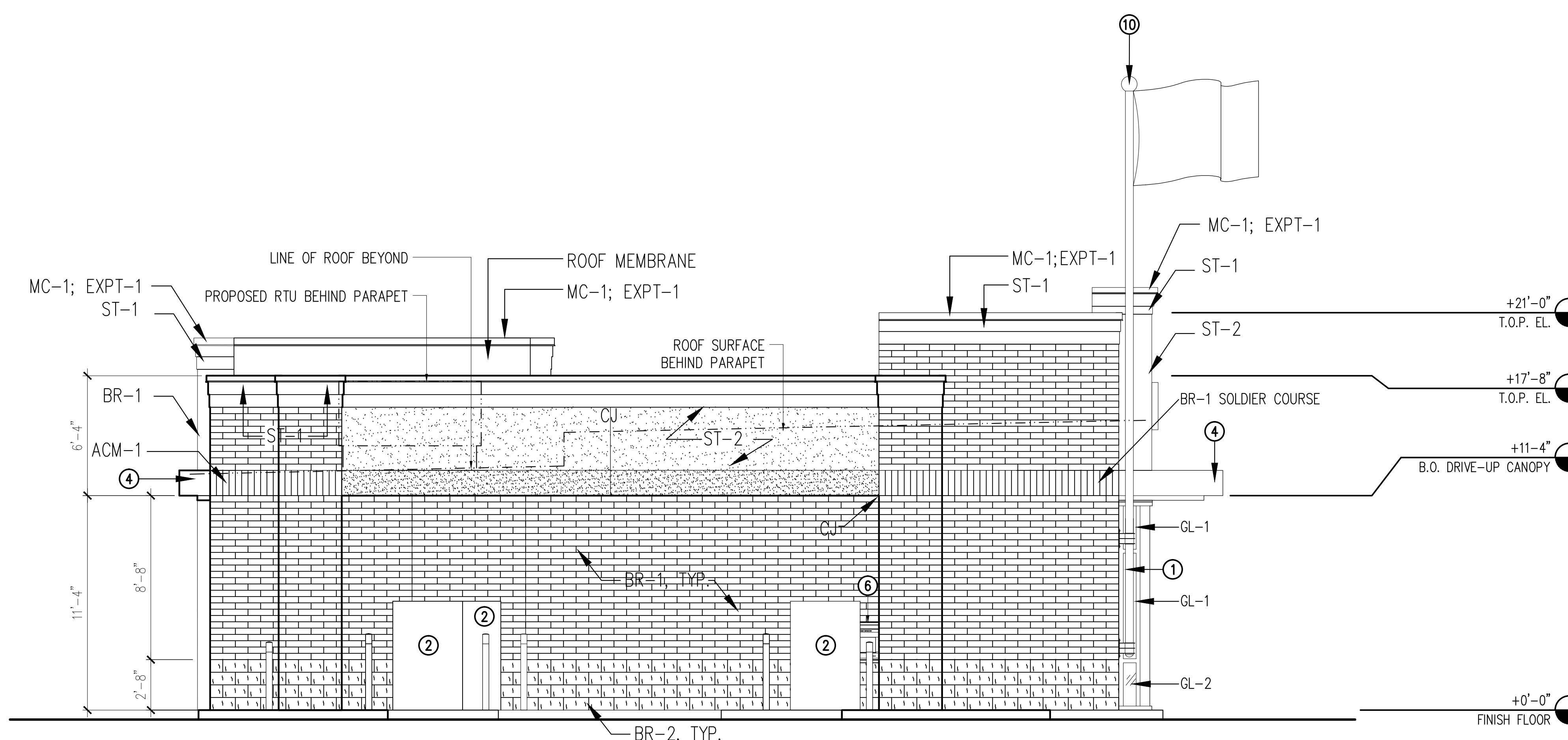
Description
EXTERIOR ELEVATIONS

Scale

A09.11b



01 REAR ELEVATION
1/4" = 1'-0"



02 SIDE ELEVATION
1/4" = 1'-0"

KEYNOTES

- 1 31-FT FLAG POLE AND MOUNTING BRACKETS - PROVIDED BY CONTRACTOR (FLAG FURNISHED BY OWNER, INSTALLED BY CONTRACTOR)
- 2 DRIVE THROUGH ATM
- 3 VACUUM AIR TUBE (VAT)
- 4 METAL PANEL SYSTEM
- 5 DRIVE THRU TELLER WINDOW
- 6 NIGHT DEPOSITORY
- 7 WALL MOUNTED SIGNAGE THAT READS "NO SMOKING WITHIN 25 FEET OF THE ENTRANCE" PROVIDED BY OWNER.
- 8 STEP BRICK LEDGE AND FOOTING AS REQUIRED FOR FINISH GRADE - COORDINATE WITH CIVIL PLAN
- 9 S3 MONIGLE SIGNAGE PROVIDED BY OWNER. CENTERLINE OF SIGN = CENTERLINE OF LANE.
- 10 LIGHT FIXTURE MOUNTED ON TOP OF FLAG POLE. SEE ELECT. DWG. FOR FIXTURE TYPE.

SHEET NOTES

- A. CONTRACTOR TO COORDINATE ELECTRICAL SERVICE FOR WALL MOUNTED SIGNS WITH OWNER. SIGN VENDOR TO DETERMINE EXACT MOUNTING LOCATION(S).
- B. SIGN ABOVE ENTRANCE CANOPY IS NOT K-5 AND SHOULD BE CUSTOM SIZED PER BANK SIGNAGE WEBSITE
- C. STANDARD BUILDING WALL-MOUNTED SIGNS OTHER THAN SIGN ABOVE ENTRANCE CANOPY ARE CUSTOM SIZED BASED ON ELEVATIONS PER BANK SIGNAGE WEBSITE
- D. REFER TO A12.10 FOR ENTRANCE DOOR HARDWARE WIRING DIAGRAM
- E. REFER TO 9/A09.31 FOR TYPICAL CEMENT PLASTER
- F. REFER TO DETAIL 1/A09.32 FOR TYP. WINDOW FLASHING DETAILS