

PRIYA LIVING - ROCHESTER HILLS

Submission to Historic District Commission: #21-001

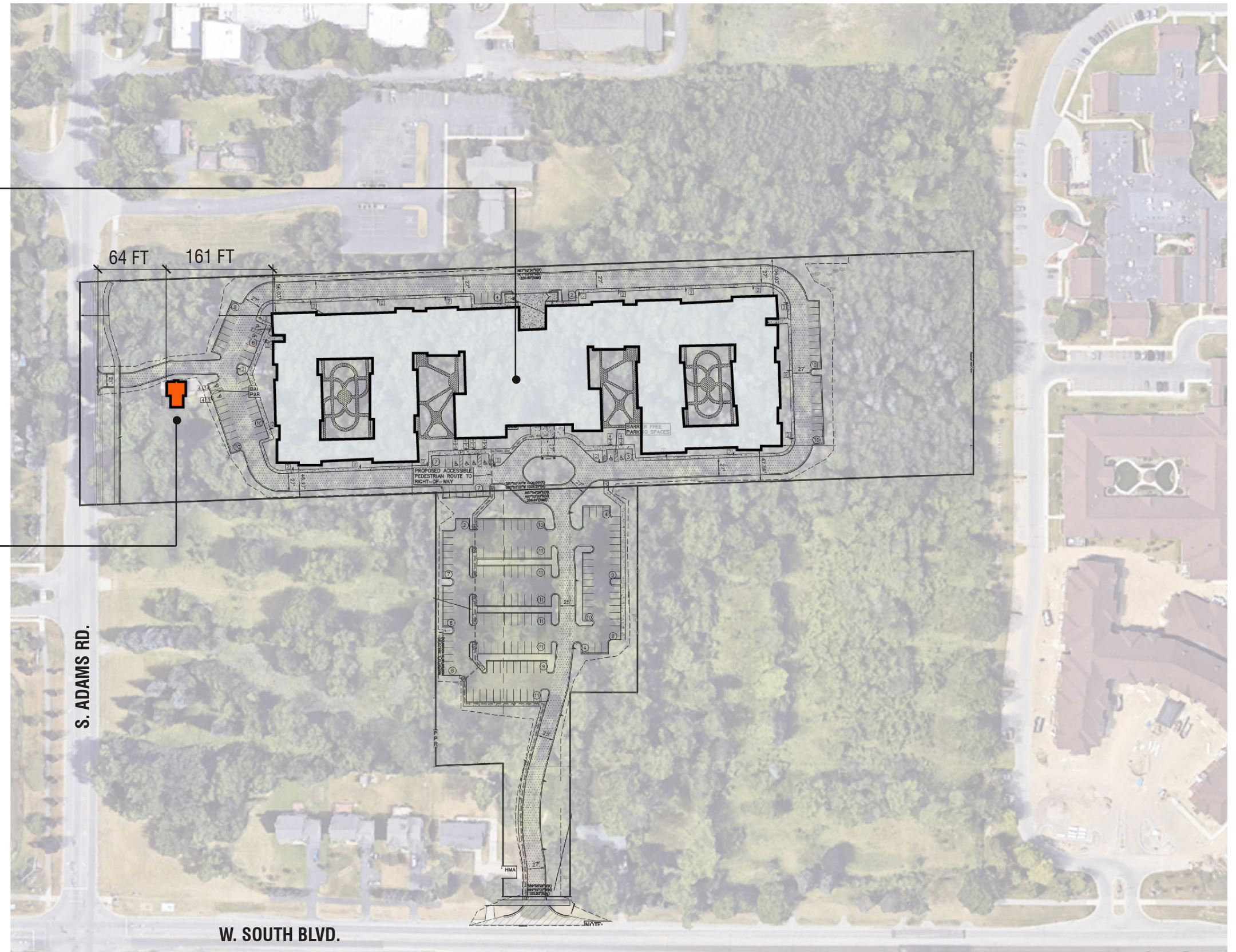
(NEW) INDEPENDENT LIVING BUILDING

Proposed 2-story senior living community with central amenities building flanked by residential wings to the East and West. The site is equipped with a ring road that provides primary access to W. South Blvd and emergency access only to S. Adams Rd. to the West.

(EXISTING) LORNA STONE HOUSE

BACKGROUND: Records show the house was originally constructed in two phases. The original construction built in 1824 consisted of a wood framed, two room structure. A second phase was added in 1840 that consisted of a partial 2-story on the north end built as a traditional stone Upright-and-Wing in the Greek Revival style. Further additions were made in 1950 and 1990 that consisted of a screen porch and second story added to the south end of the building.

HISTORICAL SIGNIFICANCE: It is assumed there is no historical significance to any construction post the 1840 phase. Priya Living is committed to supporting additional research and documentation efforts of the Lorna Stone House



SITE PLAN

N.T.S



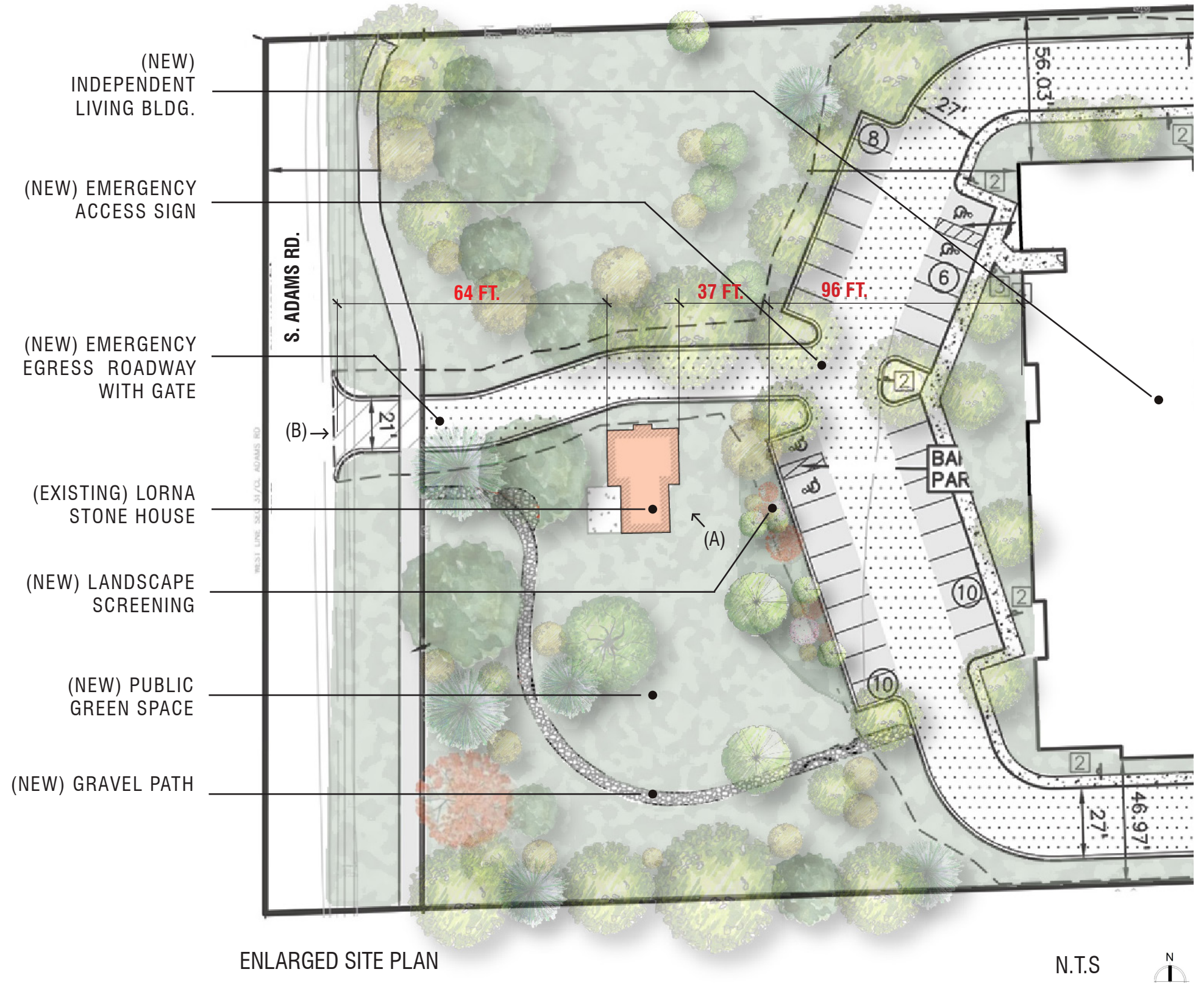
PRIYA LIVING - ROCHESTER HILLS
 Submission to Historic District Commission: #21-001



(A) LORNA STONE HOUSE - EXISTING VIEW FROM SE



(B) LORNA STONE HOUSE - EXISTING VIEW FROM S. ADAMS RD.



LORNA STONE HOUSE
CONSTRUCTION PLAN

- ① IMPROVE SITE AND LANDSCAPE
- ② STABILIZE STRUCTURE
- ③ REPLACE WINDOWS, TUCK-POINT MASONRY AS NEEDED
- ④ SCREEN FROM NEW CONSTRUCTION
- ⑤ IMPROVE ACCESS AND PRESENCE OFF ADAMS
- ⑥ ADD HISTORICAL MARKER
- ⑦ DEVELOP AREA DIRECTLY ADJACENT TO BUILDING AS PUBLIC GREEN SPACE WITH DAYTIME ACCESS



RENDERED VIEW - S. ADAMS RD

PRIYA LIVING - ROCHESTER HILLS

Submission to Historic District Commission: #21-001

LORNA STONE HOUSE CONSTRUCTION PLAN

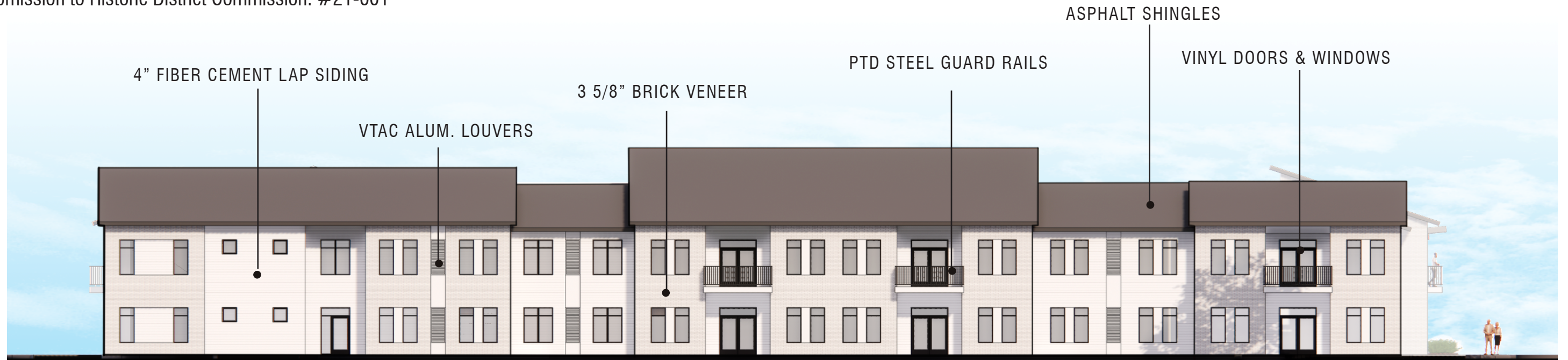
- ① IMPROVE SITE AND LANDSCAPE
- ② STABILIZE STRUCTURE
- ③ REPLACE WINDOWS, TUCK-POINT MASONRY AS NEEDED
- ④ SCREEN FROM NEW CONSTRUCTION
- ⑤ IMPROVE ACCESS AND PRESENCE OFF ADAMS
- ⑥ ADD HISTORICAL MARKER
- ⑦ DEVELOP AREA DIRECTLY ADJACENT TO BUILDING AS PUBLIC GREEN SPACE WITH DAYTIME ACCESS



RENDERED VIEW - S. ADAMS RD

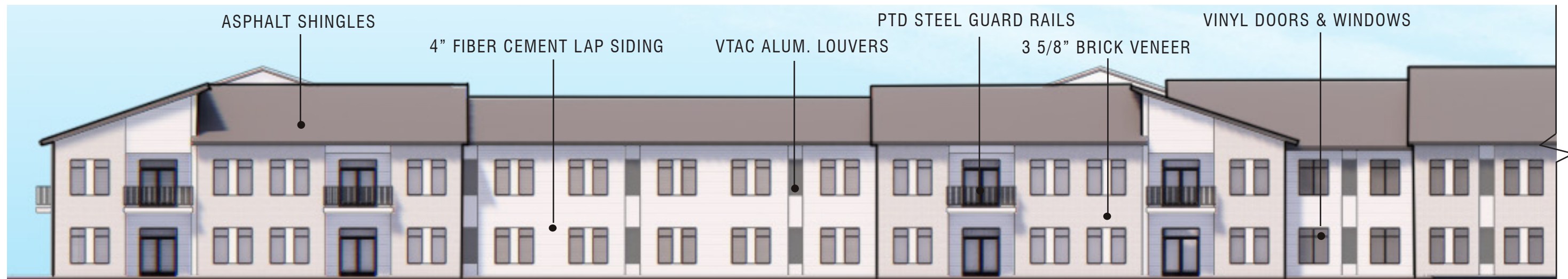
PRIYA LIVING - ROCHESTER HILLS

Submission to Historic District Commission: #21-001



PROPOSED WEST [EAST OPPOSITE HAND] ELEVATION - NEW INDEPENDENT LIVING BLDG.

N.T.S



PROPOSED NORTH ELEVATION (PARTIAL) - NEW INDEPENDENT LIVING BLDG.

N.T.S



PROPOSED NORTH ELEVATION - NEW INDEPENDENT LIVING BLDG.

N.T.S

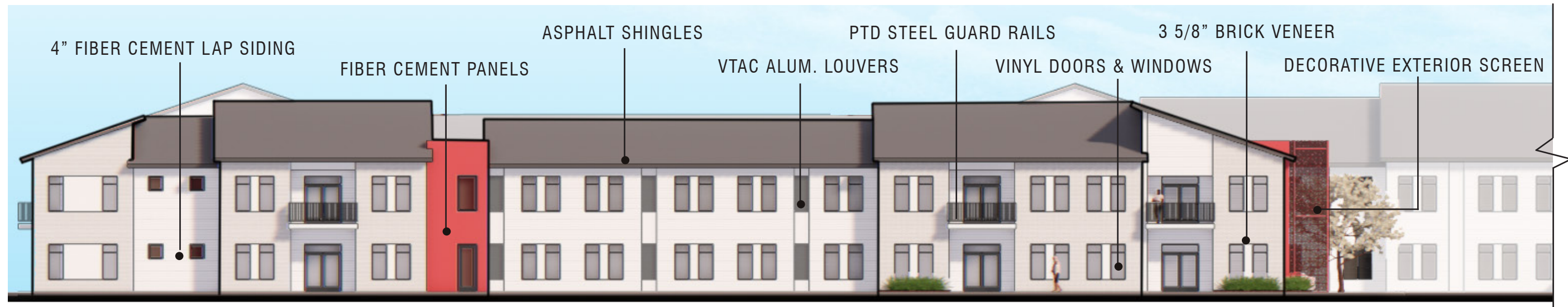
PRIYA LIVING - ROCHESTER HILLS

Submission to Historic District Commission: #21-001



PROPOSED SOUTH ELEVATION (PARTIAL) - NEW INDEPENDENT LIVING BLDG.

N.T.S



PROPOSED SOUTH ELEVATION (PARTIAL) - NEW INDEPENDENT LIVING BLDG.

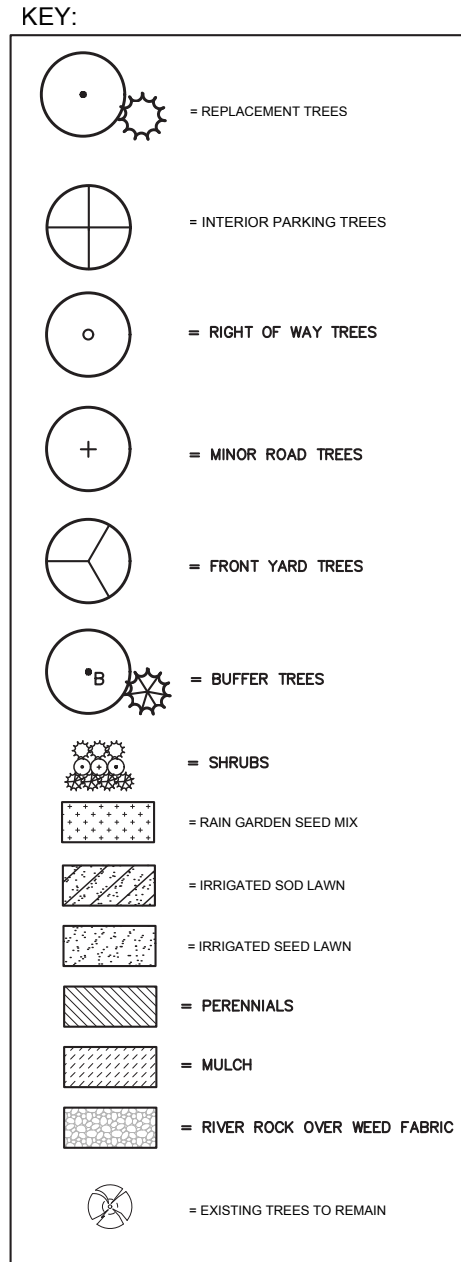
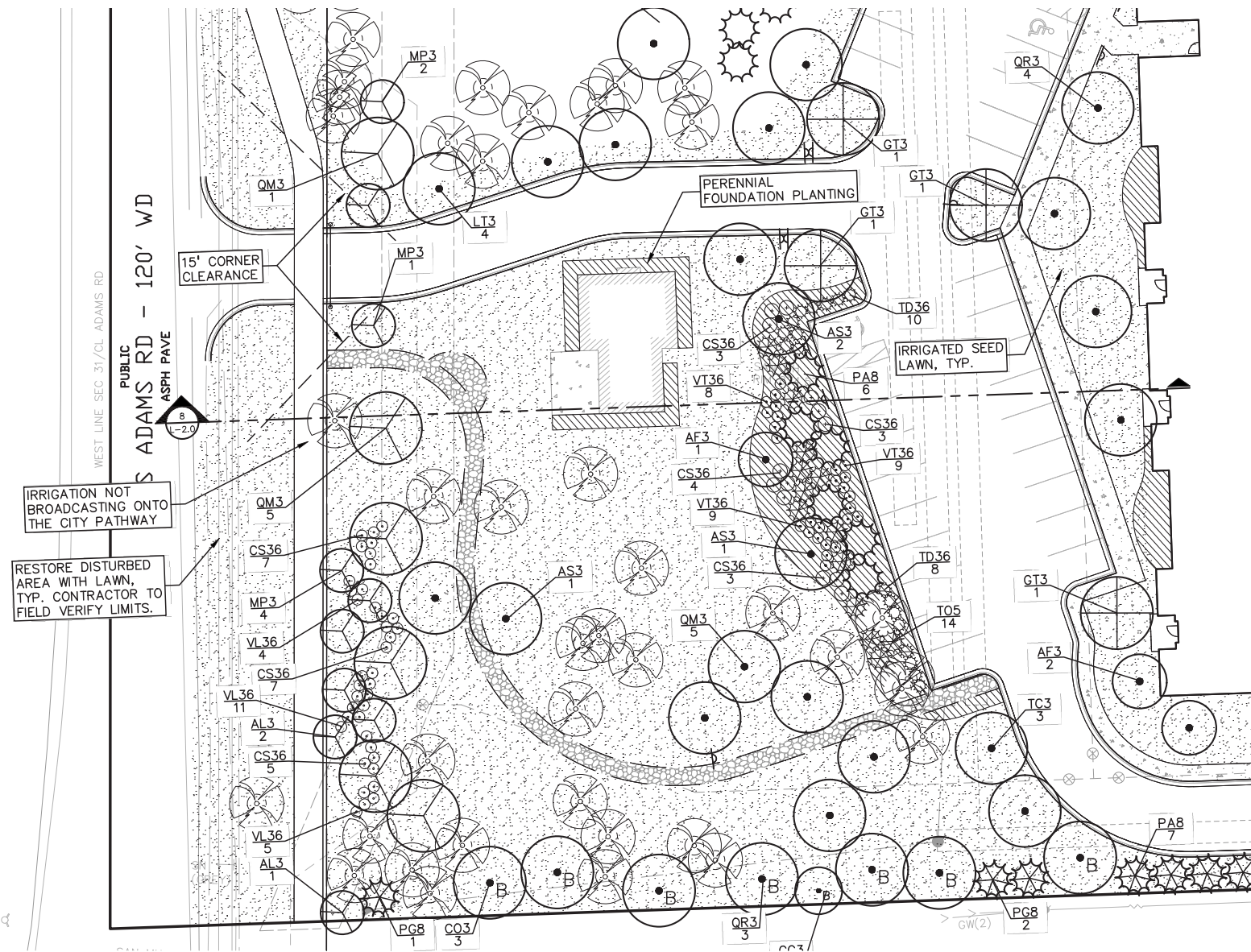
N.T.S



PROPOSED SOUTH ELEVATION - NEW INDEPENDENT LIVING BLDG.

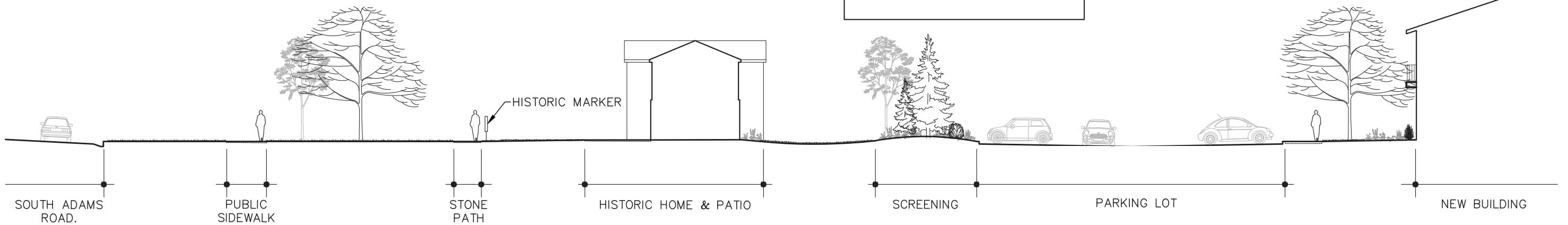
N.T.S

PRIYA LIVING - ROCHESTER HILLS
 Submission to Historic District Commission: #21-001



PROPOSED TREE PLAN - S. ADAMS RD AND LORNA STONE HOUSE*
 N.T.S

* see submitted civil set for complete documentation



8: PROPOSED CIVIL SET SECTION

N.T.S