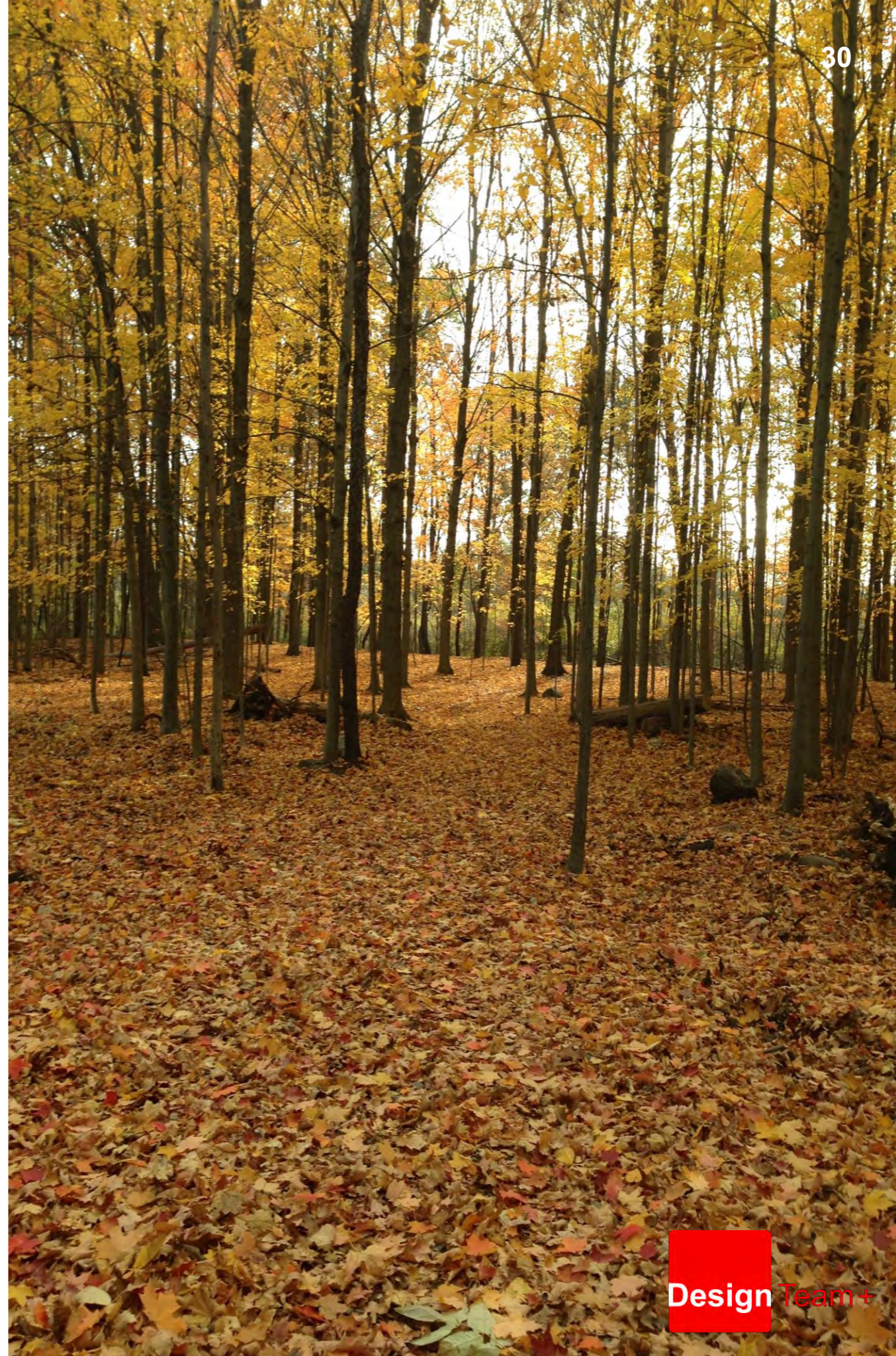
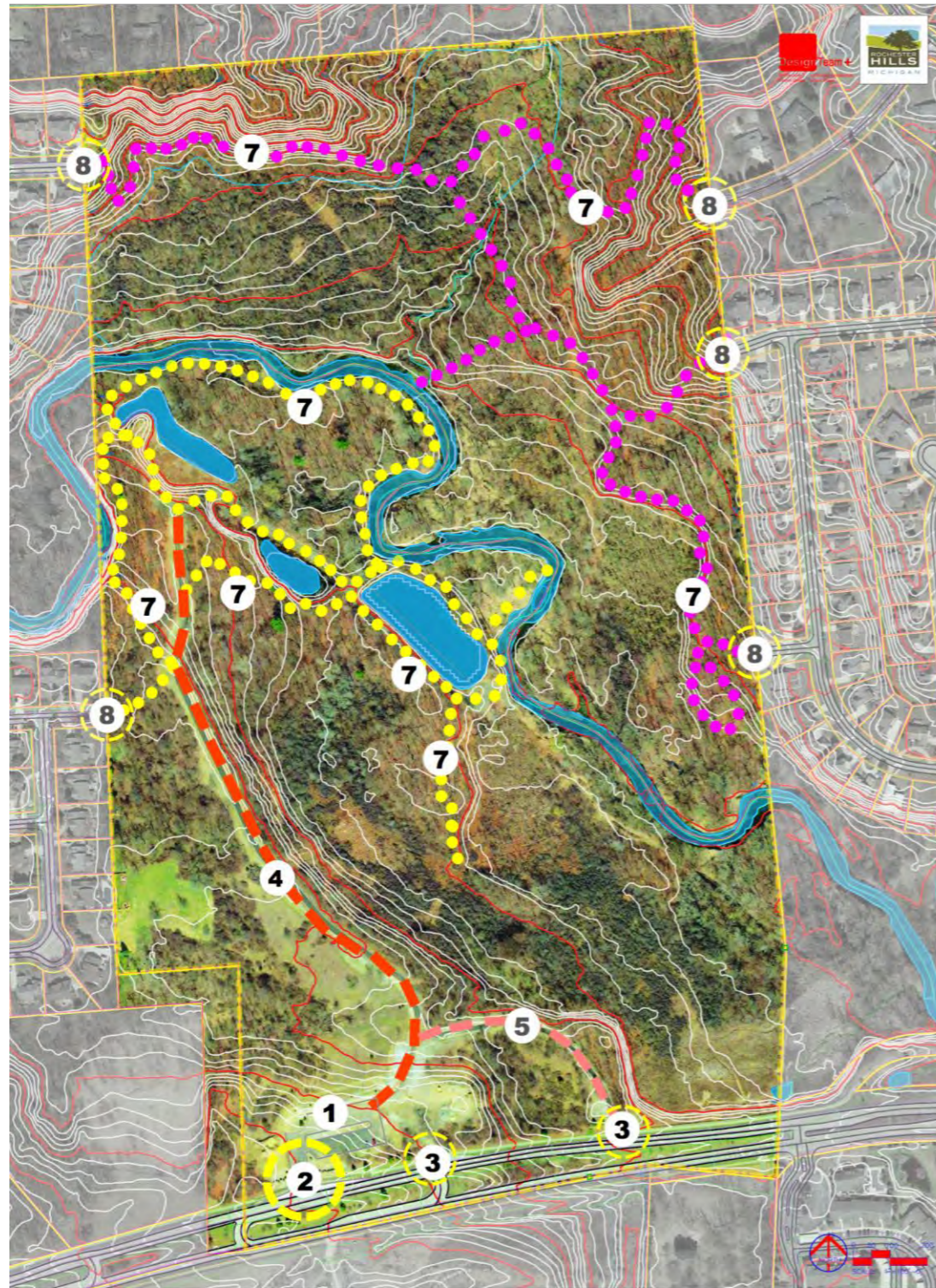


FRAMEWORK PLAN PARK ELEMENTS



EXISTING CONDITIONS: RIVERBEND PARK



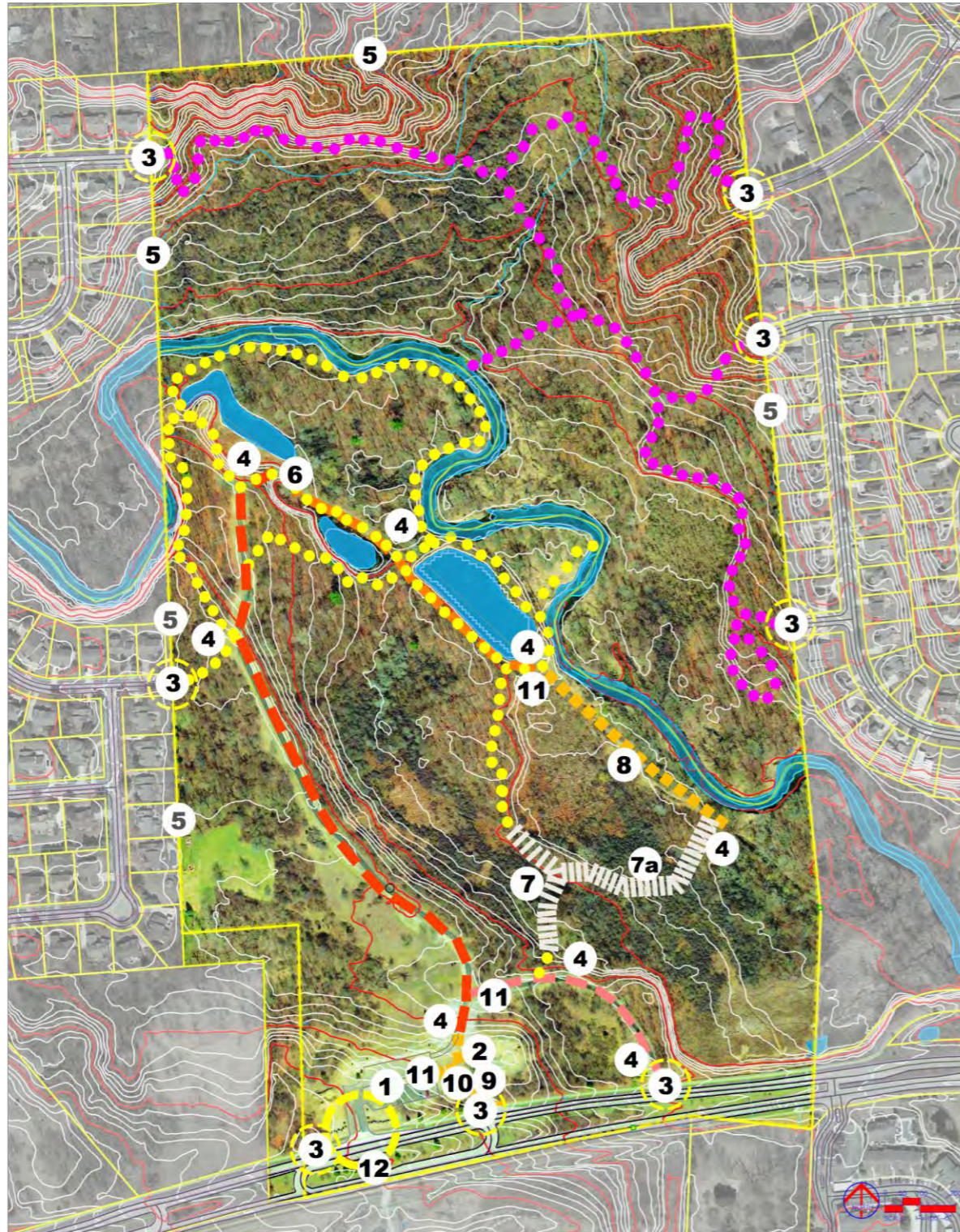
RIVERBEND PARK EXISTING

- 1. Parking Lot
- 2. Park Entry
- 3. Secondary Entrance
- 4. Paved 12' Trail
- 5. Paved 10' Trail
- 6. Gravel 8' Trail
- 7. Deer Trails
- 8. Northern Parcel Entrances



PARK ELEMENTS 1

RIVERBEND PARK



RIVERBEND PARK

PARK ELEMENTS 1 | IDEAS & CONCEPTS

1. Finish Parking Lot & Bio-Swale
2. Add Primary Signage with Map
3. Add Secondary Signage with Park Rules
4. Add Wayfinding Elements;
 - Color Coded Wayfinding Markers for Trails
 - Signage w/ Rules for Hike & Bike Trails
5. Add PVC Boundary Markers with Rules
6. 8' Trail: Remain as existing Gravel Trail or Pave 8' Trail
7. Complete Boardwalk Trail from Upper Woodlands to 10' Trail Grade for ADA Accessibility to 10' Trail
- 7a. Extend Boardwalk to Utility Easement
8. Extend Gravel Hike & Bike Trail from 8' Path through Sanitary Easement to Boardwalk (Clinton Trail Standard)
9. Complete Pedestrian / Bicycle Secondary Entrance / Trail Remove Concrete Driveway, replace curb
10. Create "Control Port" Roundabout. Connecting Secondary Entrance w/ Parking Lot , Play Area, and Main Trail Spine
11. Bike Racks
12. Sculpture(s) on Hamlin Road

Additional Programming

- Extend Utilities into Park
- Begin Removal of Invasive Species in Ponds and Wetlands
- Clear Park Waste and Yard Waste from Adjacent Homes
- Restrooms
- Add Seating Elements
- Add Waste Receptacles and Pet Waste Stations
- Trail Stabilization as Needed

RIVERBEND PARK

STRATEGIC FRAMEWORK PLAN

