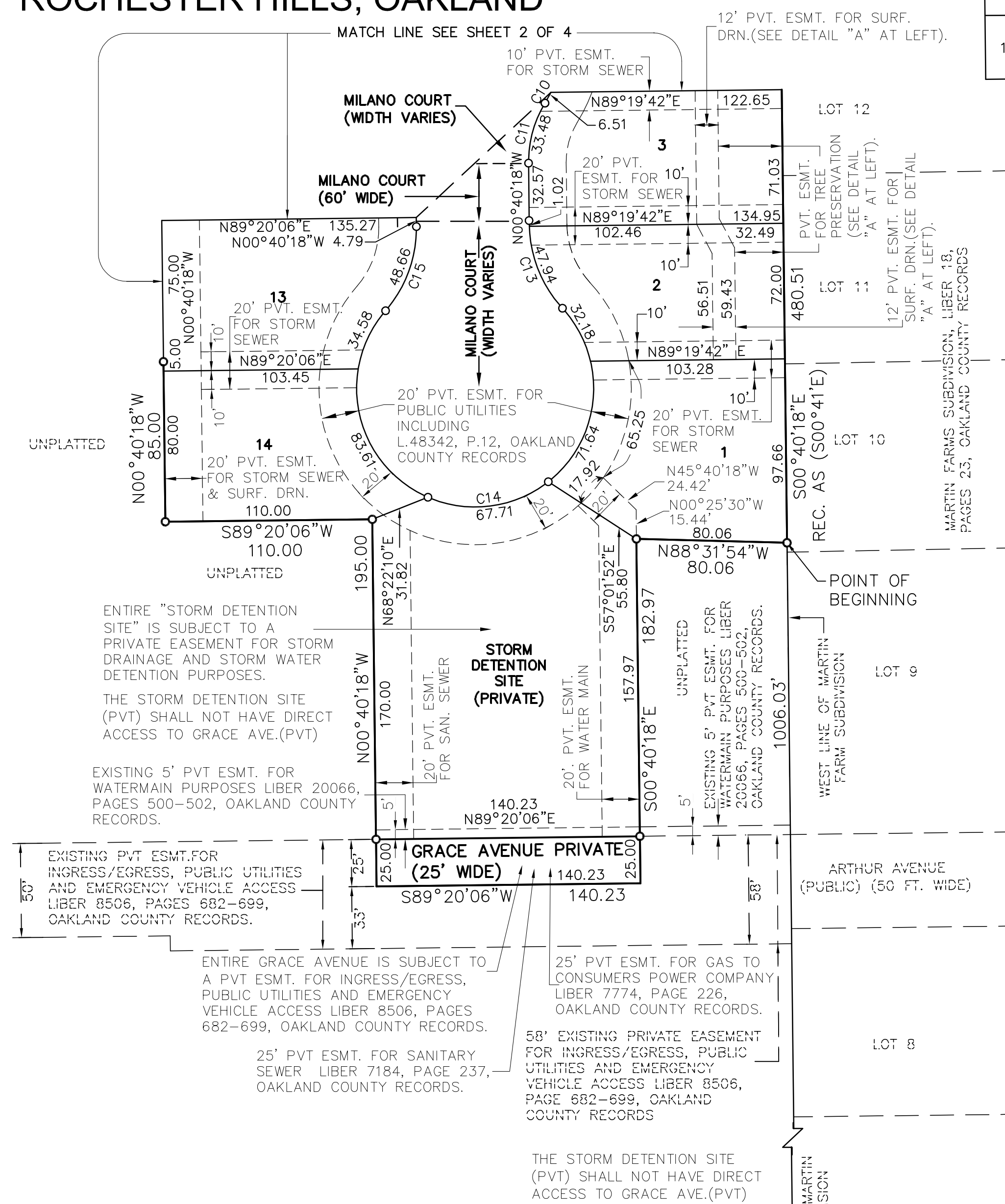
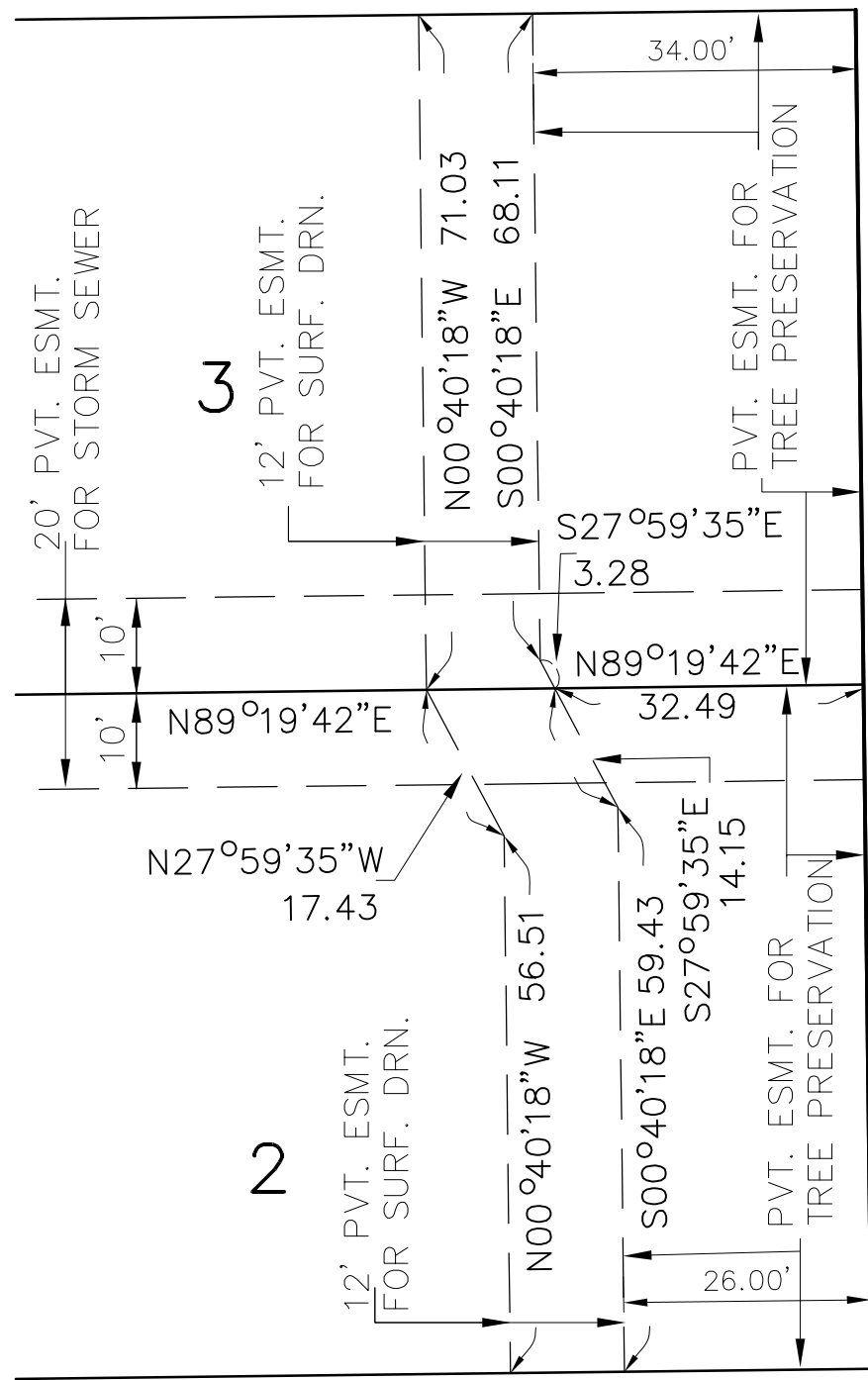
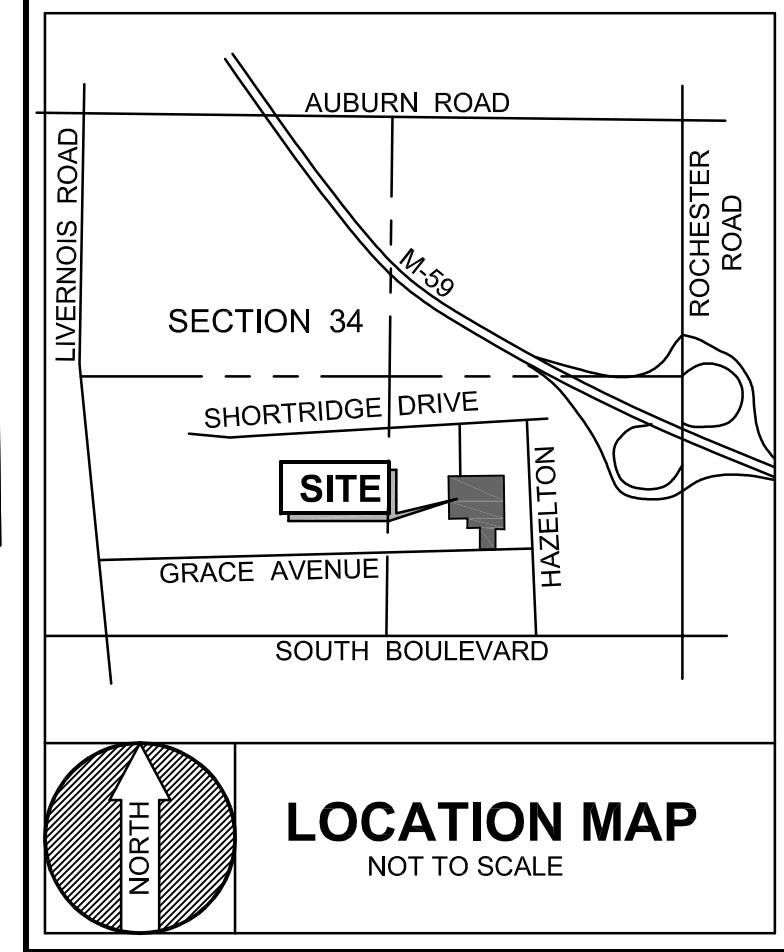
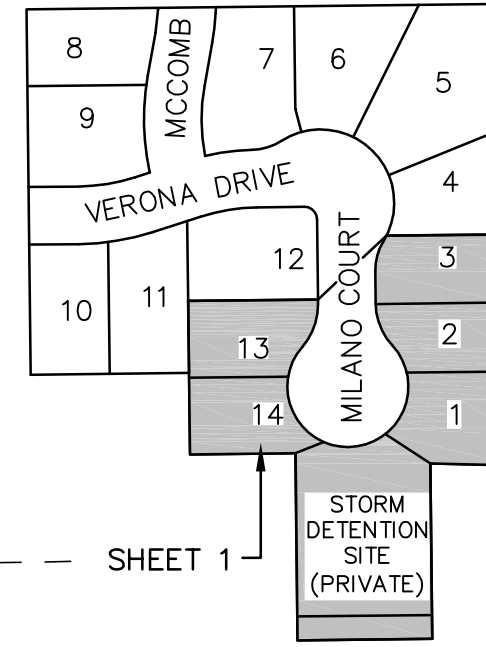
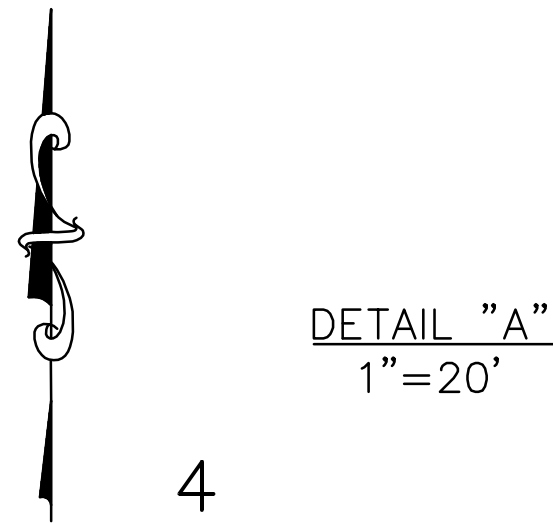


GRACE PARC SUBDIVISION

PART OF THE SOUTHEAST 1/4 OF SECTION 34, TOWN 3 NORTH,
RANGE 11 EAST, CITY OF ROCHESTER HILLS, OAKLAND
COUNTY, MICHIGAN

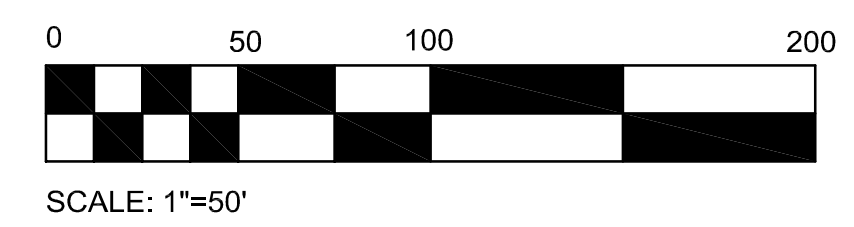


SHEET INDEX KEY
NOT TO SCALE

PLAT LEGEND:

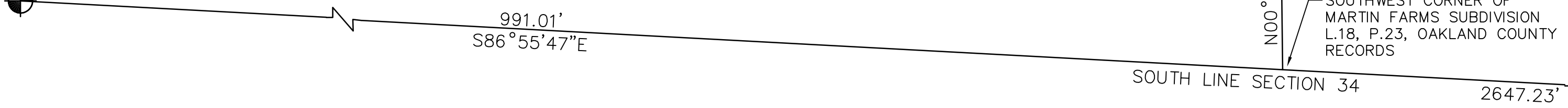
- ALL DIMENSIONS ARE GIVEN IN FEET.
- ALL CURVILINEAR DIMENSIONS ARE SHOWN ALONG THE ARC.
- THE SYMBOL "O" REPRESENTS THE LOCATION OF SET CONCRETE MONUMENTS.
- THE SYMBOL "●" REPRESENTS THE LOCATION OF A FOUND CONCRETE MONUMENT, 4" DIAMETER WITH 1/2" DIAMETER STEEL BAR IN CENTER.
- ALL SET MONUMENTS ARE 1/2" DIAMETER STEEL BARS, 36" LONG ENCASED IN 4" DIAMETER CONCRETE CYLINDERS 36" LONG.
- LOT MARKERS ARE 1/2" DIAMETER STEEL BARS AND ARE 18" LONG.
- ALL BEARINGS ARE IN RELATION TO THE RECORD BEARING OF THE SOUTH LINE OF SECTION 34 AS SHOWN ON THE PLAT OF "GUNTAR'S RUN SUBDIVISION" AS RECORDED IN LIBER 257 OF PLATS ON PAGES 33 AND 34, OAKLAND COUNTY RECORDS.
- (R) = RADIAL. LINES NOT MARKED ARE NONRADIAL.

CURVE TABLE					
CURVE	LENGTH	RADIUS	CHORD DIRECTION	CHORD LENGTH	DELTA ANGLE
C10	205.25'	76.50'	N45°34'00"W	149.00'	153°43'30"
C11	33.48'	60.00'	S15°18'50"W	33.05'	31°58'19"
C13	48.96'	67.00'	S21°36'25"E	47.88'	41°52'14"
C14	289.72'	63.00'	N89°11'58"E	94.01'	263°29'16"
C15	48.66'	67.00'	N20°08'05"E	47.60'	41°36'46"



SOUTH 1/4 CORNER, (H-13)
SECTION 34, T.3N., R.11E.,
CITY OF ROCHESTER HILLS,
OAKLAND COUNTY,
MICHIGAN, L. 14992, P. 91

SOUTHEAST CORNER, (I-13)
SECTION 34, T.3N., R.11E.,
CITY OF ROCHESTER HILLS,
OAKLAND COUNTY,
MICHIGAN, L. 16769, P. 161



GRACE PARC SUBDIVISION

PART OF THE SOUTHEAST 1/4 OF SECTION 34, TOWN 3 NORTH,
RANGE 11 EAST, CITY OF ROCHESTER HILLS, OAKLAND
COUNTY, MICHIGAN

SURVEYOR'S CERTIFICATE

I, DONALD H. KING, SURVEYOR, CERTIFY:

THAT I HAVE SURVEYED, DIVIDED AND MAPPED THE LAND SHOWN ON THE PLAT, DESCRIBED AS FOLLOWS:

"GRACE PARC SUBDIVISION" PART OF THE SOUTHEAST 1/4 OF SECTION 34, TOWN 3 NORTH, RANGE 11 EAST, CITY OF ROCHESTER HILLS, OAKLAND COUNTY, MICHIGAN AND BEING MORE PARTICULARLY DESCRIBED AS FOLLOWS:

COMMENCING AT THE SOUTH 1/4 CORNER OF SAID SECTION 34; THENCE S86°55'47"E 991.01 FEET ALONG THE SOUTH LINE OF SAID SECTION 34 TO THE SOUTHWEST CORNER OF "MARTIN FARMS SUBDIVISION" AS RECORDED IN LIBER 18 OF PLATS, PAGE 23, OAKLAND COUNTY RECORDS; THENCE N00°40'18"W 1006.03 FEET ALONG THE WEST LINE OF SAID "MARTIN FARMS SUBDIVISION" TO THE POINT OF BEGINNING; THENCE N88°31'54"W 80.06 FEET; THENCE S00°40'18"E 182.97 FEET; THENCE S89°20'06"W 140.23 FEET; THENCE N00°40'18"W 195.00 FEET; THENCE S89°20'06"W 110.00 FEET; THENCE N00°40'18"W 85.00 FEET; THENCE S89°20'06"W 164.81 FEET; THENCE N00°40'18"W 380.52 FEET; THENCE N89°20'14"E 495.04 FEET, IN PART, ALONG THE SOUTH LINE OF "GUNTAR'S RUN SUBDIVISION" AS RECORDED IN LIBER 257 OF PLATS, PAGES 33 & 34, OAKLAND COUNTY RECORDS, TO A POINT ON THE WEST LINE OF SAID "MARTIN FARMS SUBDIVISION"; THENCE S00°40'18"E 480.51 FEET ALONG THE WEST LINE OF SAID "MARTIN FARMS SUBDIVISION" TO THE POINT OF BEGINNING. CONTAINING 5.6 ACRES. THERE ARE 14 LOTS CONTAINED IN THE PLAT (1 TO 14 BOTH INCLUSIVE) AND ONE PRIVATE STORM WATER DETENTION SITE.

THAT I HAVE MADE SUCH SURVEY, LAND DIVISION AND PLAT BY THE DIRECTION OF THE OWNERS OF SUCH LAND.

THAT SUCH PLAT IS A CORRECT REPRESENTATION OF ALL THE EXTERIOR BOUNDARIES OF THE LAND SURVEYED AND THE SUBDIVISION OF IT.

THAT THE REQUIRED MONUMENTS AND LOT MARKERS HAVE BEEN LOCATED IN THE GROUND OR THAT SURETY HAS BEEN DEPOSITED WITH THE MUNICIPALITY, AS REQUIRED BY THE ACT.

THAT THE ACCURACY OF THE SURVEY IS WITHIN THE LIMITS REQUIRED BY THE ACT.

THAT THE BEARINGS SHOWN ON THE PLAT ARE EXPRESSED AS REQUIRED BY THE ACT AND AS EXPLAINED IN THE LEGEND.

FAZAL KHAN & ASSOCIATES, INCORPORATED
43279 SCHOENHERR
STERLING HEIGHTS, MICHIGAN 48313

DATE: _____

DONALD H. KING
PROFESSIONAL SURVEYOR
LICENSE NO. 30085

DATE: _____

FAZLULLAH M. KHAN
PRESIDENT

PROPRIETOR'S CERTIFICATE

WE, AS PROPRIETORS CERTIFY THAT WE CAUSED THE LAND DESCRIBED IN THIS PLAT TO BE SURVEYED, DIVIDED, MAPPED, AND DEDICATED AS REPRESENTED ON THIS PLAT AND THAT MILAND COURT, VERONA DRIVE AND MCCOMB ARE FOR THE USE OF THE PUBLIC AND GRACE AVENUE IS PRIVATE AND FOR THE USE OF THE OWNERS OF THE ADJACENT PARCELS IN THE SOUTHEAST 1/4 OF SECTION 34 AS FURTHER DESCRIBED IN LIBER 8506, PAGES 682-699 OF OAKLAND COUNTY RECORDS; THAT THE PUBLIC UTILITY EASEMENTS ARE PRIVATE EASEMENTS AND THAT ALL OTHER EASEMENTS ARE FOR THE USES SHOWN ON THE PLAT, THE STORM WATER DETENTION SITE IS PRIVATE FOR STORM DRAINAGE AND STORM WATER DETENTION PURPOSES AND STORM WATER DETENTION SITE IS NOT TO BE ACCESSED FROM GRACE AVENUE.

PATRICK BISMACK, A MARRIED MAN
2742 POWDERHORN RIDGE ROAD
ROCHESTER HILLS, MI 48309-1338

GWENDOLYN M. BISMACK, HIS WIFE
2742 POWDERHORN RIDGE ROAD
ROCHESTER HILLS, MI 48309-1338

ACKNOWLEDGMENT

STATE OF MICHIGAN
COUNTY OF OAKLAND

THE FOREGOING INSTRUMENT WAS ACKNOWLEDGED BEFORE ME THIS _____ DAY OF _____ 201 ,
BY PATRICK BISMACK, A MARRIED MAN AND GWENDOLYN M. BISMACK, HIS WIFE.

_____, OAKLAND COUNTY, MICHIGAN.
NOTARY PUBLIC _____

MY COMMISSION EXPIRES:

