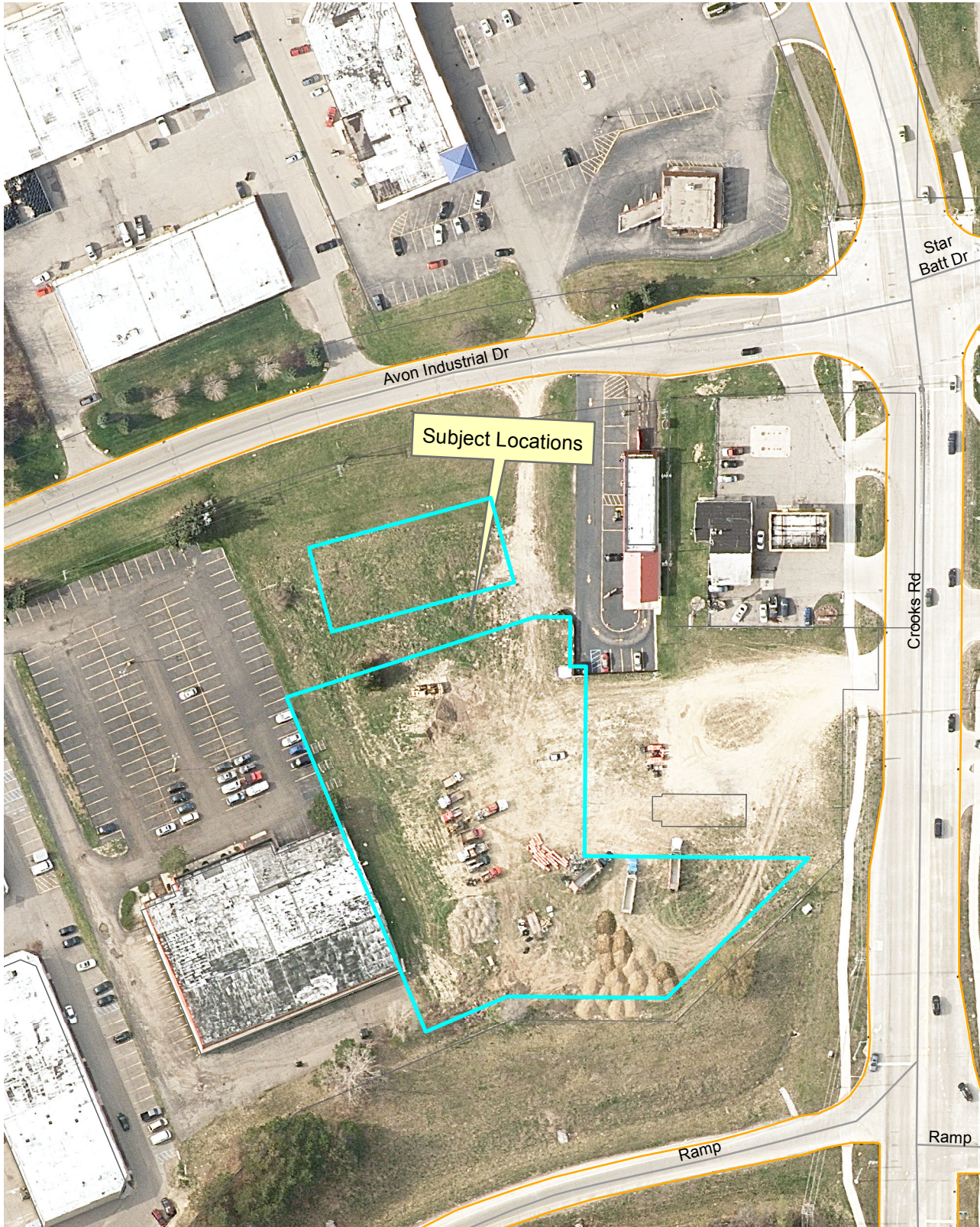


Location Map Star Batt Buildings



Subject Locations



Legend	
	TaxParcel 2014 Overlay
	Subject
	Boundary
	Other
	Other
	Other
	Other

Aerial photographs as of April 2010.
TaxParcel lines were obtained on 1/2/14 from Oakland County.
Although the information provided by this map is believed to be reliable, its accuracy is not warranted in any way. The City of Rochester Hills assumes no liability for any claims arising from the use of this map.

1/2/15

1 inch = 125 feet