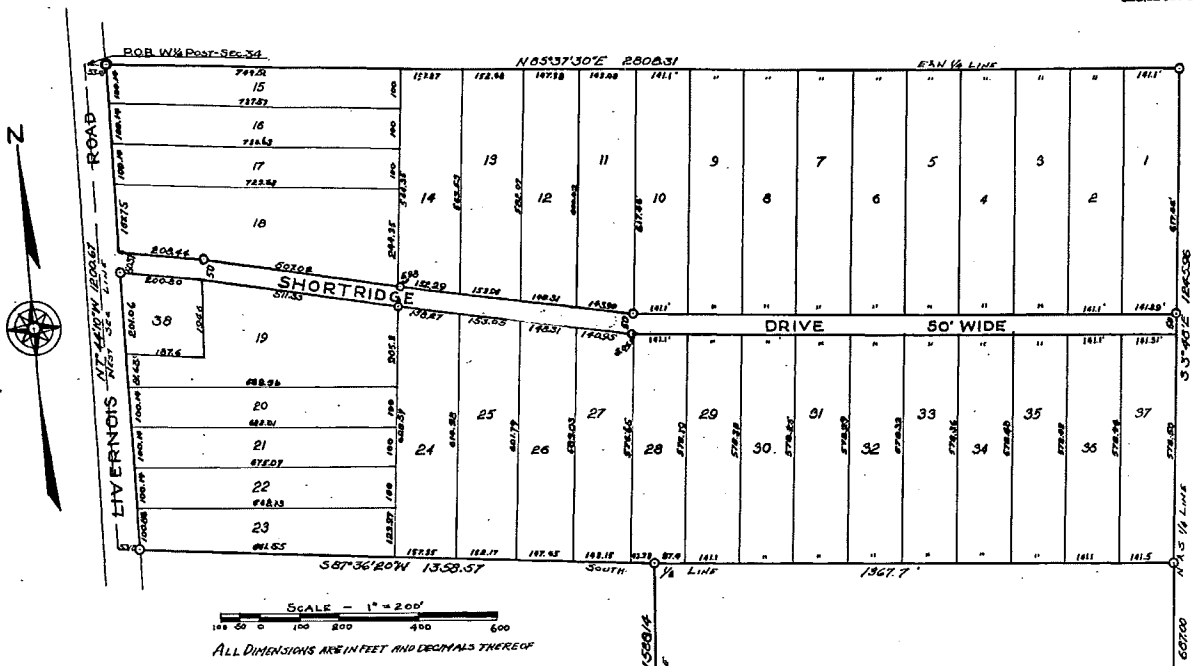


# "SUPERVISOR'S PLAT #6"

BEING PART OF THE SW 1/4 OF SEC. 34, T3N, R11E  
AVON TWP., OAKLAND CO., MICHIGAN

COPY  
Register's Office  
Oakland County, Mich.  
Plat of Supervisor's Plat #6  
Avon Township  
was Recorded this 16 day of  
October, A.D. 1939 at 5 O'clock  
P. M. in Liber 5 of Plats  
on Page 56  
*Oliver F. Gibbs*  
Supervisor of Avon



SCALE - 1" = 200'  
ALL DIMENSIONS ARE IN FEET AND DECIMALS THEREOF

### DEDICATION

KNOW ALL MEN BY THESE PRESENTS, That I, Oliver F. Gibbs  
Supervisor of Avon Township, Oakland County, State of Michigan, by  
virtue of authority in me vested by Section 51, Act 172, of 1929,  
having been duly authorized by the Township Board have caused the land  
described in the annexed plat to be surveyed, laid out and platted, to  
be known as "Supervisor's Plat #6" and that Livernolis Road as shown  
thereon is now being used for that purpose, and that Shortridge Drive  
as shown thereon is now being used for road purposes.

Witnesses: *Oliver F. Gibbs* (Seal)  
*Edwin J. ...* Supervisor of Avon Township  
*Edward R. ...*

### ACKNOWLEDGEMENT

STATE OF MICHIGAN ss  
County of Oakland

On this 10th day of September, A.D. 1939, before me,  
a Notary Public in and for said county, personally came the above  
named Supervisor of Avon Township, known to me to be the person who  
executed the above dedication, and acknowledged the same to be his  
free act and deed as such Supervisor.

Notary Public in and for Oakland County  
My commission expires April 16, 1941

APPROVED THIS 11th DAY  
OF September, A.D. 1939 BY  
*Robert C. ...*  
*John A. ...*  
Board of County Road Commissioners  
of the County of Oakland, State of Michigan

The Oakland County Road Commission hereby disclaims any  
responsibility for the construction, upkeep or maintenance of  
any nature whatsoever of Shortridge Drive as shown hereon.

Approved by the Board of County Auditors  
of Oakland County, Michigan, this 11th day of September,  
1939

*John E. ...*  
*John E. ...*

Examined and Approved  
October 16, 1939  
*Wayne Jewell Fordy*  
Wayne Jewell Fordy, Deputy Auditor General

FILED IN AUDITOR GENERAL'S DEPT.  
October 18, 1939  
*Wayne Jewell Fordy*  
Wayne Jewell Fordy, DEPUTY AUDITOR GENERAL

### DESCRIPTION

The land embraced in the annexed plat of "Supervisor's Plat #6" is  
described as follows: Commencing at the West quarter post of Section 34,  
Town 3 North, Range 11 West, Avon Township, Oakland County, Michigan;  
thence N 85° 37' 30" E 2808.31 feet; thence S 7° 48' 00" E 1245.95 feet;  
thence S 3° 47' 30" E 687.00 feet; thence S 89° 41' 40" W 1346.09 feet;  
thence N 6° 09' 25" W 586.14 feet; thence S 87° 36' 20" W 1358.57 feet;  
thence N 7° 44' 10" W 1200.67 feet; to the place of beginning.

### SURVEYORS CERTIFICATE

I hereby certify that the plat hereon delineated is a correct one  
and that permanent metal monuments of not less than one inch in diameter  
and fifteen inches in length set in a concrete base at least four inches  
in diameter and forty-eight inches in depth have been set at points  
marked thus o as shown thereon at all angles in the boundary of the land  
platted, at the intersections of streets, and at the intersections of the  
streets with the boundaries of the plat as shown on said plat.

*Earl L. Clark*  
Earl L. Clark  
Registered Professional Engineer  
Registered Surveyor

### CERTIFICATE OF MUNICIPAL APPROVAL

This plat was approved by the Township Board of Avon Township at  
a meeting held September 20th 1939

*Frances O. ...*  
Frances O. ... Clerk

I HEREBY CERTIFY THAT THIS COPY IS  
A TRUE COPY OF THE MAP OR PLAT  
FORWARDED THE REGISTER OF DEEDS  
FOR RECORDING.

COMPARED October 19, 1939  
*Wayne Jewell Fordy*  
Wayne Jewell Fordy, DEPUTY AUDITOR GENERAL