

City of Rochester Hills

OAKLAND COUNTY, MICHIGAN

Construction plans for 2014 Asphalt Road Rehabilitation Program Local Streets Part A (Grosse Pines & Vintage Estates Subdivisions) Part B (Cross Creek Subdivision Speed Humps) City File E14-002



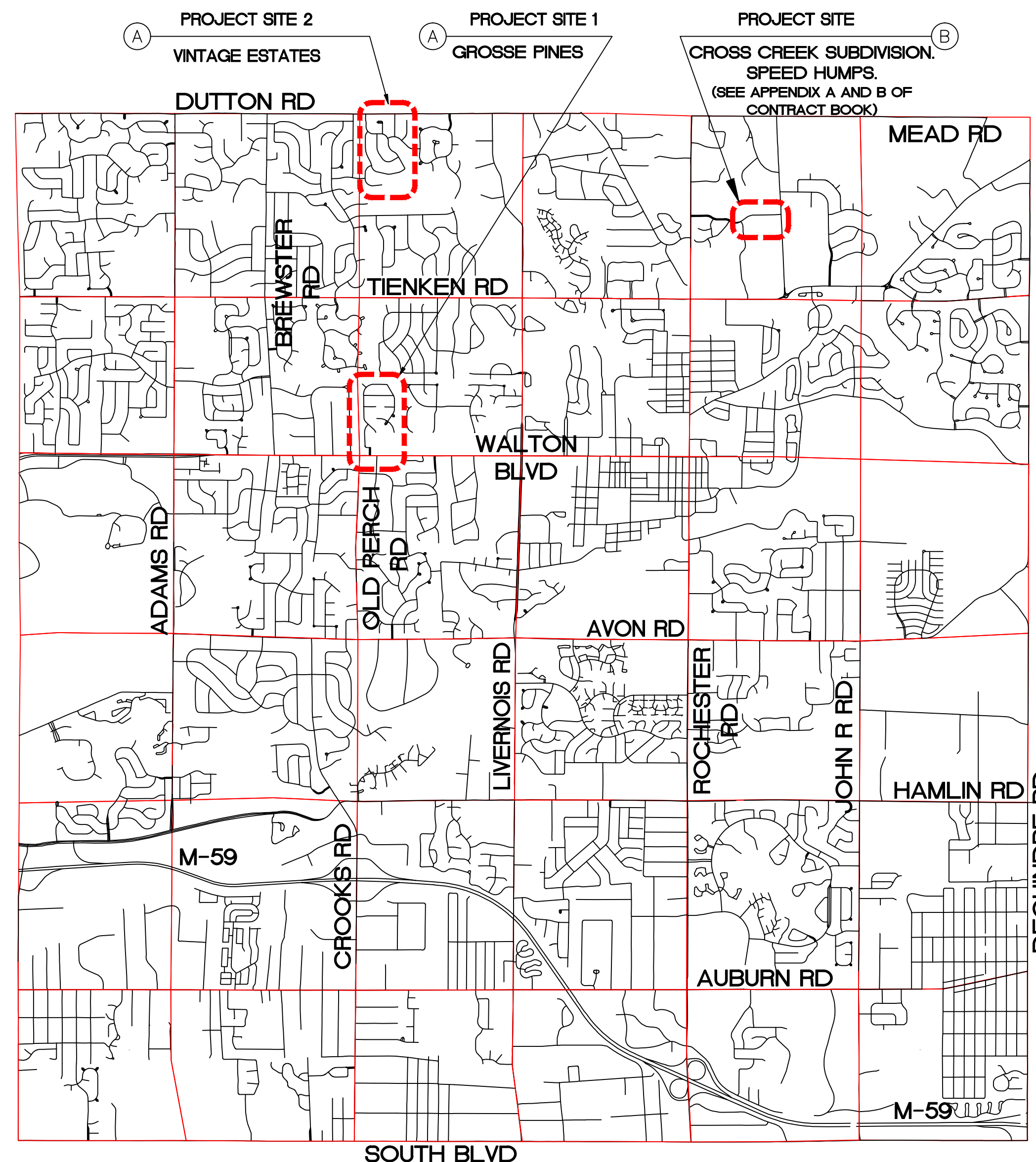
2014 ASPHALT ROAD REHABILITATION PROGRAM TOTAL QUANTITIES CITY FILE #E14-002

Part A - Local Streets (Grosse Pines & Vintage Estates Subdivisions)

Item No.	Description	Quantity	Unit
1	Cold Milling HMA Surface	51,500	Square Yard
2	Conc Curb & Gutter, Rem	3,725	Foot
3	Utility Structure, Adjust w/ EJ Riser Rings	6	Each
4	Utility Structure, Reconstruct	6	Foot
5	Utility Structure, Recondition	6	Each
6	Curb and Gutter, Conc, Mountable	3,725	Foot
7	Conc Sidewalk Curb, Integral w/ walk, 6 inch width (max 8 inch hei	50	Foot
8	Pavt Joint and Crack Repr, Detail 7	2,000	Foot
9	Hand Patching	150	Ton
10	HMA, 5E3	6,300	Ton
11	HMA, 4E3 (Modified)	560	Ton
12	HMA Pathway, Rem	1,600	Square Foot
13	Shared Use Path, Aggregate	50	Ton
14	Sidewalk Ramp, Conc, 6 inch	960	Square Foot
15	Sidewalk, Conc, 4 inch	640	Square Foot
16	Detectable Warning Surface	64	Square Foot
17	Topsoil Surface, 2 inch and Seeding, Mixture THM w/ Mulch	750	Square Yard
18	Erosion Control, Inlet Protection, Fabric Drop	100	Each
19	Audio & Video Coverage	1	Lump Sum
20	Traffic Maintenance & Control	1	Lump Sum
21	Mobilization, Max 5% - Items 1 thru 20	1	Lump Sum

Part B - Cross Creek Subdivision Speed Humps

Item No.	Description	Quantity	Unit
22	Speed Hump - City Detail	3	Each
23	Cold Plastic Pavt Marking, Speed Hump Chevron	6	Each
24	Traffic Maintenance & Control	1	Lump Sum
25	Mobilization, Max 5% - Items 23 thru 24	1	Each



LOCATION MAP

CITY OF ROCHESTER HILLS
OAKLAND COUNTY, MICHIGAN

Private Utility Companies Contact Information List

General Mailings or Plan Review		Utility Location Mailings	
AT&T 54 North Mill Street Pontiac, MI 48342 Attn: Steve Shore, Engineer (248) 456-9371 Cell: (810) 624-5373 ss5865@att.com		AT&T 54 North Mill Street Pontiac, MI 48342 Attn: Dean Jones, Engineer (248) 456-9371 Cell: (810) 624-5373	
Comcast 6095 Wall Street Sterling Heights, MI 48312 Attn: Tom Dickinson (586) 883-7412 tom_dickinson@cable.comcast.com		Comcast 6095 Wall Street Sterling Heights, MI 48312 Attn: Tom Dickinson (586) 883-7412 tom_dickinson@cable.comcast.com	
Consumers Energy 14500 Dixie Highway Holy, MI 48442 Attn: Michael Jablonski Project Coordinator Cell: (248) 217-2004 (248) 858-4405 mjablonski@cmsenergy.com		Consumers Energy For utility locations a 'Gas Facility Map Request Form' (located in file list) should be completed and mailed or faxed. The appropriate address and fax numbers are shown on the form.	http://www.permits/forms/Gas_Facility_Map_Request_Form.doc
Detroit Edison Macomb Service Center 14500 Dixie Highway Clinton Twp., MI 48038 Attn: Ron Cleveland Supervisor of Service Planners (586) 412-4709 FAX: (586) 412-3220 clevelandr@detenergy.com		Detroit Edison For location and mapping of lines email: http://www.dteenergy.com/Business_Customers/buildersContractors/info/MapRequest.html	
Outdoor Lighting Macomb Service Center 14500 Dixie Highway Clinton Twp., MI 48038 Attn: Joe Honce (734) 397-4188 Cell: (586) 381-0246 honcej@detenergy.com			
Detroit Edison IGS Group One Energy Plaza, 518 SB Detroit, MI 48226 Attn: Robin O'Connell Associate Facilitator oconnellr@detenergy.com			
Fiber Link, Inc. 3529 W. Genesee, Suite 6 Lapeer, MI 48446 Attn: Tina Snoblen (810) 667-2891 x 307 tsnoblen@fiberlinkinc.com		Fiber Link, Inc. 3529 W. Genesee, Suite 6 Lapeer, MI 48446 Attn: Gary Greene (810) 441-4866 Cell: (205) 331-9342 ggreene@fiberlinkinc.com	
Rochester Community Schools 501 W. University Rochester, MI 48307 Attn: John Stoner Director of Operations (248) 726-4611 jstoner@rochester.k12.mi.us			
Testing Engineers & Consultants, Inc. 1343 Rochester Road P.O. Box 249 Troy, MI 48099-0249 Attn: Bill West, P.E. (248) 588-6200 Cell: (248) 825-7442			
Wide Open West 32650 N. Avis Drive Madison Heights, MI 48071 Attn: Frank Binaghi (248) 677-9008 fbinaghi@wideopenwest.com		Wide Open West 32650 N. Avis Drive Madison Heights, MI 48071 Attn: Frank Binaghi (248) 677-9008 fbinaghi@wideopenwest.com	

City Project Manager
Paul Shumejko, P.E., PTOE - Transportation Engineer
Phone: (248) 841-2489
Email shumejkop@rochesterhills.org

Sheet Index

COVER	1	MAP, QUANTITIES, UTILITY CONTACTS
SITE #1	2	GROSSE PINES
SITE #2	3	VINTAGE ESTATES
DETAILS	4	Road & Pathway & Speed Hump Cross Sections
	5	ADA Ramp Details
	6	Traffic Control

ISSUED FOR BID : 02.19.14

REVISION # 0 DATE 02.19.14