

NO.	BY	CHK	DESCRIPTION	DATE

REVISIONS

CAUTION!! THE LOCATIONS AND ELEVATIONS OF EXISTING UNDERUTILIZED UTILITIES AS SHOWN ON THIS DRAWING ARE ONLY APPROXIMATE. NO GUARANTEE IS MADE FOR THE ACCURACY OF THESE UTILITIES. THE CONTRACTOR SHALL BE SOLELY RESPONSIBLE FOR VERIFYING THE EXACT UTILITIES LOCATIONS AND ELEVATIONS PRIOR TO THE START OF CONSTRUCTION.

CONSTRUCTION CONTRACTOR AGREES THAT IN ACCORDANCE WITH GENERALLY ACCEPTED CONSTRUCTION PRACTICES, CONSTRUCTION CONDITIONS DURING THE COURSE OF CONSTRUCTION AND COMPLETE RESPONSIBILITY FOR JOB SITE SAFETY SHALL BE THE CONTRACTOR'S RESPONSIBILITY. THE CONTRACTOR SHALL BE RESPONSIBLE FOR OBTAINING ALL NECESSARY PERMITS AND FOR THE SAFETY OF ALL PERSONS AND PROPERTY THAT THIS AGREEMENT SHALL BE MADE TO APPLY. CONTRACTORS AND NOT BE LIMITED TO NORMAL WORKING HOURS AND CONSTRUCTION CONTRACTORS SHALL BE RESPONSIBLE FOR OBTAINING ALL NECESSARY PERMITS AND FOR THE SAFETY OF ALL PERSONS AND PROPERTY THAT THIS AGREEMENT SHALL BE MADE TO APPLY. CONTRACTORS AND NOT BE LIMITED TO NORMAL WORKING HOURS AND CONSTRUCTION CONTRACTORS SHALL BE RESPONSIBLE FOR OBTAINING ALL NECESSARY PERMITS AND FOR THE SAFETY OF ALL PERSONS AND PROPERTY THAT THIS AGREEMENT SHALL BE MADE TO APPLY.

3 FULL WORKING DAYS BEFORE YOU DIG CALL 811

Know what's Below Call before you dig

Miss Dig System, Inc.
1-800-482-7171 www.missdig.net

PEA, Inc.

2430 Rochester Ct. Ste 100
Troy, MI 48063-1872
t: 248.689.9090
f: 248.689.1044
www.peainc.com

J B DONALDSON COMPANY

37610 HILLS TECH DRIVE
FARMINGTON HILLS, MI 48331

PRELIMINARY DETAIL SHEET

JENOPTIK ROCHESTER HILLS

PART OF THE SOUTH 1/4 OF SECTION 21, T8N, R12E
ROCHESTER HILLS, OAKLAND COUNTY, MICHIGAN

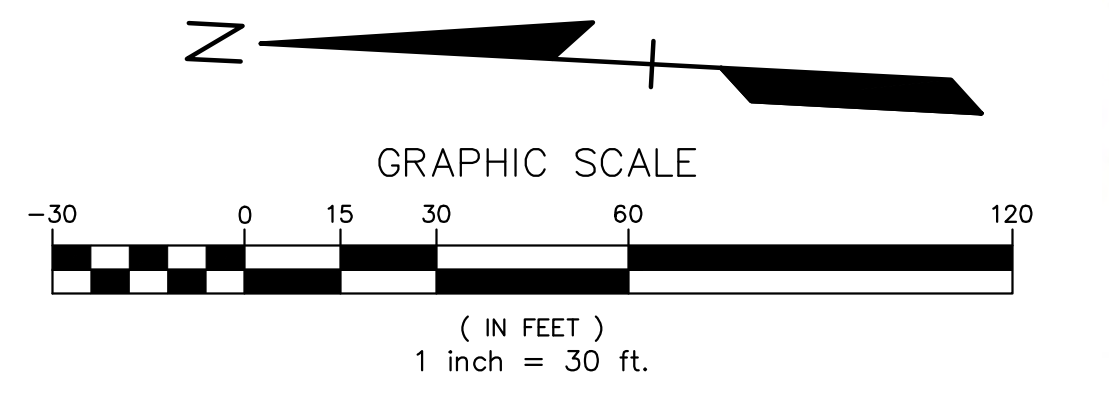
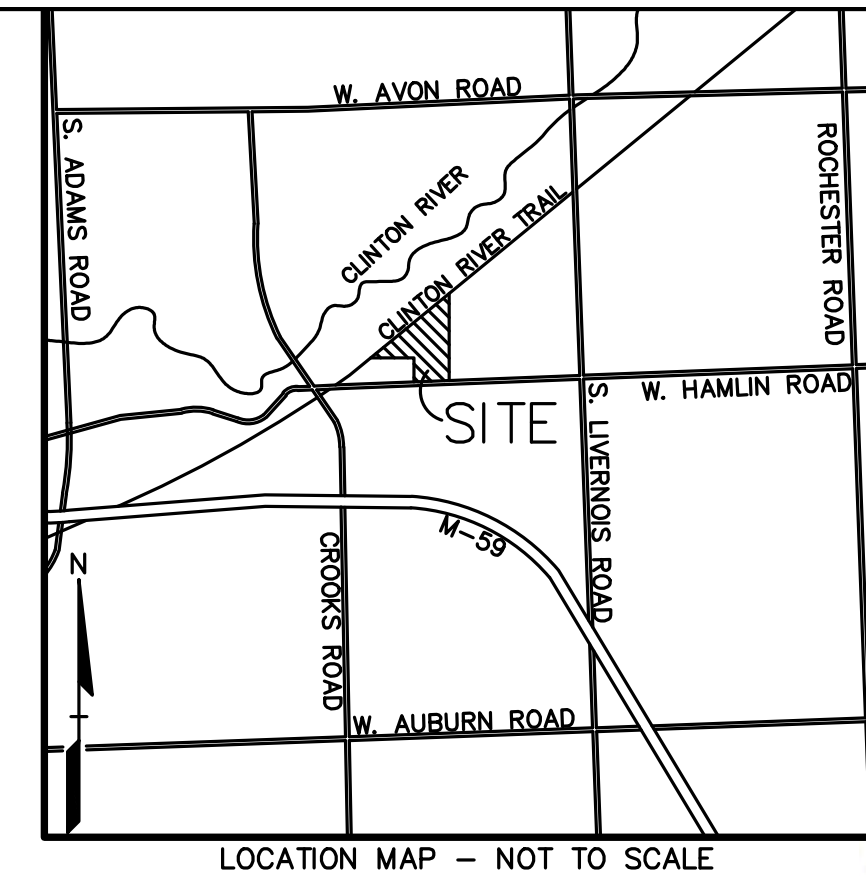
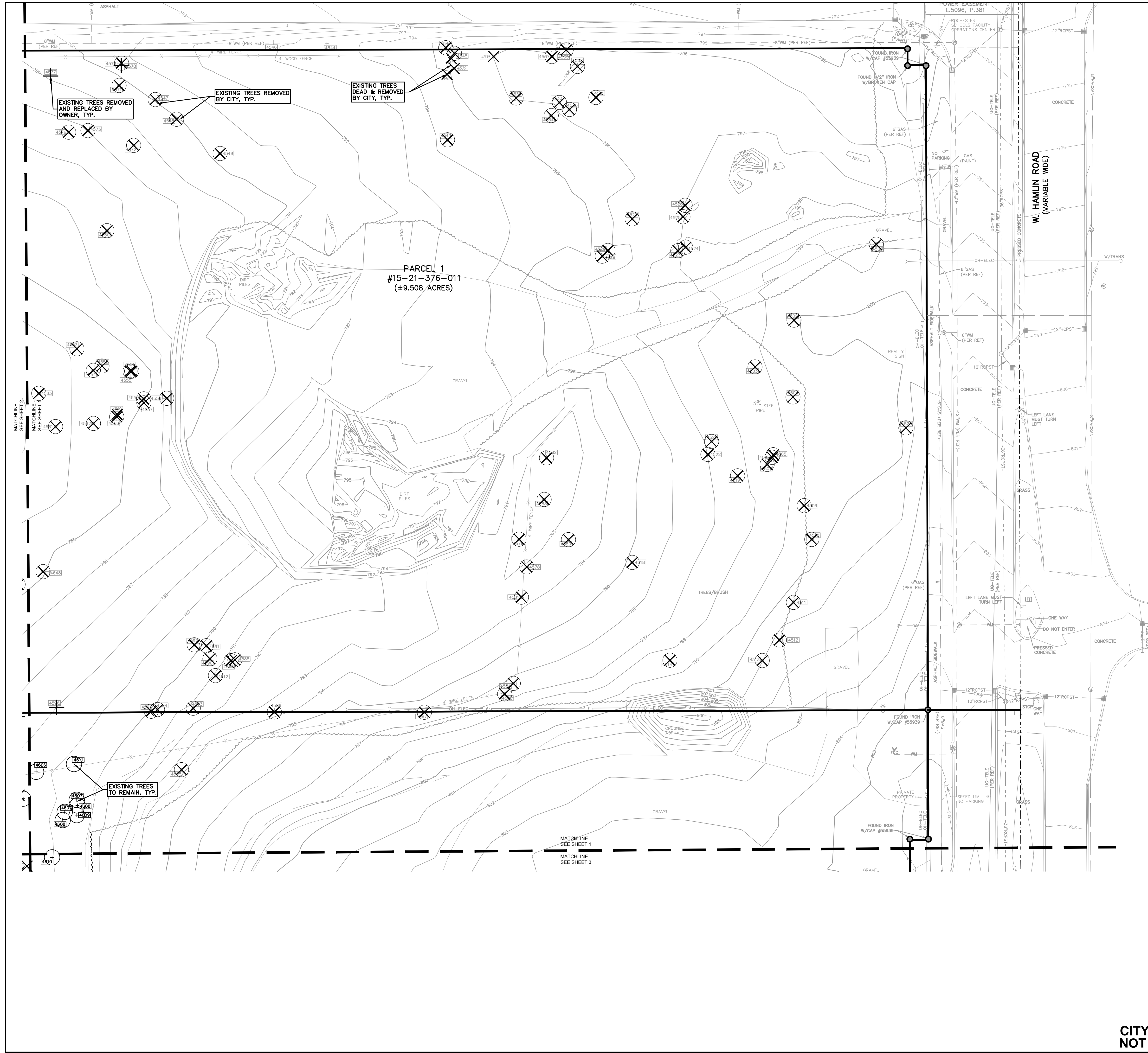
DES. RLS DN RLS SUR RLS DLT P.M. SAS

ORIGINAL ISSUE DATE:
MARCH 2, 2016

PEA JOB NO. 2016-029

SCALE: 1" = 3'

DRAWING NUMBER:
C-7.1



- KEY:**
- EXISTING TREES TO REMAIN
 - EXISTING TREES TO BE REMOVED BY OWNER
 - EXISTING TREES TO BE REMOVED BY CITY
 - EXISTING DEAD TREES TO BE REMOVED BY CITY

NO.	BY	CHK	DESCRIPTION	DATE
REVISIONS				



CAUTION!!
 THE LOCATIONS AND ELEVATIONS OF EXISTING UNDERGROUND UTILITIES AS SHOWN ON THIS DRAWING ARE ONLY APPROXIMATE. NO GUARANTEE IS EITHER EXPRESSED OR IMPLIED AS TO THE COMPLETENESS OR ACCURACY THEREOF. THE CONTRACTOR SHALL BE EXCLUSIVELY RESPONSIBLE FOR DETERMINING THE EXACT UTILITY LOCATIONS AND ELEVATIONS PRIOR TO THE START OF CONSTRUCTION.

THIS DRAWING AND DESIGN ARE THE PROPERTY OF PEA, INC. THEY ARE SUBMITTED ON THE CONDITION THAT THEY ARE NOT TO BE USED, REPRODUCED OR COPIED IN WHOLE OR IN PART, OR USED FOR FURNISHING INFORMATION TO OTHERS, WITHOUT THE PRIOR WRITTEN CONSENT OF PEA, INC. ALL COMMON LAW RIGHTS OF COPYRIGHT AND OTHERWISE ARE HEREBY SPECIFICALLY RESERVED. © 2016 PEA, INC.

CONSTRUCTION CONTRACTOR AGREES THAT IN ACCORDANCE WITH GENERAL PRACTICES, CONSTRUCTION CONTRACTOR SHALL BE REQUIRED TO ASSUME SOLE AND COMPLETE RESPONSIBILITY FOR JOB SITE CONDITIONS DURING THE COURSE OF CONSTRUCTION OF THE PROJECT, INCLUDING SAFETY OF ALL PERSONS AND PROPERTY. THAT THIS REQUIREMENT SHALL BE MADE BY THE CONTRACTOR AND SHALL NOT BE LIMITED TO NORMAL WORKING HOURS AND CONSTRUCTION CONTRACTOR SHALL BE RESPONSIBLE FOR OBTAINING NECESSARY AND HOLD DESIGN PROFESSIONAL WARRANTIES FROM ANY AND ALL LIABILITY REAL OR ALLEGED, IN CONNECTION WITH THE PERFORMANCE OF WORK ON THIS PROJECT EXCEPTING LIABILITY ARISING FROM THE SOLE NEGLIGENCE OF THE DESIGN PROFESSIONAL.

3 FULL WORKING DAYS BEFORE YOU DIG CALL 811
 Know what's below
 Call before you dig
 MISS Dig System, Inc.
 1-800-482-7171 www.missdig.net



PEA, Inc.
 2430 Rochester Ct, Ste 100
 Troy, MI 48063-1872
 T: 248 688 9090
 F: 248 688 1044
 www.peainc.com

J B DONALDSON COMPANY
 37610 HILLS TECH DRIVE
 FARMINGTON HILLS, MI 48331

TREE PRESERVATION PLAN (S)
JENOPTIK ROCHESTER HILLS
 PART OF THE SOUTH 1/4 OF SECTION 21, T3N, R11E
 ROCHESTER HILLS, OAKLAND COUNTY, MICHIGAN

DES. JTS DN. SUR. DCL P.M. SAS
 S:\PROJECTS\2016\20160229\DWG\SITE PLANS\LV-TBLK-16029.DWG

ORIGINAL ISSUE DATE:
 MARCH 2, 2016

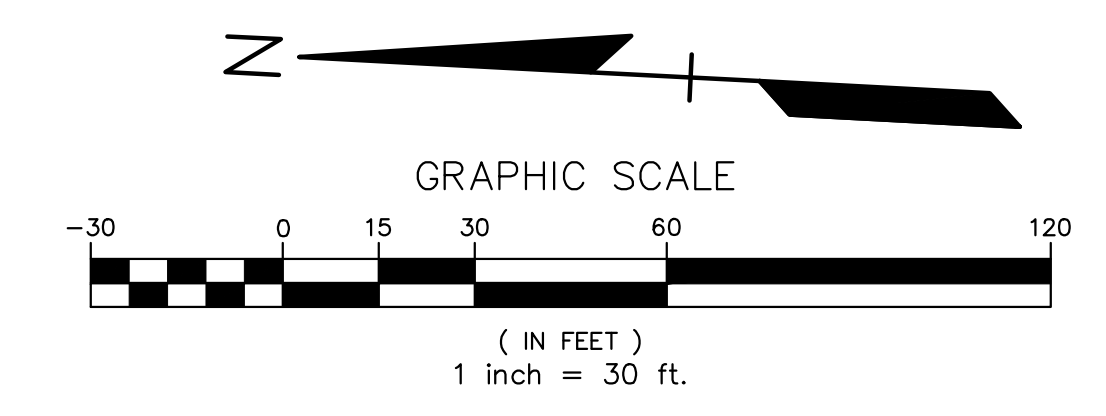
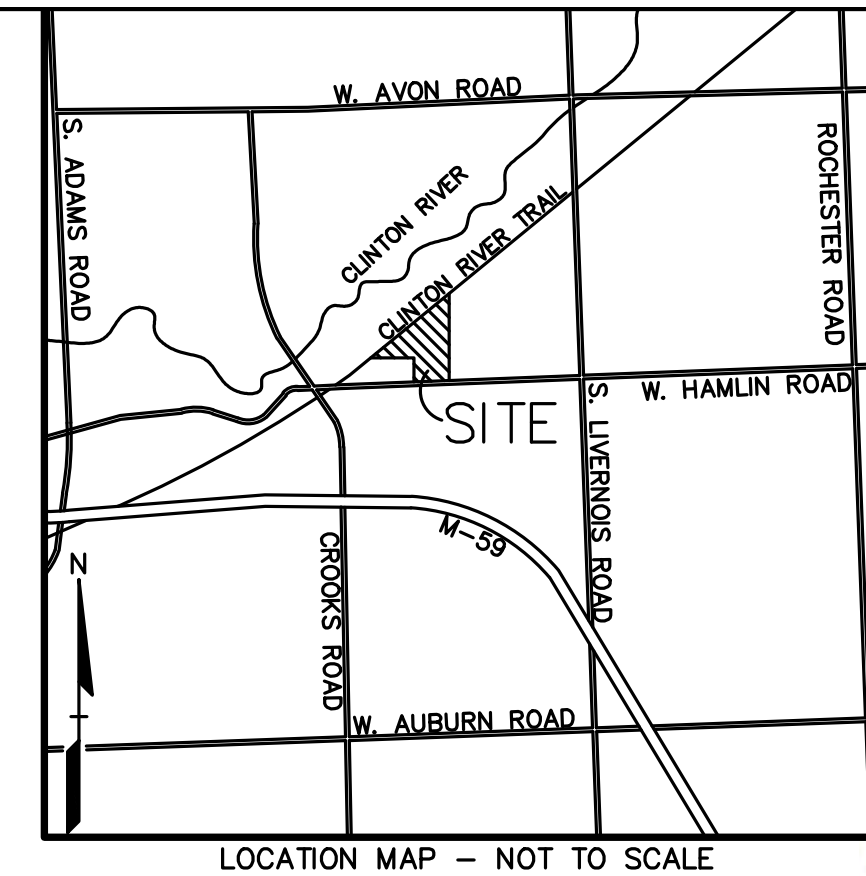
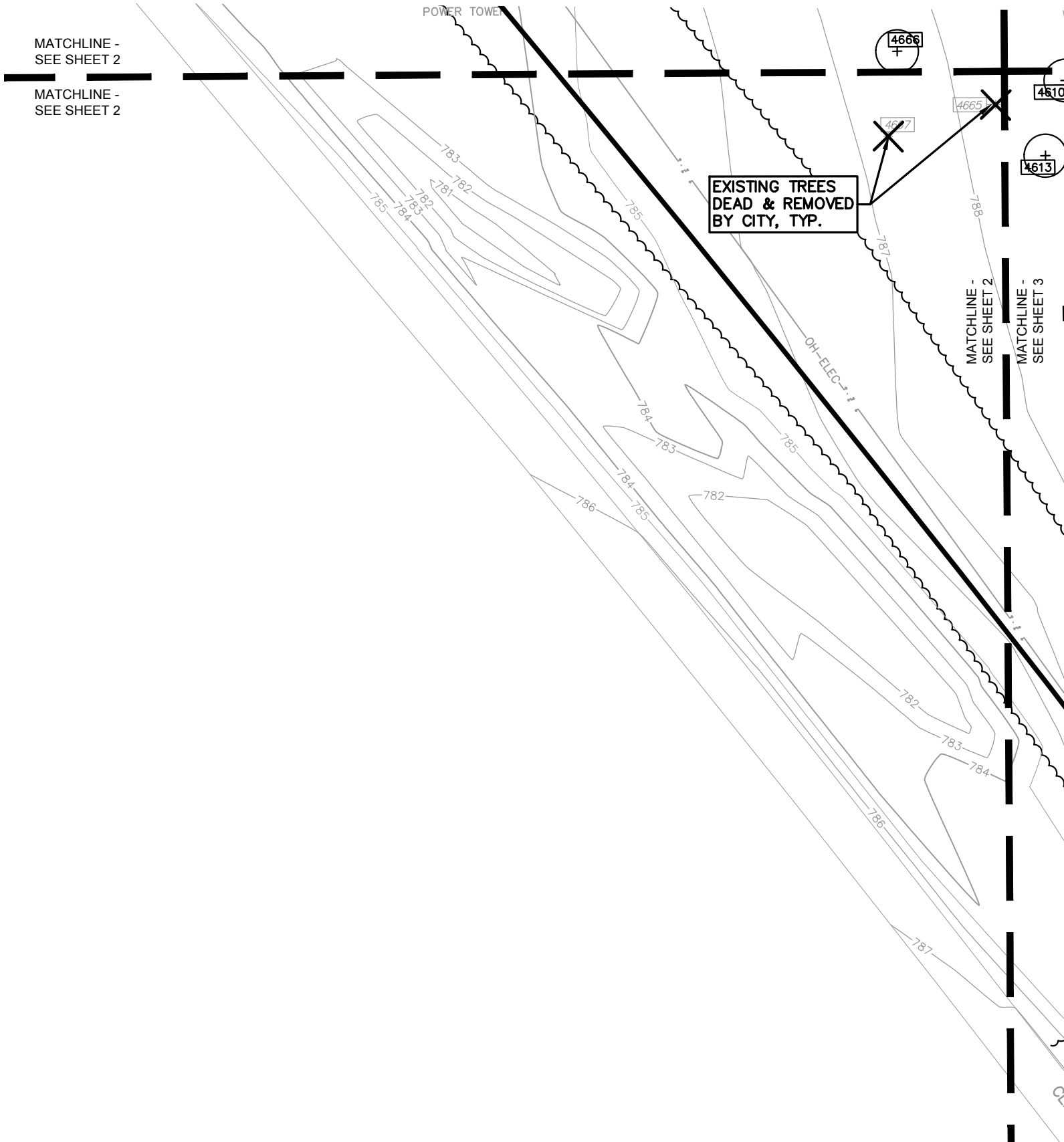
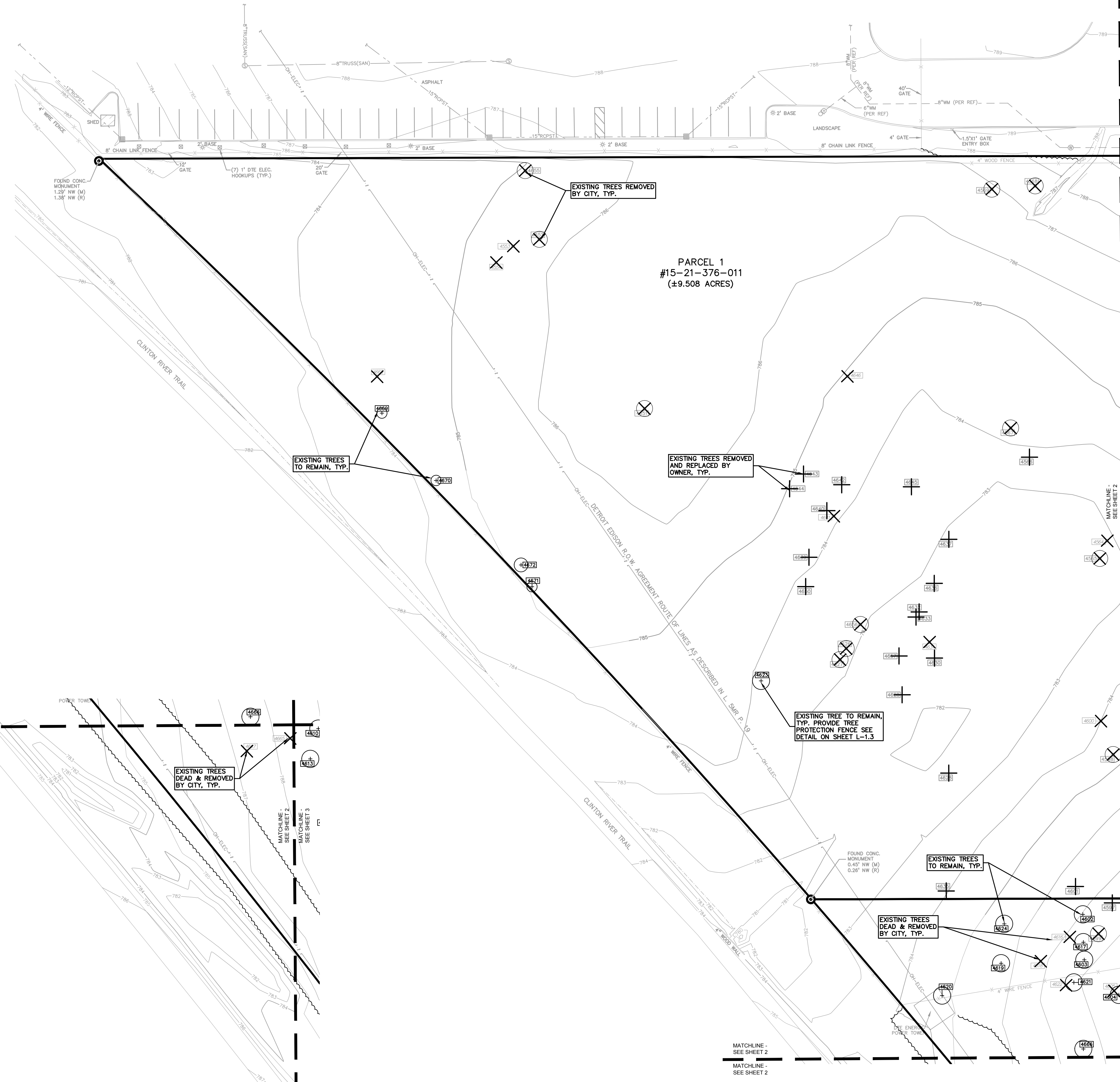
PEA JOB NO. 2016-029

SCALE: 1" = 30'

DRAWING NUMBER:
TREE-1.1

CITY FILE #16-002
NOT FOR CONSTRUCTION

XREF: S:\PROJECTS\2016\20160229\DWG\16029-TOPO.DWG
 XREF: S:\PROJECTS\2016\20160229\DWG\SITE PLANS\LV-BASE-16029.DWG
 XREF: S:\PROJECTS\2016\20160229\DWG\SITE PLANS\LV-TBLK-16029.DWG



- KEY:
- = EXISTING TREES TO REMAIN
 - = EXISTING TREES TO BE REMOVED BY OWNER
 - = EXISTING TREES TO BE REMOVED BY CITY
 - = EXISTING DEAD TREES TO BE REMOVED BY CITY

NO.	BY	CHK	DESCRIPTION	DATE
REVISIONS				



CAUTION!!
 THE LOCATIONS AND ELEVATIONS OF EXISTING UNDERGROUND UTILITIES AS SHOWN ON THIS DRAWING ARE ONLY APPROXIMATE. NO GUARANTEE IS EITHER EXPRESSED OR IMPLIED AS TO THE COMPLETENESS OR ACCURACY THEREOF. THE CONTRACTOR SHALL BE EXERCISING RESPONSIBILITY FOR DETERMINING THE EXACT UTILITY LOCATIONS AND ELEVATIONS PRIOR TO THE START OF CONSTRUCTION.

THIS DRAWING AND DESIGN ARE THE PROPERTY OF PEA, INC. THEY ARE SUBMITTED ON THE CONDITION THAT THEY ARE NOT TO BE USED, REPRODUCED OR COPIED IN WHOLE OR IN PART, OR USED FOR FURNISHING INFORMATION TO OTHERS, WITHOUT THE PRIOR WRITTEN CONSENT OF PEA, INC. ALL COMMON LAW RIGHTS OF COPYRIGHT AND OTHERWISE ARE HEREBY SPECIFICALLY RESERVED. © 2016 PEA, INC.

CONSTRUCTION CONTRACTOR AGREES THAT IN ACCORDANCE WITH GENERALY ACCEPTED CONSTRUCTION PRACTICES, CONSTRUCTION CONTRACTOR WILL BE REQUIRED TO ASSUME SOLE AND COMPLETE RESPONSIBILITY FOR JOB SITE CONDITIONS DURING THE COURSE OF CONSTRUCTION OF THE PROJECT, INCLUDING SAFETY OF ALL PERSONS AND PROPERTY. THAT THIS REQUIREMENT SHALL BE LIMITED TO NORMAL WORKING HOURS, AND CONSTRUCTION CONTRACTOR FURTHER AGREES TO DESIGN, INSTALL, MAINTAIN AND HOLD DESIGN PROFESSIONAL MEMBERS FROM ANY AND ALL LIABILITY REAL OR ALLEGED, IN CONNECTION WITH THE PERFORMANCE OF WORK ON THIS PROJECT EXCEPTING LIABILITY ARISING FROM THE SOLE NEGLIGENCE OF THE DESIGN PROFESSIONAL.

3 FULL WORKING DAYS BEFORE YOU DIG CALL

811

Know what's below
 Call before you dig

MISS Dig System, Inc.
 1-800-482-7171 www.missdig.net



PEA, Inc.
 2430 Rochester Ct, Ste 100
 Troy, MI 48063-1872
 T: 248 689 9090
 F: 248 689 1044
 www.peainc.com

J B DONALDSON COMPANY 37610 HILLS TECH DRIVE FARMINGTON HILLS, MI 48331	TREE PRESERVATION PLAN (N) JENOPTIK ROCHESTER HILLS PART OF THE SOUTH 1/4 OF SECTION 21, T3N, R11E ROCHESTER HILLS, OAKLAND COUNTY, MICHIGAN	DES.	JTS	DN.	KRB	SUR.	DLG	SAS
		DATE	NOV 16 2016	NOV 16 2016	NOV 16 2016	NOV 16 2016	NOV 16 2016	NOV 16 2016

ORIGINAL ISSUE DATE:
 MARCH 2, 2016

PEA JOB NO. 2016-029

SCALE: 1" = 30'

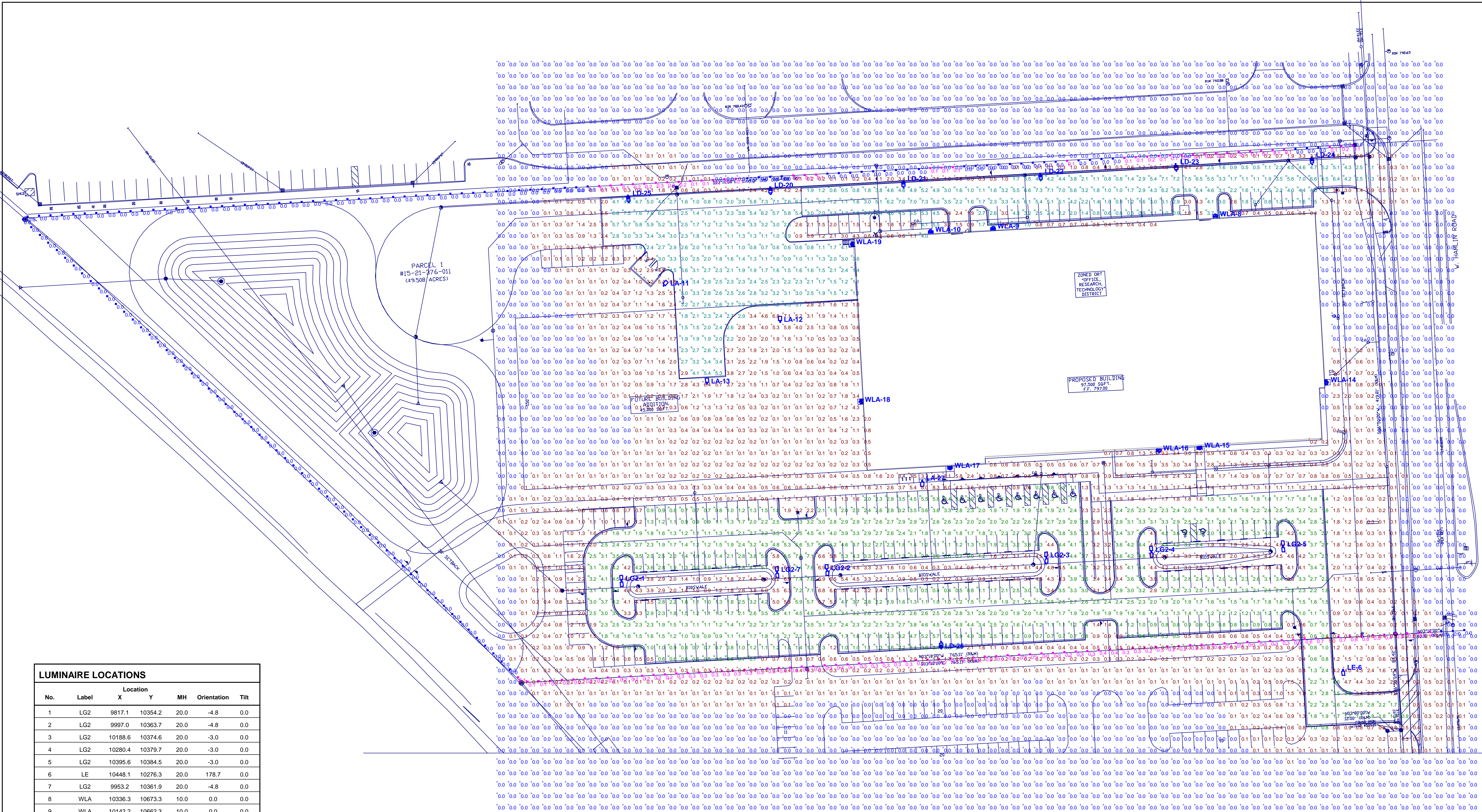
DRAWING NUMBER:
TREE-1.2

CITY FILE #16-002
NOT FOR CONSTRUCTION

XREF: S:\PROJECTS\2016\2016029\DWG\16029-TOPO.DWG
 XREF: S:\PROJECTS\2016\2016029\DWG\SITE_PLANS\V-BASE-16029.DWG
 XREF: S:\PROJECTS\2016\2016029\DWG\SITE_PLANS\V-TBLK-16029.DWG



JENOPTIK
 SITE LIGHTING PHOTOMETRIC VALUES
 PREPARED FOR: RICH OSTERMAN ELECTRIC CO.
 GASSER BUSH ASSOCIATES



SITE LIGHTING VALUES AT GRADE
Scale 1" = 40'

LUMINAIRE LOCATIONS						
No.	Label	Location X	Location Y	MH	Orientation	Tilt
1	LG2	9817.1	10354.2	20.0	-4.8	0.0
2	LG2	9997.0	10363.7	20.0	-4.8	0.0
3	LG2	10188.6	10374.6	20.0	-3.0	0.0
4	LG2	10280.4	10379.7	20.0	-3.0	0.0
5	LG2	10395.6	10384.5	20.0	-3.0	0.0
6	LE	10448.1	10276.3	20.0	178.7	0.0
7	LG2	9953.2	10361.9	20.0	-4.8	0.0
8	WLA	10336.3	10673.3	10.0	0.0	0.0
9	WLA	10142.2	10662.3	10.0	0.0	0.0
10	WLA	10087.4	10659.6	10.0	0.0	0.0
11	LA	9853.9	10612.5	20.0	41.5	0.0
12	LA	9955.9	10580.8	20.0	-2.0	0.0
13	LA	9892.1	10526.8	20.0	-2.2	0.0
14	WLA	10433.2	10527.8	10.0	85.3	0.0
15	WLA	10322.6	10470.8	10.0	173.9	0.0
16	WLA	10286.9	10468.6	10.0	177.1	0.0
17	WLA	10104.4	10453.1	10.0	175.0	0.0
18	WLA	10026.8	10511.0	10.0	262.7	0.0
19	WLA	10019.1	10648.9	10.0	265.1	0.0
20	LD	9947.1	10698.5	20.0	176.1	0.0
21	LD	10063.5	10704.2	20.0	176.1	0.0
22	LD	10183.3	10710.5	20.0	176.1	0.0
23	LD	10301.8	10718.8	20.0	176.1	0.0
24	LD	10420.6	10724.6	20.0	176.1	0.0
25	LD	9823.0	10691.2	20.0	176.1	0.0
26	LD	10096.8	10295.1	20.0	-3.2	0.0
27	LA	10080.1	10441.8	20.0	177.2	0.0

NOTES

- SEE MH COLUMN OF LUMINAIRE LOCATIONS FOR MOUNTING HEIGHTS.
- SEE LUMINAIRE SCHEDULE FOR LIGHT LOSS FACTORS.
- CALCULATIONS ARE SHOWN IN FOOTCANDLES AT GRADE SURFACE.

THE ENGINEER AND/OR ARCHITECT MUST DETERMINE APPLICABILITY OF THE LAYOUT TO EXISTING / FUTURE FIELD CONDITIONS. THIS LIGHTING LAYOUT REPRESENTS ILLUMINATION LEVELS CALCULATED FROM LABORATORY DATA TAKEN UNDER CONTROLLED CONDITIONS IN ACCORDANCE WITH ILLUMINATING ENGINEERING SOCIETY APPROVED METHODS. ACTUAL PERFORMANCE OF ANY MANUFACTURER'S LUMINAIRE MAY VARY DUE TO VARIATION IN ELECTRICAL VOLTAGE, TOLERANCE IN LAMPS, AND OTHER VARIABLE FIELD CONDITIONS. MOUNTING HEIGHTS INDICATED ARE FROM GRADE AND/OR FLOOR UP.

THESE LIGHTING CALCULATIONS ARE NOT A SUBSTITUTE FOR INDEPENDENT ENGINEERING ANALYSIS OF LIGHTING SYSTEM SUITABILITY AND SAFETY. THE ENGINEER AND/OR ARCHITECT IS RESPONSIBLE TO REVIEW FOR MICHIGAN ENERGY CODE AND LIGHTING QUALITY COMPLIANCE.

STATISTICS						
Description	Symbol	Avg	Max	Min	Max/Min	Avg/Min
OVERALL LTG VALUES	+	0.9 fc	9.2 fc	0.0 fc	N/A	N/A
PARKING LOT 1	X	2.4 fc	7.6 fc	0.4 fc	19.0:1	6.0:1
PARKING LOT 2	X	3.0 fc	7.6 fc	0.5 fc	15.2:1	6.0:1
PROPERTY LINE	■	0.1 fc	1.0 fc	0.0 fc	N/A	N/A

LUMINAIRE SCHEDULE							
Symbol	Label	Qty	Catalog Number	Description	Lamp	File	Lumens LLLF Watts
□	LA	4	LITHONIA #DSX1 LED 60C 1000 50K TSM MVOLT	DSX1 LED WITH 60 LEDs @ 1000 mA, 5000K, TYPE 4 MEDIUM OPTICS	LED	DSX1_LED_60 C_1000_50K_T 4M_MVOLT.ies	209
□	LD	7	LITHONIA #DSX1 LED 60C 1000 40K BLC MVOLT	DSX1 LED WITH 60 LEDs @ 1000 mA, 4000K, BACKLIGHT CONTROL OPTIC	LED	DSX1_LED_60C 1000_40K BLC MVOLT.ies	209
□	LE	1	LITHONIA #DSX1 LED 60C 1000 40K TSM MVOLT	DSX1 LED WITH (2) 30 LED LIGHT ENGINES, TYPE TSM OPTIC, 4000K, @ 1000mA	LED	DSX1_LED_60 Absolute C_1000_40K T 3M_MVOLT.ies	209.28
□	LG2	6	LITHONIA #DSX1 LED 60C 1000 50K TSW MVOLT	DSX1 LED WITH (2) 30 LED LIGHT ENGINES, TYPE TSW OPTIC, 5000K, @ 1000mA	LED	DSX1_LED_60 Absolute C_1000_50K T 5W_MVOLT.ies	418.56
□	WLA	9	LITHONIA #WST LED 2 10A700/50K SR4 MVOLT	WST LED WITH 1 MODULE, 20 LEDs, 700mA DRIVER, 5000K COLOR TEMPERATURE, TYPE 4 LENS	LED	WST_LED_2.1 Absolute 0A700_50K S R4_MVOLT.ies	47

Designer
TD/KJS/JAB

Date
MAR 01 2016

Scale
AS NOTED

Drawing No.
#16-50694-V5

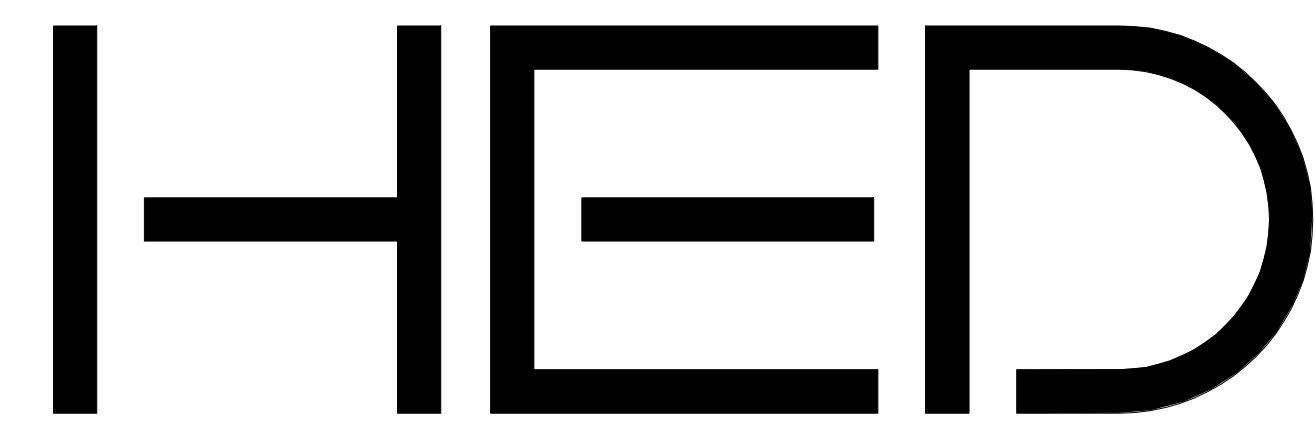
Calculated values include direct and interreflected components.



Jenoptik Technical Workplace

Rochester Hills, MI

Site Plan Approval
03-02-2016
PROJECT NO. 2016-01233-000



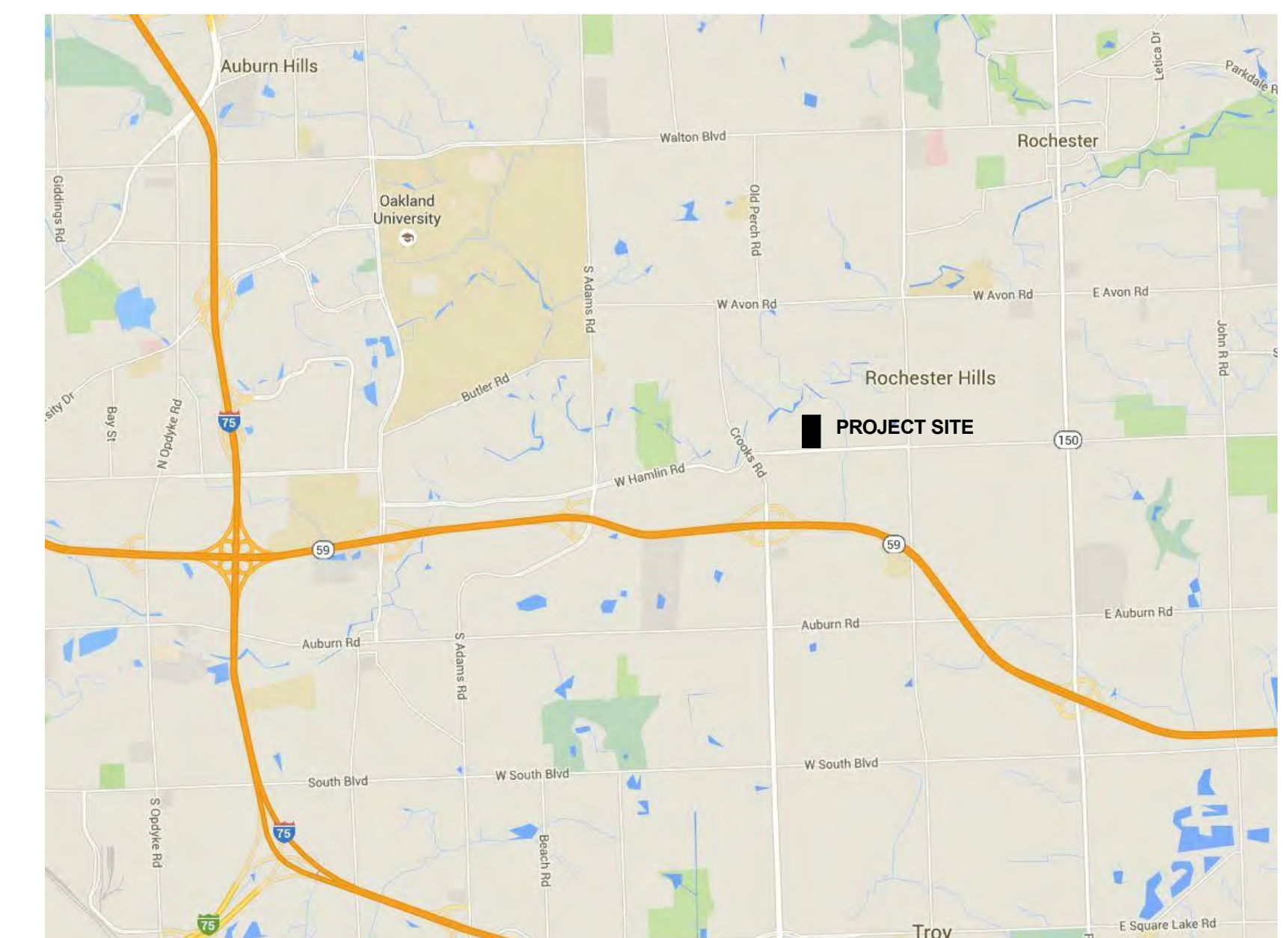
26913 Northwestern Hwy
Suite 200
Southfield, Michigan
48033-3476 | USA

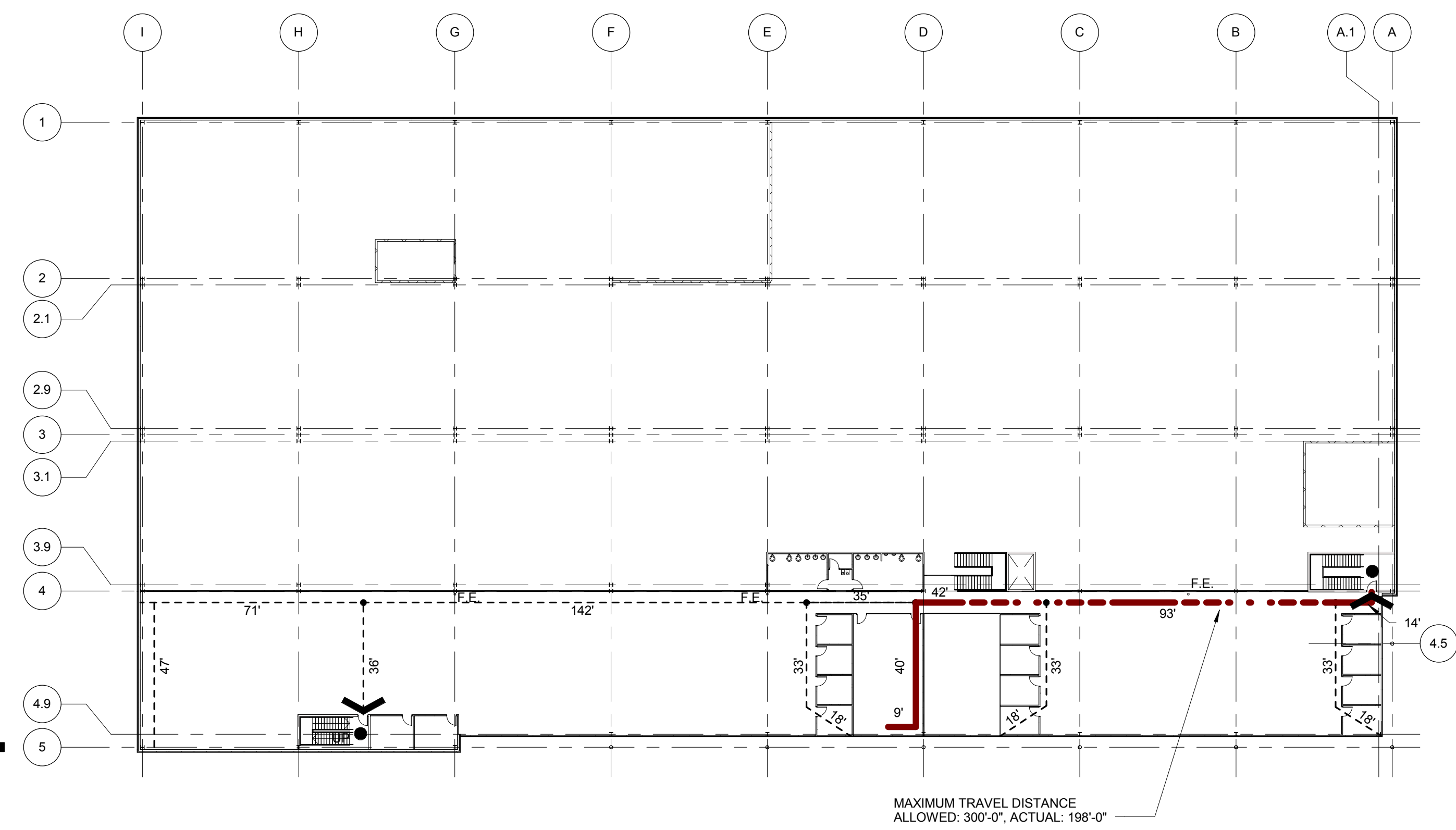
(tel) (248) 262.1500
(fax) (248) 262.1515
harleyellisdevereaux.com

Planning
Architecture
Engineering
Interior Architecture
Landscape Architecture
Construction Services

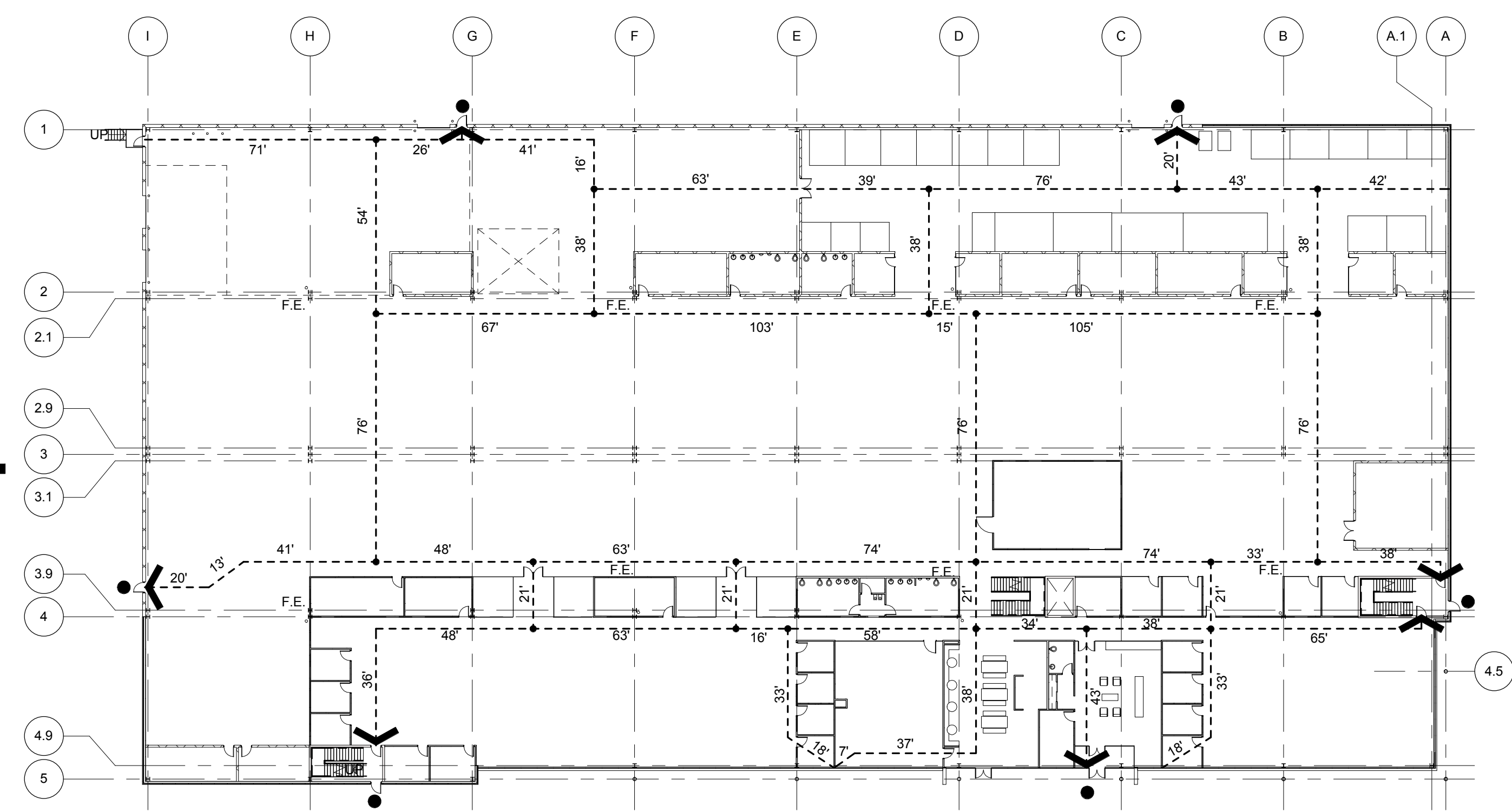
Copyright © 2016

DRAWING LIST		
Sheet Number	Sheet Name	Sheet Issued For
AG-01	Title Sheet	Site Plan Approval
AG-21	Code Summary	Site Plan Approval
AP-01	First Floor & Mezzanine Plan	Site Plan Approval
A2-01	Exterior Building Elevations	Site Plan Approval





MEZZANINE CODE SUMMARY PLAN
SCALE: 1/32" = 1'-0"



FIRST FLOOR CODE SUMMARY PLAN
SCALE: 1/32" = 1'-0"



CODE ANALYSIS FORM		HED	
Jenoptik Technical Workplace		Building Department Contact: Fire Marshall: Rochester Hills, MI	
APPLICABLE CODES: 2012 MICHIGAN BUILDING CODE (MBC) 2012 MICHIGAN PLUMBING CODE (MPC) 2012 MICHIGAN MECHANICAL CODE (MMC) 2014 NATIONAL ELECTRICAL CODE (NEC) 2012 INTERNATIONAL FIRE CODE (IFC)		ASHRAE 90.1 2009 - MICHIGAN ENERGY CODE ASHRAE 62-2001 NFPA 13 - 2010 FOR FIRE PROTECTION NFPA 72 - 2010 FOR FIRE ALARM MICH. BARRIER FREE - ICC/ANSI A117.1 - 2009	
SUMMARY		DECISION	
BUILDING USE GROUP: Mixed Use, Non-Separated (T 508.4), Acc. Use: S-1 Area = 5,000 SF < 10% Floor Area		F-1/B S 302.1 / PG 41	
TYPE OF CONSTRUCTION: (FPS)		IBB T 503 / PG 96	
FIRE SUPPRESSION PROVIDED: (FPS)		YES S 903.3.1.1	
ACTUAL FLOOR AREA (gross floor area / floor)		100,000 sf	
ACTUAL STORIES		1	
ACTUAL BUILDING HEIGHT (at top of coping)		32'-0"	
ACTUAL BUILDING FRONTAGE		200'-0"	
ACTUAL OCCUPANCY LOAD		1200'-0"	
TABULAR FLOOR AREA		23,000 sf	
TABULAR STORIES		3	
TABULAR BUILDING HEIGHT		55 ft	
TABULAR OCCUPANCY LOAD		100 GROSS PER OCCUPANT	
GENERAL BUILDING HEIGHTS AND AREAS		CHAPTER 5	
UNLIMITED AREA BUILDING (Sprinklered, one story surrounded and adjoined by public ways or yards not less than 60 feet)		Unlimited S 507.3	
TYPES OF CONSTRUCTION		CHAPTER 6	
FIRE-RESISTANCE RATING REQUIREMENTS FOR BUILDING ELEMENTS		-	
Structural frame		0 HR T 601 / PG 107	
Bearing wall		0 HR T 601 / PG 107	
Non-bearing wall		0 HR T 601 / PG 107	
Floor Construction		0 HR T 601 / PG 107	
Roof Construction		0 HR T 601 / PG 107	
FIRE-RESISTANCE RATING REQUIREMENTS FOR EXTERIOR WALLS BASED ON FIRE SEPARATION DISTANCE		0 HR T 602 / PG 108	
Greater than "X" ft - construction type "X"		0 HR T 602 / PG 108	
FIRE-RESISTANCE RATED CONSTRUCTION		CHAPTER 7	
EXTERIOR WALL RATING		Per T 601 & 602	
EXTERIOR WALL OPENING		No Limit T 705.8	
SHAFT AND VERTICAL EXIT ENCLOSURES		1 HR S 708.3	
Supporting Construction (not within a rated enclosure)		1 HR S 708.4	
Machine Room		1 HR S 3006.4	
INTERIOR FINISHES		CHAPTER 8	
Vertical Exits and Exit Passageways		(F-1) C T 803.9	
Exit Access Corridors and other Exitways		(F-1) C T 803.9	
Rooms and Enclosed Spaces		(F-1) C T 803.9	
MEANS OF EGRESS COMPONENTS - FIRE RESISTANCE RATINGS		CHAPTER 10	
EXIT ACCESS		S 1014	
EXIT ACCESS CORRIDOR FIRE RATING		0 HR T 1018.1	
COMMON PATH OF EGRESS TRAVEL		100' ft S 1014.3	
EXITWAY		S 1009	
SHAFT ENCLOSURES		1-HR < 4 STORIES 2-HR	
VERTICAL EXIT ENCLOSURE		1 HR S 713.4	
EXIT PASSAGeways		1 HR S 1022.1	
EGRESS, EXIT AND EXIT ACCESS LIMITATIONS FOR B		CHAPTER 10	
MAXIMUM OCCUPANT LOAD		100 S.F. PER OCCUPANT	
MAXIMUM LENGTH OF EXIT ACCESS TRAVEL		200' W/O FPS 300' W/FPS	
MAXIMUM LENGTH OF COMMON PATH OF EGRESS TRAVEL DIST.		Exception No. 1 100' ft T 1016.2	
MAXIMUM LENGTH OF DEAD END CORRIDOR		Exception No. 2 50' ft S 1014.3	
MINIMUM # EXITS FOR OCCUPANT LOAD		[1-500P - 2] [501-1,000P - 3] [Over 1,000P - 4]	
MINIMUM CORRIDOR WIDTH		44" S 1021.2	
MINIMUM EXIT EGRESS WIDTH		(.2 x "X" Occupant Load) 36" S 1018.2	
MINIMUM STAIR WIDTH		(.2 x "X" Occupant Load) 44" S 1009.4	
MINIMUM RAMP WIDTH		(.2 x "X" Occupant Load) 36" S 1010.6.1	
MINIMUM AISLES WIDTH		(.15 x "X" Occupant Load) 36" S 1005.3 / S 1017.3	
PLUMBING FIXTURE COUNTS BY FLOOR		MBC & MPC	
MICHIGAN BUILDING CODE		T 1004.1.2(MBC)	
MICHIGAN PLUMBING CODE		S 403.1 (MPC)	
Use Group		T 403.1 (MPC)	
Level 1		60,000 gsf (F-1) 600 6 6 2	
Level 1		20,000 gsf (B) 200 5 4 2	
Mezzanine		20,000 gsf (B) 200 5 4 2	
Urinals shall not be substituted for more than 67% (Group A&E) 50% (All other occupancies) of required water closets		S 419.2 (MPC)	
Accessibility in accord w/Michigan Building Code 1 fixture of each type / toilet room minimum		S 1109.2 (MBC)	
Maximum Travel Distance= 500' and not more than 1 story above or below		S 403.3.3 (MPC)	
*F-1: WC: 1 per 100, Lavs 1 per 100, DF: 1 per 400			
*Business: WC:1 per 25 for the first 50 and 1 per 50 for the remainder exceeding 50.			
Lavs:1 per 40 for the first 80 and 1 per 80 for the remainder exceeding 80, DF: 1 per 100			
MAXIMUM TRAVEL DISTANCE		75 ft IFC	
NUMBER OF FIRE EXTINGUISHERS		11,250 sf Maximum per Extinguisher	
FIRE SUPPRESSION PROVIDED		MBC	
STAND PIPE		Buildings > 30ft Above Lowest Level of the Fire Department Vehicle Access	
AUTOMATIC SPRINKLER SYSTEM		Req'd for Bldgs > 30 ft in Height & Floor Level w/ Occupant Load of 30 or more	
FIRE ALARMS & DETECTION SYSTEMS		Required 500 or More Occupants (Group B)	



Jenoptik Technical Workplace

Rochester Hills, MI

Date Issue
03-02-2016 Site Plan Approval



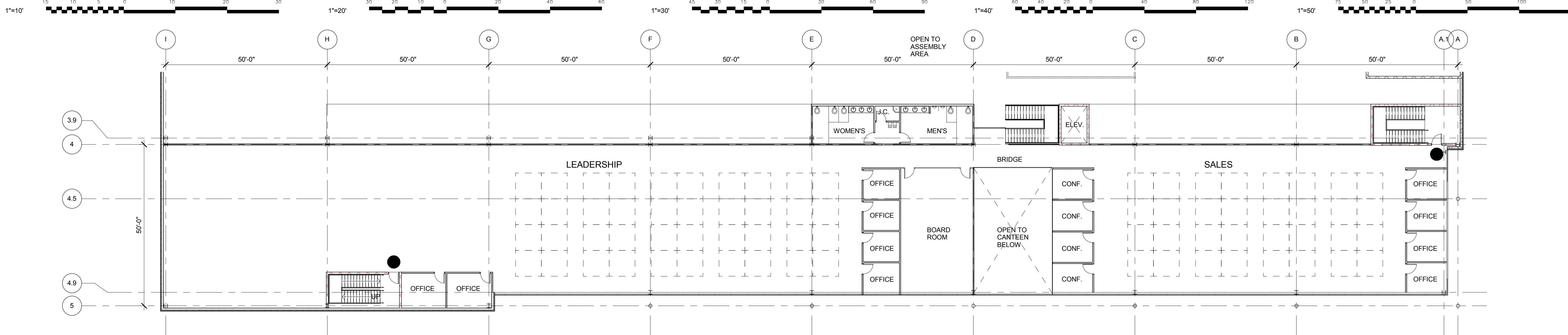
26913 NORTHWESTERN HWY
SUITE 200
SOUTHFIELD, MICHIGAN
48033-3476 | USA
(T) 248 262 1500
WWW.HED.DESIGN

PROJECT NUMBER:
2016-01233-000

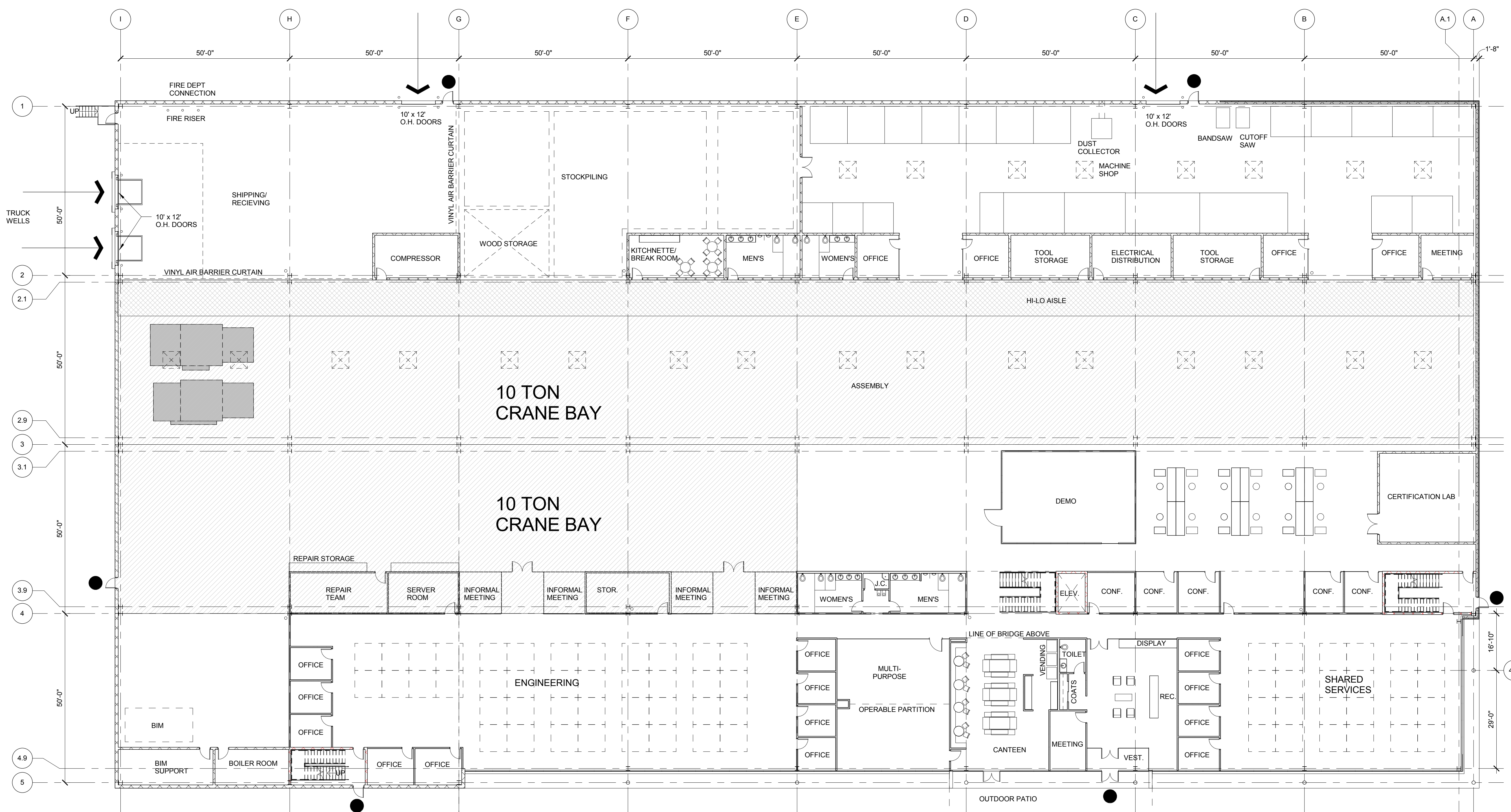
SHEET TITLE:
Code Summary

SHEET NUMBER:
AG-21

COPYRIGHT © 2016



MEZZANINE PLAN
SCALE: 1/16" = 1'-0"



FIRST FLOOR PLAN
SCALE: 1/16" = 1'-0"



Jenoptik Technical Workplace

Rochester Hills, MI

Date Issue
03-02-2016 Site Plan Approval

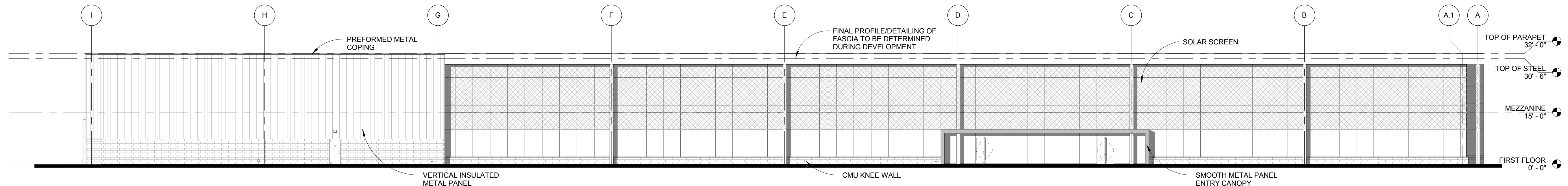


26913 NORTHWESTERN HWY
SUITE 200
SOUTHFIELD, MICHIGAN
48033-3476 | USA
(T) 248 262 1500
WWW.HED.DESIGN

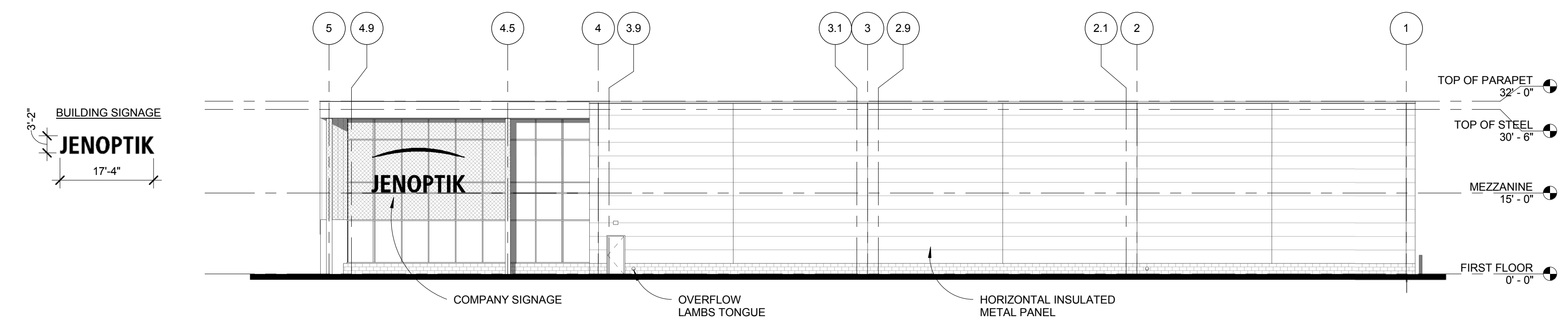
PROJECT NUMBER:
2016-01233-000
SHEET TITLE:
First Floor & Mezzanine Plan

SHEET NUMBER:
AP-01

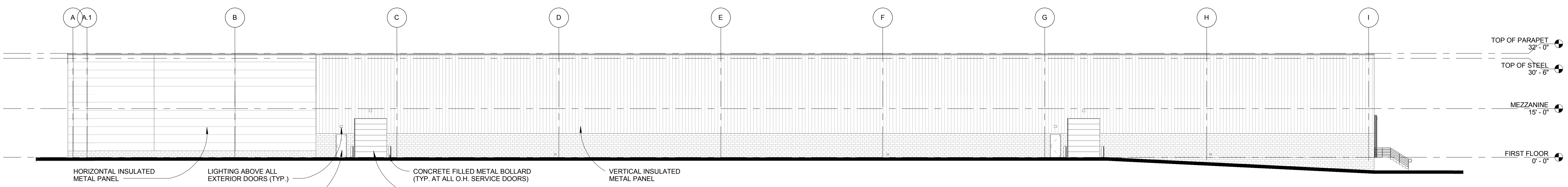
COPYRIGHT © 2016



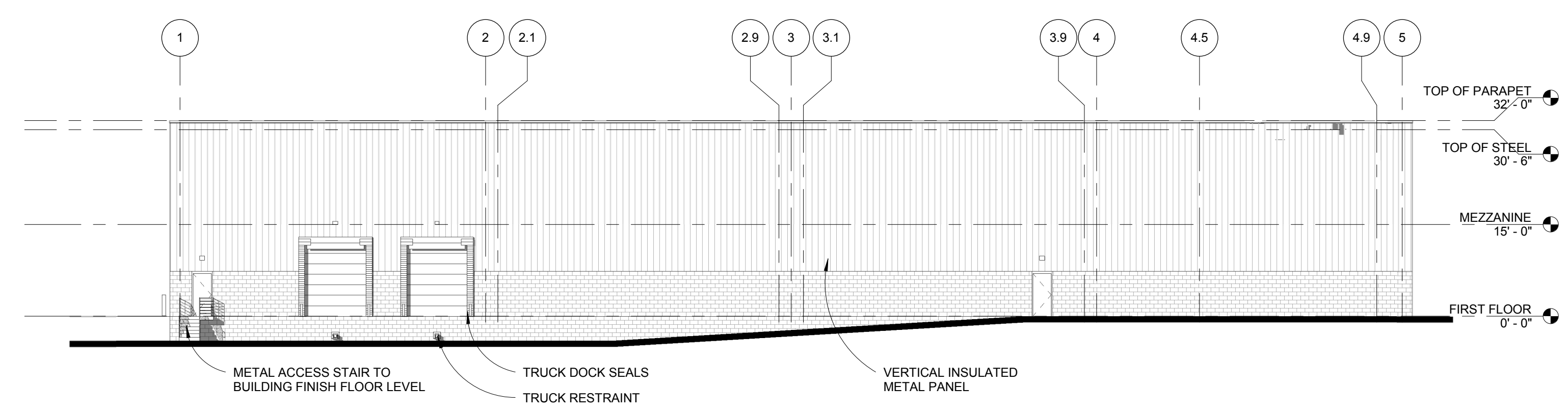
4 WEST ELEVATION
SCALE: 1/16" = 1'-0"



3 SOUTH ELEVATION
SCALE: 1/16" = 1'-0"



2 EAST ELEVATION
AI-01a SCALE: 1/16" = 1'-0"



1 NORTH ELEVATION
SCALE: 1/16" = 1'-0"



Jenoptik Technical Workplace

Rochester Hills, MI

Date Issue
03-02-2016 Site Plan Approval



26913 NORTHWESTERN HWY
SUITE 200
SOUTHFIELD, MICHIGAN
48033-3476 | USA
(T) 248 262 1500
WWW.HED.DESIGN

PROJECT NUMBER:
2016-01233-000
SHEET TITLE:
Exterior Building Elevations

SHEET NUMBER:
A2-01

COPYRIGHT © 2016

