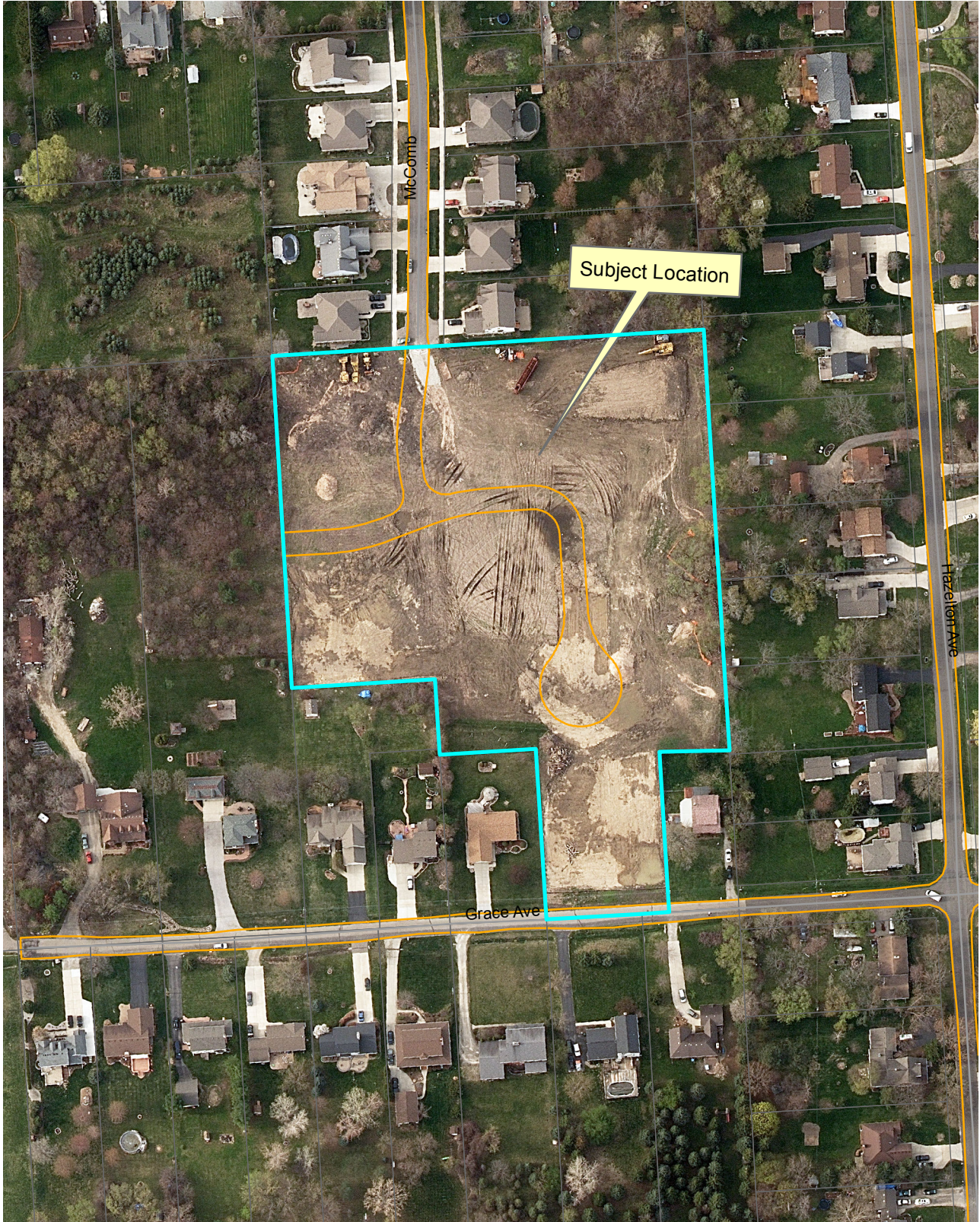


Location Map Grace Park Subdivision



Legend

	TaxParcel (2014) Owner Name
	SubParcel
	Neighborhood
	Soil
	Red_Bank_1
	Green_Bank_2
	Blue_Bank_3

Aerial photographs as of April 2010.
TaxParcel lines were obtained on 1/2/14 from Oakland County.
Although the information provided by this map is believed to be reliable, its accuracy is not warranted in any way. The City of Rochester Hills assumes no liability for any claims arising from the use of this map.

1/2/15

1 inch = 167 feet