

WATERMAIN EASEMENT
(Barrington Park of Rochester Hills)

Pulte Land Company, LLC, ("Grantor") a Michigan limited liability company whose address is 100 Bloomfield Hills Parkway, Bloomfield Hills, Michigan 48304 grants to the CITY OF ROCHESTER HILLS ("City"), a Michigan municipal corporation, of 1000 Rochester Hills Drive, Rochester Hills, Michigan 48309, an easement for the construction, operation, maintenance, repair and/or replacement of a watermain on, under through and across land more particularly described as:

See Attached Exhibit A

Tax Parcel Number 15-26-376-007 (part)

In connection with the grant of easement, and upon acceptance by the City of a dedication of the watermain and related facilities as public utilities, Grantor waives and relinquishes any of Grantor's right, title or interest in the watermain, or related facilities, which may be located in the easement.

All property disturbed or altered, now or in the future, by reason of the construction, operation, maintenance, repair and/or replacement of the watermain shall be restored by the City to its immediately prior condition, except to the extent permanent improvements or alterations necessary to the use and exercise of easement rights granted hereunder are made within the easement area.

The easement shall be irrevocable and non-exclusive, and Grantor and Grantor's transferees, successors and assigns, and the condominium association established by Grantor to administer Barrington Park of Rochester Hills may use and enjoy the easement area in common with the City.

Grantor expressly reserves to Grantor and Grantor's transferees, successors and assigns, and the condominium association established by Grantor to administer Barrington Park of Rochester Hills, so long as there is no interference with the construction, operation, maintenance, repair and/or replacement of the watermain: (a) the right of ingress and egress over, through and across the easement, and (b) the right to grant other non-exclusive easements and rights-of-way across, over, under and through the easement parcel, with the condition that prior to such a grant written consent shall be obtained from the City.

For the consideration of less than \$100. Exempt from Transfer Taxes under MCL 207.505(a) and 207.526(a).

IN WITNESS HEREOF, the undersigned have hereunto affixed their signatures on this 19th day of August, 2015.

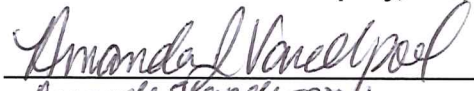
PULTE LAND COMPANY, LLC

By: 
Kevin Christofferson

Its: Vice President of Finance

STATE OF MICHIGAN)
) ss.
COUNTY OF OAKLAND)

Acknowledged before me on August 19th, 2015, by Kevin Christofferson, Vice President of Finance of Pulte Land Company, LLC, a Michigan limited liability company, on behalf of the company.


Amanda J. Vanderpool
Notary Public Oakland County, Michigan
Acting in Oakland County, Michigan
My Commission Expires: March 5, 2020

Embossed Hereon Is My
Oakland County, Michigan Notary Public Seal
My Commission Expires March 05, 2020
AMANDA J. VANDERPOOL

Drafted by:

Sandra Sorini Elser
Bodman PLC
201 S. Division Street, Suite 400
Ann Arbor, MI 48104

When recorded, return to:

City of Rochester Hills
1000 Rochester Hills Drive
Rochester Hills, MI 48309


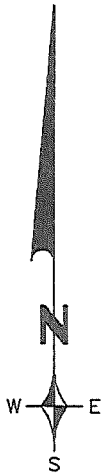
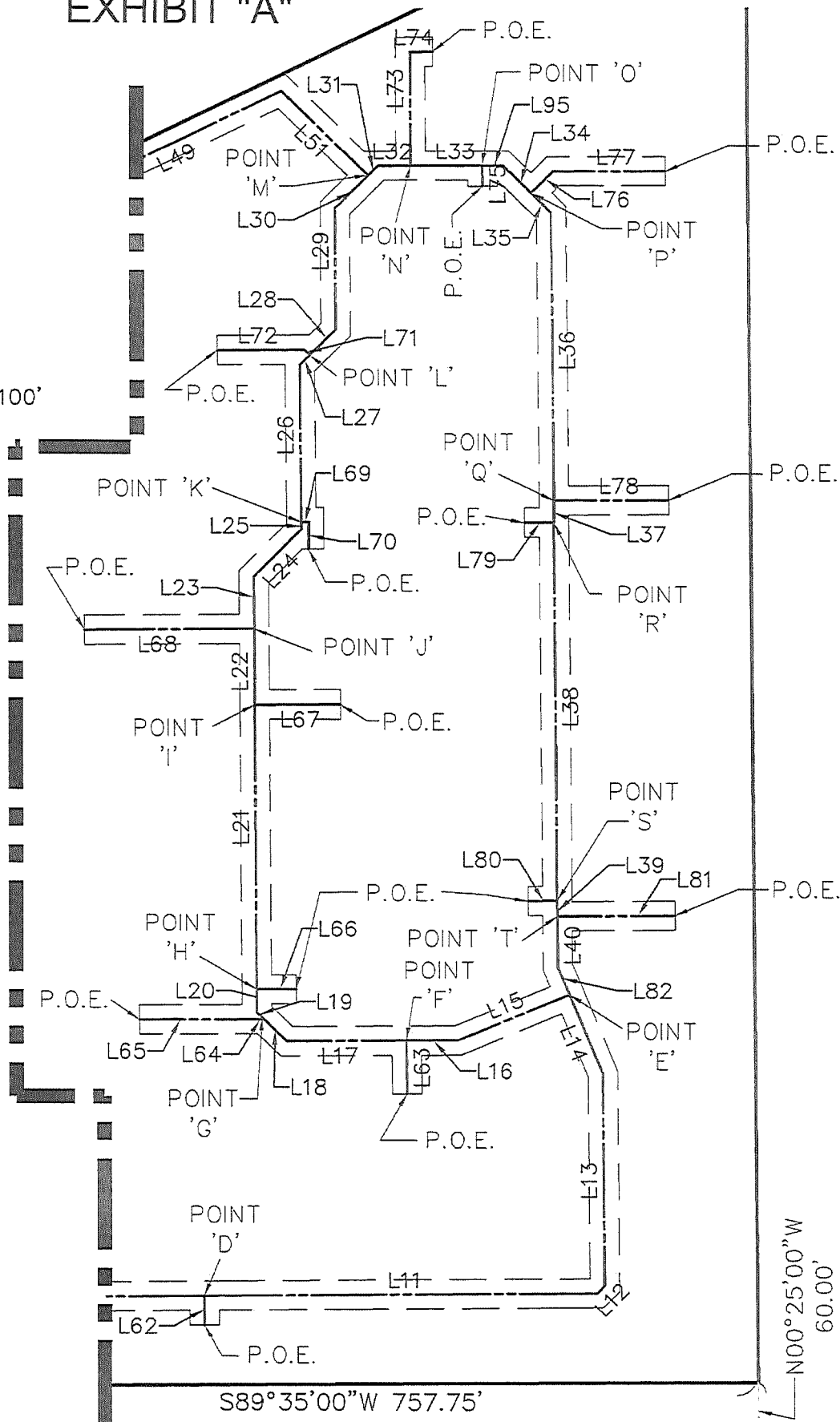

Approved 9/1/15

EXHIBIT "A"



SCALE: 1" = 100'

MATCH LINE SHEET 2/5



E. AUBURN ROAD
(60' WD., 1/2 WIDTH)

S89°35'00"W 20.00'

S. 1/4 COR.
SECTION 26
T. 3 N., R. 11 E.,
ROCHESTER HILLS,
OAKLAND CO., MI.

LEGEND

P.O.B. POINT OF BEGINNING
P.O.E. POINT OF ENDING

*Mike Taut
Approved 9/17/15*

Z:\Projects\13178\DWG\13178_WM ESMTS.dwg, WM ESMT 1, 9/17/2015 10:21:07 AM, sbiaszczyk

REVISIONS		
ITEM	DATE	BY
PER CITY REVIEW	9/17/15	SRB

**WATERMAIN EASEMENT
BARRINGTON PARK**

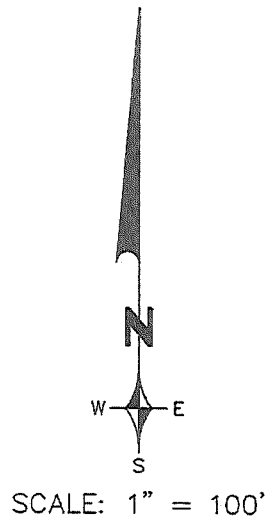
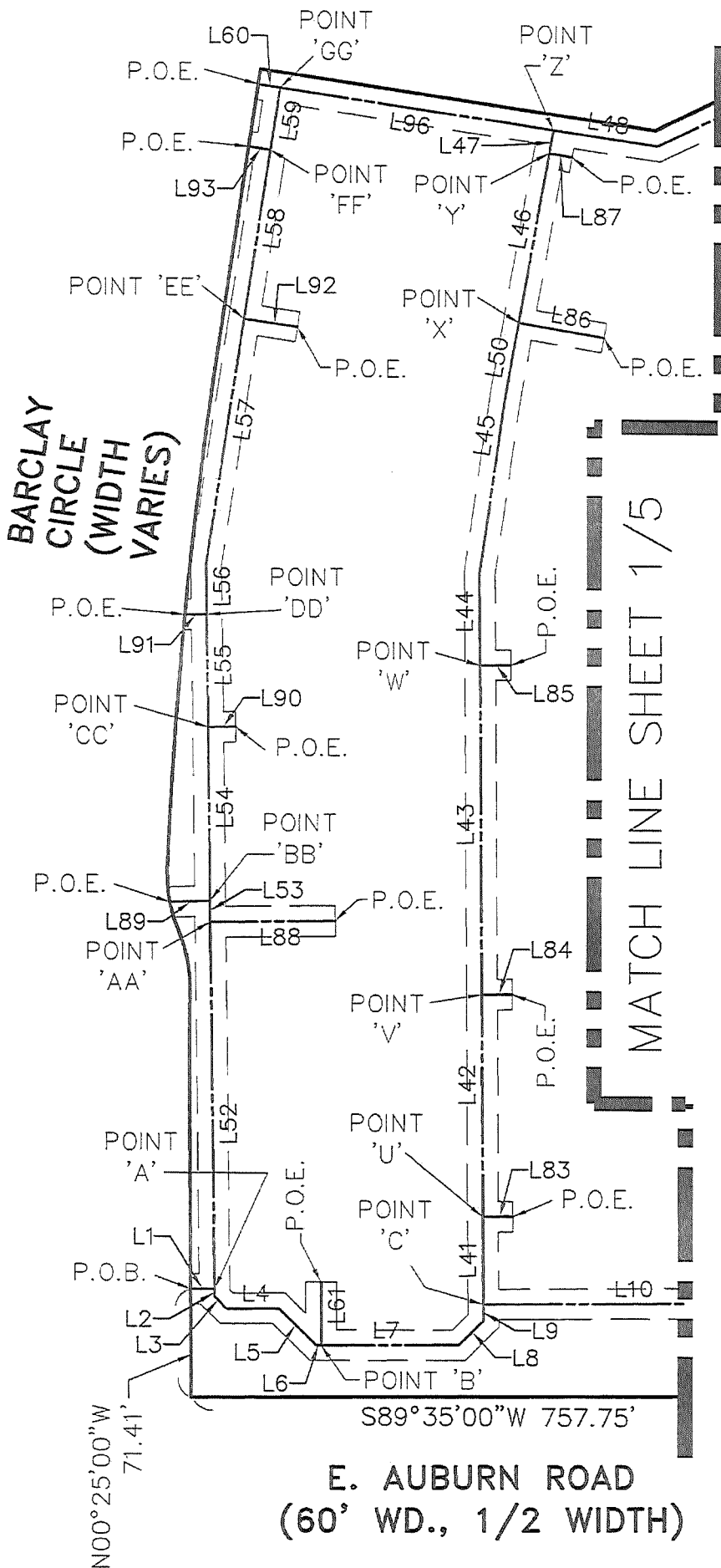
ROCHESTER HILLS MICHIGAN

ZEIMET WOZNAK
& ASSOCIATES
Civil Engineers & Land Surveyors
55800 GRAND RIVER AVE. SUITE 100
NEW HUDSON, MICHIGAN 48165
P: (248) 437-5099 F: (248) 437-5222 www.zeimetwozniak.com

DATE	SCALE HOR: 1" = 100' FIELD BOOK NO.
DESIGNED BY	JOB NO. 13178
DRAWN BY PTG	SHEET NO. 1/5

© COPYRIGHT 2015

EXHIBIT "A"



LEGEND

- P.O.B. POINT OF BEGINNING
- P.O.E. POINT OF ENDING

Z:\Projects\13178\DWG\13178 WM ESMTS.dwg, WM ESMT 2, 9/17/2015 10:21:08 AM, sbblaszyk

REVISIONS		
ITEM	DATE	BY
PER CITY REVIEW	9/17/15	SRB

WATERMAIN EASEMENT
BARRINGTON PARK
 ROCHESTER HILLS MICHIGAN

ZEIMET WOZNAK
 & ASSOCIATES
 Civil Engineers & Land Surveyors
 55800 GRAND RIVER AVE, SUITE 100
 NEW HUDSON, MICHIGAN 48165
 P: (248) 437-5099 F: (248) 437-5222 www.zeimetwozniak.com

DATE	SCALE HOR: 1" = 100'
DESIGNED BY	JOB NO. 13178
DRAWN BY PTG	SHEET NO. 2/5

FIELD BOOK NO.
© COPYRIGHT 2015

EXHIBIT "A"

LINE TABLE		
Line #	Direction	Length
L1	N89°42'20"E	15.46'
L2	S00°42'13"E	5.00'
L3	S45°15'12"E	11.25'
L4	N89°44'48"E	33.91'
L5	S45°15'12"E	34.06'
L6	N89°44'48"E	3.10'
L7	N89°44'48"E	89.39'
L8	N44°31'10"E	22.54'
L9	N00°19'44"W	10.94'
L10	N89°27'03"E	192.79'
L11	N89°27'03"E	266.06'
L12	N44°27'03"E	7.09'
L13	N00°25'59"W	145.33'
L14	N22°35'31"W	58.17'
L15	S67°24'29"W	81.98'
L16	S89°34'00"W	34.75'
L17	S89°34'00"W	81.18'
L18	N45°32'50"W	23.13'
L19	N45°32'50"W	5.00'
L20	N00°17'03"W	15.74'
L21	N00°17'03"W	195.25'
L22	N00°17'03"W	51.55'
L23	N00°17'03"W	36.00'
L24	N44°34'04"E	45.69'
L25	N00°25'45"W	5.00'

LINE TABLE		
Line #	Direction	Length
L26	N00°25'45"W	107.42'
L27	N45°14'59"E	9.68'
L28	N45°14'59"E	24.54'
L29	N00°03'17"W	83.66'
L30	N44°34'01"E	31.92'
L31	N44°34'01"E	9.38'
L32	N89°34'15"E	22.15'
L33	N89°34'15"E	48.55'
L34	S45°25'03"E	26.94'
L35	S45°25'03"E	18.92'
L36	S00°24'07"E	197.61'
L37	S00°24'07"E	15.15'
L38	S00°24'07"E	258.71'
L39	S00°24'07"E	10.56'
L40	S00°24'07"E	35.40'
L41	N00°19'44"W	57.93'
L42	N00°19'44"W	146.10'
L43	N00°19'44"W	215.85'
L44	N00°19'44"W	60.05'
L45	N08°08'20"E	115.55'
L46	N09°57'27"E	113.64'
L47	N09°57'27"E	15.46'
L48	S81°36'21"E	68.53'
L49	N63°51'46"E	148.91'
L50	N09°57'27"E	51.36'
L51	S45°25'59"E	82.43'

Z:\Projects\13178\DWG\13178_WM ESMTS.dwg, WM ESMT 3, 9/17/2015 10:21:14 AM, sbiaszczyk


REVISIONS <table border="1" style="width: 100%; border-collapse: collapse;"> <thead> <tr> <th style="width: 15%;">ITEM</th> <th style="width: 15%;">DATE</th> <th style="width: 15%;">BY</th> </tr> </thead> <tbody> <tr> <td>PER CITY REVIEW</td> <td>9/17/15</td> <td>SRB</td> </tr> <tr><td> </td><td> </td><td> </td></tr> <tr><td> </td><td> </td><td> </td></tr> <tr><td> </td><td> </td><td> </td></tr> <tr><td> </td><td> </td><td> </td></tr> <tr><td> </td><td> </td><td> </td></tr> <tr><td> </td><td> </td><td> </td></tr> <tr><td> </td><td> </td><td> </td></tr> </tbody> </table>	ITEM	DATE	BY	PER CITY REVIEW	9/17/15	SRB																						WATERMAIN EASEMENT BARRINGTON PARK ROCHESTER HILLS MICHIGAN  Civil Engineers & Land Surveyors 55800 GRAND RIVER AVE, SUITE 100 NEW HUDSON, MICHIGAN 48165 P: (248) 437-5099 F: (248) 437-5222 www.zeimctwozniak.com	DATE DESIGNED BY DRAWN BY PTG	SCALE HOR: 1" = FIELD BOOK NO. JOB NO. 13178 SHEET NO. 3/5	© COPYRIGHT 2015
ITEM	DATE	BY																													
PER CITY REVIEW	9/17/15	SRB																													

EXHIBIT "A"

LINE TABLE		
Line #	Direction	Length
L52	N00°42'13"W	241.52'
L53	N00°42'13"W	13.90'
L54	N00°42'13"W	113.46'
L55	N00°42'13"W	74.10'
L56	N00°42'13"W	32.92'
L57	N08°39'24"E	162.99'
L58	N08°39'51"E	112.43'
L59	N08°38'02"E	41.22'
L60	N81°36'21"W	14.50'
L61	N00°15'12"W	41.79'
L62	S00°32'57"E	20.27'
L63	S00°26'00"E	36.11'
L64	S44°27'10"W	1.85'
L65	S89°42'57"W	81.85'
L66	N89°42'57"E	26.81'
L67	N89°42'57"E	57.93'
L68	S89°34'04"W	114.96'
L69	N89°34'15"E	5.00'
L70	S00°25'45"E	18.75'
L71	N44°45'01"W	5.00'
L72	S89°32'28"W	59.00'
L73	N00°25'46"W	78.00'
L74	N89°34'14"E	15.25'
L75	S00°25'45"E	14.25'
L76	N44°34'57"E	21.16'

LINE TABLE		
Line #	Direction	Length
L77	N89°35'00"E	76.16'
L78	N89°35'53"E	77.92'
L79	S89°35'53"W	20.07'
L80	S89°32'55"W	19.85'
L81	N89°32'55"E	79.84'
L82	S22°35'31"E	20.60'
L83	N89°44'48"E	19.49'
L84	N89°44'48"E	19.69'
L85	N89°44'48"E	19.97'
L86	S80°02'33"E	56.13'
L87	S80°02'33"E	15.00'
L88	N89°17'47"E	80.99'
L89	S87°51'37"W	26.18'
L90	N89°17'47"E	17.77'
L91	S89°17'47"W	14.25'
L92	S81°21'45"E	35.00'
L93	N81°41'42"W	14.33'
L95	N89°34'15"E	13.85'
L96	S81°36'21"E	179.29'

Z:\Projects\13178\DWG\13178 WM ESMTS.dwg, WM ESMT 4, 9/17/2015 10:21:19 AM, sbiaszczyk

REVISIONS			WATERMAIN EASEMENT BARRINGTON PARK		DATE	SCALE HOR: 1" =	
ITEM	DATE	BY	ROCHESTER HILLS			FIELD BOOK NO.	
PER CITY REVIEW	9/17/15	SRB	MICHIGAN				
			Z E I M E T W O Z N I A K		DESIGNED BY	JOB NO. 13178	
			& ASSOCIATES			© COPYRIGHT 2015	
			Civil Engineers & Land Surveyors		DRAWN BY		SHEET NO.
			55800 GRAND RIVER AVE. SUITE 100 NEW HUDSON, MICHIGAN 48165 P: (248) 437-5099 F: (248) 437-5222 www.zeimetwozniak.com		PTG		4/5

EXHIBIT "A"

LEGAL DESCRIPTION

A CENTERLINE DESCRIPTION OF A 20 FOOT WIDE WATERMAIN EASEMENT LOCATED IN THE SOUTHWEST 1/4 OF SECTION 26, T. 3 N., R. 11 E., CITY OF ROCHESTER HILLS, OAKLAND COUNTY, MICHIGAN, DESCRIBED AS:

COMMENCING AT THE SOUTH 1/4 CORNER OF SAID SECTION 26 AND ALONG THE SOUTH LINE OF SAID SECTION 26 S. 89°35'00" W. 20.00 FEET; THENCE N. 00°25'00" W. 60.00 FEET TO THE NORTH RIGHT OF WAY LINE OF E. AUBURN ROAD (60 FEET WIDE); THENCE ALONG SAID NORTH RIGHT OF WAY LINE S. 89°35'00" W. 757.75 FEET; THENCE ALONG THE EAST RIGHT OF WAY LINE OF BARCLAY CIRCLE (WIDTH VARIES) N. 00°25'00" W. 71.41 FEET TO THE POINT OF BEGINING OF SAID EASEMENT CENTERLINE; THENCE ALONG SAID EASEMENT CENTERLINE N. 89°42'20" E. 15.46 FEET TO POINT 'A'; THENCE S. 00°42'13" E. 5.00 FEET; THENCE S. 45°15'12" E. 11.25 FEET; THENCE N. 89°44'48" E. 33.91 FEET; THENCE S. 45°15'12" E. 34.06 FEET; THENCE N. 89°44'48" E. 3.10 FEET TO POINT 'B'; THENCE N. 89°44'48" E. 89.39 FEET; THENCE N. 44°31'10" E. 22.54 FEET; THENCE N. 00°19'44" W. 10.94 FEET TO POINT 'C'; THENCE N. 89°27'03" E. 192.79 FEET TO POINT 'D'; THENCE N. 89°27'03" E. 266.06 FEET; THENCE N. 44°27'03" E. 7.09 FEET; THENCE N. 00°25'59" W. 145.33 FEET; THENCE N. 22°35'31" W. 58.17 FEET TO POINT 'E'; THENCE S. 67°24'29" W. 81.98 FEET; THENCE S. 89°34'00" W. 34.75 FEET TO POINT 'F'; THENCE S. 89°34'00" W. 81.18 FEET; THENCE N. 45°32'50" W. 23.13 FEET TO POINT 'G'; THENCE N. 45°32'50" W. 5.00 FEET; THENCE N. 00°17'03" W. 15.74 FEET TO POINT 'H'; THENCE N. 00°17'03" W. 195.25 FEET TO POINT 'I'; THENCE N. 00°17'03" W. 51.55 FEET TO POINT 'J'; THENCE N. 00°17'03" W. 36.00 FEET; THENCE N. 44°34'04" E. 45.69 FEET; THENCE N. 00°25'45" W. 5.00 FEET TO POINT 'K'; THENCE N. 00°25'45" W. 107.42 FEET; THENCE N. 45°14'59" E. 9.68 FEET TO POINT 'L'; THENCE N. 45°14'59" E. 24.54 FEET; THENCE N. 00°03'17" W. 83.66 FEET; THENCE N. 44°34'01" E. 31.92 FEET TO POINT 'M'; THENCE N. 44°34'01" E. 9.38 FEET; THENCE N. 89°34'15" E. 22.15 FEET TO POINT 'N'; THENCE N. 89°34'15" E. 48.55 FEET TO POINT 'O'; THENCE N. 89°34'15" E. 13.85 FEET; THENCE S. 45°25'03" E. 26.94 FEET TO POINT 'P'; THENCE S. 45°25'03" E. 18.92 FEET; THENCE S. 00°24'07" E. 197.61 FEET TO POINT 'Q'; THENCE S. 00°24'07" E. 15.15 FEET TO POINT 'R'; THENCE S. 00°24'07" E. 258.71 FEET TO POINT 'S'; THENCE S. 00°24'07" E. 10.56 FEET TO POINT 'T'; THENCE S. 00°24'07" E. 35.40 FEET; THENCE S. 22°35'31" E. 20.60 FEET TO SAID POINT 'E'; THENCE FROM SAID POINT 'C' N. 00°19'44" W. 57.93 FEET TO POINT 'U'; THENCE N. 00°19'44" W. 146.10 FEET TO POINT 'V'; THENCE N. 00°19'44" W. 215.85 FEET TO POINT 'W'; THENCE N. 00°19'44" W. 60.05 FEET; THENCE N. 08°08'20" E. 115.55 FEET TO POINT 'X'; THENCE N. 09°57'27" E. 113.64 FEET TO POINT 'Y'; THENCE N. 09°57'27" E. 15.46 FEET TO POINT 'Z'; THENCE S. 81°36'21" E. 68.53 FEET; THENCE N. 63°51'46" E. 148.91 FEET; THENCE S. 45°25'59" E. 82.43 FEET TO SAID POINT 'M'; THENCE FROM SAID POINT 'A' N. 00°42'13" W. 241.52 FEET TO POINT 'AA'; THENCE N. 00°42'13" W. 13.90 FEET TO POINT 'BB'; THENCE N. 00°42'13" W. 113.46 FEET TO POINT 'CC'; THENCE N. 00°42'13" W. 74.10 FEET TO POINT 'DD'; THENCE N. 00°42'13" W. 32.92 FEET; THENCE N. 08°39'24" E. 162.99 FEET TO POINT 'EE'; THENCE N. 08°39'51" E. 112.43 FEET TO POINT 'FF'; THENCE N. 08°38'02" E. 41.22 FEET TO POINT 'GG'; THENCE S. 81°36'21" E. 179.29 FEET TO SAID POINT 'Z'; THENCE FROM SAID POINT 'GG' N. 81°36'21" W. 14.50 FEET TO A POINT OF ENDING; THENCE FROM SAID POINT 'B' N. 00°15'12" W. 41.79 FEET TO A POINT OF ENDING; THENCE FROM SAID POINT 'D' S. 00°32'57" E. 20.27 FEET TO A POINT OF ENDING; THENCE FROM SAID POINT 'F' S. 00°26'00" E. 36.11 FEET TO A POINT OF ENDING; THENCE FROM SAID POINT 'G' S. 44°27'10" W. 1.85 FEET; THENCE S. 89°42'57" W. 81.85 FEET TO A POINT OF ENDING; THENCE FROM SAID POINT 'H' N. 89°42'57" E. 26.81 FEET TO A POINT OF ENDING; THENCE FROM SAID POINT 'I' N. 89°42'57" E. 57.93 FEET TO A POINT OF ENDING; THENCE FROM SAID POINT 'J' S. 89°34'04" W. 114.96 FEET TO A POINT OF ENDING; THENCE FROM SAID POINT 'K' N. 89°34'15" E. 5.00 FEET; THENCE S. 00°25'45" E. 18.75 FEET TO A POINT OF ENDING; THENCE FROM SAID POINT 'L' N. 44°45'01" W. 5.00 FEET; THENCE S. 89°32'28" W. 59.00 FEET TO A POINT OF ENDING; THENCE FROM SAID POINT 'N' N. 00°25'46" W. 78.00 FEET; THENCE N. 89°34'14" E. 15.25 FEET TO A POINT OF ENDING; THENCE FROM SAID POINT 'O' S. 00°25'45" E. 14.25 FEET TO A POINT OF ENDING; THENCE FROM SAID POINT 'P' N. 44°34'57" E. 21.16 FEET; THENCE N. 89°35'00" E. 76.16 FEET TO A POINT OF ENDING; THENCE FROM SAID POINT 'Q' N. 89°35'53" E. 77.92 FEET TO A POINT OF ENDING; THENCE FROM SAID POINT 'R' S. 89°35'53" W. 20.07 FEET TO A POINT OF ENDING; THENCE FROM SAID POINT 'S' S. 89°32'55" W. 19.85 FEET TO A POINT OF ENDING; THENCE FROM SAID POINT 'T' N. 89°32'55" E. 79.84 FEET TO A POINT OF ENDING; THENCE FROM SAID POINT 'U' N. 89°44'48" E. 19.49 FEET TO A POINT OF ENDING; THENCE FROM SAID POINT 'V' N. 89°44'48" E. 19.69 FEET TO A POINT OF ENDING; THENCE FROM SAID POINT 'X' S. 80°02'33" E. 56.13 FEET TO A POINT OF ENDING; THENCE FROM SAID POINT 'Y' S. 80°02'33" E. 15.00 FEET TO A POINT OF ENDING; THENCE FROM SAID POINT 'AA' N. 89°17'47" E. 80.99 FEET TO A POINT OF ENDING; THENCE FROM SAID POINT 'BB' S. 87°51'37" W. 26.18 FEET TO A POINT OF ENDING; THENCE FROM SAID POINT 'CC' N. 89°17'47" E. 17.77 FEET TO A POINT OF ENDING; THENCE FROM SAID POINT 'DD' S. 89°17'47" W. 14.25 FEET TO A POINT OF ENDING; THENCE FROM SAID POINT 'EE' S. 81°21'45" E. 35.00 FEET TO A POINT OF ENDING; THENCE FROM SAID POINT 'FF' N. 81°41'42" W. 14.33 FEET TO THE POINT OF ENDING OF SAID EASEMENT CENTERLINE.

Z:\Projects\13178\DWG\13178_WM_ESMTS.dwg, WM ESMT 5, 9/17/2015 10:21:23 AM, sblaszczyk

REVISIONS			WATERMAIN EASEMENT BARRINGTON PARK		DATE	SCALE HOR: 1" =	
ITEM	DATE	BY	ROCHESTER HILLS			FIELD BOOK NO.	
PER CITY REVIEW	9/17/15	SRB	MICHIGAN				
			Z EIMET W OZNIAK		DESIGNED BY	JOB NO. 13178	
			Civil Engineers & Land Surveyors				© COPYRIGHT 2015
			55800 GRAND RIVER AVE. SUITE 100 NEW HUDSON, MICHIGAN 48165 P: (248) 437-5099 F: (248) 437-5222 www.zeimetwozniak.com		DRAWN BY PTG	SHEET NO. 5/5	