

PARK ELEMENTS 1

Ideas | Concepts

7. Complete Boardwalk Trails

- From Upper Woodlands To 10' Trail
 - Grade For ADA Access To 10' Trail
- 7a. From Boardwalk To Utility Easement

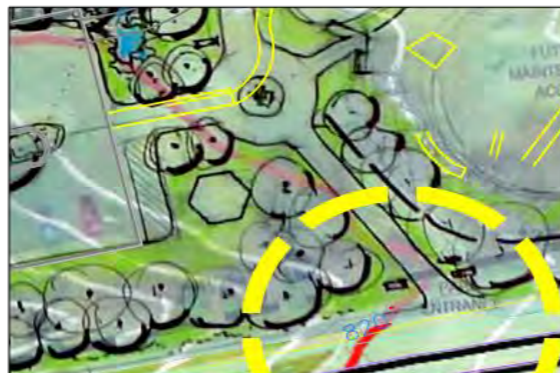


8. Extend Gravel Hike & Bike Trail From 8' Path Through Sanitary Easement To Boardwalk (Clinton Valley Trail Standard)



9. Complete Pedestrian / Bicycle Secondary Entrance / Trail

10. Create "Control Point" Roundabout, Connecting Secondary Entrance W/ Parking Lot, Play Area & 12' Trail Spine



Additional Phase 1 Programming:

- Bike Racks
- Sculpture in Hamlin Road Median
- Seating
- Waste Receptacles (Human & Pets)

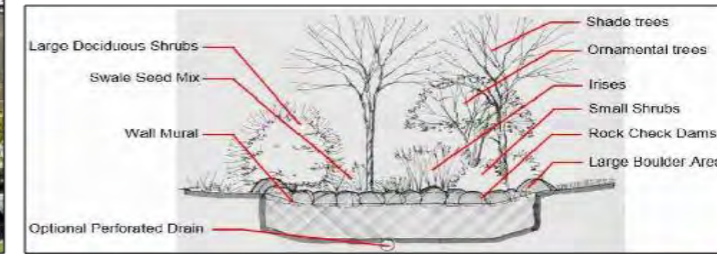
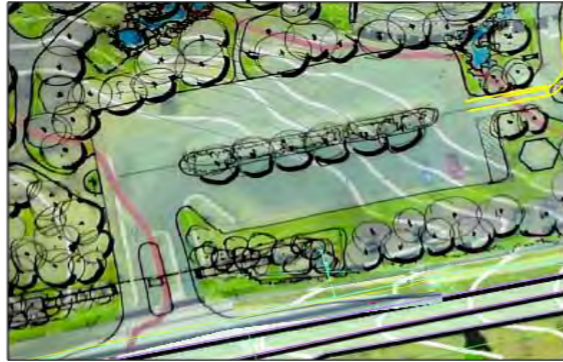


PARK ELEMENTS 1

Ideas | Concepts

RIVERBEND PARK | PARK ELEMENTS 1 | IDEAS & CONCEPTS

1. Finish Parking Lot & Bio-Swale



Sample of Plantings for Bio-Swale:

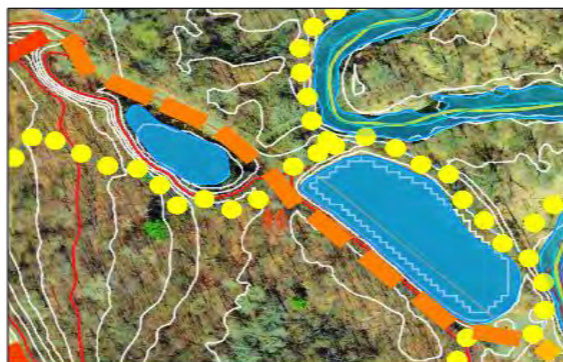
- Grey Dogwood
- Blue Iris
- Lipstick Strawberry
- Giant Coneflower



- Add Primary Signage With Map.
- Add Secondary Signage W/ Park Rules
- Wayfinding & Trail Markers:
 - Add Color Coded Wayfinding Markers For Trails
 - Signage W/ Rules For Hike & Bike Trails
- Add PVC Boundary Markers With Rules Along Park Boundary



- 8' Trail:
 - Remain as Existing Gravel Aggregate?
 - Pave with Asphalt?



RIVERBEND PARK

STRATEGIC FRAMEWORK PLAN



PARK ELEMENTS 2A

RIVERBEND PARK



RIVERBEND PARK

PARK ELEMENTS 2a | IDEAS & CONCEPTS

1. Major Grading for Dry Detention Basin
2. Stockpile Material Spoils for Landscape Forms
3. Create Land Forms
4. Create Water Features
 - 4a. Water Wall
 - 4b. Cascading "Waterfall"
5. Create Terrace Seating around Dry Basin
6. Grade Pads for Senior Play Area
7. Grade Pads for Kids Play Area
8. Create Trail & Pad for Kayak Landing on Clinton River

Additional Programming

- Additional Seating Elements Throughout the Park
- Landscaping: Native plantings & Seeding
- Begin Riverbank Stabilization Treatment
- Create Staging Areas at Specific Locations for Sculptures / Art

Previous Proposals for Stormwater Management at Riverbend Park

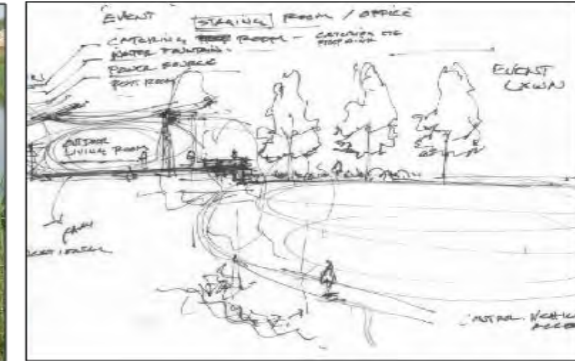
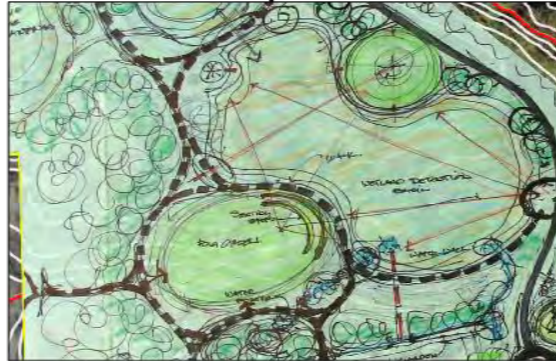


PARK ELEMENTS 2A

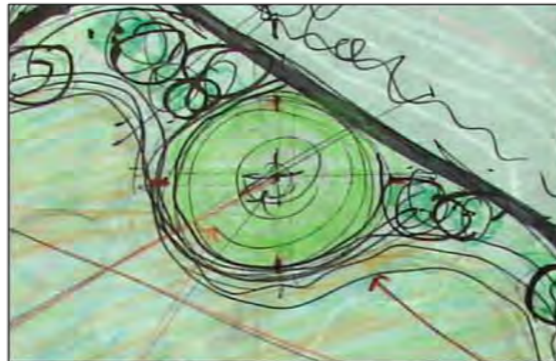
Ideas | Concepts

RIVERBEND PARK | PARK ELEMENTS 2a | IDEAS & CONCEPTS

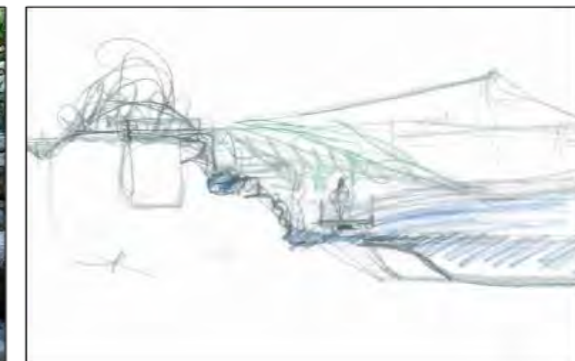
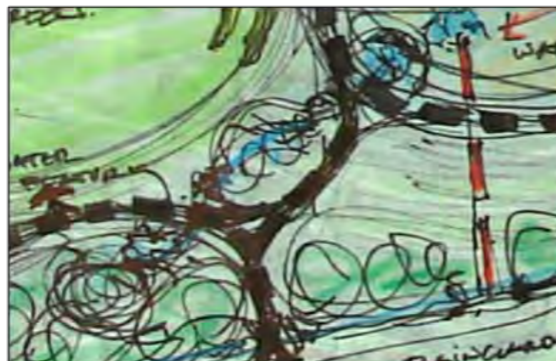
- 1. Major Grading For Dry Detention Basin
- 2. Stockpile Material Spoils For Landscape Forms
- 3. Create Land Forms



- 4. Create Water Features
 - 4a. Water Wall



- 4. Create Water Features
 - 4b. Cascading "Waterfall"



RIVERBEND PARK

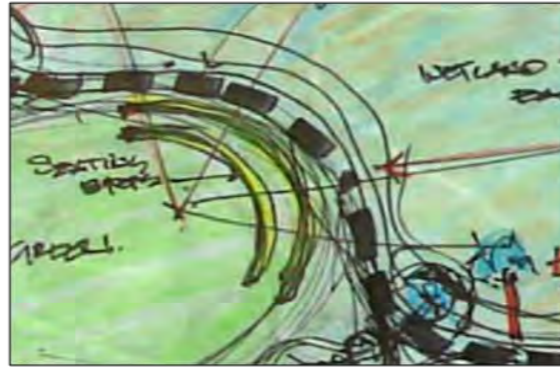
STRATEGIC FRAMEWORK PLAN



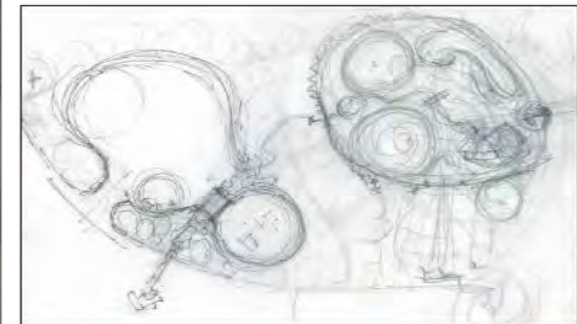
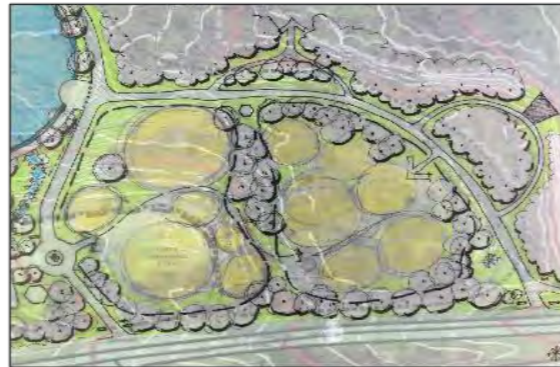
PARK ELEMENTS 2A

Ideas | Concepts

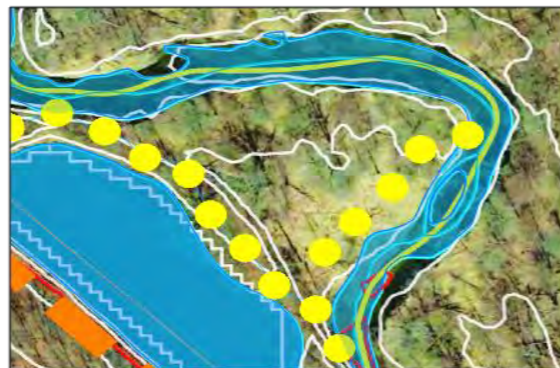
5. Create Terrace Seating Around Pond



6. Grade Pads For Senior Play Area
7. Grade Pads For Kids Play Area



8. Create Trail & Pad For Kayak Landing On Clinton River



Additional Phase 2 Landscaping:

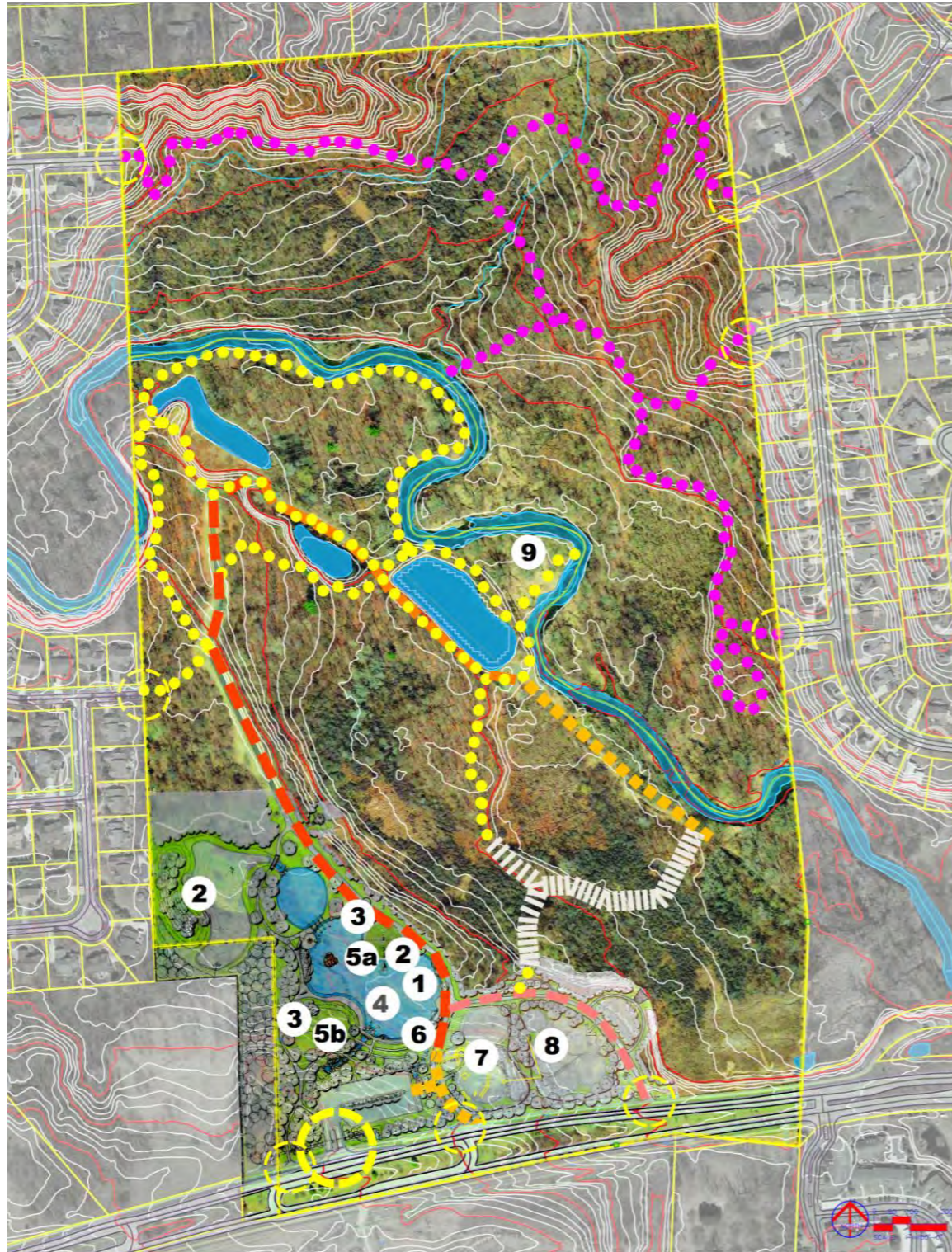
Planting & Seeding:

- a. River Birch
- b. Pin Oak
- c. Black Tupelo
- d. Purple Coneflower
- e. Ninebark



PARK ELEMENTS 2B

RIVERBEND PARK



RIVERBEND PARK

PARK ELEMENTS 2b | IDEAS & CONCEPTS

1. Major Grading for Pond Basin & Wet Detention Basin
2. Stockpile Material Spoils for Landscape Forms
3. Create Land Forms
4. Lake Development
5. Create Water Features
 - 5a. Water Wall
 - 5b. Cascading "Waterfall"
6. Create Terrace Seating around Dry Basin
7. Grade Pads for Senior Play Area
8. Grade Pads for Kids Play Area
9. Create Trail & Pad for Kayak Landing on Clinton River

Additional Programming

- Additional Seating Elements Throughout the Park
- Landscaping: Native Plantings & Seeding
- Begin Riverbank Stabilization Treatment
- Create Staging Areas at Specific Locations for Sculptures / Art

2012 Lawrence Tech University Land Studio Proposals

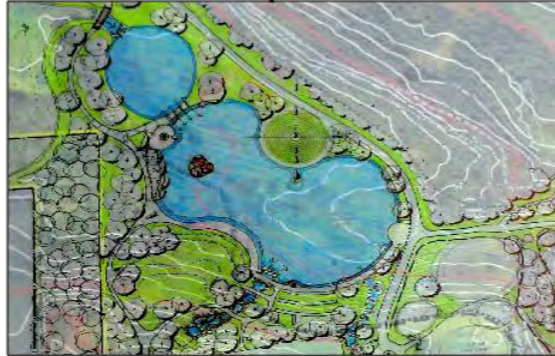


PARK ELEMENTS 2B

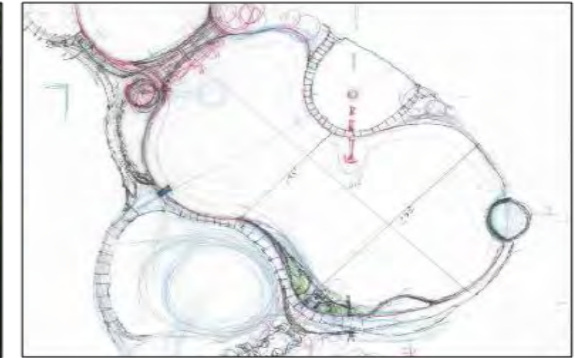
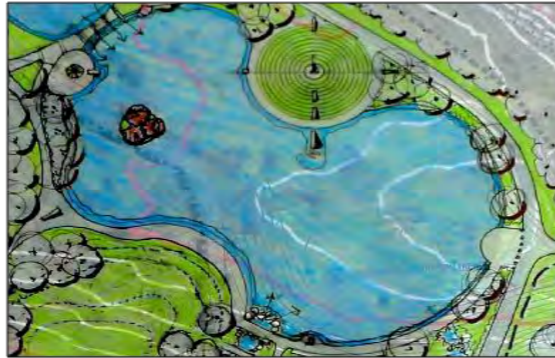
Ideas | Concepts

RIVERBEND PARK | PARK ELEMENTS 2b | IDEAS & CONCEPTS

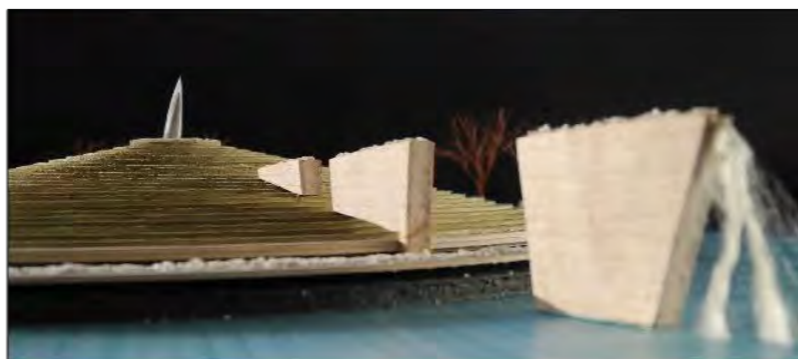
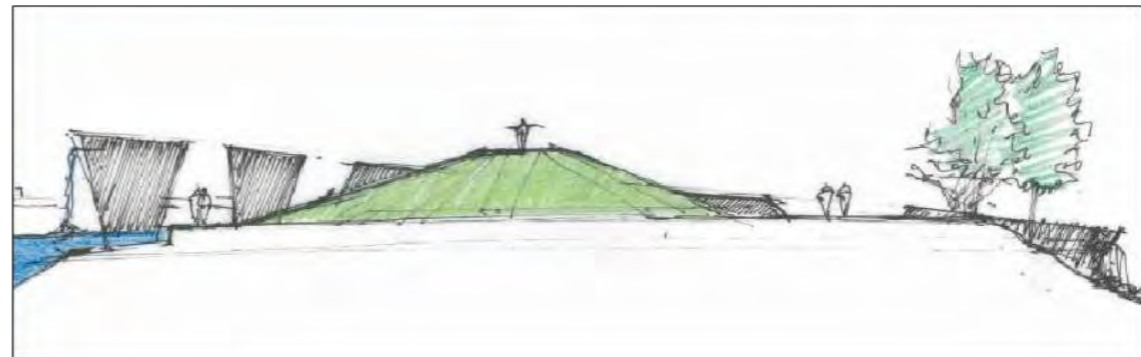
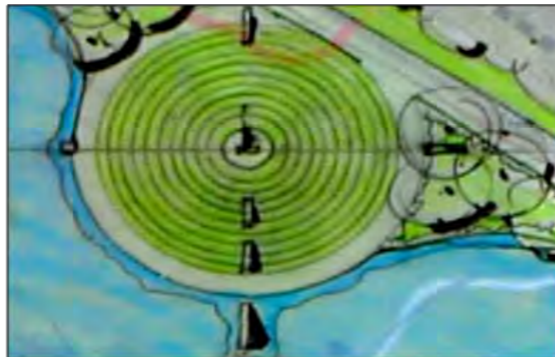
- 1. Major Grading For Wet Detention Basin
- 2. Stockpile Material Spoils For Landscape Forms
- 3. Create Land Forms



- 4. Lake Development



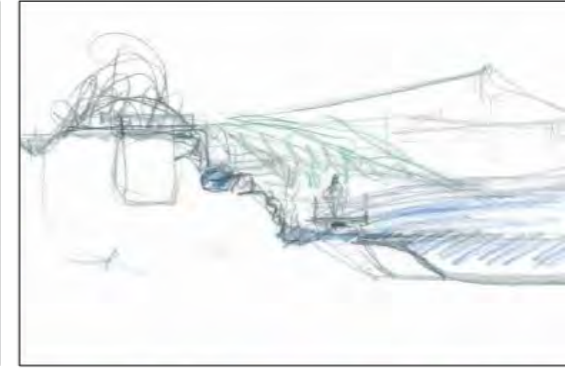
- 5. Create Water Features
 - 5a. Water Wall



PARK ELEMENTS 2B

Ideas | Concepts

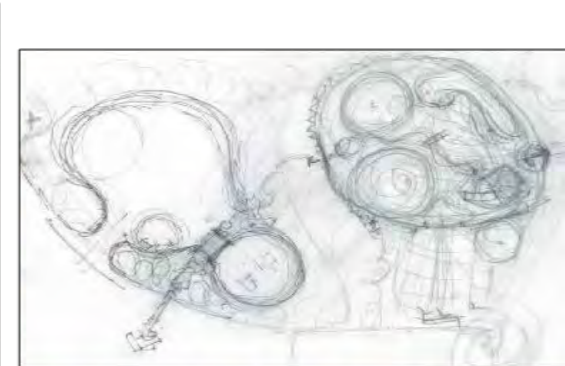
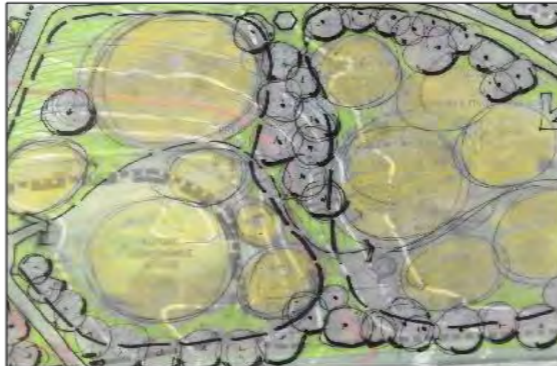
- 5. Create Water Features
 - 5b. Cascading "Waterfall"



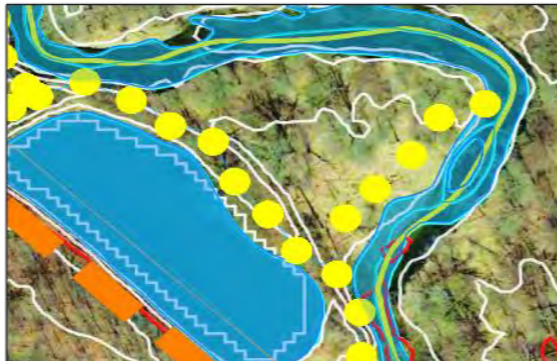
- 6. Create Terrace Seating Around Pond



- 7. Grade Pads For Senior Play Area
- 8. Grade Pads For Kids Play Area



- 9. Create Trail & Pad For Kayak Landing On Clinton River



PARK ELEMENTS 3

Ideas | Concepts

RIVERBEND PARK | PARK ELEMENTS 3 | IDEAS & CONCEPTS

1. Add Senior Play Elements -

- Bocce Ball
- Exercise Stations
- Gathering/ Observation Area/ Seating/ Shelter



2. Add Kids Play Elements -

- Natural Playscape
- Sensory Garden
- Tree House
- Special Needs Play Area
- Spiral Mound



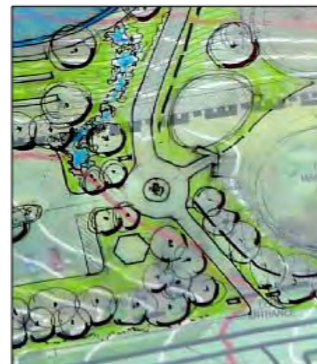
3. Create Trail Connection Between Senior Play Area and Kids Play Area

4. Add Pavilion / Shelter On North End



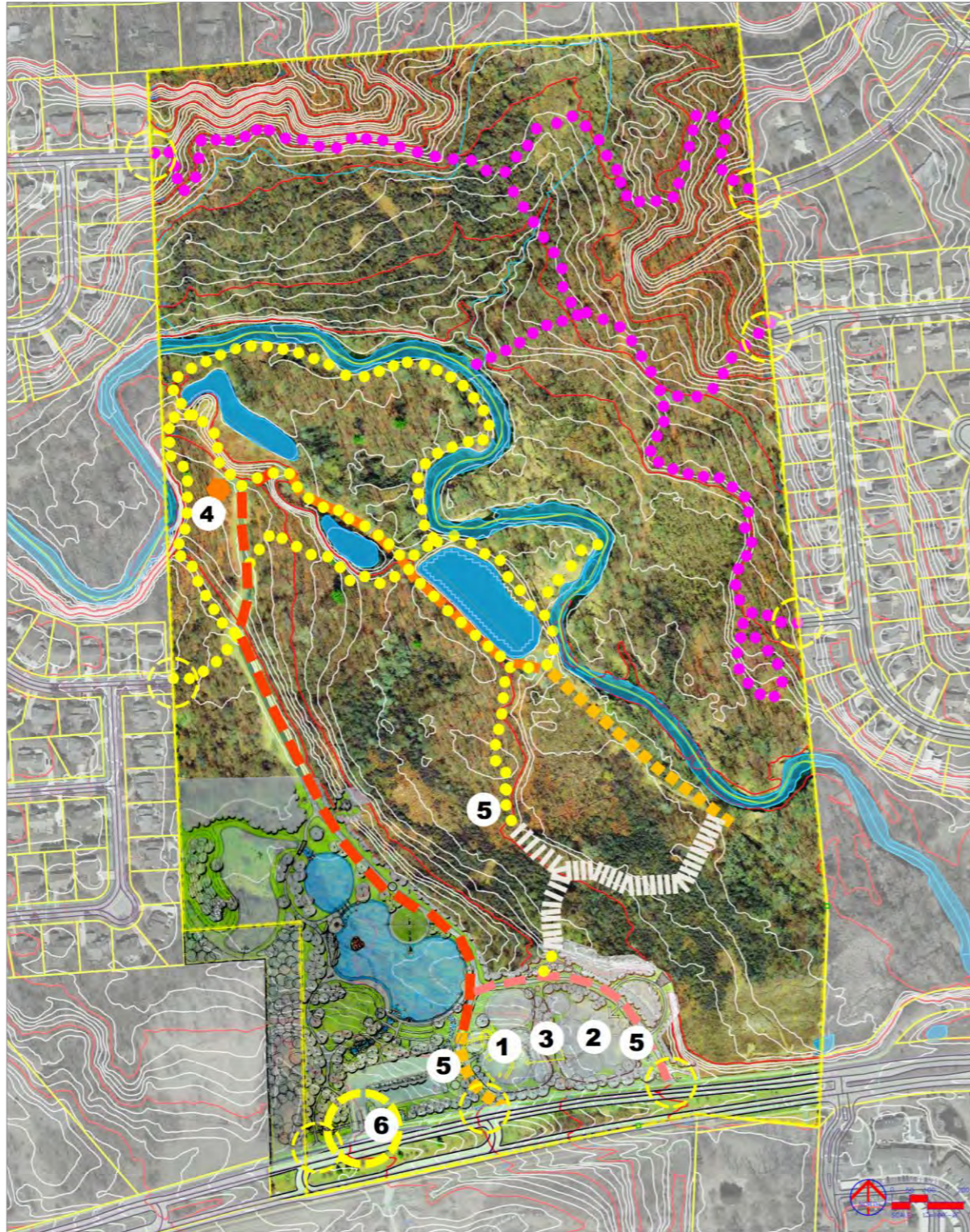
5. Add Art & Sculptures

- Control Point / Roundabout
- Secondary Entrance On Hamlin
- Point Of Interest From Bird's Nest
- *Integrate Wi-Fi Within Sculpture



PARK ELEMENTS 3

RIVERBEND PARK



RIVERBEND PARK

PARK ELEMENTS 3 | IDEAS & CONCEPTS

1. Add Senior Play Elements:
 - Bocce Ball
 - Exercise Stations
 - Gathering / Observation Area / Seating / Shelter
 2. Add Kids Play Elements:
 - Natural Playscape
 - Sensory Garden
 - Tree House
 - Special Needs Play Area
 - Spiral Mound
 3. Create Trail Connection from Adult to Kids Area
 4. Add Pavilion / Shelter on North End
 5. Add Art & Sculptures
 6. Create "New" Park Main Entrance
- Additional Programming**
- Add Structure for Maintenance with Restroom in Zone 1
 - Expand Landscape Natural / Functional Plantings and Seeding
 - Remediation of Invasive Plant Species from Wetland and Stormwater Detention Basins

PARK ELEMENTS 3

Ideas | Concepts

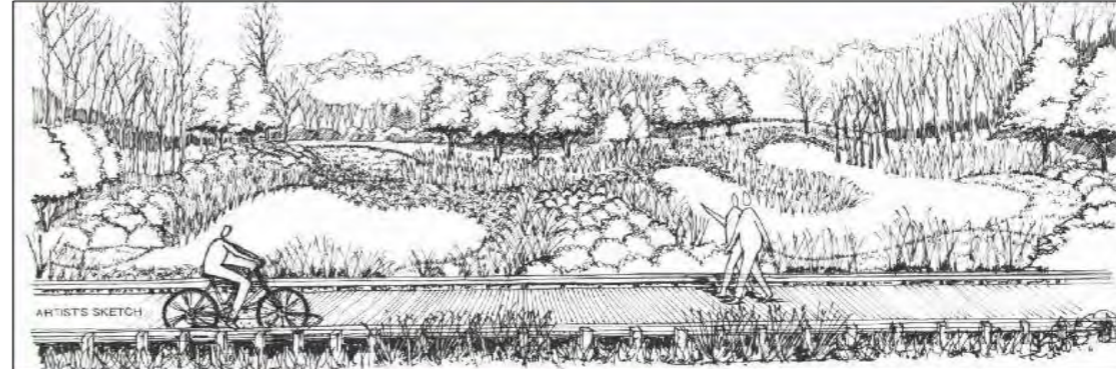
6. Create "New" Park Main Entrance



- Remediation Of Invasive Plant Species From Wetlands And Stormwater Detention Basins



- Expand Landscape Plantings
- Detailed Areas
- Native Plants And Others With Specific Functions



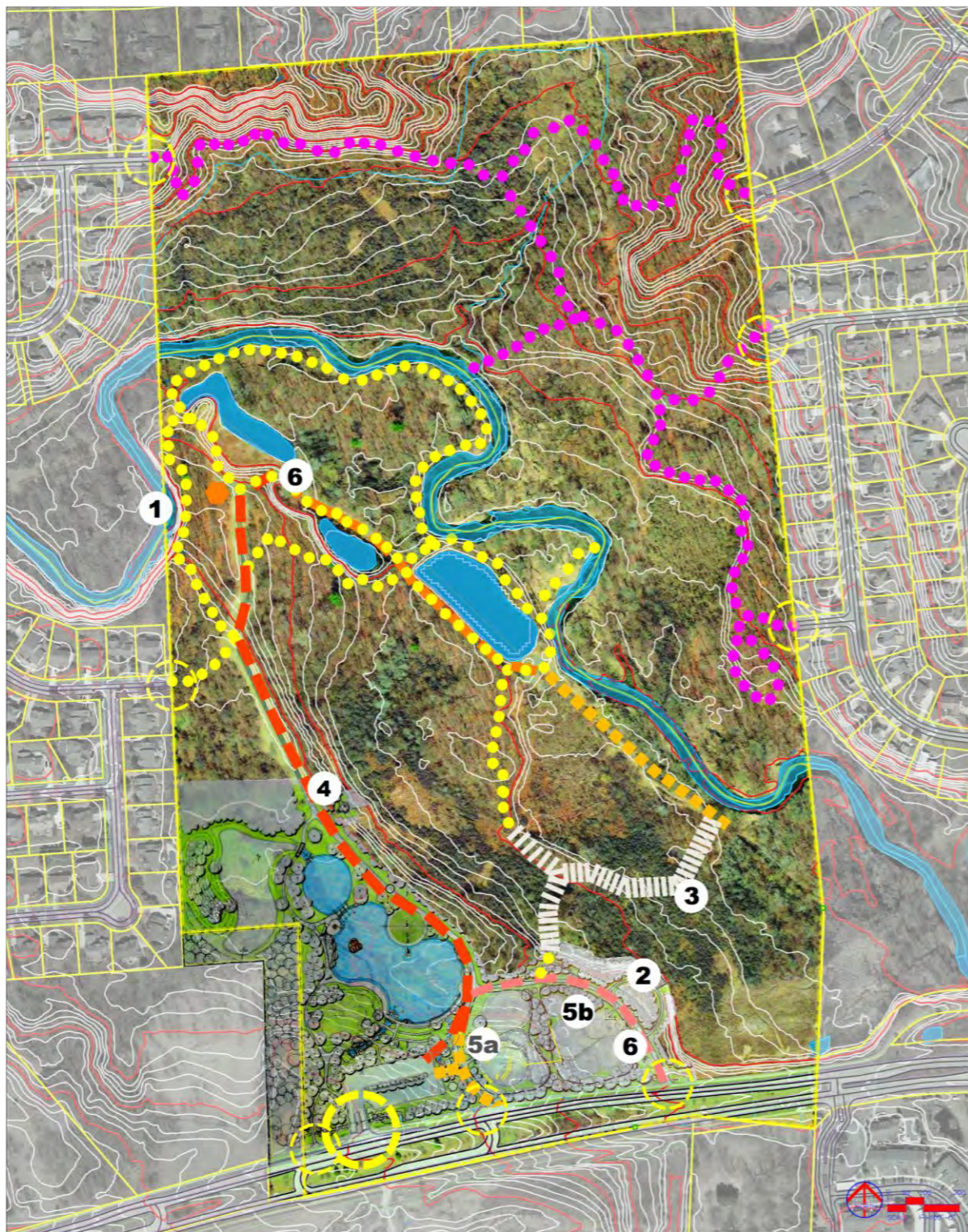
Additional Landscape Plantings:

- Swamp White Oak
- Thornless Honeylocust
- Red Twig Dogwood
- Big Bluestem
- Prairie Dropseed



PARK ELEMENTS 4

RIVERBEND PARK



RIVERBEND PARK

PARK ELEMENTS 4 | IDEAS & CONCEPTS

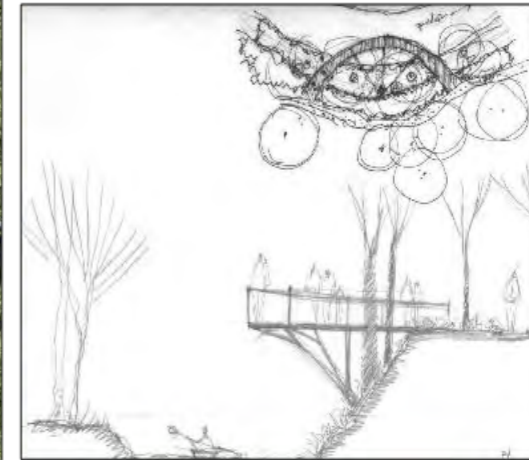
1. Add Crescent Overlook of River
2. “The Point” Observation Point
3. Wetland Observation Tower
4. “Bird’s Nest” Elevated Viewing Platform
5. Shelter Structure
 - 5a. Adult Area
 - 5b. Kids Area
6. Add Living Art & Architecture

PARK ELEMENTS 4

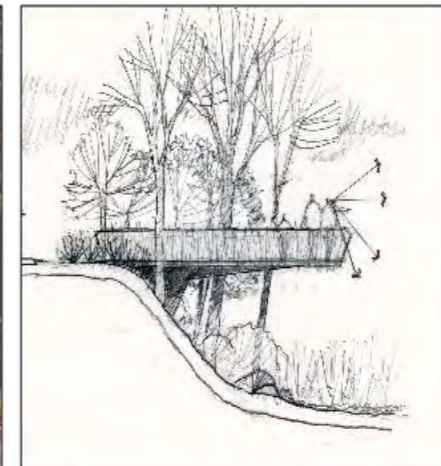
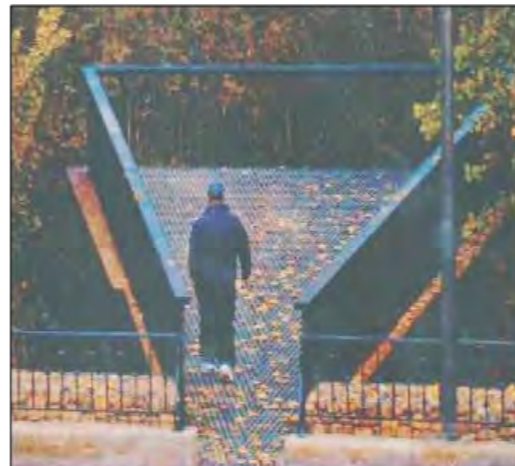
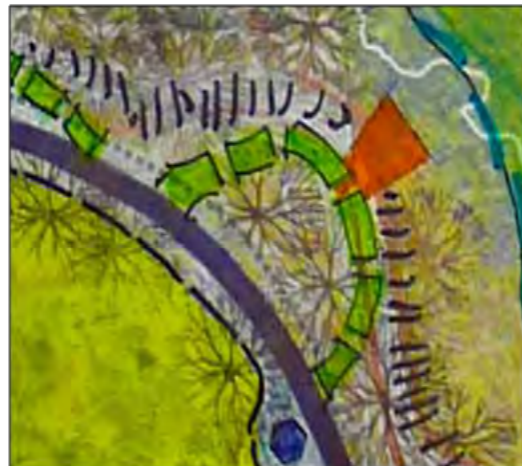
Ideas | Concepts

RIVERBEND PARK | PARK ELEMENTS 4 | IDEAS & CONCEPTS

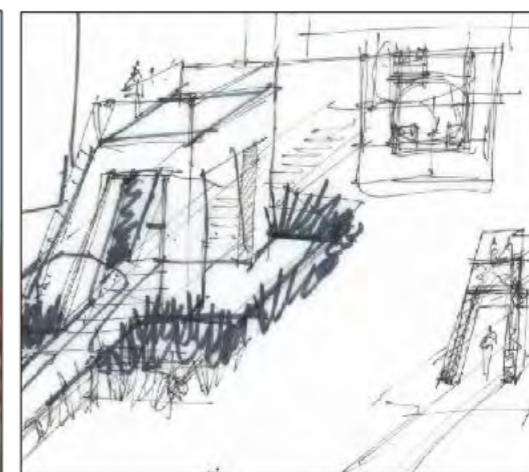
1. Add Crescent Overlook Of River



2. "The Point" Observation Deck



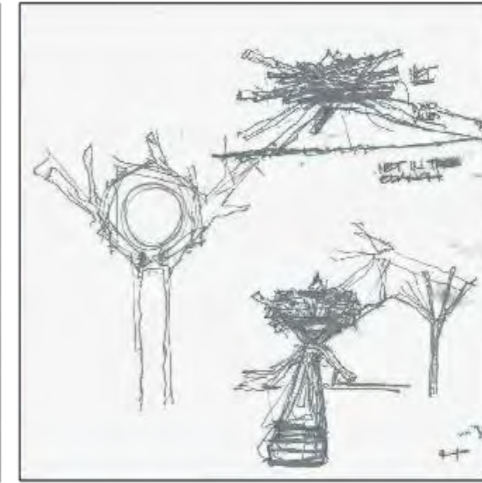
3. Wetland Observation Tower



PARK ELEMENTS 4

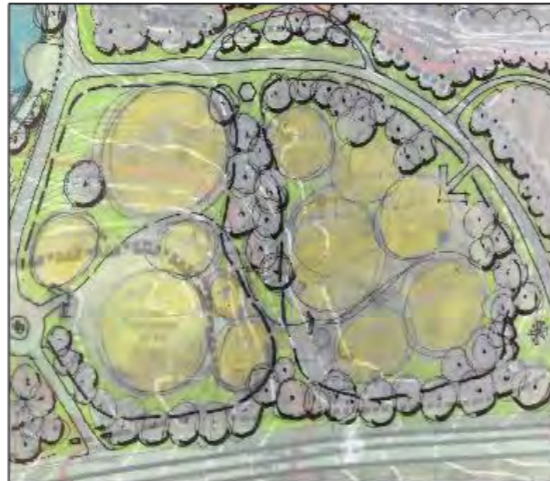
Ideas | Concepts

4. "Bird's Nest" Elevated Viewing Platform



5. Shelter Structure

- a. Adult Area
- b. Kids Area

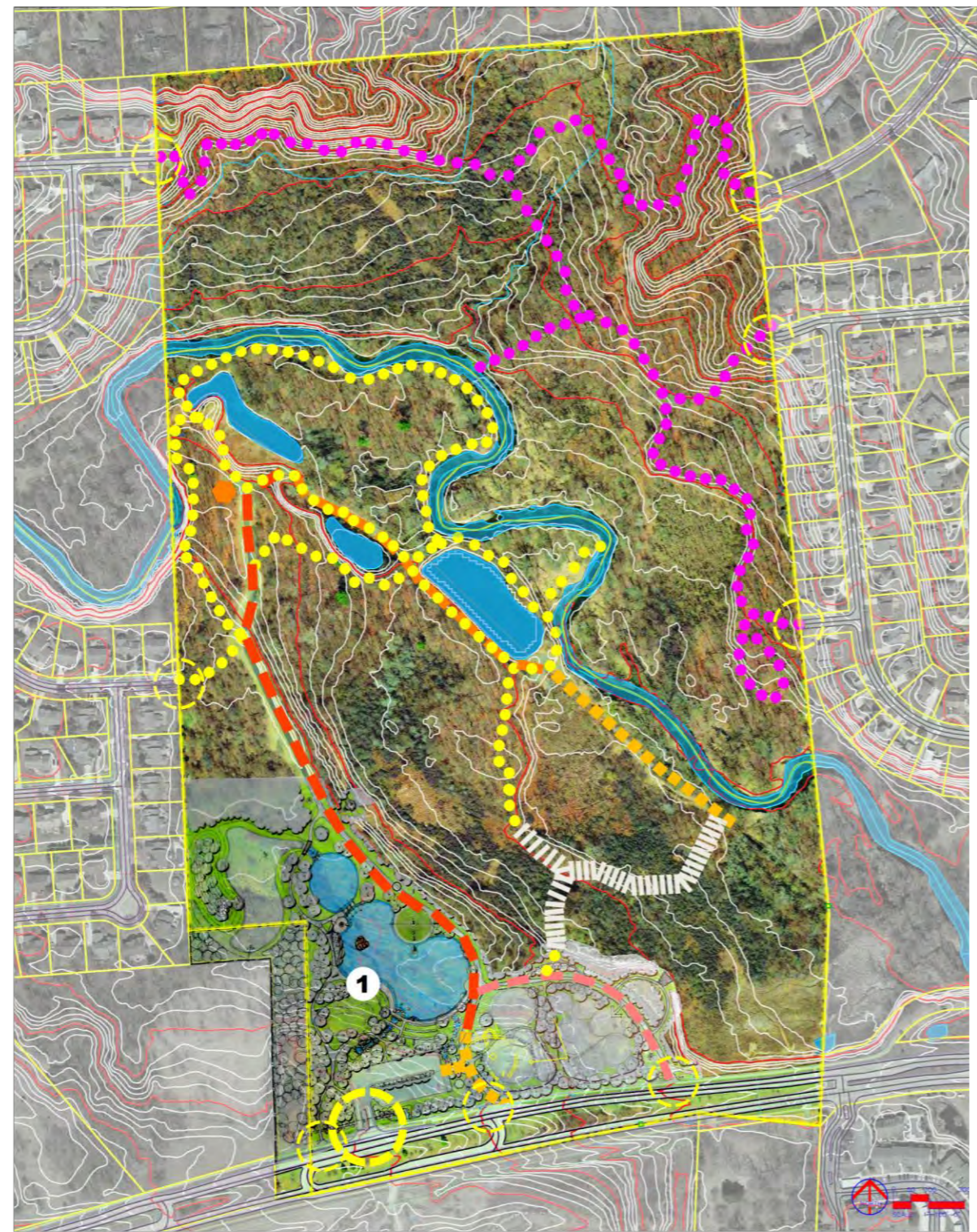


6. Add Living Art & Architecture





PARK ELEMENTS 5: Plan Ideas | Concepts



RIVERBEND PARK PARK ELEMENTS 5 | IDEAS & CONCEPTS

1. Community Pavilion Options: Open Pavilion

- Open Air
- Simple Structure
- Fire Pit
- Photovoltaic Panels on Roof?
- Green Roof?

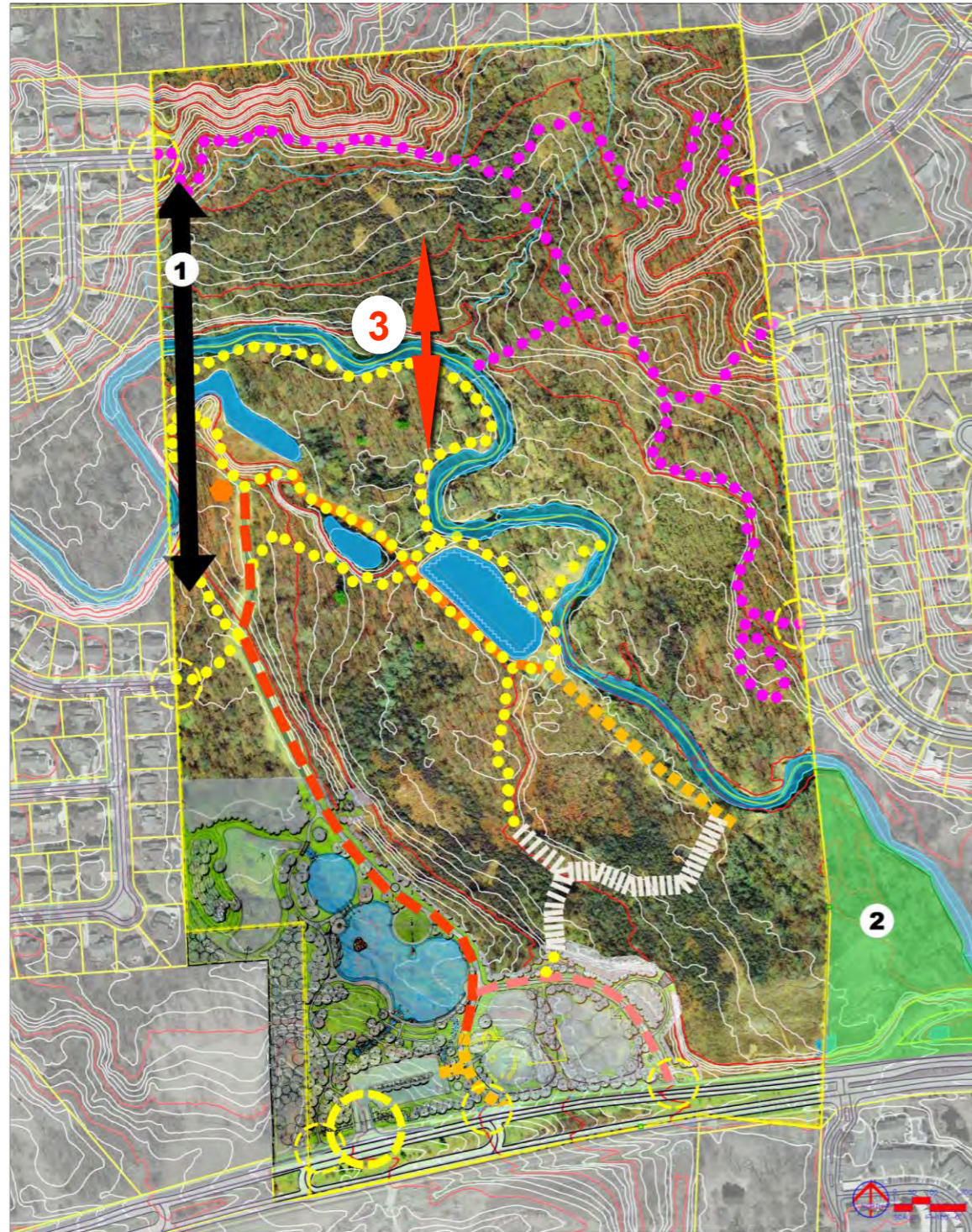
Complex Pavilion

- Enclosed
- Multi-Level
- Flexible Space for Programming
- Options
- Fire Pit
- Photovoltaic Panels on Roof?
- Green Roof?
- Weather Station & Monitoring Equipment



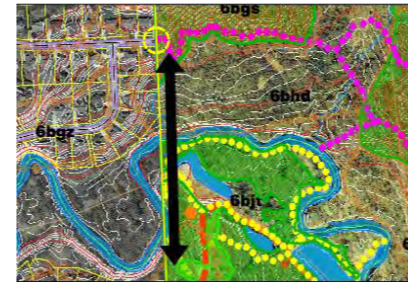
2012 Lawrence Tech University Land Studio Proposals





RIVERBEND PARK

PARK ELEMENTS 6 | IDEAS & CONCEPTS



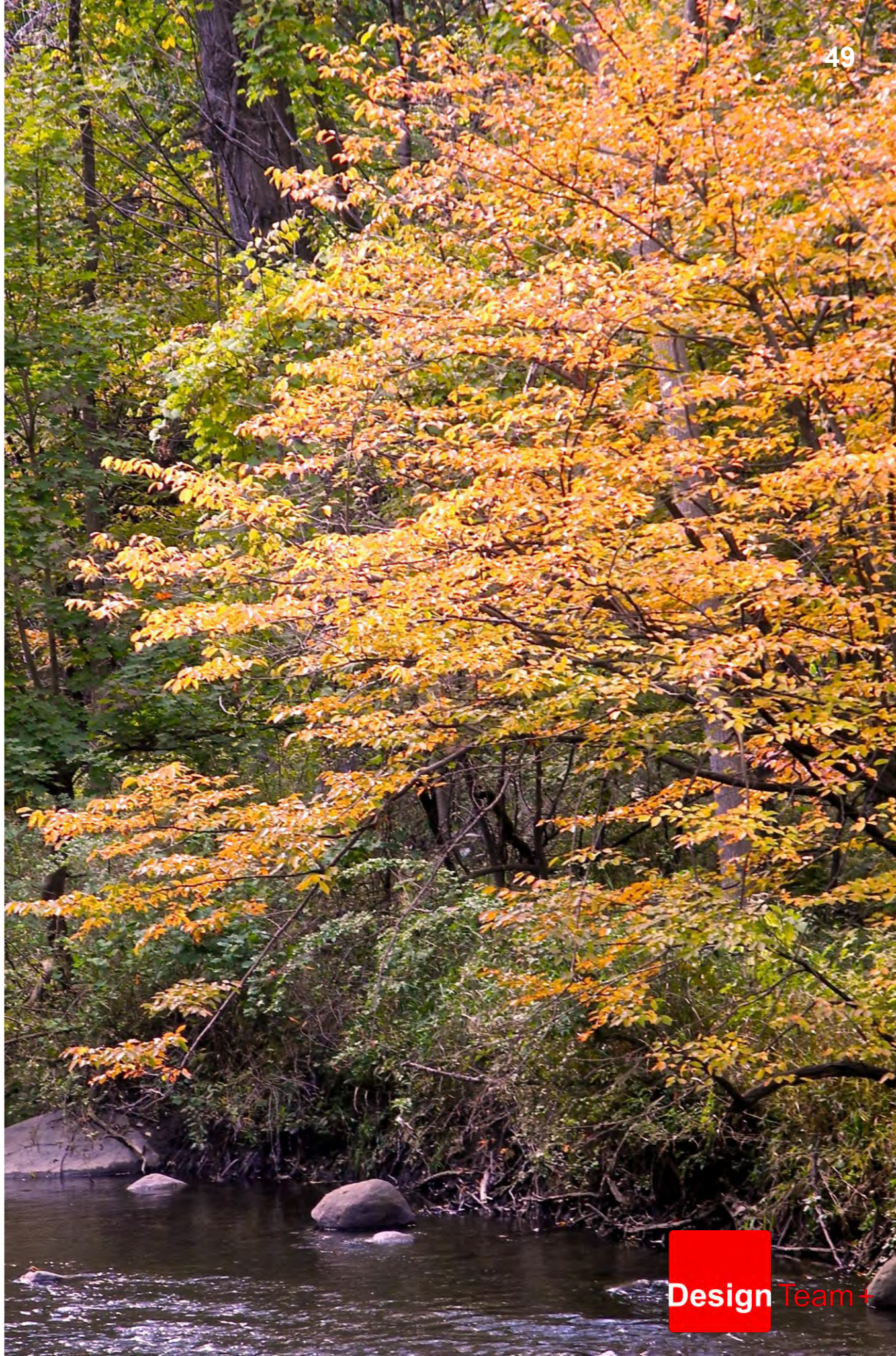
1. Prefabricated Steel Truss Bridge from South Park Property to North Open Space Property to link both sides of the Park.
 - Requires +/- 600 to 800 linear feet to connect neighborhoods to the Park



2. Secure Additional Green Space to Complete the Aggregate Hike & Bike Trail Along Sanitary Easement (Clinton Trail Standard)
 - Continue Trail Along the Old Hamlin Road R.O.W. Connecting to the East Park Entrance

3. Alternative suggestion by voters was to include a rope bridge

FINDINGS



PUBLIC ENGAGEMENT

Park Plan Presentation Review



Steering Committee, members of the Planning Commission and City Departments viewed the presentation and voted on the Park Elements.

RIVERBEND PARK PHASE 2b

1. Major Grading For Pond Basin & "Wet" Detention Basin ●●●
2. Stockpile Material Spoils For Landscape Forms
3. Create Land Forms
4. Lake Development ●●●●
5. Create Water Features: ●●●●●●●●
 - 5a. Water Wall
 - 5b. Cascading "Waterfall"
6. Create Terrace Seating Around Dry Basin ●
7. Grade Pads For Senior Play Area
8. Grade Pads For Kids Play Area
9. Create Trail & Pad For Kayak Landing On Clinton River ●●

Additional Programming

- Additional Seating Elements Throughout The Park ●●
- Landscaping: Planting And Seeding ●
- Begin Riverbank Stabilization Treatment ●●
- Create Staging Areas At Specific Locations For Sculptures / Art ●●●

RIVERBEND PARK PHASE 4

1. Add Crescent Overlook Of River ●●●●●●●●●●
2. "The Point" Observation Deck ●
3. Wetland Observation Tower ●●●●●●●●●●
4. "Bird's Nest" Elevated Viewing Platform ●●●●●●●●●●
5. Shelter Structure ●●
 - 5a. Adult Area ●
 - 5b. Kids Area
6. Add Living Art & Architecture ●●●●

SHARING THE VISION

Presentation of the proposed park elements with special attention to the Universal Design Area for Kids and Park Tour was conducted for Lt. Governor Brian Calley and guests.



Lt. Governor Brian Calley and Mayor Bryan Barnett



RIVERBEND PARK | IDEAS & CONCEPTS



Park Design Presentation by Ralph Núñez

DONOR

Steve and Vivian Stolaruk Foundation

CITY OF ROCHESTER HILLS

Mayor Bryan Barnett

Maria Willett - Chief Assistant to the Mayor

PLANNING DEPARTMENT

Ed Anzek, AICP Director of Planning and Development

Sara Roediger, ACIP Manager of Planning

PARK & RECREATION DEPARTMENT

Mike Hartner - Director of Park and Recreation

Alan Buckenmeyer, Lance Devoe

ENGINEERING DEPARTMENT

Allen Schneck, P.E. Department of Public Services Director

MANAGEMENT INFORMATION SYSTEMS

Bob Grace - Director

STEERING COMMITTEE

Sue Barnes, Michael Behrmann, Kristin Bull, Gerald Carvey,
Renee Cortright, Michelle Gage, Ron Jewell, Tamanna Lam,
Amy Mangus, Steph Morita, Bret Rasegan, Tami Salesbury,
Carrie Schochet, Anne Vaara

EDUCATION COMMITTEE

Sandra Turner, Laura Brown, Brian Peterson, Tracy Anderson

LAWRENCE TECHNOLOGICAL UNIVERSITY

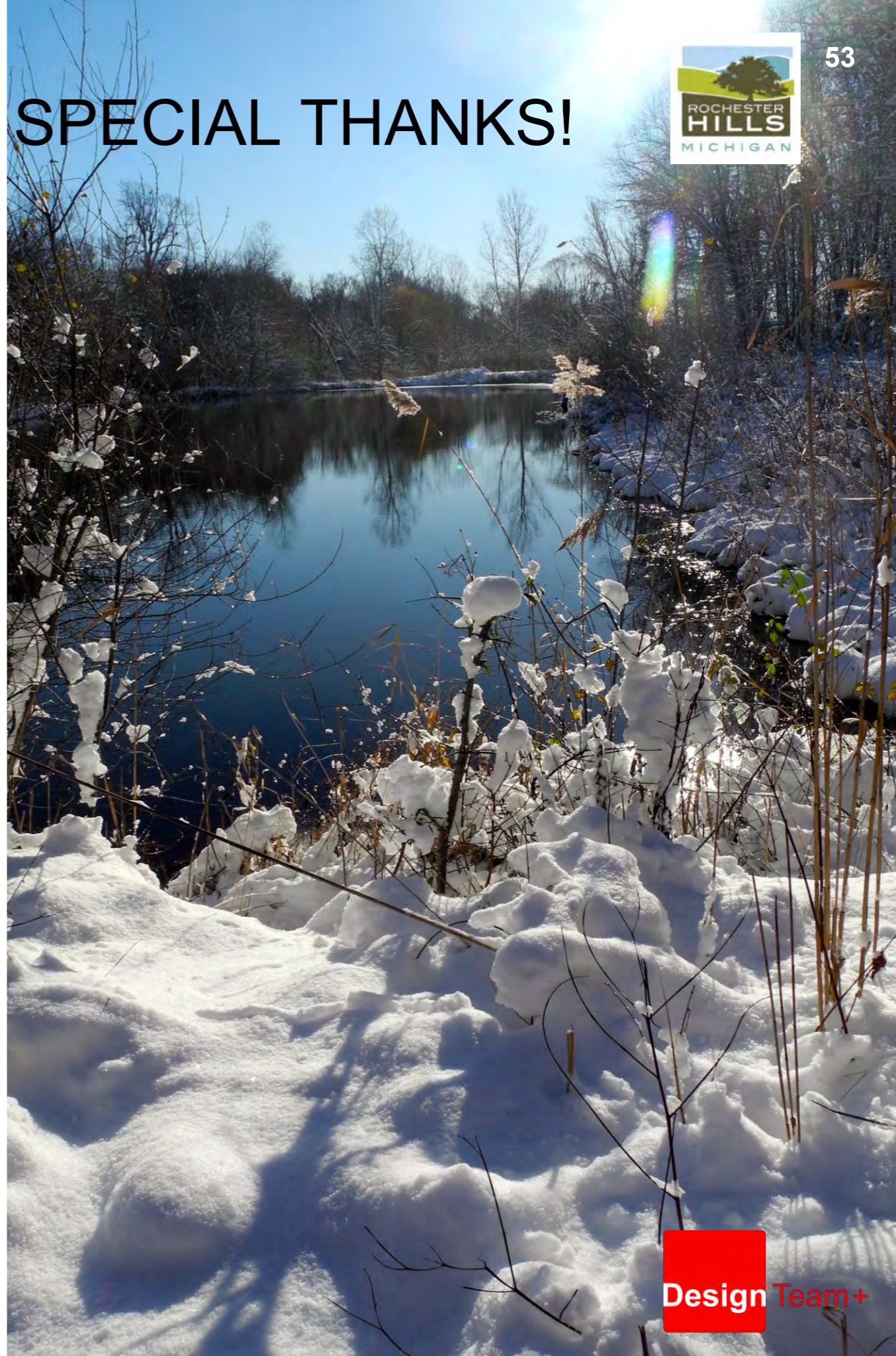
ALLIED DESIGN LANDSCAPE LAND - STUDIO

Professors Will Allen, Ralph Núñez, Donn Perez

LTU STUDENTS

Jeremiah Armstrong, Breck Crandell, Erion Lulashi, Matt Puz,
Greg Nowicki, Dee Hewitt, Brian Halteman, Rachelle Hiser,
Fran DePalma, Flora Pattah, Stephen Tenney, Amy Michalek,
Jonathan Sterns, Rene Kadoo, Shannon Harte, Kyle Bobcean,
Ibrahim Alsharif, Fady Tawfiq

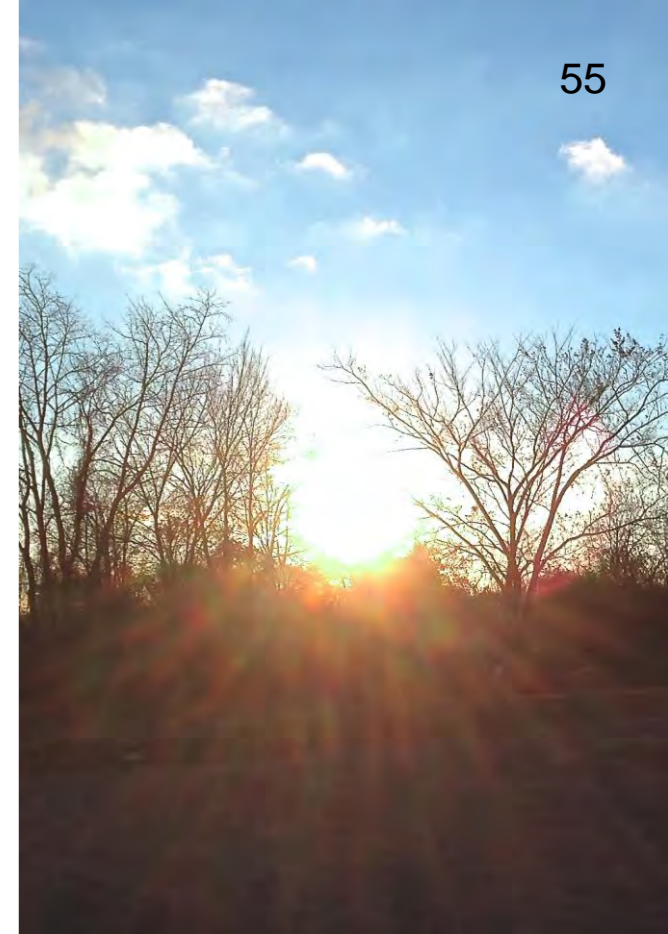
SPECIAL THANKS!



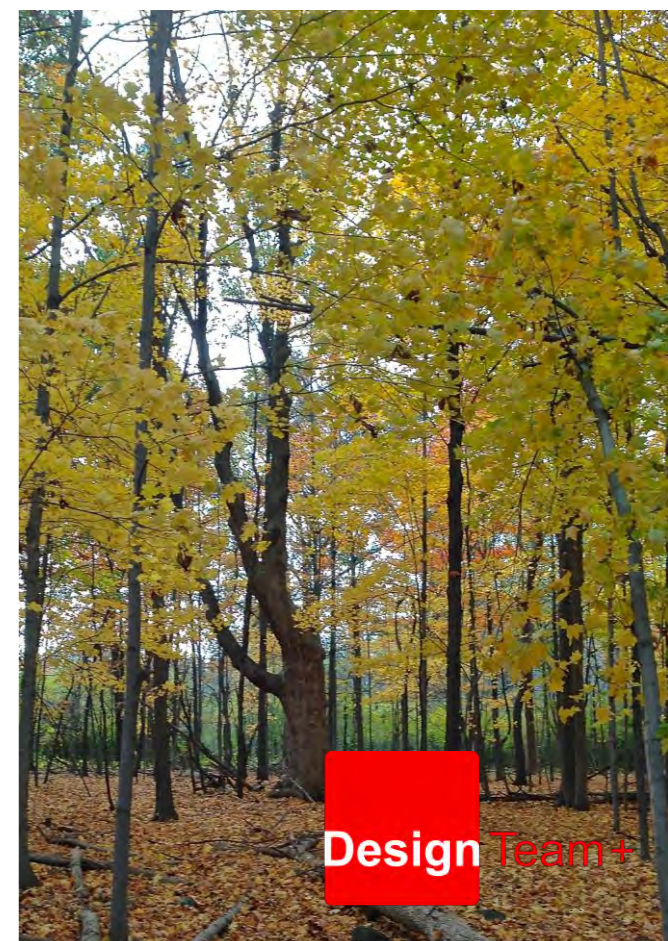
“WE SHALL NOT CEASE
FROM EXPLORATION, AND
THE END OF ALL OUR
EXPLORING WILL BE TO
ARRIVE WHERE WE
STARTED AND KNOW THE
PLACE FOR THE FIRST
TIME.”

T. S. ELIOT





RIVERBEND PARK SCENIC BEAUTY





RIVERBEND PARK

EXERCISE | EXPLORE | ENGAGE | EXPERIENCE | EDUCATE | ENJOY!

