



Appendix B

Figures

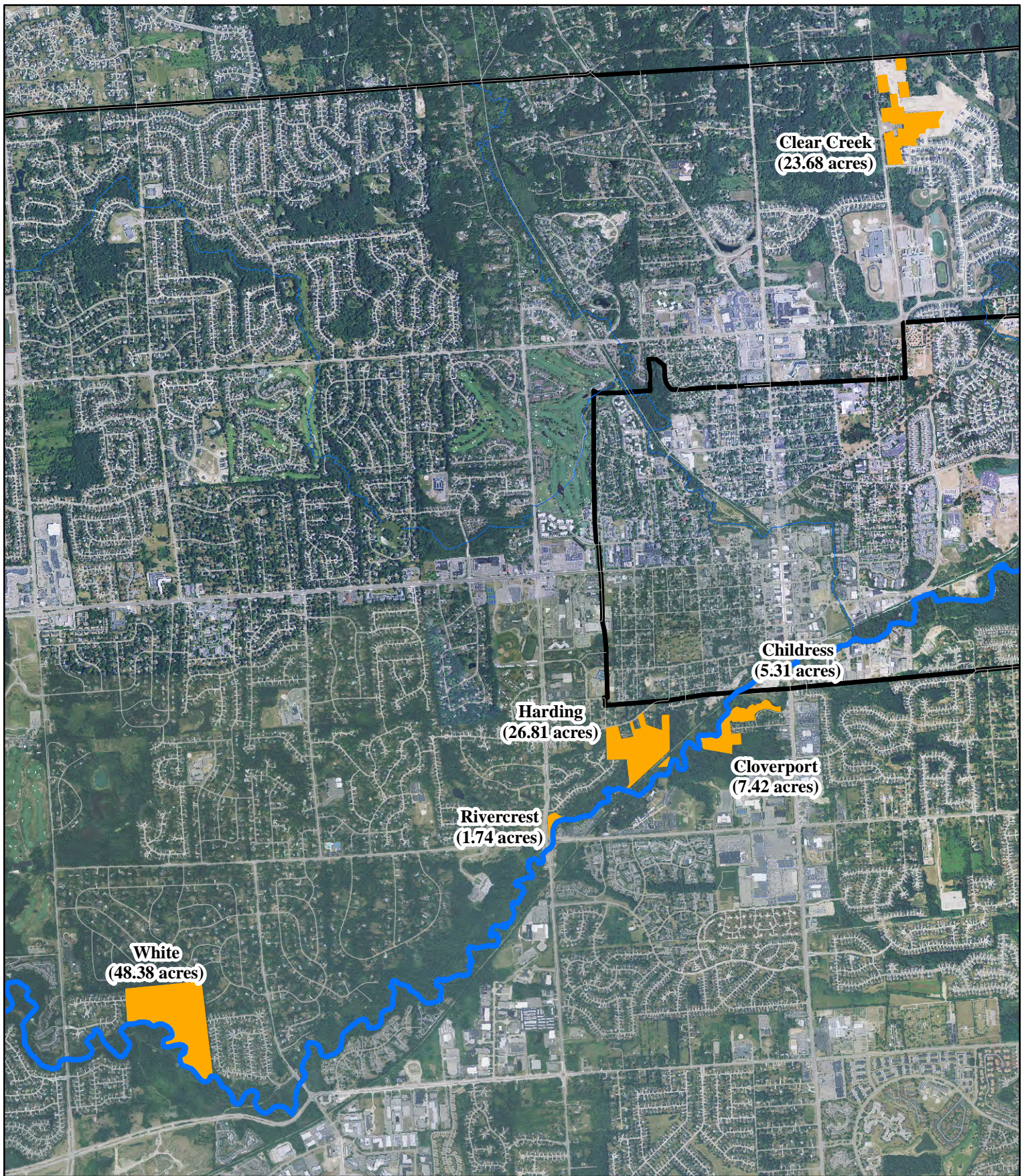


Figure 1. Greenspace Properties Location Map

NE 1386 Rochester Hills Stewardship Project
 Client: City of Rochester Hills
 Rochester Hills, Oakland, Co., MI
 Source: MiGDL and Rochester Hills GIS
 Habitat Assessments: May - July 2015
 Map Created: September 21, 2015



	NISWANDER ENVIRONMENTAL	9436 Maltby Road, Brighton, MI 48116
		810.225.0539 office 810.225.0653 fax

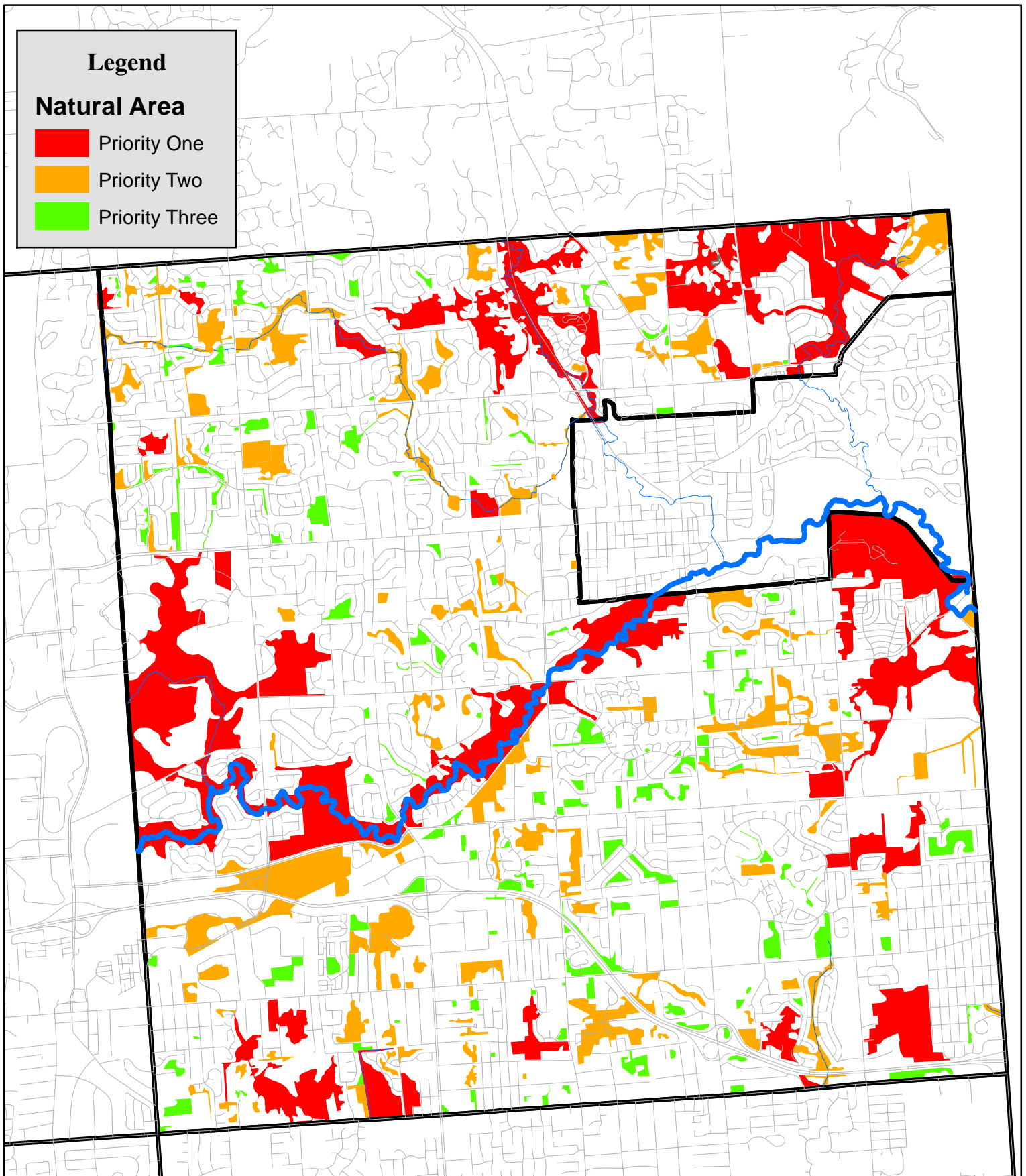
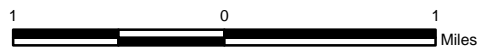


Figure 2. Natural Areas Map

NE 1386 Rochester Hills Stewardship Project
 Client: City of Rochester Hills
 City of Rochester Hills, Oakland, Co., MI
 Source: MiGDL and Rochester Hills GIS
 Natural Features Inventory: 2004
 Map Created: September 21, 2015



NISWANDER ENVIRONMENTAL
 9436 Maltby Road, Brighton, MI 48116
 810.225.0539 office | 810.225.0653 fax

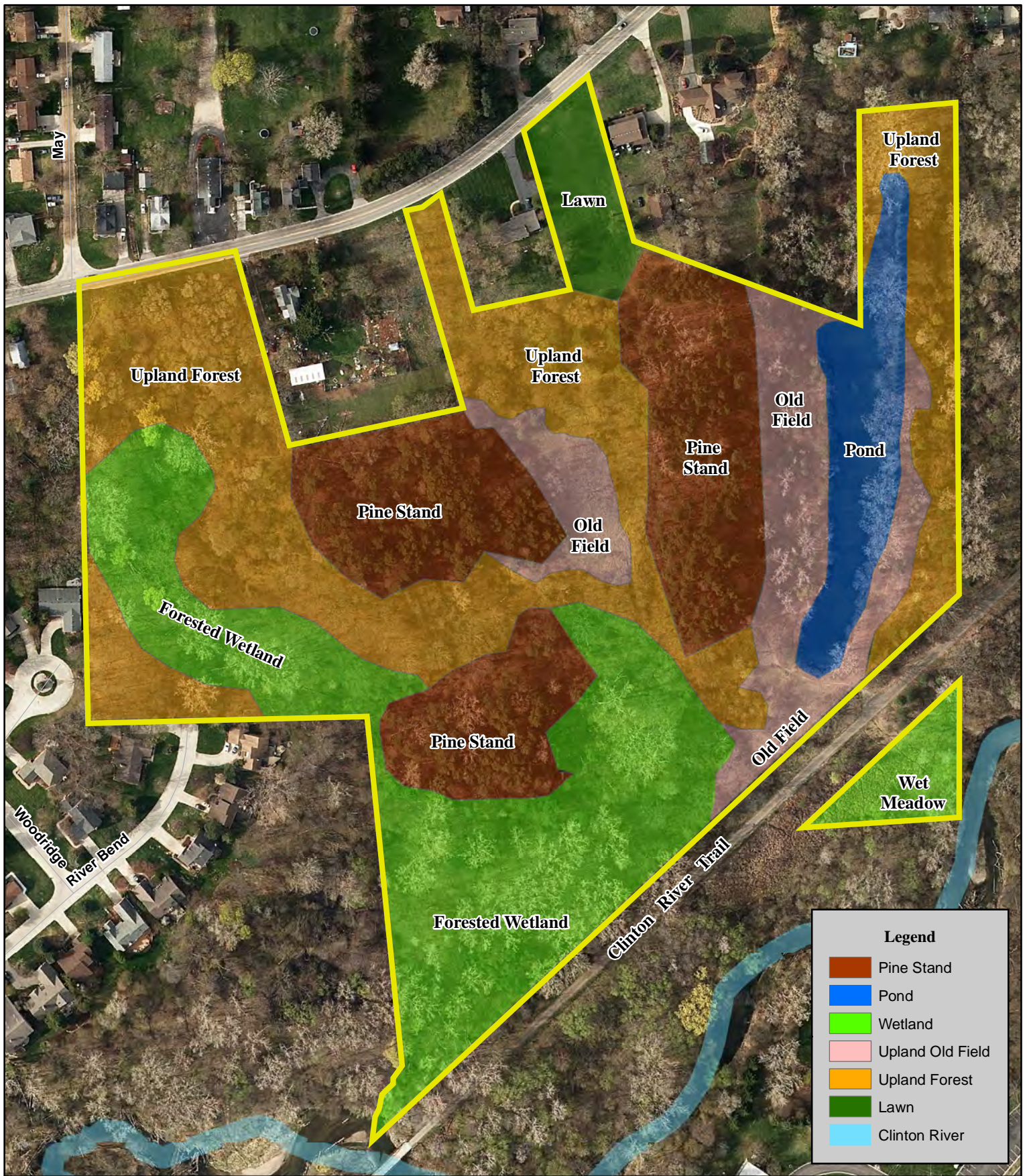


Figure 3. Natural Features Map - Harding Property

NE 1386 Rochester Hills Stewardship Project
 26.81-acre Harding Property
 Section 15 of Rochester Hills, Oakland, Co., MI
 Source: Rochester Hills GIS Dept
 Habitat Assessment: May 26, 2015
 Map Created: September 21, 2015



	NISWANDER ENVIRONMENTAL	9436 Maltby Road, Brighton, MI 48116 810.225.0539 office 810.225.0653 fax
--	-----------------------------------	--

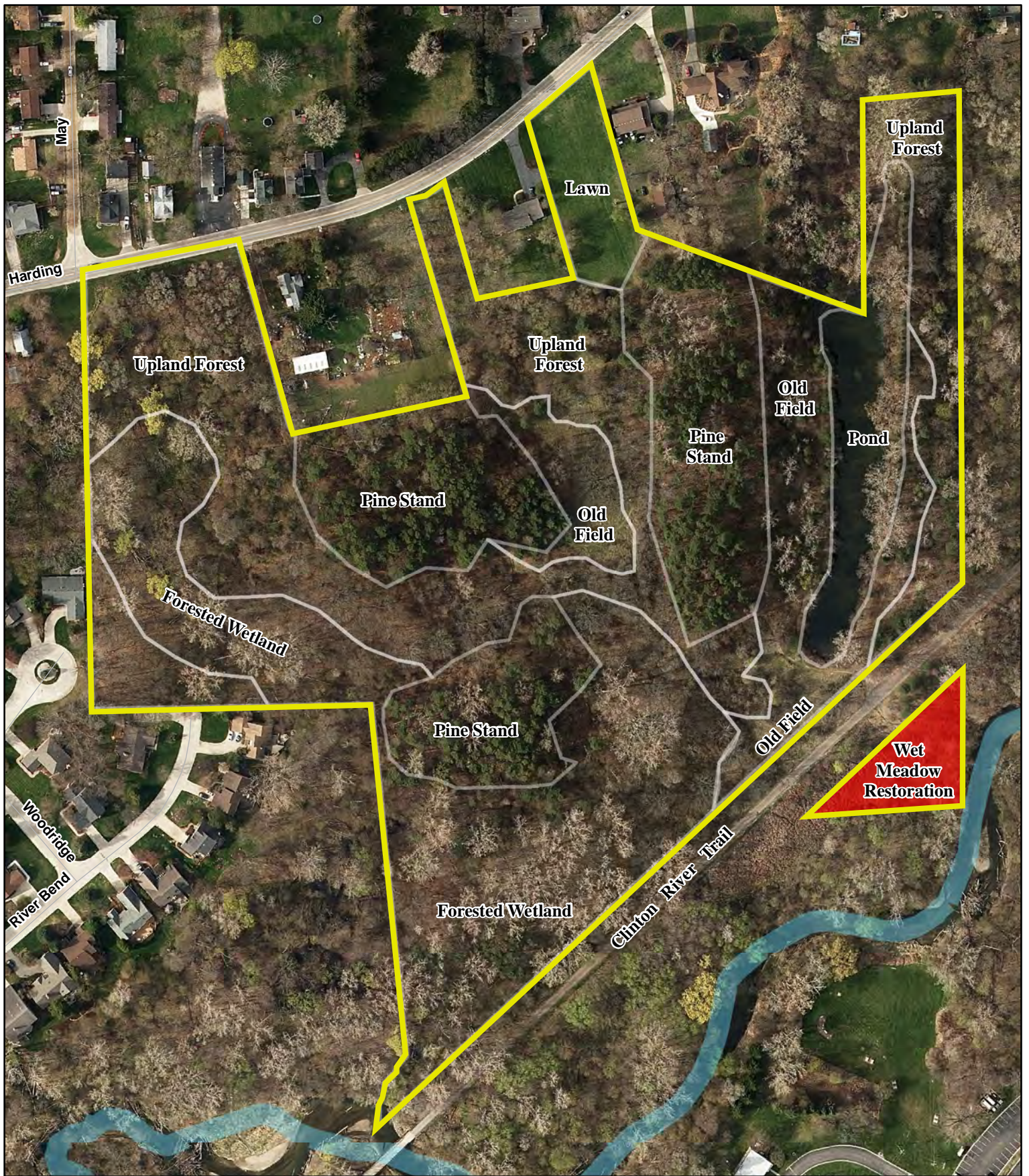
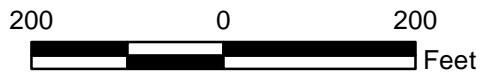


Figure 3a - Harding Property Wet Meadow Restoration Map

NE 1386 Rochester Hills Stewardship Project
 26.81-acre Harding Property
 Section 15 of Rochester Hills, Oakland, Co., MI
 Source: Rochester Hills GIS Dept
 Habitat Assessment: May 26, 2015
 Map Created: September 21, 2015



NISWANDER
 ENVIRONMENTAL

9436 Maltby Road, Brighton, MI 48116
 810.225.0539 office | 810.225.0653 fax

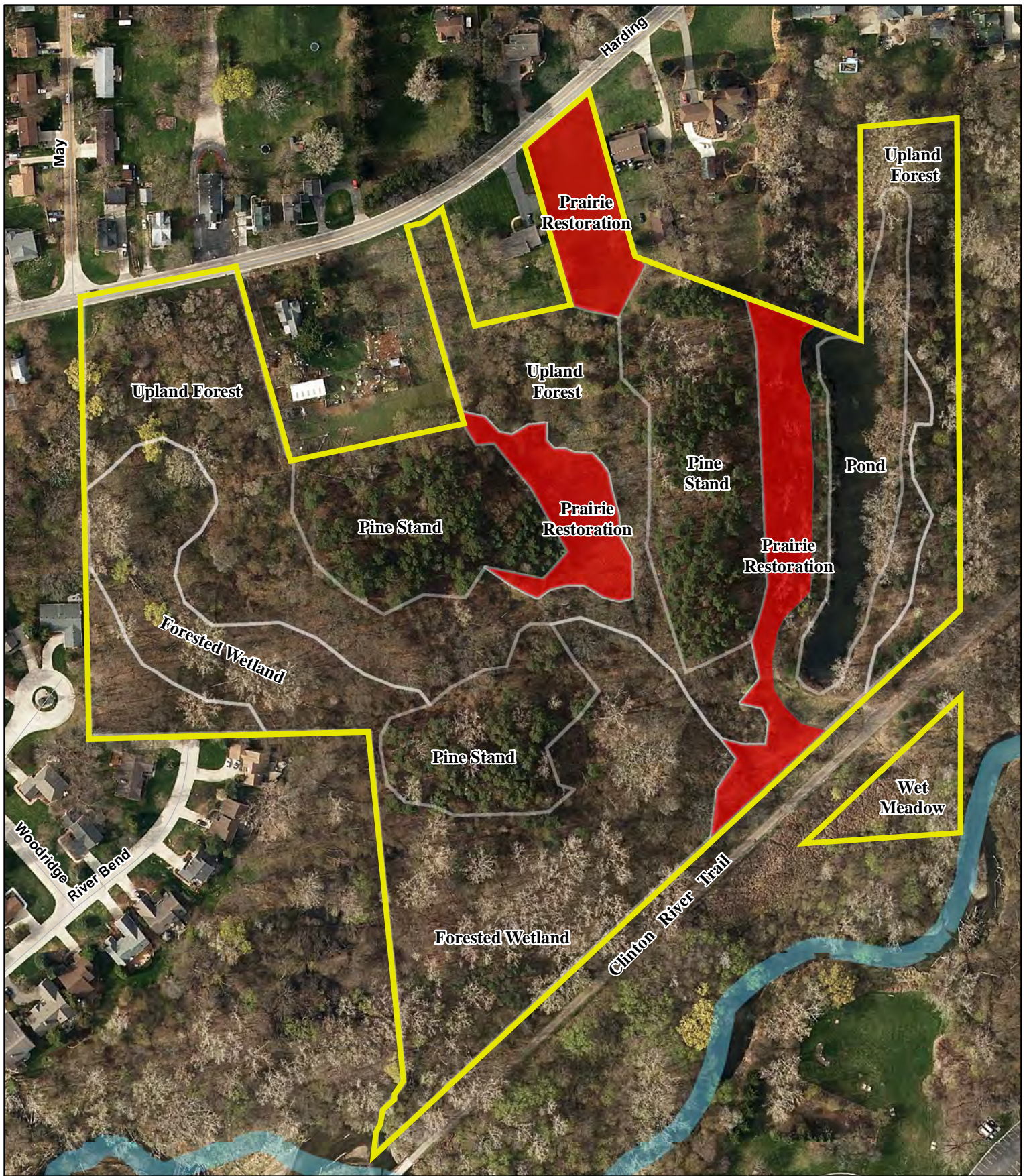


Figure 3b - Harding Property Prairie Restoration Map

NE 1386 Rochester Hills Stewardship Project
 26.81-acre Harding Property
 Section 15 of Rochester Hills, Oakland, Co., MI
 Source: Rochester Hills GIS Dept
 Habitat Assessment: May 26, 2015
 Map Created: September 21, 2015



NISWANDER
ENVIRONMENTAL

9436 Maltby Road, Brighton, MI 48116
 810.225.0539 office | 810.225.0653 fax



Figure 3c - Harding Property Pond Area Enhancement Map

NE 1386 Rochester Hills Stewardship Project
 26.81-acre Harding Property
 Section 15 of Rochester Hills, Oakland, Co., MI
 Source: Rochester Hills GIS Dept
 Habitat Assessment: May 26, 2015
 Map Created: September 21, 2015



NISWANDER
 ENVIRONMENTAL

9436 Maltby Road, Brighton, MI 48116
 810.225.0539 office | 810.225.0653 fax

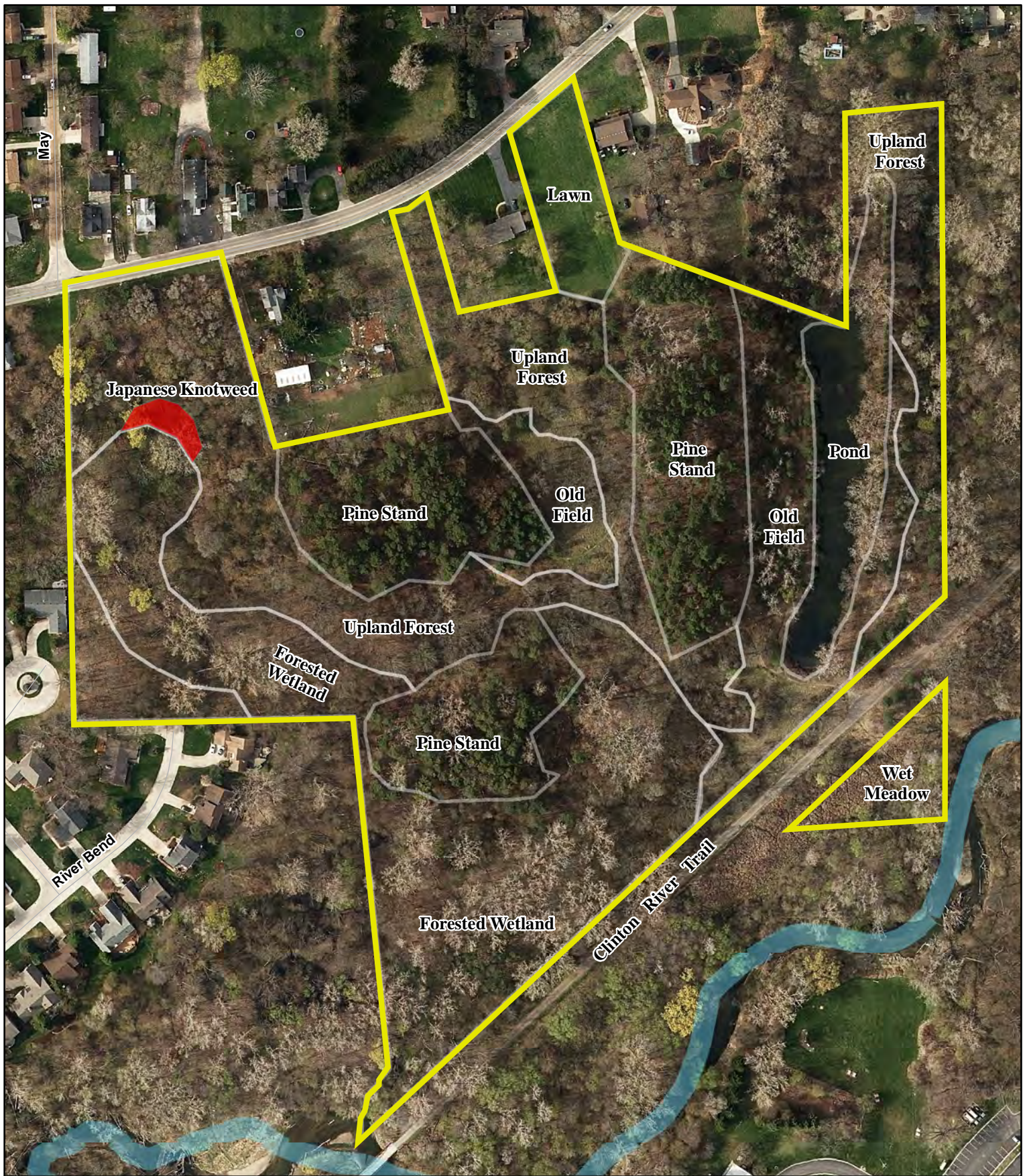


Figure 3d - Harding Property Japanese Knotweed Control Map

NE 1386 Rochester Hills Stewardship Project
 26.81-acre Harding Property
 Section 15 of Rochester Hills, Oakland, Co., MI
 Source: Rochester Hills GIS Dept
 Habitat Assessment: May 26, 2015
 Map Created: September 21, 2015



NISWANDER
 ENVIRONMENTAL

9436 Maltby Road, Brighton, MI 48116
 810.225.0539 office | 810.225.0653 fax

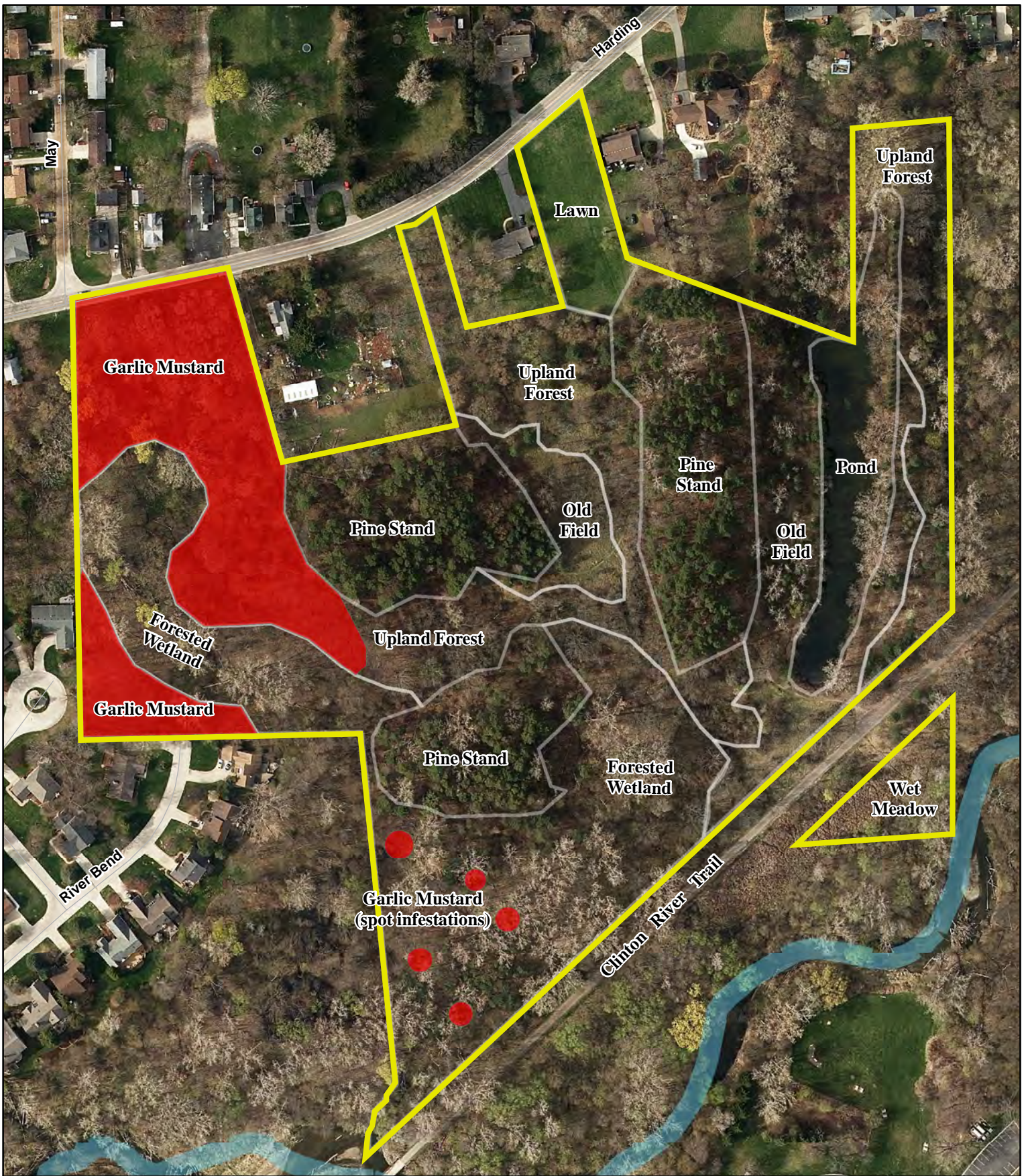


Figure 3e - Harding Property Garlic Mustard Control Map

NE 1386 Rochester Hills Stewardship Project
 26.81-acre Harding Property
 Section 15 of Rochester Hills, Oakland, Co., MI
 Source: Rochester Hills GIS Dept
 Habitat Assessment: May 26, 2015
 Map Created: September 21, 2015



NISWANDER
ENVIRONMENTAL

9436 Maltby Road, Brighton, MI 48116
 810.225.0539 office | 810.225.0653 fax