

Historical Courtyards & Gardens

15001 Kercheval, Grosse Pointe Park, MI 48230

Phone 313-824-2088 Fax 313-824-2091

www.historicalcourtyards.com

Washington Residence

Part of the NorthEast 1/4 of Section 1, T.03N., R. 11 E.

City of Rochester Hills, Oakland County MI

EXISTING TREE SCHEDULE

CALIPER	CANOPY	TYPE	CALIPER	CANOPY	TYPE	CALIPER	CANOPY	TYPE	CALIPER	CANOPY	TYPE	CALIPER	CANOPY	TYPE	CALIPER	CANOPY	TYPE	
11.5"	14'	SPRUCE	10"	20'	ELM	15"	18'	SPRUCE	10"	20'	SPRUCE	10"	20'	SPRUCE	10"	20'	SPRUCE	
16"	22'	SPRUCE	10"	20'	OAK	14"	27'	SPRUCE	10"	20'	SPRUCE	10"	20'	SPRUCE	10"	20'	SPRUCE	
16"	18'	SPRUCE	11"	24'	SPRUCE	8"	18'	SPRUCE	7"	30'	SIBERIAN ELM	41"	20'	SIBERIAN ELM				
11"	20'	SPRUCE	18"	30'	SPRUCE	21"	22'	SPRUCE	13"	20'	DBL. SIBERIAN ELM	8"	30'	SIBERIAN ELM				
10"	18'	SPRUCE	13"	47'	SPRUCE	21"	24'	SPRUCE	8"	30'	SIBERIAN ELM	20"	60'	SIBERIAN ELM				
10"	24'	SPRUCE	18"	24'	SPRUCE	21"	27'	SPRUCE	12"	30'	SIBERIAN ELM	14"	20'	SPRUCE				
7"	10'	SPRUCE	14"	24'	SPRUCE	22"	24'	SPRUCE	12"	30'	ASH	14"	20'	SPRUCE				
16"	20'	SPRUCE	9"	18'	MULTI BOX ALDER	16"	22'	SPRUCE	13"	20'	ASH	11"	24'	SPRUCE				
7"	24'	BOKLIDER	9"	18'	MULTI BOX ALDER	19"	24'	SPRUCE	11"	28'	ASH	11"	28'	OAK				
9"	12'	SPRUCE	9"	18'	MULTI BOX ALDER	17"	22'	SPRUCE	9"	24'	SIBERIAN ELM	13"	22'	SPRUCE				
12"	20'	SPRUCE	9"	18'	MULTI BOX ALDER	17"	49'	SPRUCE	14"	30'	SIBERIAN ELM	14"	24'	SPRUCE				
8"	14'	SPRUCE	9"	18'	MULTI BOX ALDER	18"	47'	MAPLE	10"	20'	SIBERIAN ELM	12"	47'	SIBERIAN ELM				
21"	37'	SPRUCE	9"	18'	MULTI BOX ALDER	20"	16'	SPRUCE	36"	24'	SIBERIAN ELM	8"	24'	SIBERIAN ELM				
9"	10'	SPRUCE	20"	28'	SPRUCE	10"	60'	ASH	20"	10'	OAK	9"	32'	SIBERIAN ELM				
14"	22'	SPRUCE	8"	22'	MULTI BOX ALDER	16"	67'	SILVER MAPLE	16"	20'	OAK	16"	24'	SIBERIAN ELM				
7"	10'	SPRUCE	11"	20'	SPRUCE	17"	40'	SILVER MAPLE	15"	30'	OAK	20"	36'	SIBERIAN ELM				
9"	14'	SPRUCE	24"	20'	SPRUCE	17"	18'	DBL. CHOICE CHERRY	10"	18'	OAK	8"	20'	BEECH				
12"	18'	SPRUCE	16"	32'	SPRUCE	16"	16'	SPRUCE	24"	30'	CHOICE CHERRY	14"	33'	SIBERIAN ELM				
24"	20'	SPRUCE	22"	46"	SPRUCE	8"	24'	SIBERIAN ELM	10"	44"	OAK	7"	32'	SIBERIAN ELM				
10"	18'	SPRUCE	18"	30'	SPRUCE	7"	22'	SIBERIAN ELM	11"	14"	OAK	11"	36'	SIBERIAN ELM				
9"	18'	SPRUCE	9"	12'	SUGAR MAPLE	11"	24'	SPRUCE	11"	18'	OAK	8"	60'	SIBERIAN ELM				
21"	18'	SPRUCE	14"	24'	SUGAR MAPLE	17"	24"	87'	OAK	35"	60"	OAK	14"	20'	SIBERIAN ELM			
18"	18'	SPRUCE	10"	30'	SUGAR MAPLE	10"	72"	OAK	28"	30"	SIBERIAN ELM	16"	40"	OAK				
7"	24'	APPLE	21"	30'	SUGAR MAPLE	24"	32"	69'	OAK	14"	18'	OAK	13"	18'	SPRUCE			
8"	20'	SIBERIAN ELM	20"	24'	SUGAR MAPLE	14"	24'	SPRUCE	21"	50'	OAK	11"	15"	SPRUCE				
54"	46"	SIBERIAN ELM	14"	18'	SPRUCE	32"	70'	ASH	18"	60"	ASH	18"	18"	SPRUCE				
9"	20'	SIBERIAN ELM	14"	18'	SPRUCE	13"	20'	SPRUCE	21"	30"	SIBERIAN ELM	14"	60"	SIBERIAN ELM				
8"	18'	SIBERIAN ELM	18"	24'	SPRUCE	9"	20'	SPRUCE	18"	20"	OAK	8"	28"	SIBERIAN ELM				
6"	15'	SIBERIAN ELM	10"	24'	SPRUCE	14"	27'	SPRUCE	18"	40"	MULBERRY	14"	30"	SIBERIAN ELM				
16"	18'	ASH	24"	24'	SPRUCE	10"	20'	SPRUCE	10"	24'	SPRUCE	21"	34"	DBL. OAK				

TOTAL TREES ON SITE=151



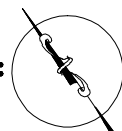
EXISTING SITE CONDITIONS

Date: April 2nd, 2012

Revised:

Scale: 1" = 30' ; 0"

North:



Sheet: A-1

Composed By:
James Meyers

Landscape Artist

Composed By:
Andrew Poshmann

Landscape Artist

©2012 HISTORICAL COURTYARDS & GARDENS

All ideas and/or concepts either expressed or implied are the sole intellectual property of HISTORICAL COURTYARDS & GARDENS and James A. Meyers. They are not to be reproduced, distributed or recreated in any fashion. The concepts expressed and/or implied cannot be modified, altered, or physically created without the written consent of the aforementioned artist.

Historical Courtyards & Gardens

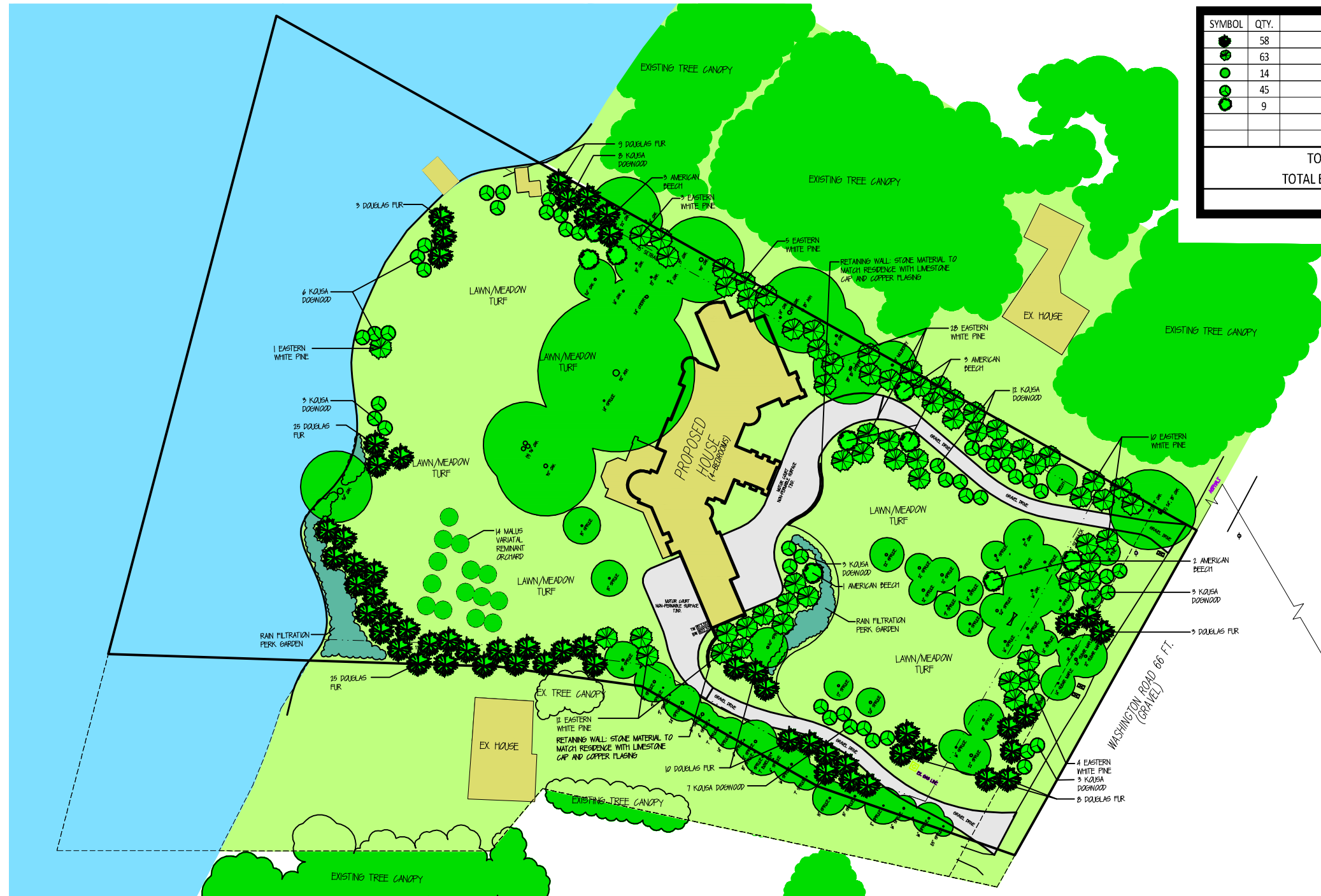
15001 Kercheval, Grosse Pointe Park, MI 48230
 Phone 313-824-2088 Fax 313-824-2091
www.historicalcourtyards.com

Washington Residence

Part of the NorthEast 1/4 of Section 1, T.03N., R. 11 E.
 City of Rochester Hills, Oakland County MI

TREE PLANTING SCHEDULE

SYMBOL	QTY.	TYPE	SIZE
	58	DOUGLAS FIR	25'
	63	EASTERN WHITE PINE	25'
	14	MALUS	9'
	45	KOUSA DOGWOOD	9'
	9	AMERICAN BEECH	6" CAL.
TOTAL NEW TREES ON SITE=			189
TOTAL EXISTING TREES ON SITE=			73
TOTAL TREES ON SITE=			262



NATURALIZED SCREENING PLAN

Date: April 4th, 2012
 Revisions: 04; 10; 2012: 04; 12; 2012

Scale: 1" = 30' ; 0"

Sheet: A-3



Composed By:
 James Meyers

Landscape Artist

Composed By:
 Andrew Poshmann

Landscape Artist

©2012 HISTORICAL COURTYARDS & GARDENS

All ideas and/or concepts either expressed or implied are the sole intellectual property of HISTORICAL COURTYARDS & GARDENS and James A. Meyers. They are not to be reproduced, distributed or recreated in any fashion. The concepts expressed and/or implied cannot be modified, altered, or physically created without the written consent of the aforementioned entity.

Historical Courtyards & Gardens

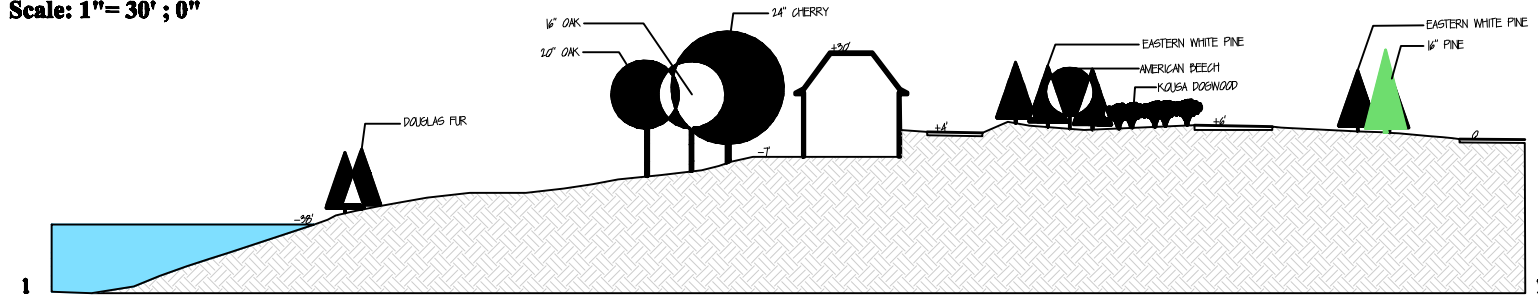
15001 Kercheval, Grosse Pointe Park, MI 48230
 Phone 313-824-2088 Fax 313-824-2091
www.historicalcourtyards.com

Washington Residence

Part of the NorthEast $\frac{1}{4}$ of Section 1, T.03N., R. 11 E.
 City of Rochester Hills, Oakland County MI

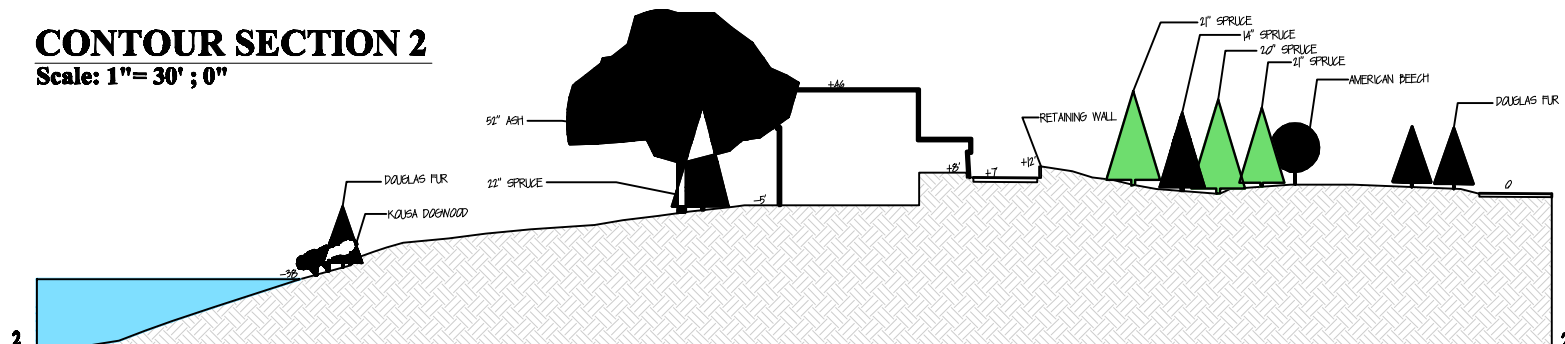
CONTOUR SECTION 1

Scale: 1" = 30' ; 0"



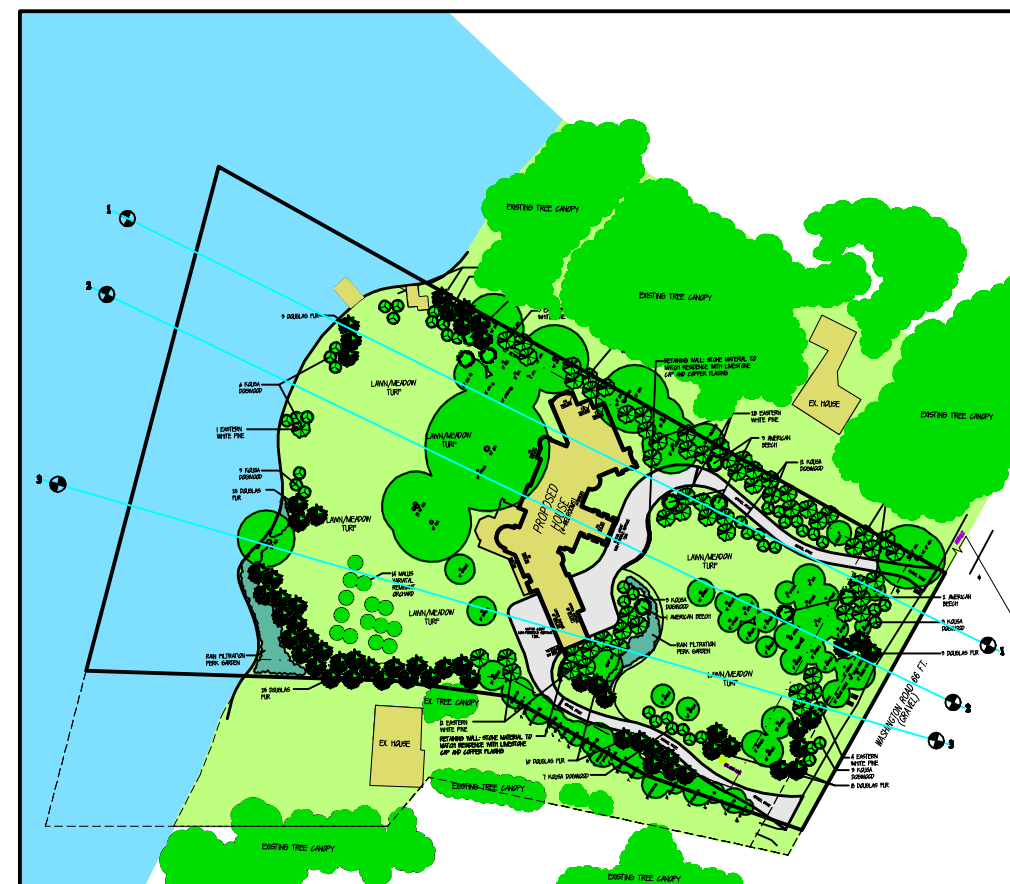
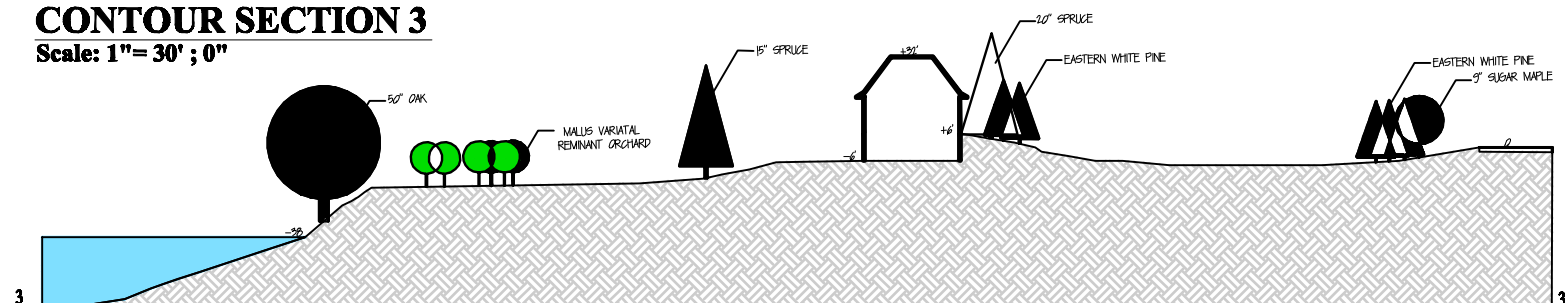
CONTOUR SECTION 2

Scale: 1" = 30' ; 0"



CONTOUR SECTION 3

Scale: 1" = 30' ; 0"



CONTOUR SECTION PLAN

not to scale:

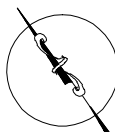
CONTOUR STUDY

Date: April 17th, 2012

Revision:

Scale: 1" = 30' ; 0"

North:



Sheet: A-3

Composed By:
James Meyers

Landscape Artist

Composed By:
Andrew Poshmann

Landscape Artist

©2012 HISTORICAL COURTYARDS & GARDENS

All ideas and/or concepts either expressed or implied are the sole intellectual property of HISTORICAL COURTYARDS & GARDENS and James A. Meyers. They are not to be reproduced, distributed or recreated in any fashion. The concepts expressed and/or implied cannot be modified, altered, or physically created without the written consent of the aforementioned entity.

Historical Courtyards & Gardens

15001 Kercheval, Grosse Pointe Park, MI 48230
 Phone 313-824-2088 Fax 313-824-2091
www.historicalcourtyards.com

EXISTING TREE SCHEDULE





CALIPER	CANOPY	TYPE	CALIPER	CANOPY	TYPE	CALIPER	CANOPY	TYPE	CALIPER	CANOPY	TYPE	CALIPER	CANOPY	TYPE	CALIPER	CANOPY	TYPE
11.5"	14'	SPRUCE	10"	20'	ELM	15"	18'	SPRUCE	10"	20'	SPRUCE	20"	32'	SPRUCE	18", 24"	46'	DBL. OAK
16"	22'	SPRUCE	50"	50'	OAK	14"	20'	SPRUCE	19"	28'	SPRUCE	31"	60'	SIBERIAN ELM			
16"	18'	SPRUCE	15"	24'	SPRUCE	9"	18'	SPRUCE	7"	30'	SIBERIAN ELM	41"	70'	SIBERIAN ELM			
11"	26'	SPRUCE	18"	50'	SPRUCE	21"	20'	SPRUCE	13"	24'	DBL. SIBERIAN ELM	9"	36'	SIBERIAN ELM			
15"	18'	SPRUCE	37"	47'	SPRUCE	21"	24'	SPRUCE	8"	30'	SIBERIAN ELM	20"	60'	SIBERIAN ELM			
15"	24'	SPRUCE	18"	24'	SPRUCE	21"	20'	SPRUCE	12"	30'	SIBERIAN ELM	14"	20'	SPRUCE			
7"	19'	SPRUCE	16"	24'	SPRUCE	22"	24'	SPRUCE	17"	30'	ASH	16"	20'	SPRUCE			
16"	26'	SPRUCE	5"	18'	MULTI BOX ALDER	16"	22'	SPRUCE	15"	26'	ASH	13"	24'	SPRUCE			
7"	24'	BOXELDER	5"	18'	MULTI BOX ALDER	19"	24'	SPRUCE	11"	28'	ASH	12"	28'	OAK			
5"	12'	SPRUCE	5"	18'	MULTI BOX ALDER	17"	22'	SPRUCE	6"	24'	SIBERIAN ELM	17"	22'	SPRUCE			
12"	26'	SPRUCE	5"	18'	MULTI BOX ALDER	17"	40'	SPRUCE	14"	30'	SIBERIAN ELM	16"	24'	SPRUCE			
8"	14'	SPRUCE	5"	18'	MULTI BOX ALDER	18"	40'	MAPLE	10"	26'	SIBERIAN ELM	12"	40'	SIBERIAN ELM			
21"	30'	SPRUCE	5"	18'	MULTI BOX ALDER	20"	16'	SPRUCE	16"	24'	SIBERIAN ELM	6"	24'	SIBERIAN ELM			
6"	18'	SPRUCE	20"	28'	SPRUCE	19"	60'	ASH	20"	16'	OAK	9"	32'	SIBERIAN ELM			
14"	22'	SPRUCE	8"	22'	MULTI BOX ALDER	16"	60'	SILVER MAPLE	16"	20'	OAK	16"	24'	SIBERIAN ELM			
7"	16'	SPRUCE	17"	20'	SPRUCE	17"	40'	SILVERMAPLE	15"	30'	OAK	20"	36'	SIBERIAN ELM			
6"	14'	SPRUCE	20"	20'	SPRUCE	17", 18"	50'	DBL. CHOKE CHERRY	16"	16'	OAK	6"	20'	BEECH			
12"	16'	SPRUCE	16"	32'	SPRUCE	16"	16'	SPRUCE	24"	50'	CHOKE CHERRY	14"	35'	SIBERIAN ELM			
24"	26'	SPRUCE	22"	44'	SPRUCE	8"	24'	SIBERIAN ELM	19"	44'	OAK	7"	32'	SIBERIAN ELM			
9"	18'	SPRUCE	18"	36'	SPRUCE	7"	20'	SIBERIAN ELM	11"	14'	OAK	11"	36'	SIBERIAN ELM			
9"	18'	SPRUCE	9"	12'	SUGAR MAPLE	13"	26'	SPRUCE	13"	18'	OAK	8"	60'	SIBERIAN ELM			
21"	18'	SPRUCE	14"	24'	SUGAR MAPLE	17", 24", 24"	80'	OAK	35"	60'	OAK	14"	70'	SIBERIAN ELM			
18"	28'	SPRUCE	29"	50'	SUGAR MAPLE	32"	70'	OAK	28"	70'	SIBERIAN ELM	16"	40'	OAK			
7"	24'	APPLE	21"	30'	SUGAR MAPLE	24", 32", 33"	60'	OAK	14"	18'	OAK	13"	18'	SPRUCE			
8"	25'	SIBERIAN ELM	20"	24'	SUGAR MAPLE	14"	24'	SPRUCE	23"	50'	OAK	11"	15'	SPRUCE			
54"	45'	SIBERIAN ELM	14"	16'	SPRUCE	52"	70'	ASH	18"	60'	ASH	16"	18'	SPRUCE			
9"	20'	SIBERIAN ELM	14"	18'	SPRUCE	13"	20'	SPRUCE	21"	76'	SIBERIAN ELM	14"	60'	SIBERIAN ELM			
8"	18'	SIBERIAN ELM	18"	24'	SPRUCE	9"	20'	SPRUCE	18"	26'	OAK	8"	28'	SIBERIAN ELM			
6"	15'	SIBERIAN ELM	16"	24'	SPRUCE	14"	20'	SPRUCE	18"	40'	MULBERRY	14"	30'	SIBERIAN ELM			
16"	28'	ASH	20"	24'	SPRUCE	10"	20'	SPRUCE	16"	26'	SPRUCE	7", 7"	34'	DBL. OAK			
TOTAL TREES ON SITE=151																	

Washington Residence
 Part of the NorthEast 1/4 of
 Section 1, T.03N. , R. 11 E.
 City of Rochester Hills,
 Oakland County MI

TREE MODIFICATION SCHEDULE

CALIPER	TYPE	ACTION	CALIPER	TYPE	ACTION	CALIPER	TYPE	ACTION
5"	MULTI-BOX ALDER	WITHIN BUILDING ENVELOPE	19"	ASH	WITHIN BUILDING ENVELOPE	9"	SIBERIAN ELM	NON-NATIVE INVASIVE SOFTWOOD
5"	MULTI-BOX ALDER	WITHIN BUILDING ENVELOPE	16"	SILVER MAPLE	NON-NATIVE INVASIVE SOFTWOOD	20"	SIBERIAN ELM	NON-NATIVE INVASIVE SOFTWOOD
5"	MULTI-BOX ALDER	WITHIN BUILDING ENVELOPE	18"	SPRUCE	DISEASED/MITE INFESTATION	14"	SPRUCE	DISEASED/MITE INFESTATION
5"	MULTI-BOX ALDER	WITHIN BUILDING ENVELOPE	17"	SILVER MAPLE	NON-NATIVE INVASIVE SOFTWOOD	13"	SPRUCE	DISEASED/MITE INFESTATION
5"	MULTI-BOX ALDER	WITHIN BUILDING ENVELOPE	16"	SPRUCE	DISEASED/MITE INFESTATION	12"	SIBERIAN ELM	NON-NATIVE INVASIVE SOFTWOOD
5"	MULTI-BOX ALDER	WITHIN BUILDING ENVELOPE	7"	SIBERIAN ELM	NON-NATIVE INVASIVE SOFTWOOD	16"	SIBERIAN ELM	NON-NATIVE INVASIVE SOFTWOOD
5"	MULTI-BOX ALDER	WITHIN BUILDING ENVELOPE	8"	SIBERIAN ELM	NON-NATIVE INVASIVE SOFTWOOD	9"	SIBERIAN ELM	NON-NATIVE INVASIVE SOFTWOOD
8"	MULTI-BOX ALDER	WITHIN BUILDING ENVELOPE	10"	SPRUCE	DISEASED/MITE INFESTATION	20"	SIBERIAN ELM	NON-NATIVE INVASIVE SOFTWOOD
8"	SIBERIAN ELM	NON-NATIVE INVASIVE SOFTWOOD	10"	SPRUCE	DISEASED/MITE INFESTATION	14"	SIBERIAN ELM	NON-NATIVE INVASIVE SOFTWOOD
54"	SIBERIAN ELM	NON-NATIVE INVASIVE SOFTWOOD	14"	SPRUCE	DAMAGED	21"	SIBERIAN ELM	NON-NATIVE INVASIVE SOFTWOOD
9"	SIBERIAN ELM	NON-NATIVE INVASIVE SOFTWOOD	9"	SPRUCE	DISEASED/MITE INFESTATION	7"	SIBERIAN ELM	NON-NATIVE INVASIVE SOFTWOOD
8"	SIBERIAN ELM	NON-NATIVE INVASIVE SOFTWOOD	13"	SPRUCE	DISEASED/MITE INFESTATION	11"	SIBERIAN ELM	NON-NATIVE INVASIVE SOFTWOOD
6"	SIBERIAN ELM	NON-NATIVE INVASIVE SOFTWOOD	19"	SPRUCE	DAMAGED	8"	SIBERIAN ELM	NON-NATIVE INVASIVE SOFTWOOD
16"	ASH	DEAD	7"	SIBERIAN ELM	NON-NATIVE INVASIVE SOFTWOOD	14"	SIBERIAN ELM	NON-NATIVE INVASIVE SOFTWOOD
10"	SIBERIAN ELM	NON-NATIVE INVASIVE SOFTWOOD	8"	SIBERIAN ELM	NON-NATIVE INVASIVE SOFTWOOD	12"	SIBERIAN ELM	NON-NATIVE INVASIVE SOFTWOOD
(3) 24"	OAK	DAMAGED	12"	SIBERIAN ELM	NON-NATIVE INVASIVE SOFTWOOD	8"	SIBERIAN ELM	NON-NATIVE INVASIVE SOFTWOOD
15"	SPRUCE	DAMAGED	(2) 13", 10"	SIBERIAN ELM	NON-NATIVE INVASIVE SOFTWOOD	14"	SIBERIAN ELM	NON-NATIVE INVASIVE SOFTWOOD
31"	SPRUCE	DISEASED/MITE INFESTATION	17"	ASH	DEAD	7"	APPLE	NON-VIABLE SPECIMEN
16"	SPRUCE	DISEASED/MITE INFESTATION	15"	ASH	DEAD			
37"	SPRUCE	WITHIN BUILDING ENVELOPE-BARE	11"	ASH	DEAD	(2) 16"	CHOKE CHERRY	TRANSPLANT
13"	SPRUCE	DISEASED/MITE INFESTATION	6"	SIBERIAN ELM	DEAD			
16"	SPRUCE	WITHIN BUILDING ENVELOPE-BARE	14"	SIBERIAN ELM	DEAD			
18"	SPRUCE	DISEASED/MITE INFESTATION	10"	SIBERIAN ELM	DEAD			
29"	SIBERIAN ELM	NON-NATIVE INVASIVE SOFTWOOD	16"	SIBERIAN ELM	NON-NATIVE INVASIVE SOFTWOOD			
16"	SPRUCE	DISEASED/MITE INFESTATION	28"	SIBERIAN ELM	NON-NATIVE INVASIVE SOFTWOOD			
17"	SPRUCE	DISEASED/MITE INFESTATION	21"	SIBERIAN ELM	NON-NATIVE INVASIVE SOFTWOOD			
19"	SPRUCE	DISEASED/MITE INFESTATION	16"	SPRUCE	DISEASED/MITE INFESTATION			
18"	SPRUCE	DISEASED/MITE INFESTATION	20"	SPRUCE	DISEASED/MITE INFESTATION			
17"	SPRUCE	DISEASED/MITE INFESTATION	31"	SIBERIAN ELM	NON-NATIVE INVASIVE SOFTWOOD			
20"	SPRUCE	DISEASED/MITE INFESTATION	41"	SIBERIAN ELM	NON-NATIVE INVASIVE SOFTWOOD			
TOTAL TREES REMOVED= 78								
TOTAL TREES TRANSPLANTED= 1								

TREE PLANTING SCHEDULE

SYMBOL	QTY.	TYPE	SIZE
	58	DOUGLAS FIR	25'
	63	EASTERN WHITE PINE	25'
	14	MALUS:	9'
	45	KOUSA DOGWOOD	9'
	9	AMERICAN BEECH	6" CAL.
TOTAL NEW TREES ON SITE=		189	
TOTAL EXISTING TREES ON SITE=		73	
TOTAL TREES ON SITE=		262	

TREE SCHEDULES
 Date: April 12th, 2012

Composed By:
 James Meyers
 Landscape Artist

Composed By:
 Andrew Poehman
 Landscape Artist

©2012 HISTORICAL COURTYARDS & GARDENS
All items and/or concepts either expressed or implied are the sole intellectual property of HISTORICAL COURTYARDS & GARDENS and James A. Meyers. They are not to be reproduced, distributed or resented in any fashion. The concepts expressed and/or implied cannot be modified, altered, or physically created without the written consent of the aforementioned artist.



EXISTING



POINT OF VIEW



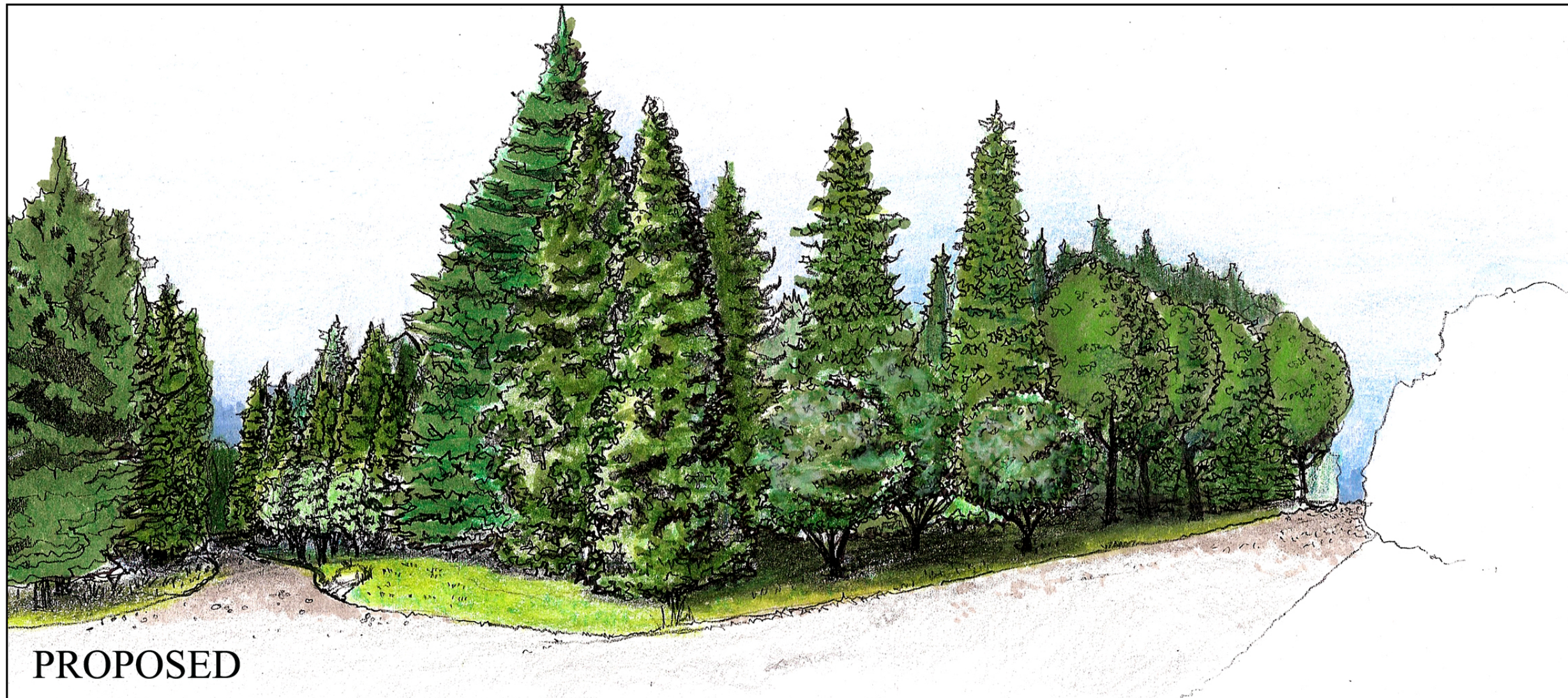
PROPOSED



EXISTING



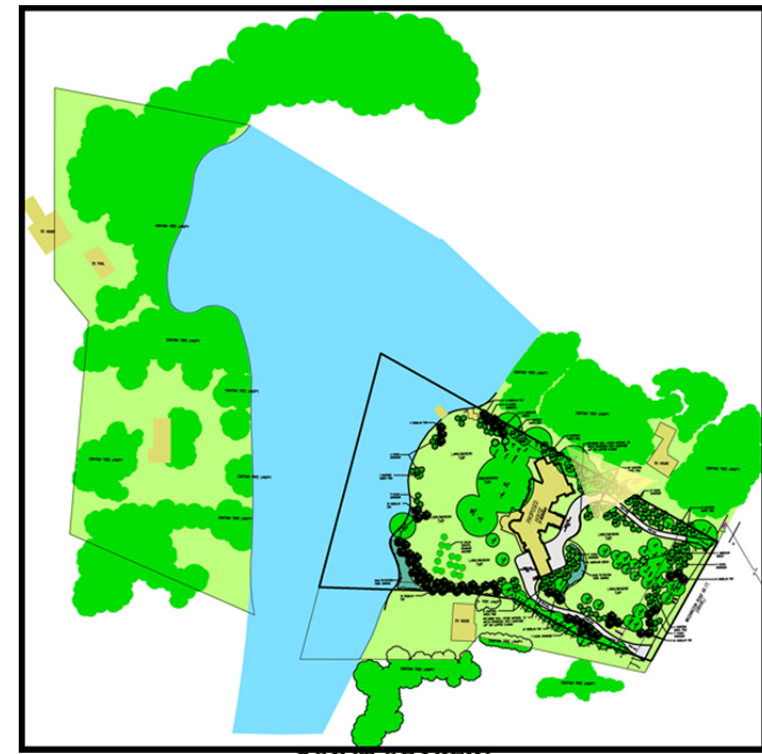
POINT OF VIEW



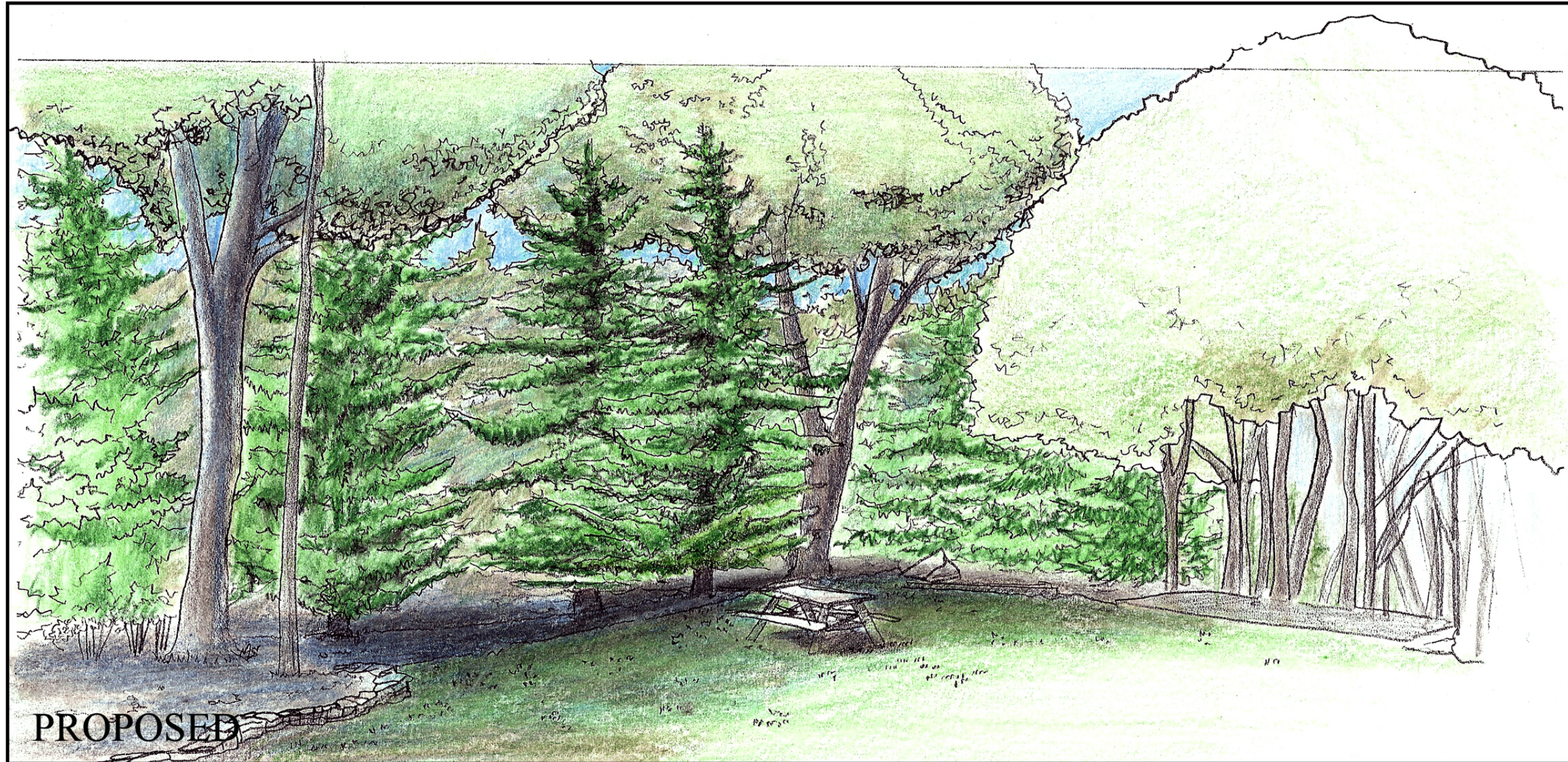
PROPOSED



EXISTING



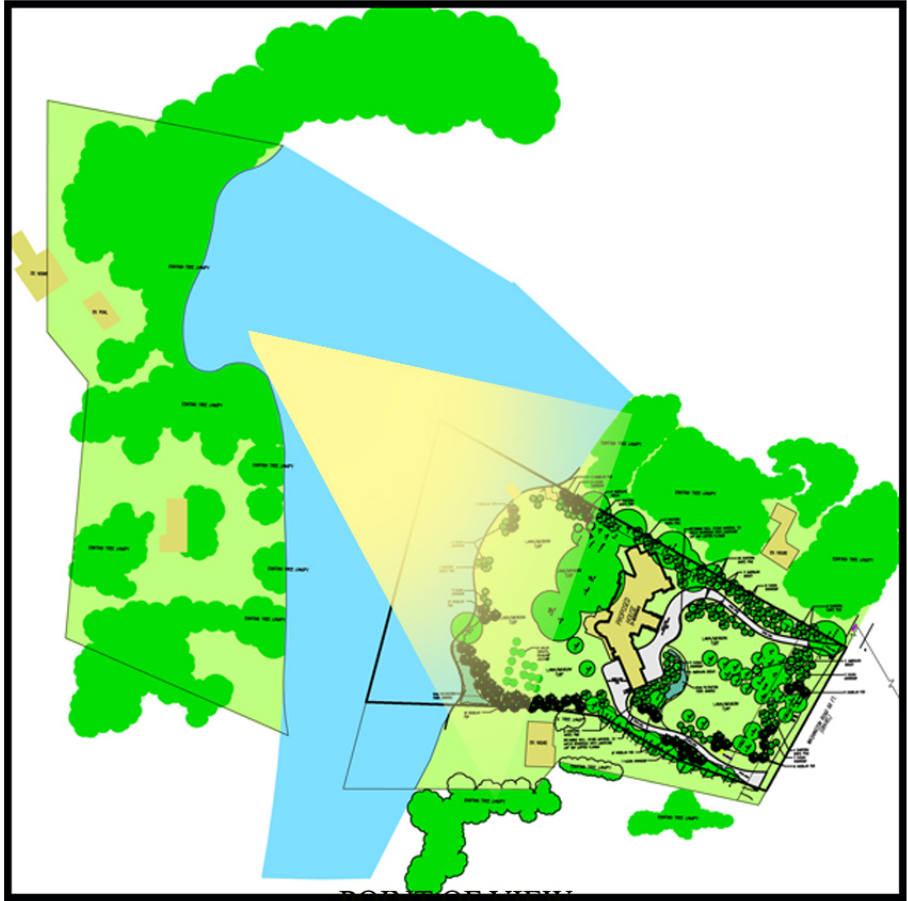
POINT OF VIEW



PROPOSED



EXISTING



POINT OF VIEW



PROPOSED