



Sara Roediger <roedigers@rochesterhills.org>

Fwd: Starbucks 1360 Walton Blvd - Restrict Left Out at Walton Blvd Option - CF#21-030 / RCOC PRELIMINARY PRELIMINARY PLAN REVIEW 21P0036

Paul Shumejko <shumejkop@rochesterhills.org>

Mon, Jun 6, 2022 at 3:15 PM

To: Sara Roediger <roedigers@rochesterhills.org>

Cc: Keith Depp <deppk@rochesterhills.org>, Kristen Kapelanski <kapelanskik@rochesterhills.org>, Ann Echols <echolsa@rochesterhills.org>, Walter Murphy <murphyw@rochesterhills.org>, lenzf@oakgov.com, Anna Mekoski <mekoskia@oakgov.com>, shimmelle@oakgov.com, "Yeiser, Russell M" <yeiserr@oakgov.com>, Paul Davis <davisp@rochesterhills.org>, Tracey Balint <balintt@rochesterhills.org>, Jason Boughton <boughtonj@rochesterhills.org>

Good Afternoon Sara,

I would echo the same concerns that RCOC has for this site. Before a final decision is made, not sure if RHFD or OCSO have any thoughts on this from a 1st responders standpoint?

In my view, the following would be the order of suggestions:

1. Do not permit this type of heavy drive thru use at this location.

- The site itself is very narrow and not deep, which is not ideal for a drive thru coffee shop.
- Vehicles may pack up into Walton Blvd especially if they are not pulling up as far as they can into the drive thru/parking lot. The stacking length is relatively short and only exacerbated the more that drivers don't pull up as far as they can to the car in front of them due to being on cell phones and not paying attention.
- The drive thru itself does not have a bypass lane so patrons parking to go inside will be competing with backing up vehicles when leaving the dining area.

2. Allow full access drive (assuming option 1 is not feasible)

- Not ideal due to the high AM peak use that will be competing with AM school traffic at Rochester High School.
- School and drive thru traffic will be competing for limited CLTL storage length and weaving in and out of the lane to get around staged vehicles.

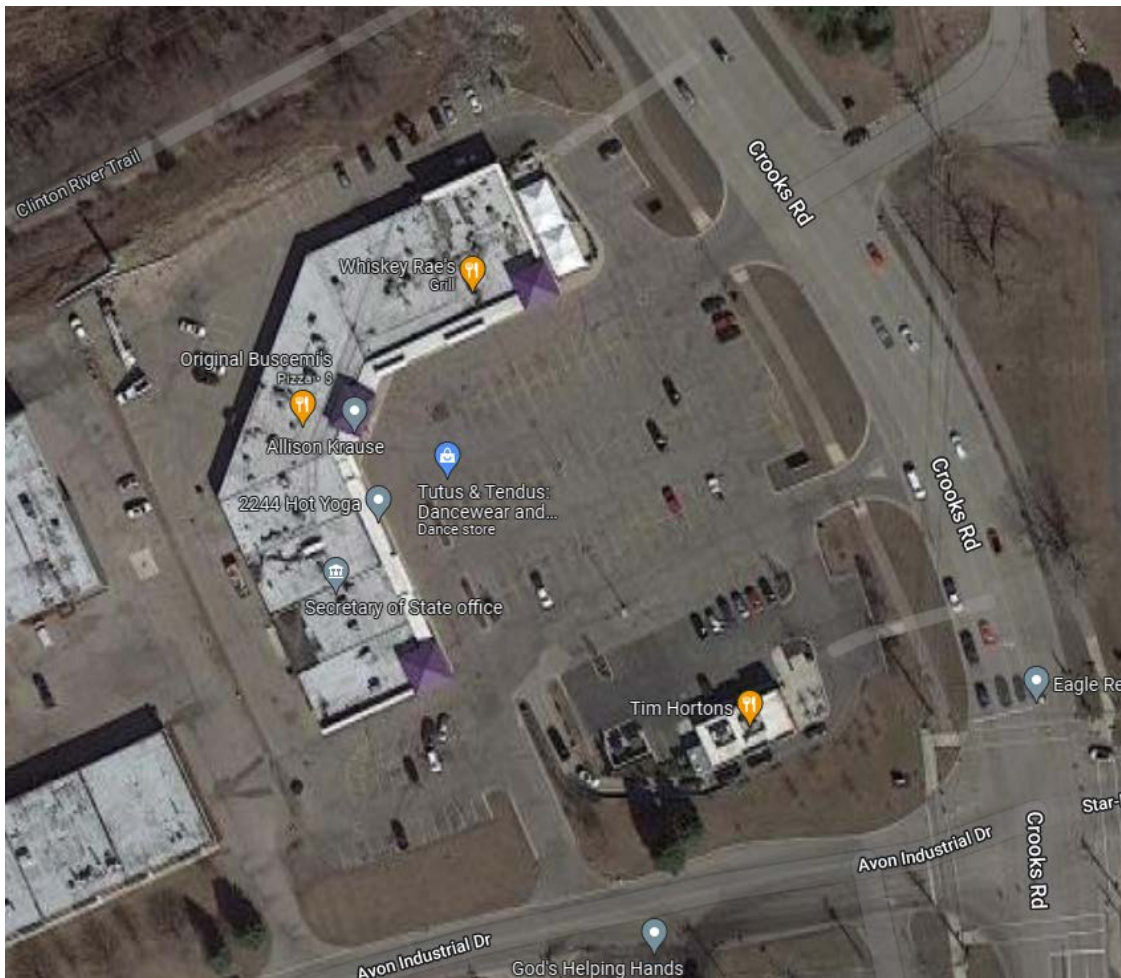
3. EB Walton Blvd Traffic restricted with NO Lefts out of the Driveway Approach

- The compliance rate for EB motorists to adhere to the NO RIGHT turn to exit the site onto Walton Blvd could be low.
- Would probably need a very low profile curb & gutter raised island to allow emergency vehicles easy access in and out of the site, which makes it more enticing to simply drive over it.
- Maintaining a high compliance rate will only be as good as OCSO ability to provide the necessary resources for adequate enforcement.
- As far as I recall, this would be the only commercial site in the City with a single drive approach to have turn movement restrictions. All the others have multiple access points.
- This may place an undue burden on Wendy's. Drivers that do comply with the turning restriction will most likely just head EB on Walton Blvd and turn into Wendys only to do a U-Turn to then head back west onto Walton Blvd to get to Starbucks.
- Drivers that are coming from the east are unlikely to drive head east past the dual lane x-over at Livernois Rd to then head back west onto Walton Blvd.

Keep in mind that this site only has 1 access entrance where the other locations with the pork-chops islands have multiple options for ingress/egress.

Existing Restricted Drive Examples.

Crooks Rd at Avon Industrial - 3 existing access points with 1 of them turn restricted. Delineators get hit repeatedly.



August 2018

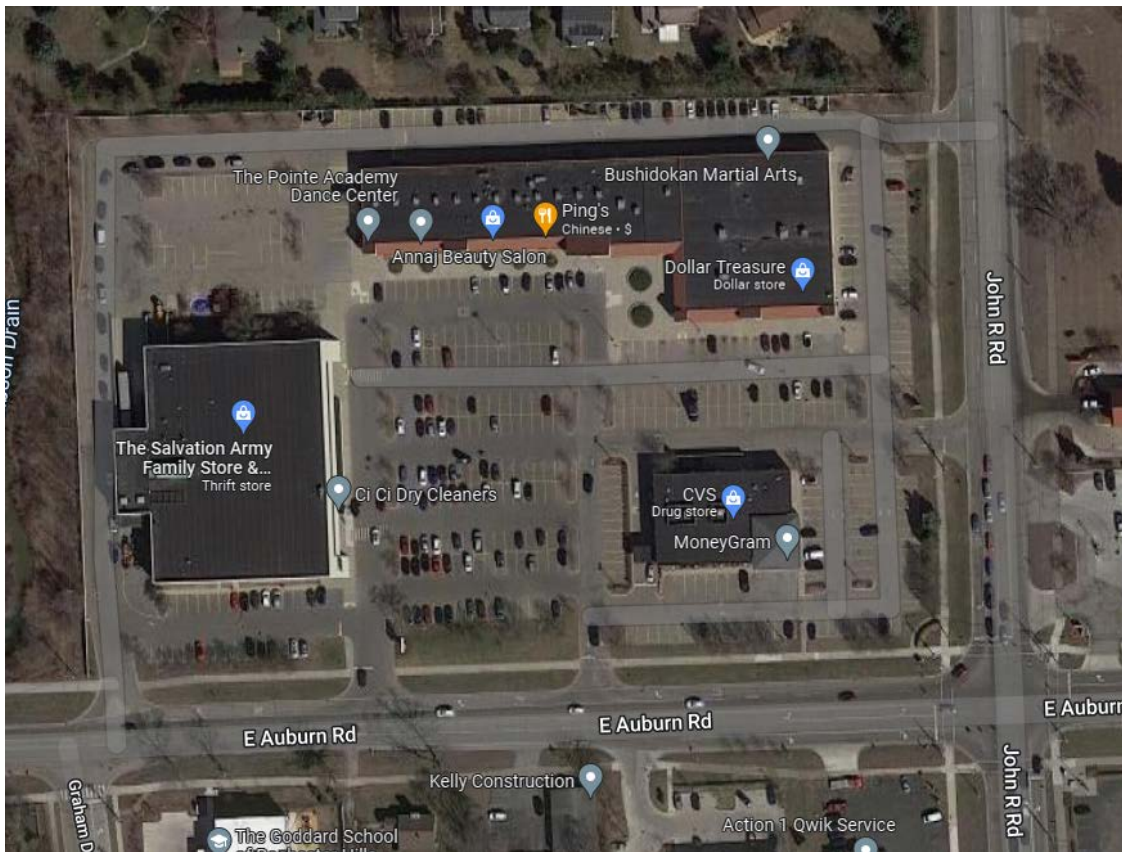


May 2019

July 2019



Auburn Rd at Salvation Army - 5 access points (we eventually gave up replacing the signs/delineators because they get hit so often)

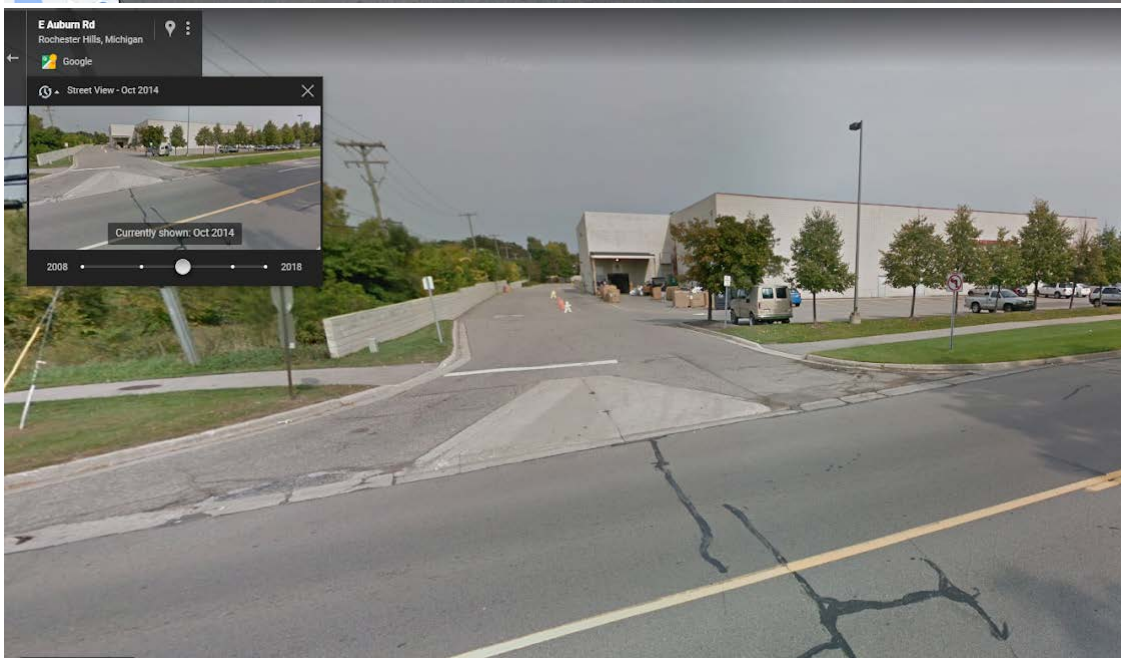
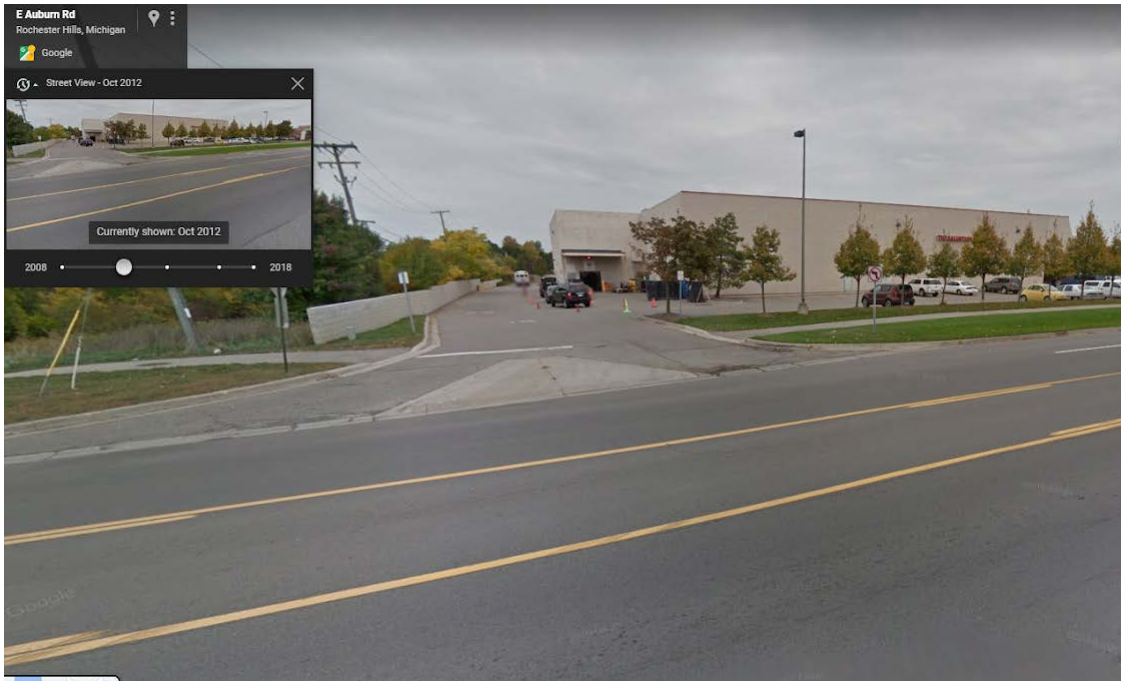


October 2008



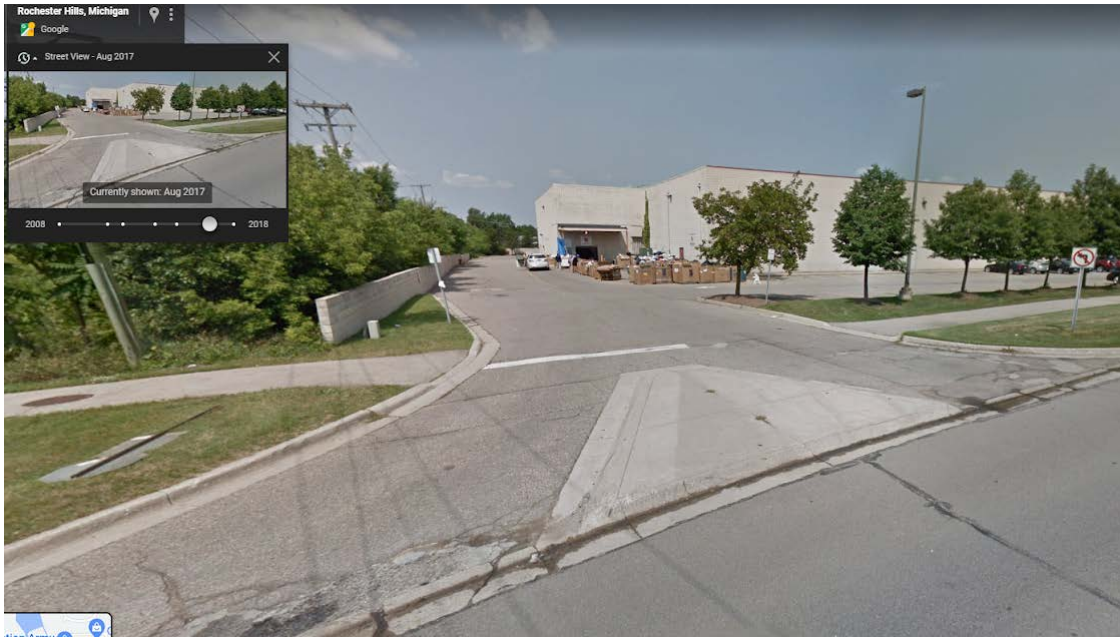
October 2012

October 2014

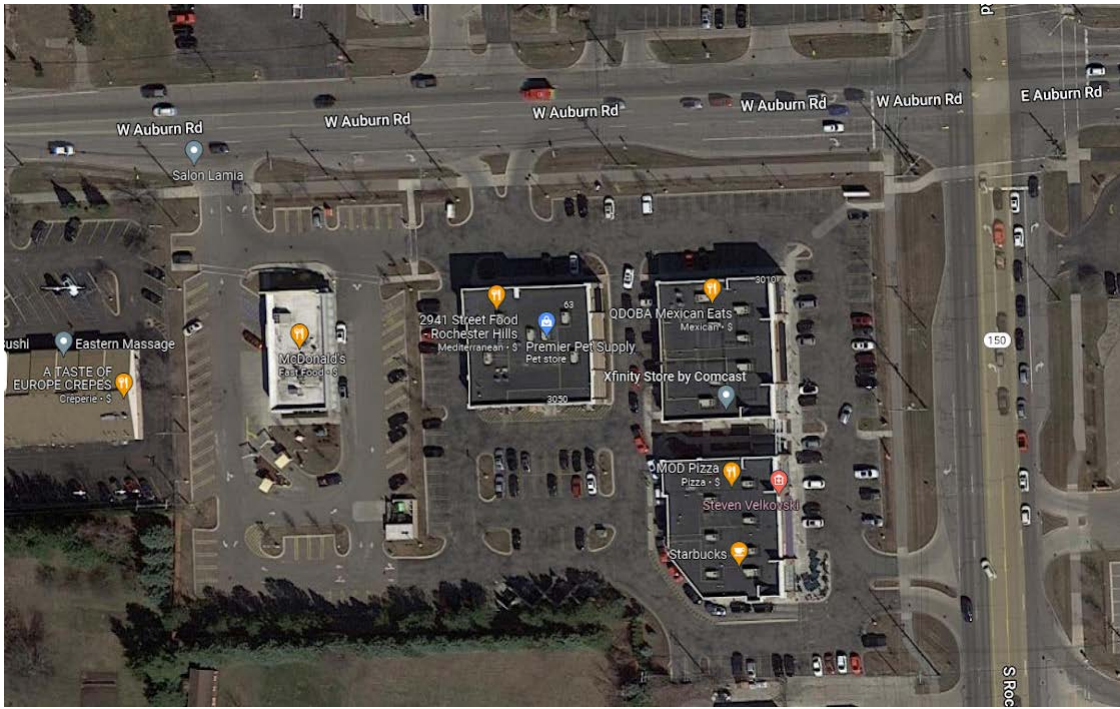


August 2017

September 2018

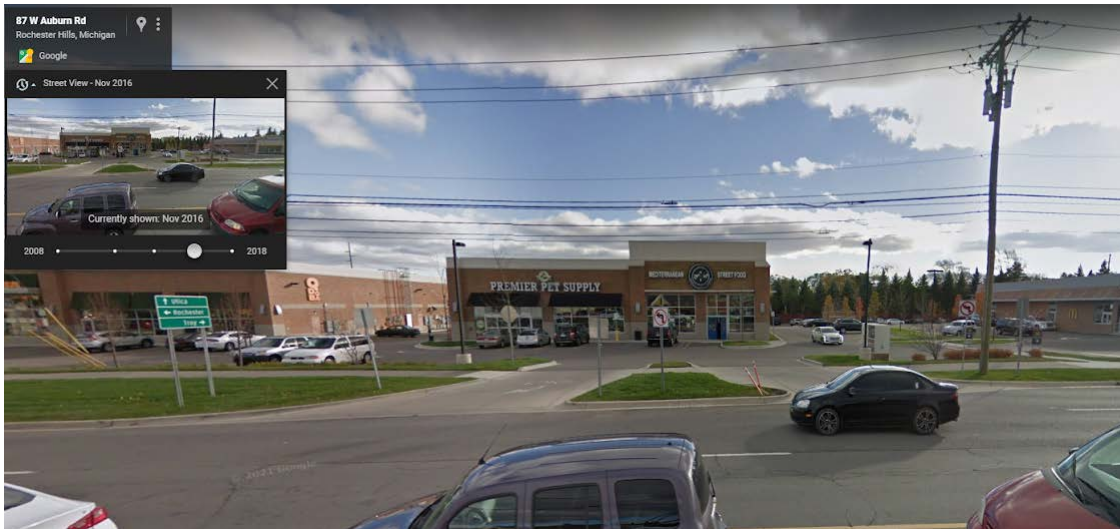


Auburn Rd at Rochester Rd - 4 access points



October 2014 (new construction)

November 2016



August 2018



Paul G. Shumejko, MBA, M.S., P.E., PTOE

Transportation Engineering Manager - DPS/ENG

City of Rochester Hills | 1000 Rochester Hills Drive | Rochester Hills, MI 48309

248.841.2489 (office) | shumejkop@rochesterhills.org | www.rochesterhills.org



[Quoted text hidden]

[Quoted text hidden]

[Quoted text hidden]

[Quoted text hidden]

Keith Depp

Project Engineer - DPS/Engineering Division

City of Rochester Hills | 1000 Rochester Hills Drive | Rochester Hills, MI 48309

248.841.2503 (office) | deppk@rochesterhills.org | www.rochesterhills.org

[Quoted text hidden]