

Figure 4. Natural Features Map - White Property

NE 1386 Rochester Hills Stewardship Project
 48.38-acre White Property
 Section 20 of Rochester Hills, Oakland, Co., MI
 Source: Rochester Hills GIS Dept
 Habitat Assessment: May 22, 2015
 Map Created: September 23, 2015



9436 Maltby Road, Brighton, MI 48116
 810.225.0539 office | 810.225.0653 fax

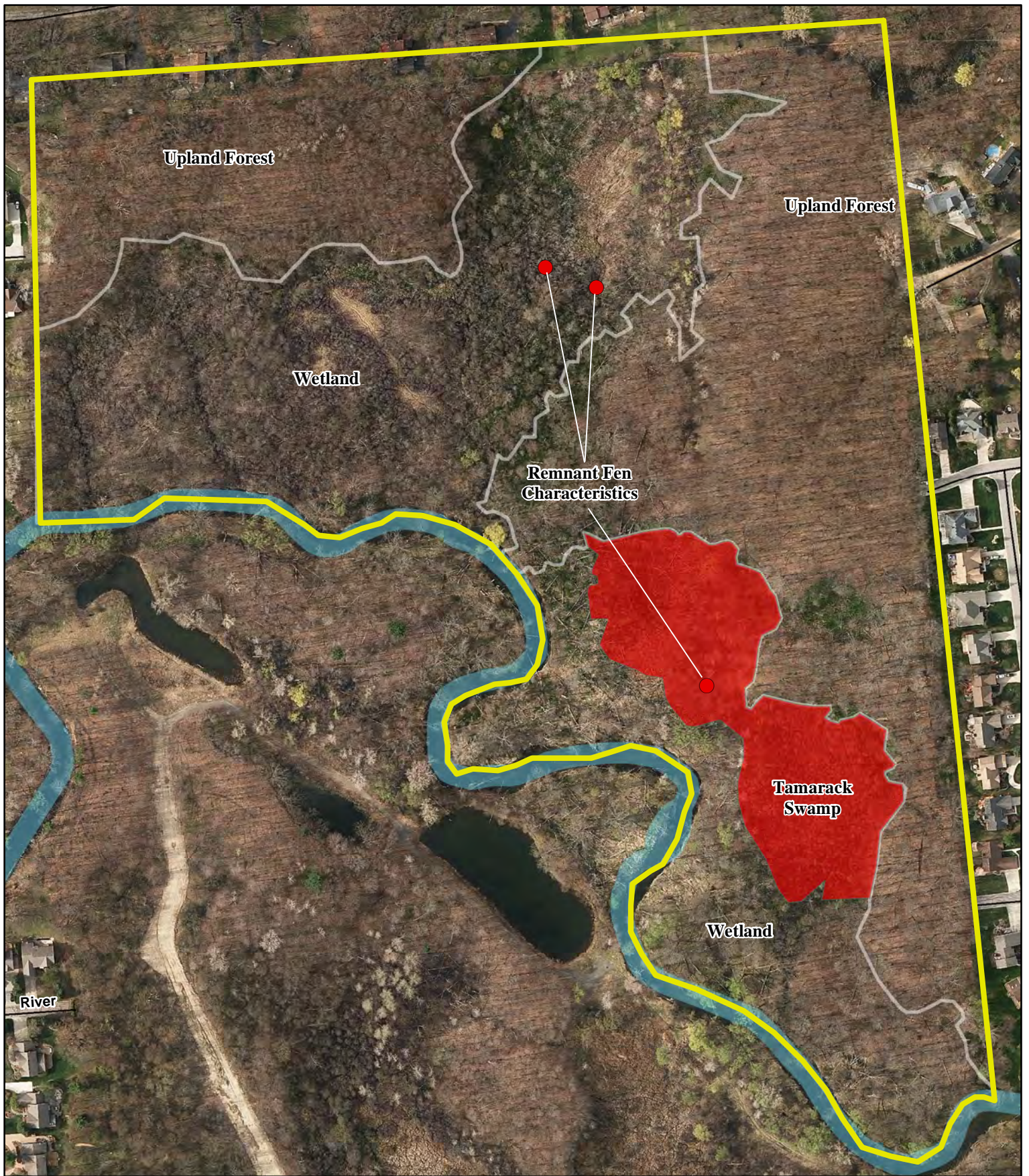
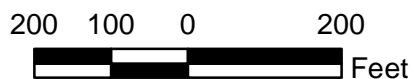


Figure 4a - White Property Remnant Fen and Tamarack Swamp Enhancement Map

NE 1386 Rochester Hills Stewardship Project
 48.38-acre White Property
 Section 20 of Rochester Hills, Oakland, Co., MI
 Source: Rochester Hills GIS Dept
 Habitat Assessment: May 22, 2015
 Map Created: September 23, 2015



NISWANDER ENVIRONMENTAL
 9436 Maltby Road, Brighton, MI 48116
 810.225.0539 office | 810.225.0653 fax

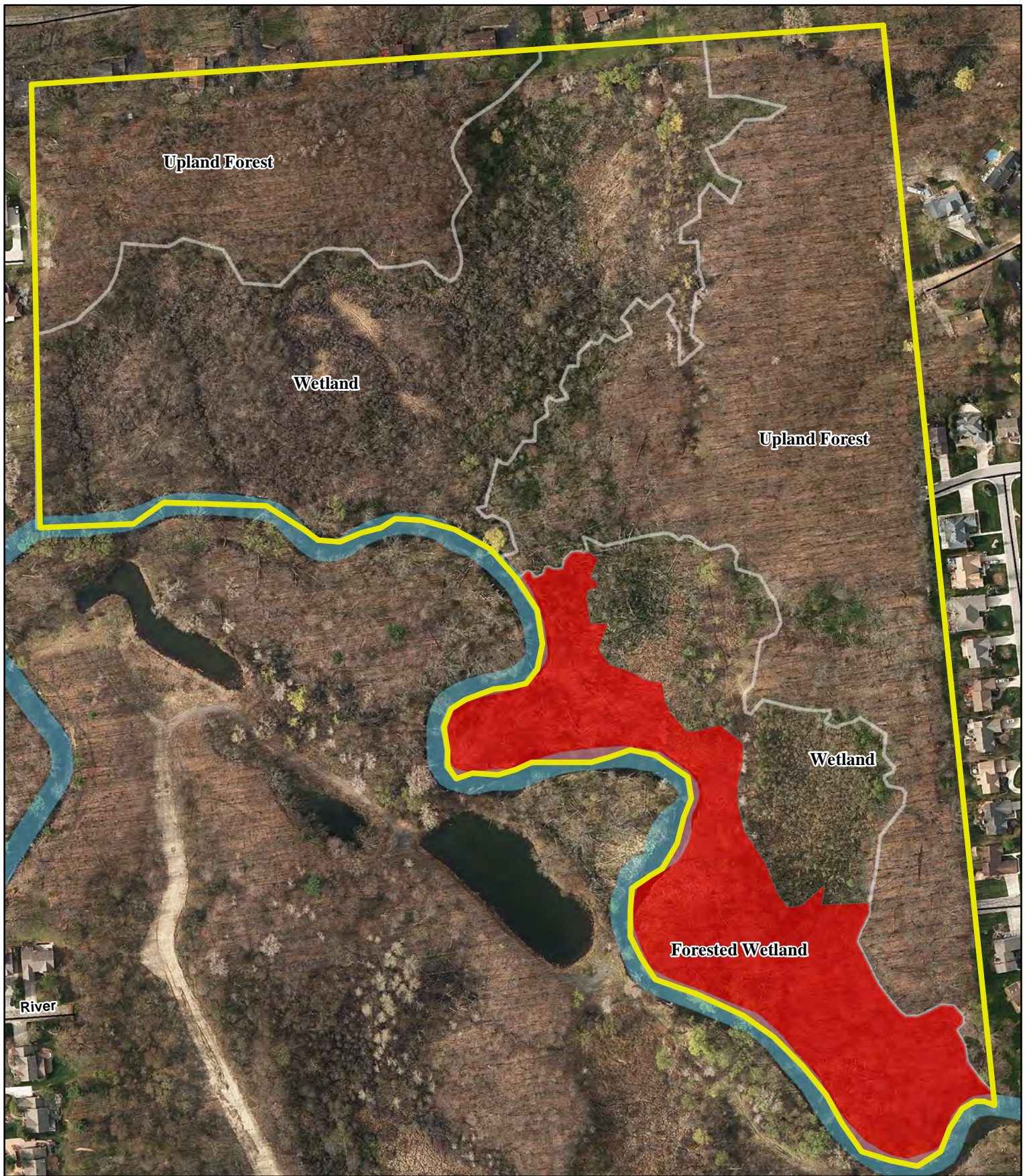


Figure 4b - White Property Forested Wetland Enhancement Map

NE 1386 Rochester Hills Stewardship Project
 48.38-acre White Property
 Section 20 of Rochester Hills, Oakland, Co., MI
 Source: Rochester Hills GIS Dept
 Habitat Assessment: May 22, 2015
 Map Created: September 23, 2015



9436 Maltby Road, Brighton, MI 48116
 810.225.0539 office | 810.225.0653 fax

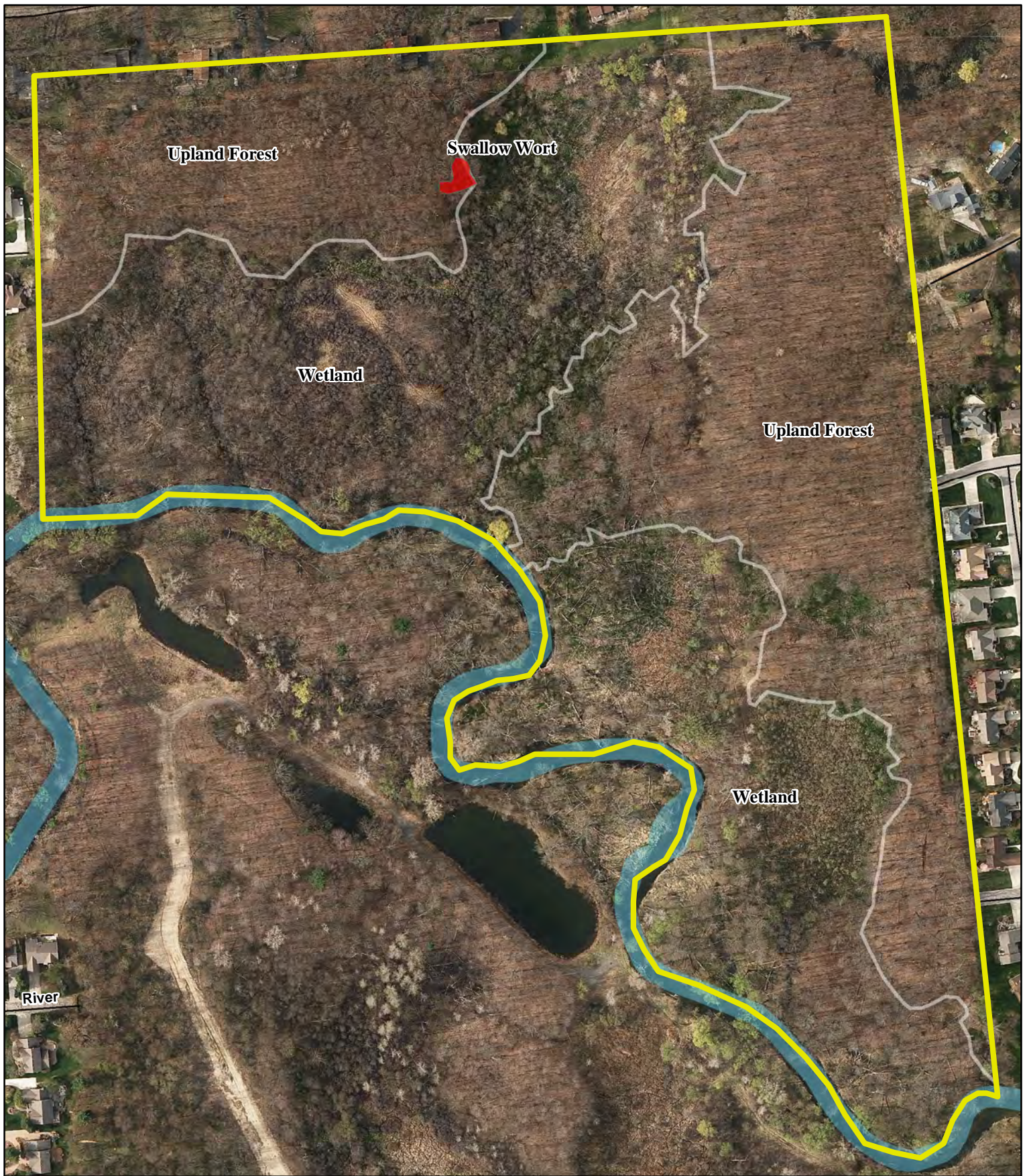


Figure 4c - White Property Swallow Wort Control Map

NE 1386 Rochester Hills Stewardship Project
 48.38-acre White Property
 Section 20 of Rochester Hills, Oakland, Co., MI
 Source: Rochester Hills GIS Dept
 Habitat Assessment: May 22, 2015
 Map Created: September 23, 2015



9436 Maltby Road, Brighton, MI 48116
 810.225.0539 office | 810.225.0653 fax

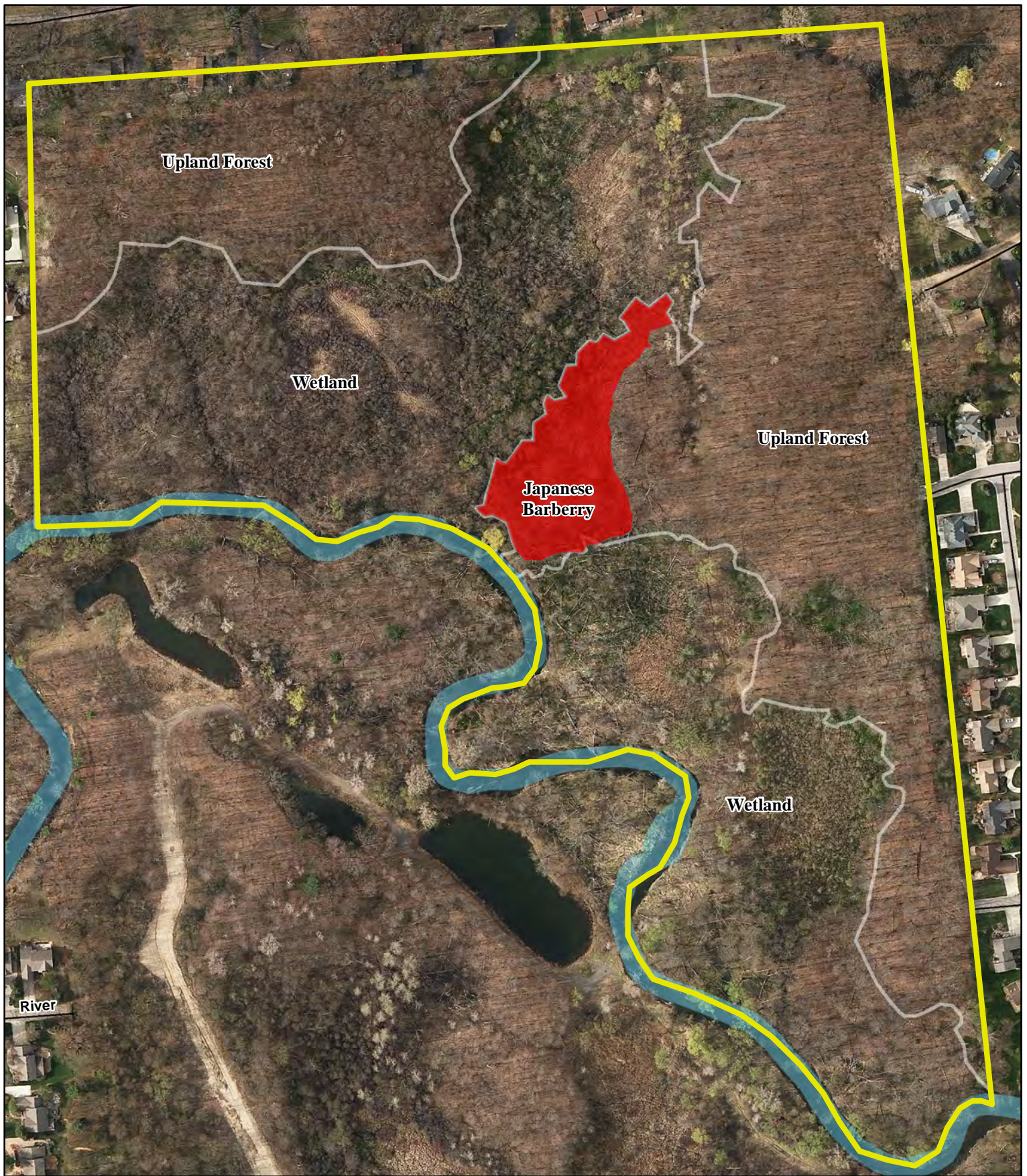


Figure 4d - White Property Barberry Control Map

NE 1386 Rochester Hills Stewardship Project
 48.38-acre White Property
 Section 20 of Rochester Hills, Oakland, Co., MI
 Source: Rochester Hills GIS Dept
 Habitat Assessment: May 22, 2015
 Map Created: September 23, 2015



9436 Maltby Road, Brighton, MI 48116
 810.225.0539 office | 810.225.0653 fax

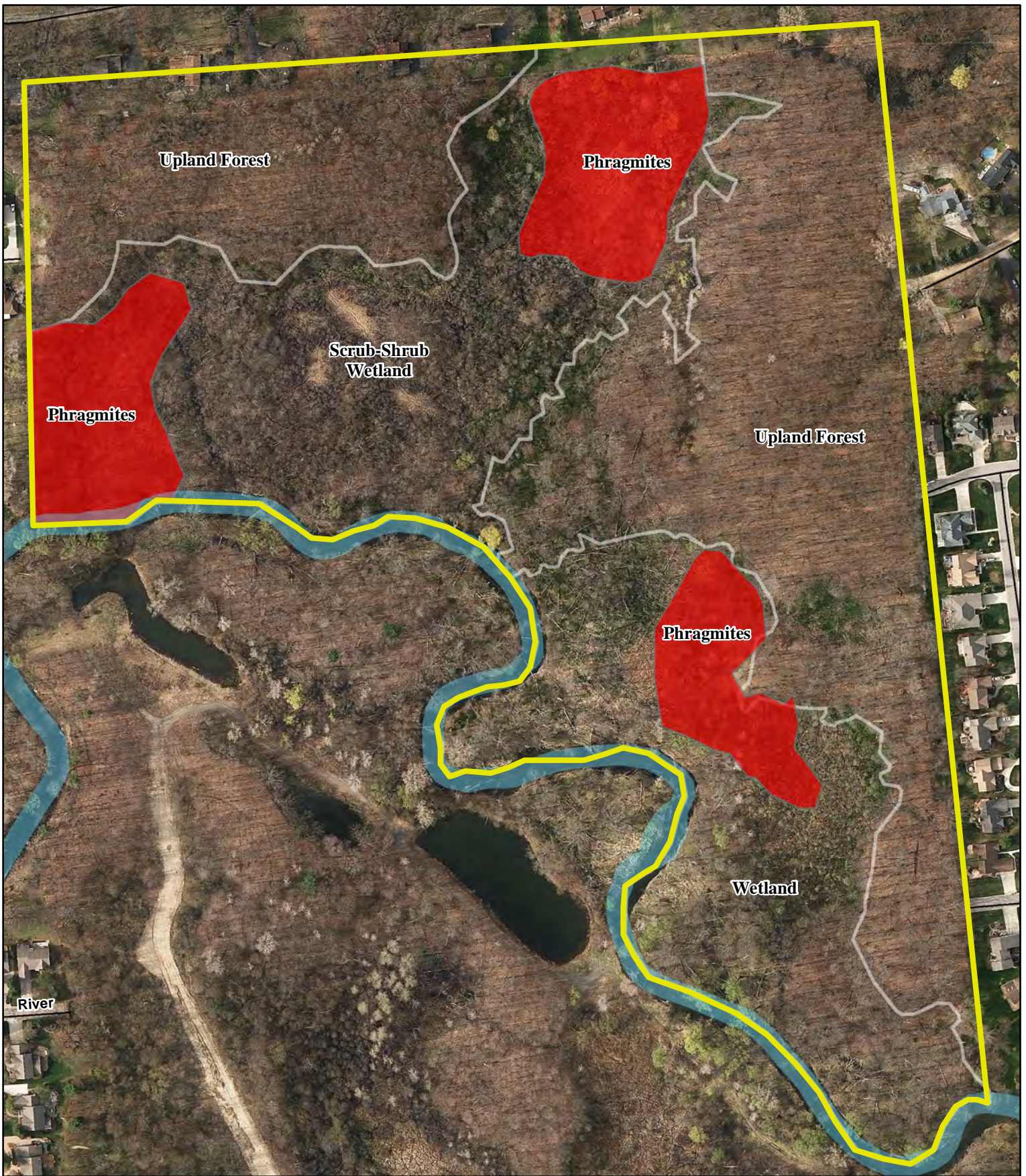


Figure 4e - White Property Scrub-Shrub Wetland Enhancement Map

NE 1386 Rochester Hills Stewardship Project
 48.38-acre White Property
 Section 20 of Rochester Hills, Oakland, Co., MI
 Source: Rochester Hills GIS Dept
 Habitat Assessment: May 22, 2015
 Map Created: September 23, 2015



9436 Maltby Road, Brighton, MI 48116
 810.225.0539 office | 810.225.0653 fax

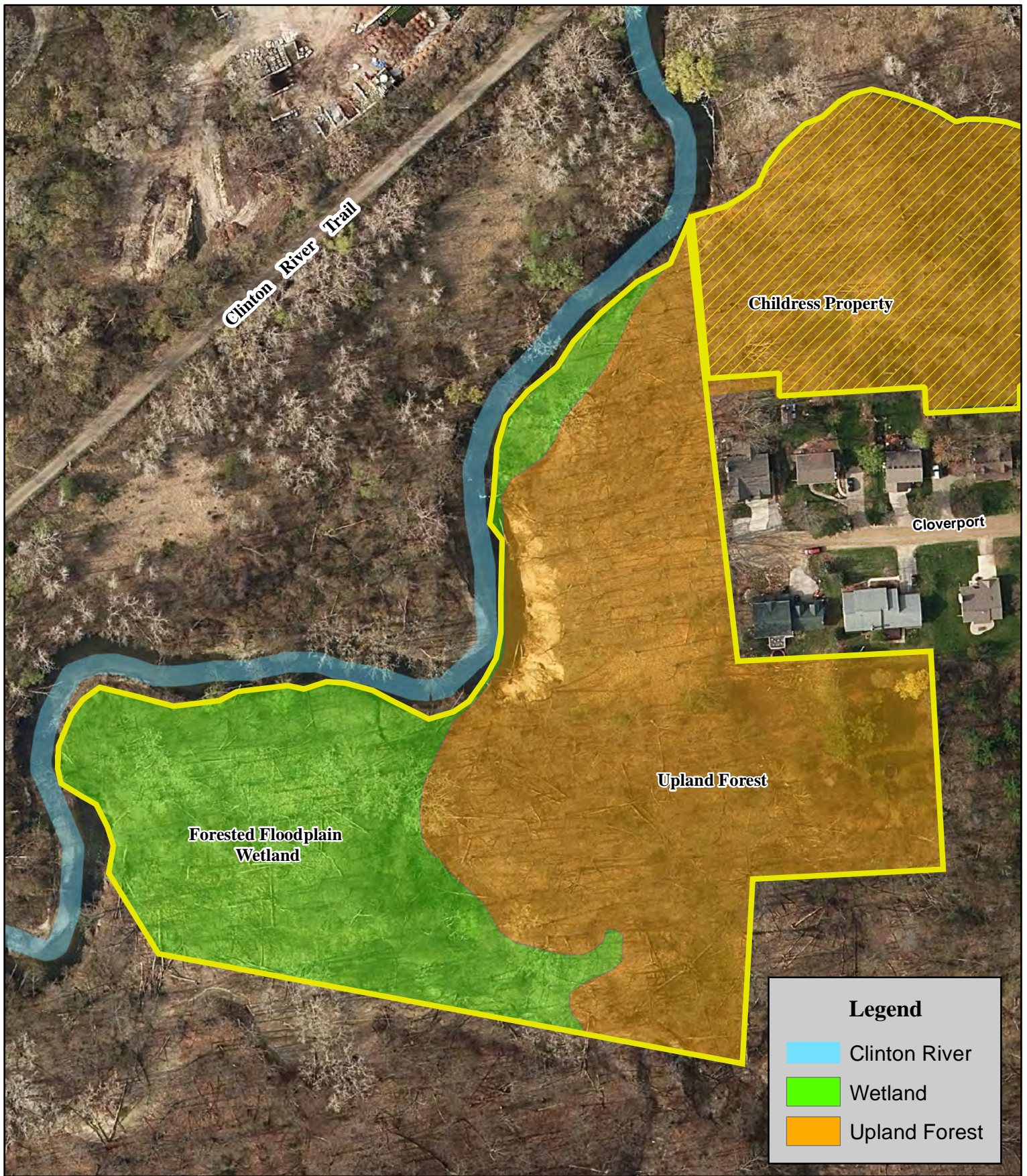
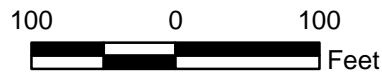


Figure 5. Natural Features Map - Cloverport Property

NE 1386 Rochester Hills Stewardship Project
 7.42-acre Cloverport Property
 Section 15 of Rochester Hills, Oakland, Co., MI
 Source: Rochester Hills GIS Dept
 Habitat Assessment: May 12, 2015
 Map Created: September 22, 2015

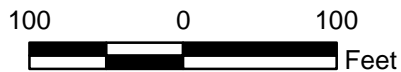


9436 Maltby Road, Brighton, MI 48116
 810.225.0539 office | 810.225.0653 fax



Figure 5a - Cloverport Property Sediment Control Map

NE 1386 Rochester Hills Stewardship Project
 7.42-acre Cloverport Property
 Section 15 of Rochester Hills, Oakland, Co., MI
 Source: Rochester Hills GIS Dept
 Habitat Assessment: May 12, 2015
 Map Created: September 22, 2015



NISWANDER ENVIRONMENTAL
 9436 Maltby Road, Brighton, MI 48116
 810.225.0539 office | 810.225.0653 fax



Figure 5b - Cloverport Property Bank Restoration Map

NE 1386 Rochester Hills Stewardship Project
 7.42-acre Cloverport Property
 Section 15 of Rochester Hills, Oakland, Co., MI
 Source: Rochester Hills GIS Dept
 Habitat Assessment: May 12, 2015
 Map Created: September 22, 2015



NISWANDER ENVIRONMENTAL
 9436 Maltby Road, Brighton, MI 48116
 810.225.0539 office | 810.225.0653 fax



Figure 5c - Cloverport Property Phragmites Control Map

NE 1386 Rochester Hills Stewardship Project
 7.42-acre Cloverport Property
 Section 15 of Rochester Hills, Oakland, Co., MI
 Source: Rochester Hills GIS Dept
 Habitat Assessment: May 12, 2015
 Map Created: September 22, 2015

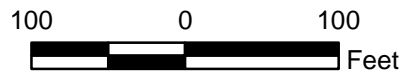


NISWANDER ENVIRONMENTAL
 9436 Maltby Road, Brighton, MI 48116
 810.225.0539 office | 810.225.0653 fax



Figure 5d - Cloverport Property Garlic Mustard Control Map

NE 1386 Rochester Hills Stewardship Project
 7.42-acre Cloverport Property
 Section 15 of Rochester Hills, Oakland, Co., MI
 Source: Rochester Hills GIS Dept
 Habitat Assessment: May 12, 2015
 Map Created: September 22, 2015



NISWANDER ENVIRONMENTAL
 9436 Maltby Road, Brighton, MI 48116
 810.225.0539 office | 810.225.0653 fax

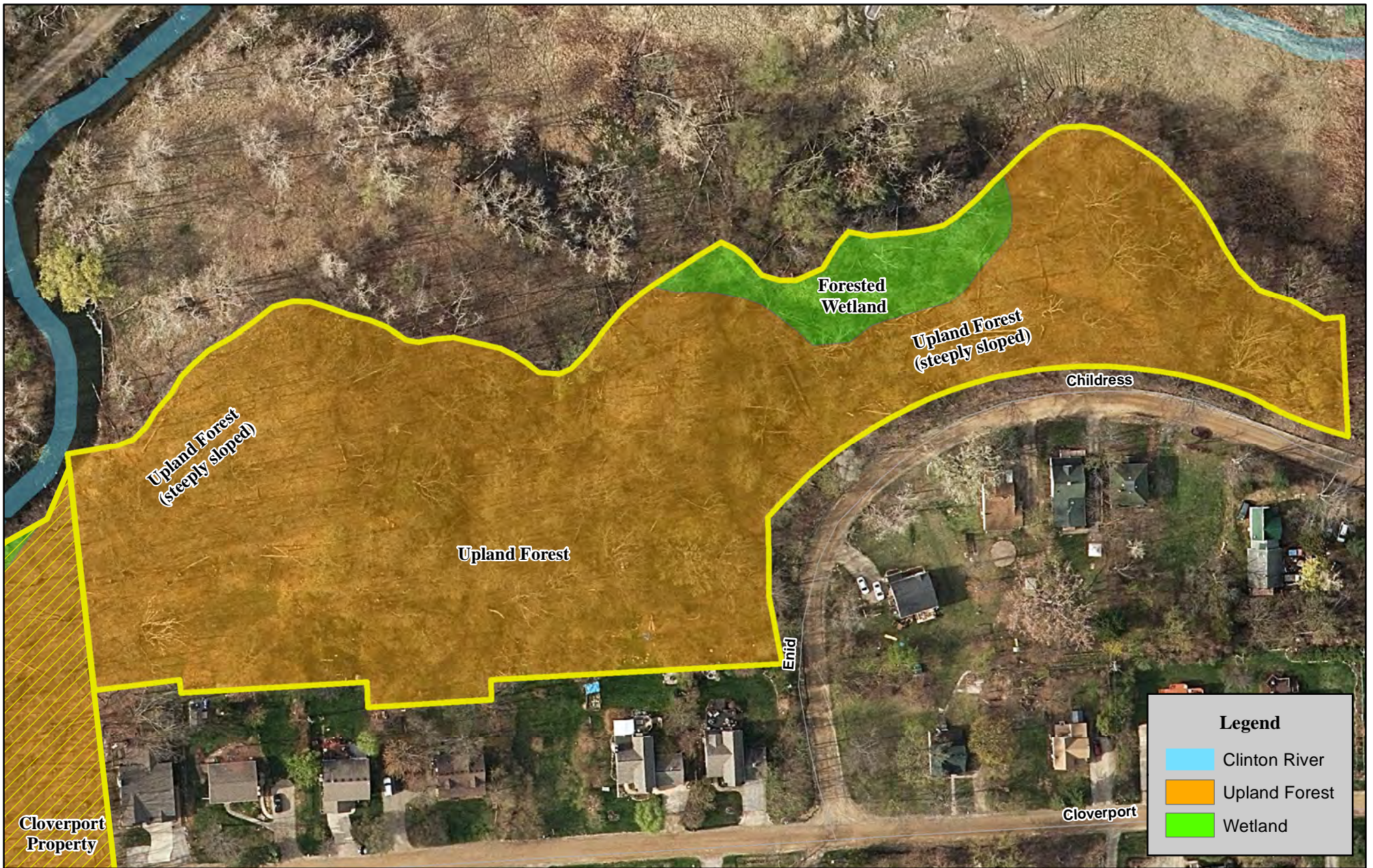
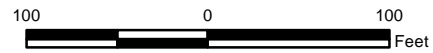


Figure 6. Natural Features Map - Childress Property

NE 1386 City of Rochester Hills Stewardship Project
 5.31-acre Childress Property
 Section 15 of Rochester Hills, Oakland, Co., MI
 Source: Rochester Hills GIS Dept
 Habitat Assessment: May 12, 2015
 Map Created: September 21, 2015



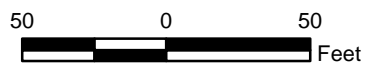

NISWANDER
ENVIRONMENTAL

9436 Maltby Road, Brighton, MI 48116
 810.225.0539 office | 810.225.0653 fax



Figure 7. Natural Features Map - Rivercrest Property

NE 1386 City of Rochester Hills Stewardship Project
 1.74-acre Rivercrest Property
 Section 15 of Rochester Hills, Oakland, Co., MI
 Source: Rochester Hills GIS Dept
 Habitat Assessment: May 12, 2015
 Map Created: September 22, 2015



NISWANDER ENVIRONMENTAL
 9436 Maltby Road, Brighton, MI 48116
 810.225.0539 office | 810.225.0653 fax



Figure 7a - Rivercrest Property Shoreline Restoration Map

NE 1386 City of Rochester Hills Stewardship Project
 1.74-acre Rivercrest Property
 Section 15 of Rochester Hills, Oakland, Co., MI
 Source: Rochester Hills GIS Dept
 Habitat Assessment: May 12, 2015
 Map Created: September 22, 2015



9436 Maltby Road, Brighton, MI 48116
 810.225.0539 office | 810.225.0653 fax



Figure 7b - Rivercrest Property Woody Species Control Map

NE 1386 City of Rochester Hills Stewardship Project
 1.74-acre Rivercrest Property
 Section 15 of Rochester Hills, Oakland, Co., MI
 Source: Rochester Hills GIS Dept
 Habitat Assessment: May 12, 2015
 Map Created: September 22, 2015



9436 Maltby Road, Brighton, MI 48116
 810.225.0539 office | 810.225.0653 fax



Figure 8. Natural Features Map - Clear Creek Parcels

NE 1386 City of Rochester Hills Stewardship Project
 23.68 Acre Clear Creek Parcels
 Section 2 of Rochester Hills, Oakland, Co., MI
 Source: Rochester Hills GIS Dept
 Habitat Assessment: May 7, 2015
 Map Created: September 24, 2015



NISWANDER
 ENVIRONMENTAL

9436 Maltby Road, Brighton, MI 48116
 810.225.0539 office | 810.225.0653 fax

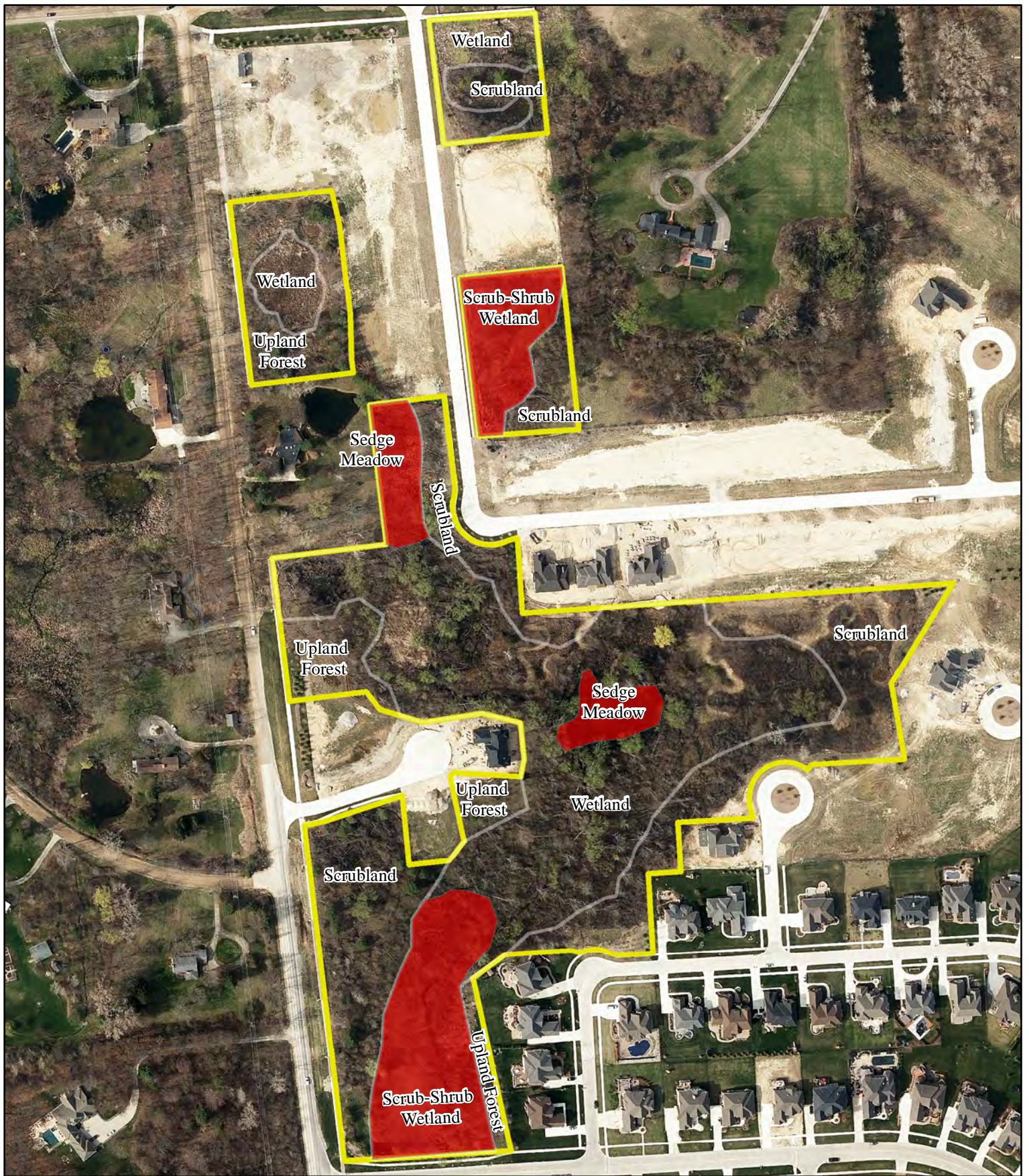


Figure 8a - Scrub-Shrub Wetland and Sedge Meadow Enhancement Map

NE 1386 City of Rochester Hills Stewardship Project
 23.68 Acre Clear Creek Parcels
 Section 2 of Rochester Hills, Oakland, Co., MI
 Source: Rochester Hills GIS Dept
 Habitat Assessment: May 7, 2015
 Map Created: September 24, 2015



	NISWANDER ENVIRONMENTAL	9436 Maltby Road, Brighton, MI 48116
		810.225.0539 office 810.225.0653 fax

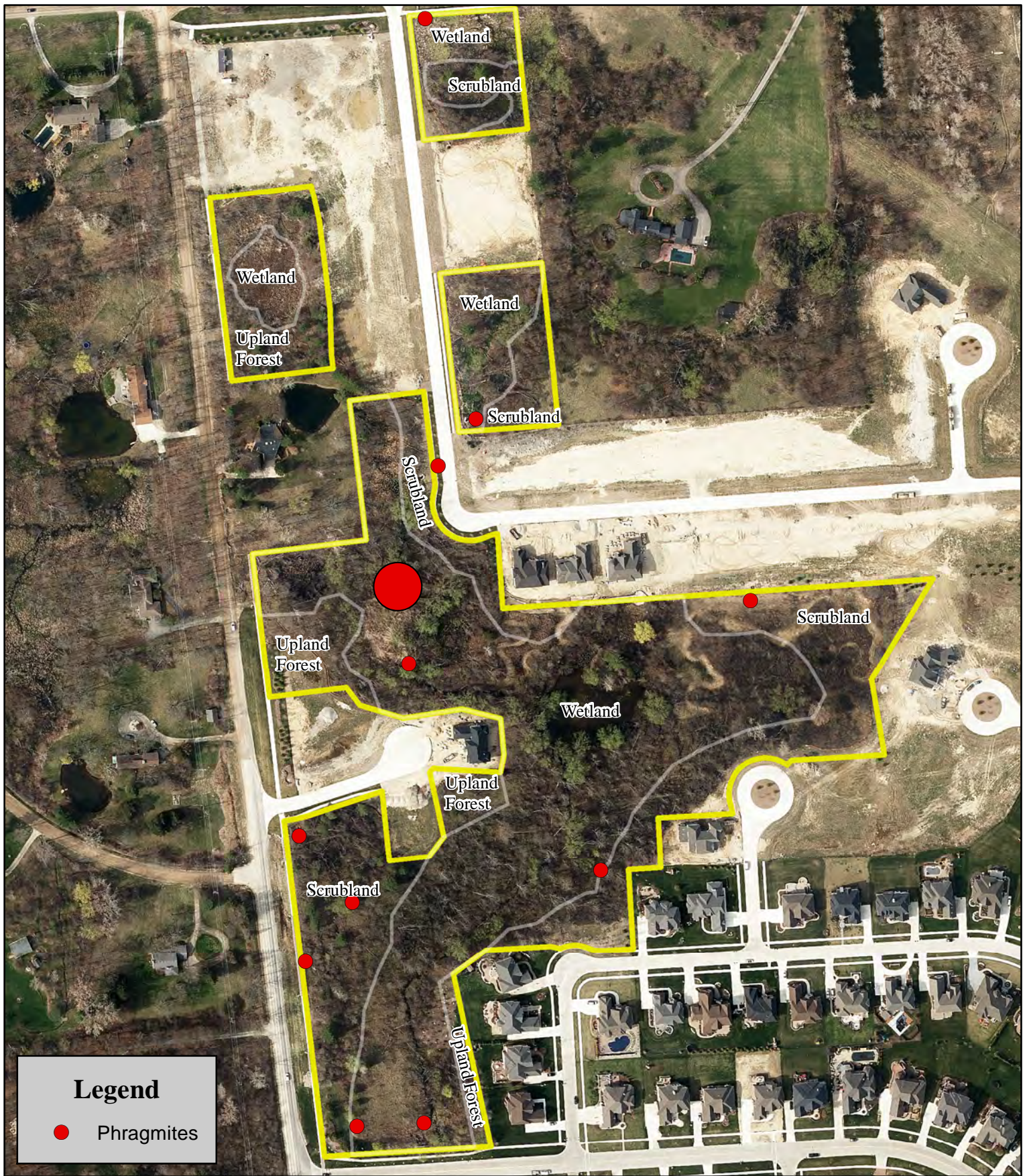


Figure 8b - Clear Creek Parcels Phragmites Control Map

NE 1386 City of Rochester Hills Stewardship Project
 23.68 Acre Clear Creek Parcels
 Section 2 of Rochester Hills, Oakland, Co., MI
 Source: Rochester Hills GIS Dept
 Habitat Assessment: May 7, 2015
 Map Created: September 24, 2015

250 0 250
 Feet



9436 Maltby Road, Brighton, MI 48116
 810.225.0539 office | 810.225.0653 fax