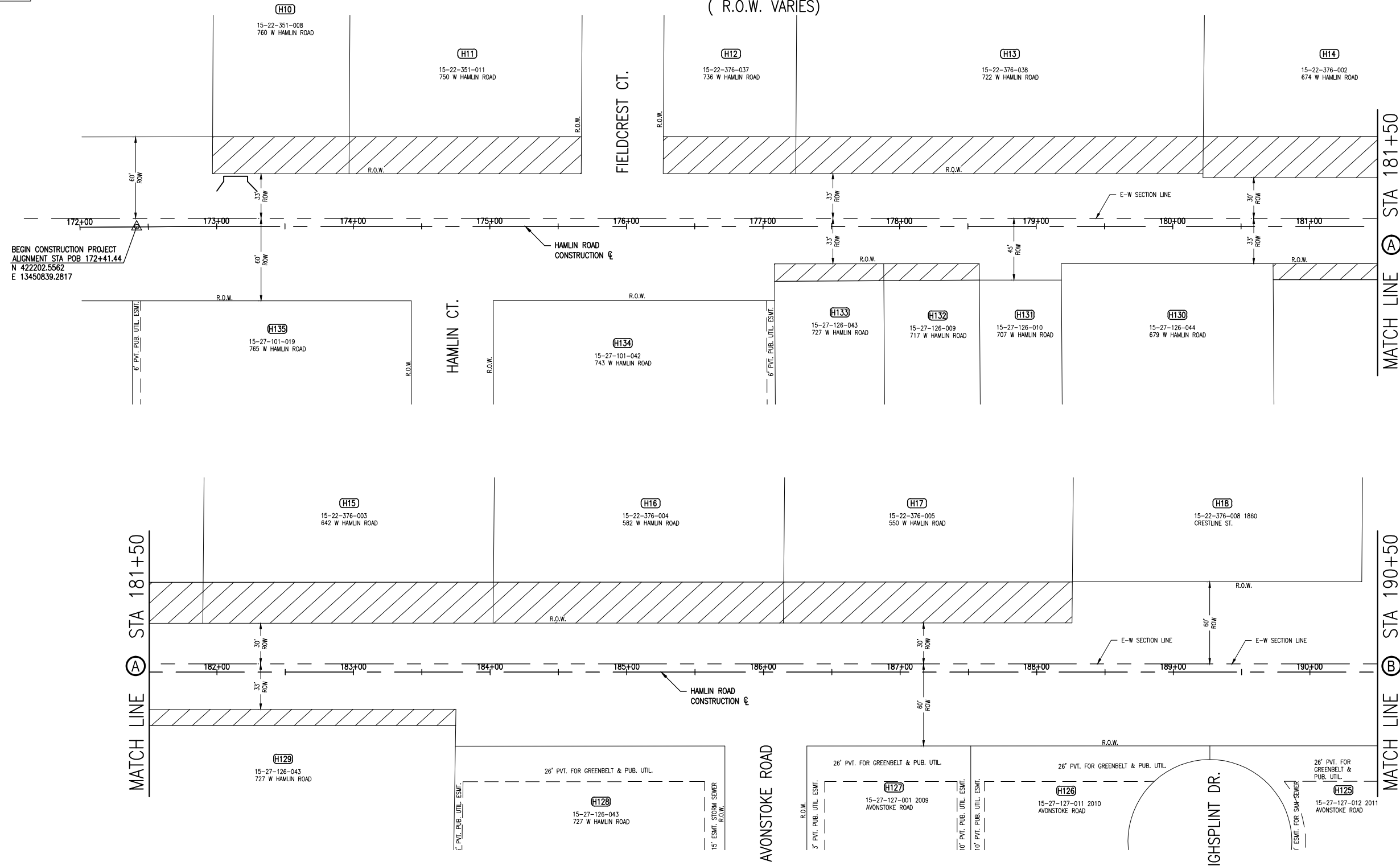


BENCHMARK #200
N 422220.82
E 1345069.82 ELEV 845.271
TRAVERSE POINT #100
N 422234.78
E 13450773.60 ELEV 844.69
TRAVERSE POINT #101
N 422213.06
E 13451599.58 ELEV 857.02
BENCHMARK #201
N 422222.72
E 13451672.28 ELEV 856.969
TRAVERSE POINT #102
N 422245.55
E 13452405.42 ELEV 847.52
BENCHMARK #202
N 422238.55
E 13452514.50 ELEV 845.787

HAMLIN ROAD (R.O.W. VARIES)



BEGIN CONSTRUCTION PROJECT
ALIGNMENT STA POB 172+41.44
N 422202.5562
E 13450839.2817

LEGEND

	PROPOSED HIGHWAY EASEMENT
	PROPOSED TEMPORARY GRADING EASEMENT
	PROPOSED PERMANENT PATHWAY EASEMENT

NOTE: SEE CONSTRUCTION SHEETS FOR STATIONS
OF ROW LIMITS.



VERT DATUM	Value
HORIZ DATUM	Value
SCALE	V: N/A H: 1"=40'
CITY/TOWNSHIP	CITY OF ROCHESTER HILLS
COUNTY	OAKLAND COUNTY
TOWN	RANGE T.3N. R.11E.
SECTION	22-27
PROJ/MR	ML
ENG/ARCH	ES
DATE	KB
CLIENT	CITY OF ROCHESTER HILLS
JOB #	0190130010
REVISIONS	
WWW	WWW.OHM-ADVISORS.COM
ADDRESS	34000 Plymouth Road Livonia, MI 48150 P (734) 522-6711 F (734) 522-6427

**HAMLIN ROAD
REHABILITATION
ROW VICINITY MAP**
STA. POB 172+41.44 TO STA. 190+50

SHEET
12
OF ##



DRAWING PATH: P:\4000_4100_Livonia\0190130010_Hamlin_Rd_Phase_1\11dwg\1130010RC01.dwg Feb 14, 2014 - 12:04pm

BENCHMARK #202	N 42238.55	E 13452514.50	ELEV 845.787
TRAVERSE POINT #103	N 422345.77	E 13453238.56	ELEV 835.65
BENCHMARK #203	N 422278.74	E 13452889.53	ELEV 841.679
BENCHMARK #204	N 422301.46	E 13453976.57	ELEV 822.740
TRAVERSE POINT #104	N 422307.92	E 13453877.76	ELEV 824.75
BENCHMARK #205	N 422326.25	E 13454633.06	ELEV 810.227

HAMLIN ROAD

(90' R.O.W.)



LEGEND

	PROPOSED HIGHWAY EASEMENT
	PROPOSED TEMPORARY GRADING EASEMENT
	PROPOSED PERMANENT PATHWAY EASEMENT

NOTE: SEE CONSTRUCTION SHEETS FOR STATIONS OF ROW LIMITS.



DATE	CADD	ENG/ARCH	PROJ/MGR	SECTION	TOWN	RANGE	COUNTY	CITY/VIL/LAC/TOWNSHIP	SCALE	VERT DATUM	
	KB	ES	ML	22-27	T.3N.	R.11E.	OAKLAND COUNTY	CITY OF ROCHESTER HILLS	H: 1"=40'	V: N/A	
CITY OF ROCHESTER HILLS									JOB #	0190130010	
34000 Plymouth Road Livonia, MI 48150 P (734) 522-6711 F (734) 522-6427									WWW.OHM-ADVISORS.COM		
COPYRIGHT 2012 OHM. ALL DRAWINGS AND WRITTEN MATERIALS APPEARING HEREIN CONSTITUTE THE ORIGINAL AND UNPUBLISHED WORK OF OHM AND THE SAME MAY NOT BE REPRODUCED, DISTRIBUTED, OR DISCLOSED WITHOUT PRIOR WRITTEN CONSENT OF OHM.											

HAMLIN ROAD REHABILITATION ROW VICINITY MAP
STA. 190+50 TO STA. 208+50

SHEET **13** OF ##

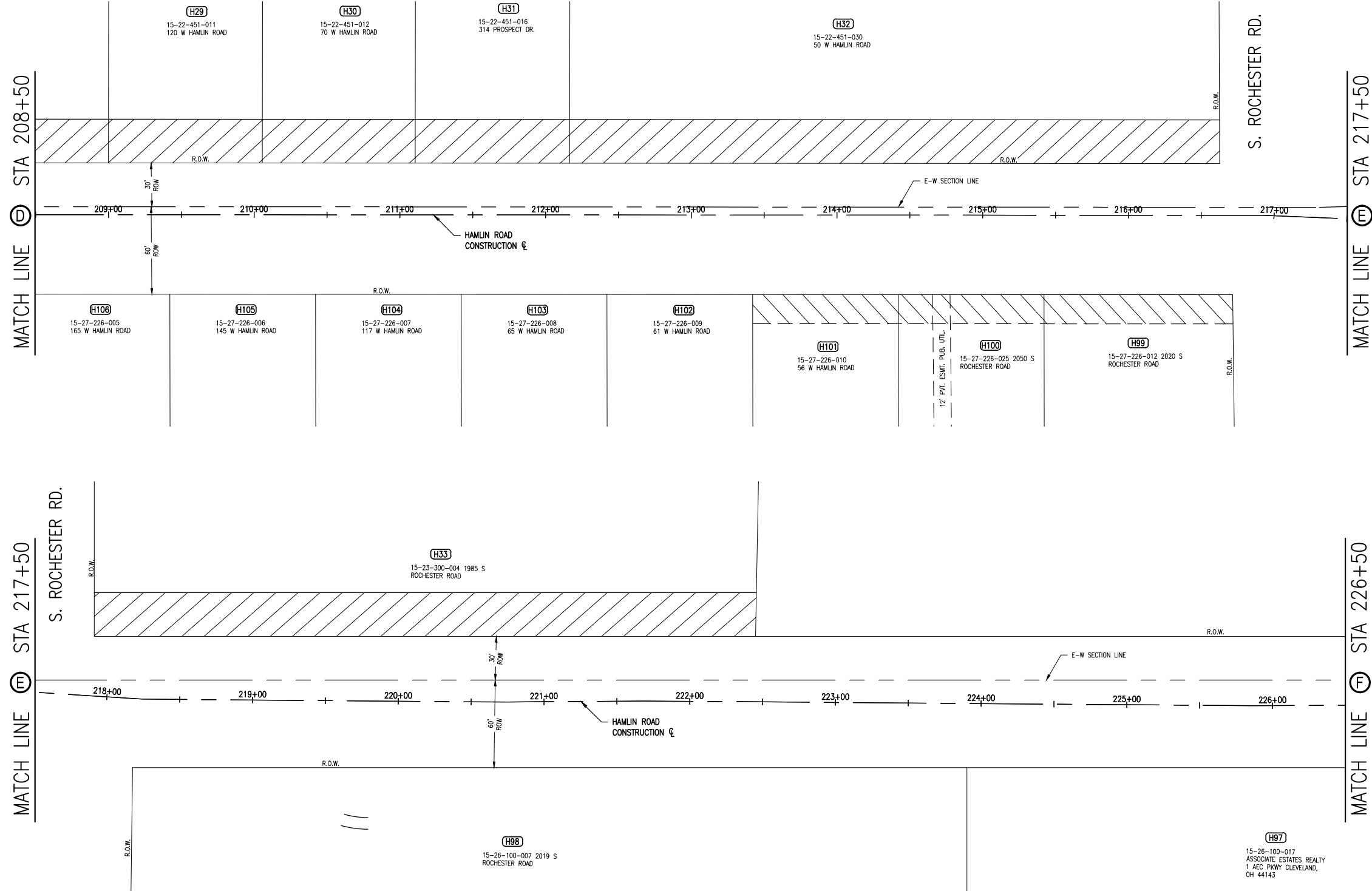


DRAWING PATH: P:\4000_4100_Livonia\0190130010\Hamlin_Rd_Phase_1\dwg\Misc\130010RCOW1.dwg Feb 14, 2014 - 12:04pm

BENCHMARK #205
N 422326.25
E 13454633.06 ELEV 810.227
TRAVERSE POINT #105
N 422348.00
E 13454583.41 ELEV 810.06
TRAVERSE POINT #106
N 422451.19
E 13455215.26 ELEV 800.43
BENCHMARK #206
N 422431.89
E 13455240.20 ELEV 800.015
TRAVERSE POINT #107
N 422375.76
E 13455627.61 ELEV 793.28
BENCHMARK #207
N 422370.62
E 13455569.63 ELEV 794.908

HAMLIN ROAD

(90' R.O.W.)



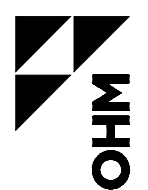
DRAWING PATH: P:\4000_4100_Livonia\0190130010_Hamlin_Rd_Phase_1\dwg\Misc\130010RCOV1.dwg Feb 14, 2014 - 12:05pm

- LEGEND**
- PROPOSED HIGHWAY EASEMENT
 - PROPOSED TEMPORARY GRADING EASEMENT
 - PROPOSED PERMANENT PATHWAY EASEMENT

NOTE: SEE CONSTRUCTION SHEETS FOR STATIONS OF ROW LIMITS.



CLIENT CITY OF ROCHESTER HILLS				JOB # 0190130010	
DATE		CADD KB		ENG/ARCH ES	
PROJ/MR ML		SECTION 22-27		TOWN T.3N., R.11E.	
RANGE R.11E.		COUNTY OAKLAND COUNTY		SCALE H: 1"=40'	
REVISIONS		VERT DATUM Value		HORIZ DATUM Value	
REVISIONS		CITY OF ROCHESTER HILLS		WWW OHM-ADVISORS.COM	
REVISIONS		34000 Plymouth Road Livonia, MI 48150 P (734) 522-6711 F (734) 522-6427		WWW OHM-ADVISORS.COM	
REVISIONS		HAMLIN ROAD REHABILITATION ROW VICINITY MAP STA. 208+50 TO STA. 226+50		OF ## 14	

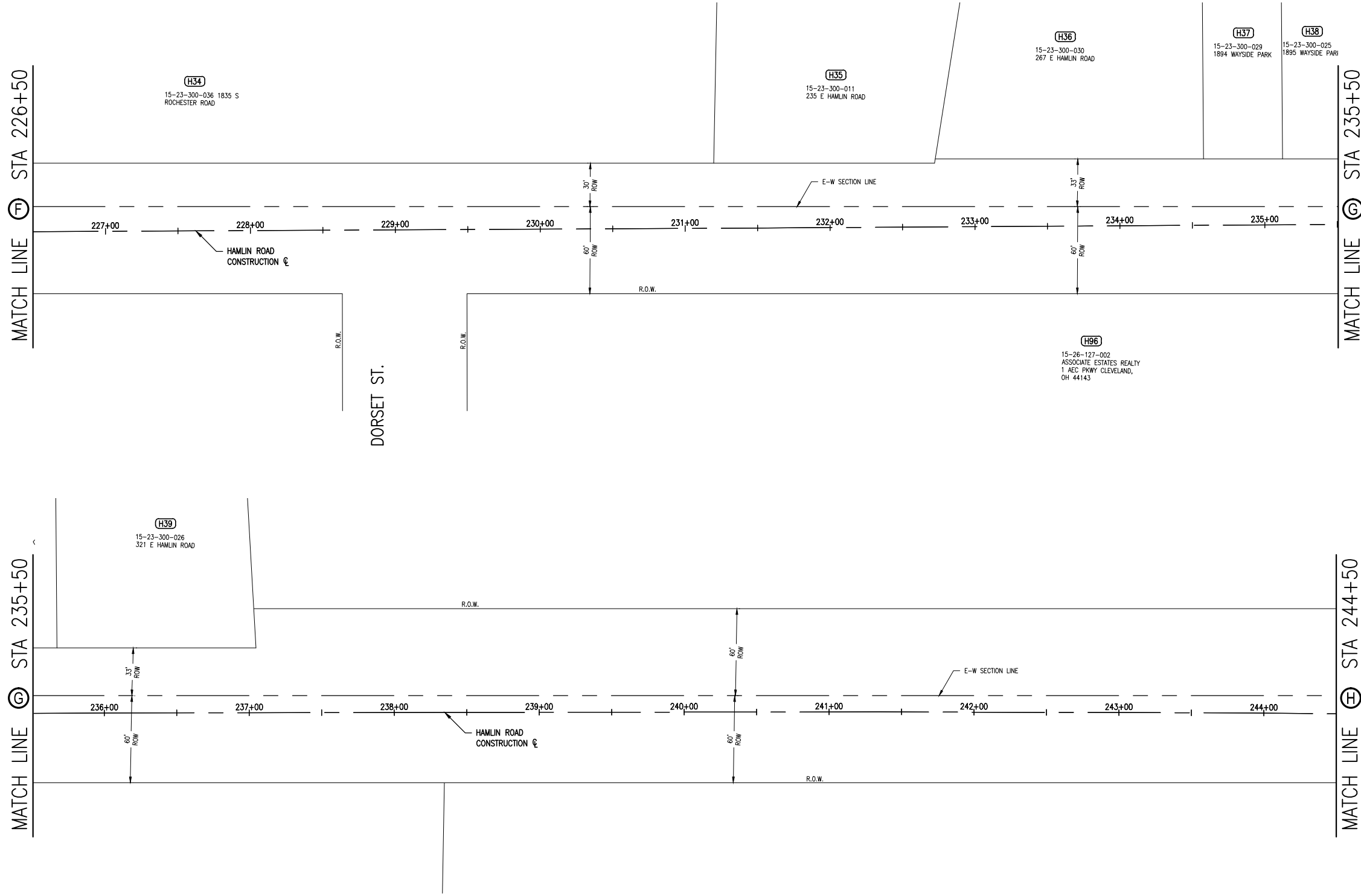


COPYRIGHT 2012 OHM. ALL DRAWINGS AND WRITTEN MATERIALS APPEARING HEREIN CONSTITUTE THE ORIGINAL AND UNPUBLISHED WORK OF OHM AND THE SAME MAY NOT BE REPRODUCED, COPIED, OR DISCLOSED WITHOUT PRIOR WRITTEN CONSENT OF OHM.

BENCHMARK #207
 N 422370.62
 E 13455569.63 ELEV 794.908
 TRAVERSE POINT #108
 N 422491.98
 E 13456470.95 ELEV 775.32
 BENCHMARK #208
 N 422511.00
 E 13456491.79 ELEV 774.939
 BENCHMARK #209
 N 422553.70
 E 13458869.51 ELEV 749.909

HAMLIN ROAD

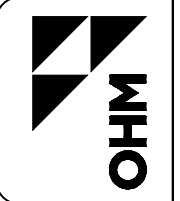
(R.O.W. VARIES)



DRAWING PATH: P:\4000_4100_Livonia\0190130010_Hamlin_Rd_Phase_1\dwg\misc\130010RC01.dwg Feb 14, 2014 - 12:05pm

- LEGEND**
- PROPOSED HIGHWAY EASEMENT
 - PROPOSED TEMPORARY GRADING EASEMENT
 - PROPOSED PERMANENT PATHWAY EASEMENT

NOTE: SEE CONSTRUCTION SHEETS FOR STATIONS OF ROW LIMITS.



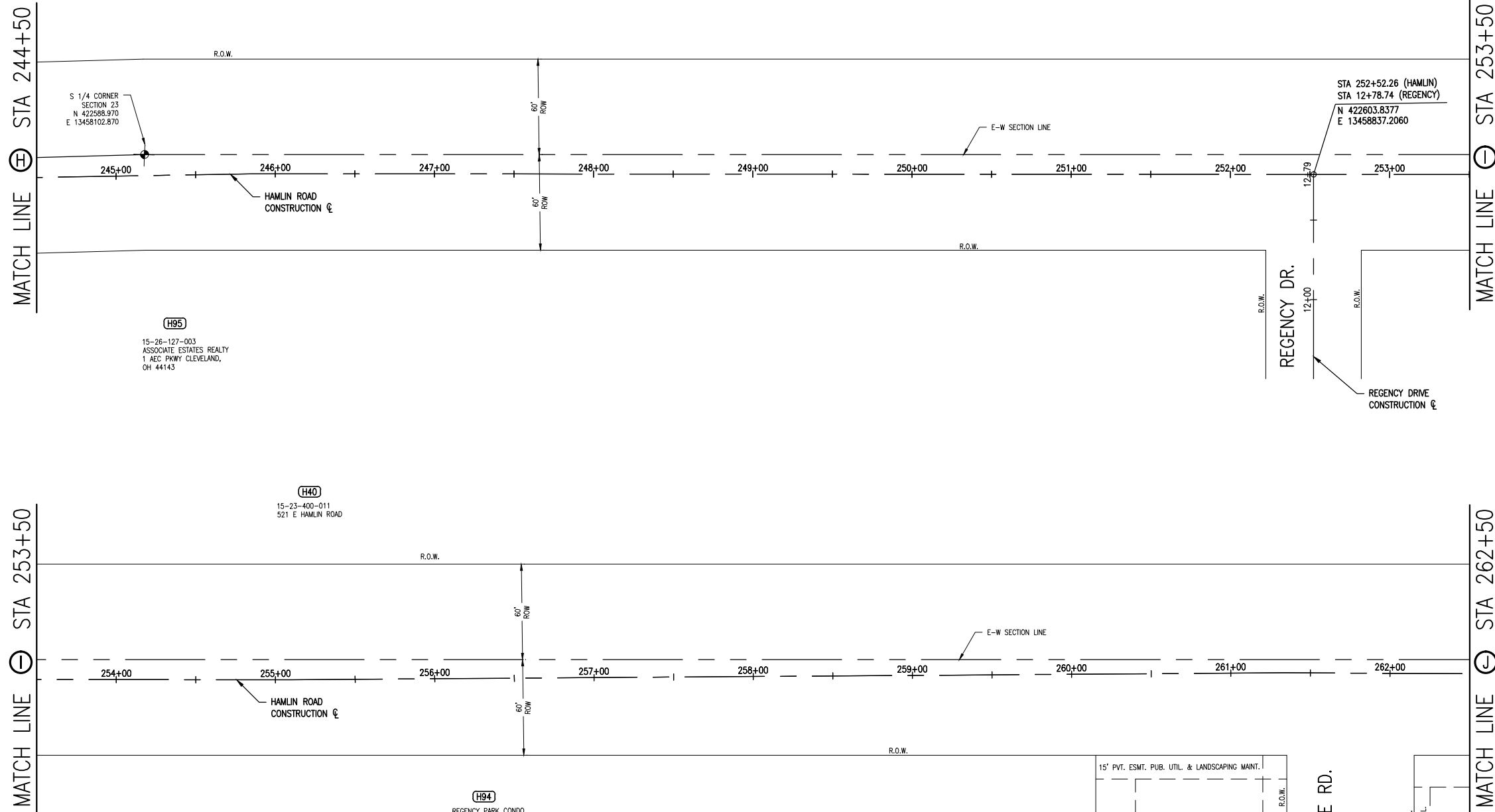
DATE	CADD	ENG/ARCH	PROJ/MGR	SECTION	TOWN	RANGE	COUNTY	CITY/TOWNSHIP	SCALE	VERT DATUM
	KB	ES	ML	22-27	T.3N.	R.11E.	OAKLAND COUNTY	CITY OF ROCHESTER HILLS	H: 1"=40'	N/A
CLIENT: CITY OF ROCHESTER HILLS									JOB #	VERT DATUM Value
REVISIONS:									0190130010	Value
REVISIONS:									WWW.OHM-ADVISORS.COM	
REVISIONS:									34000 Plymouth Road Livonia, MI 48150 P (734) 522-6711 F (734) 522-6427	
REVISIONS:									COPYRIGHT 2012 OHM ALL DRAWINGS AND WRITTEN MATERIALS APPEARING HEREIN CONSTITUTE THE ORIGINAL AND UNPUBLISHED WORK OF OHM AND THE SAME MAY NOT BE REPRODUCED, DISTRIBUTED, OR DISCLOSED WITHOUT PRIOR WRITTEN CONSENT OF OHM.	

HAMLIN ROAD
 REHABILITATION
 ROW VICINITY MAP
 STA. 226+50 TO STA. 244+50



BENCHMARK #208 N 422511.00 E 13456491.79 ELEV 774.939
TRAVERSE POINT #109 N 422560.86 E 13458867.82 ELEV 749.22
BENCHMARK #209 N 422553.70 E 13458869.51 ELEV 749.909
BENCHMARK #210 N 422493.75 E 13460683.05 ELEV 742.568

HAMLIN ROAD (120' R.O.W.)



- LEGEND**
- PROPOSED HIGHWAY EASEMENT
 - PROPOSED TEMPORARY GRADING EASEMENT
 - PROPOSED PERMANENT PATHWAY EASEMENT

NOTE: SEE CONSTRUCTION SHEETS FOR STATIONS OF ROW LIMITS.

DATE	CADD	ENG/ARCH	PROJ/MGR	SECTION	TOWN	RANGE	COUNTY	CITY/TOWNSHIP	SCALE	VERT DATUM	HORIZ DATUM
	KB	ES	ML	22-27	T.3N., R.11E.		OAKLAND COUNTY	CITY OF ROCHESTER HILLS	H: 1"=40'	V: N/A	Value
				CLIENT			JOB #		0190130010		
CITY OF ROCHESTER HILLS											
REVISIONS											
34000 Plymouth Road Livonia, MI 48150 P (734) 522-6711 F (734) 522-6427											
WWW.OHM-ADVISORS.COM											

HAMLIN ROAD
REHABILITATION
ROW VICINITY MAP
STA. 244+50 TO STA. 262+50



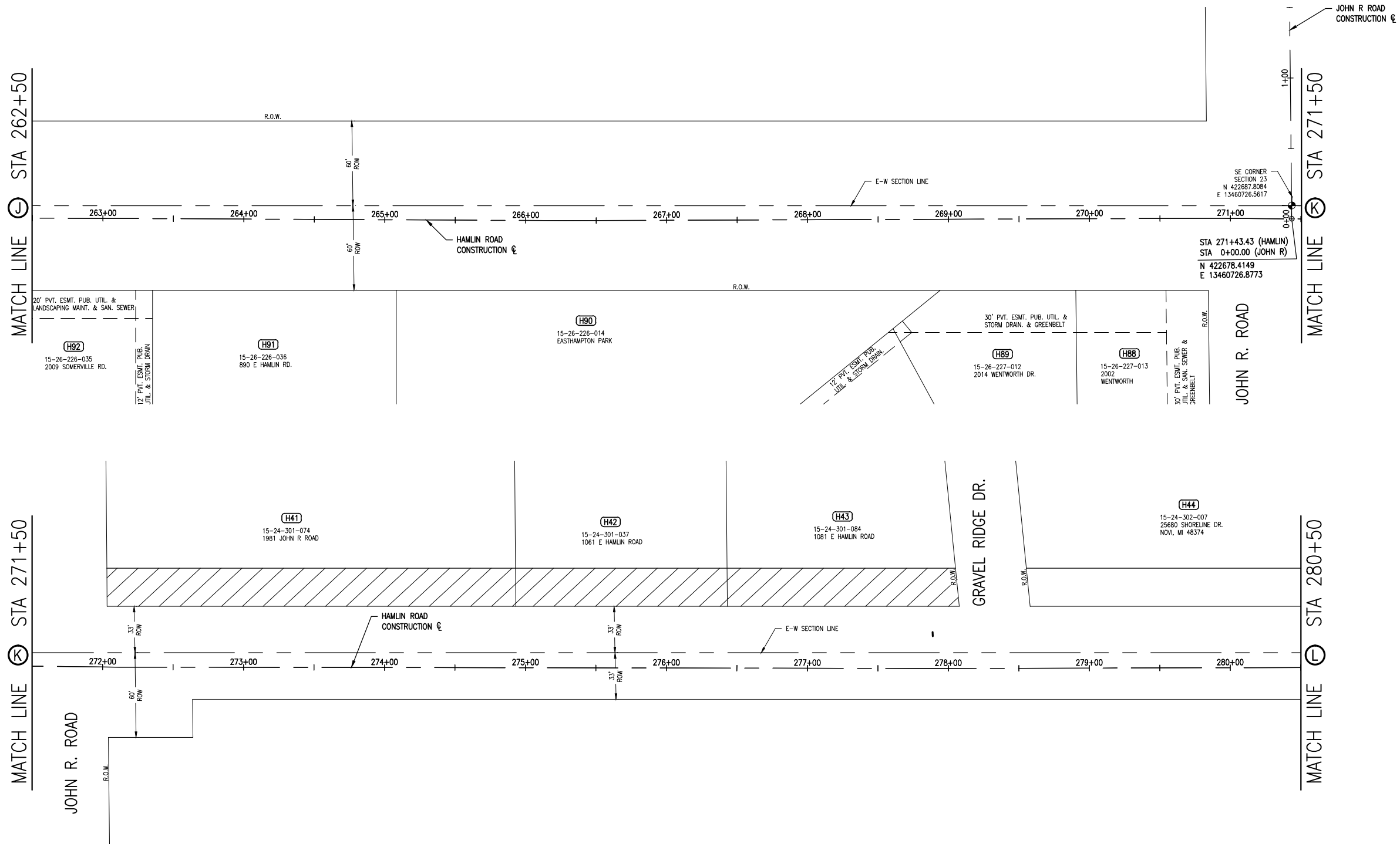
DRAWING PATH: P:\4000_4100_Livonia\4100_Livonia\190130010_Hamlin_Rd_Phase_1\190130010ROW1.dwg Feb 14, 2014 - 12:06pm

COPYRIGHT 2012 OHM. ALL DRAWINGS AND WRITTEN MATERIALS APPEARING HEREIN CONSTITUTE THE ORIGINAL AND UNPUBLISHED WORK OF OHM AND THE SAME MAY NOT BE REPRODUCED, COPIED, OR DISCLOSED WITHOUT PRIOR WRITTEN CONSENT OF OHM.

BENCHMARK #210
N 422493.73
E 13460683.05 ELEV 742.568
TRAVERSE POINT #110
N 422632.95
E 1346079.39 ELEV 739.59
TRAVERSE POINT #111
N 422648.80
E 13461261.09 ELEV 744.17
BENCHMARK #211
N 422659.20
E 13461420.47 ELEV 742.702

HAMLIN ROAD

(R.O.W. VARIES)



NOTE: SEE CONSTRUCTION SHEETS FOR STATIONS OF ROW LIMITS.

- LEGEND**
- PROPOSED HIGHWAY EASEMENT
 - PROPOSED TEMPORARY GRADING EASEMENT
 - PROPOSED PERMANENT PATHWAY EASEMENT



DATE	DATE	CADD	ENG/ARCH	KB	ES	PROJ/MGR	SECTION	TOWN	RANGE	COUNTY	CITY/TOWNSHIP	SCALE	VERT DATUM	HORIZ DATUM	VERT VALUE	
							22-27	T.3N, R.11E		OAKLAND COUNTY	CITY OF ROCHESTER HILLS	H: 1"=40'	V: N/A			
CLIENT: CITY OF ROCHESTER HILLS												JOB #	0190130010			
REVISIONS:												REVISIONS				
34000 Plymouth Road Livonia, MI 48150 P (734) 522-6711 F (734) 522-6427												WWW OHM-ADVISORS.COM				
COPYRIGHT 2012 OHM. ALL DRAWINGS AND WRITTEN MATERIALS APPEARING HEREIN CONSTITUTE THE ORIGINAL AND UNPUBLISHED WORK OF OHM AND THE SAME MAY NOT BE REPRODUCED, DISTRIBUTED, OR DISCLOSED WITHOUT PRIOR WRITTEN CONSENT OF OHM.																

HAMLIN ROAD
REHABILITATION
ROW VICINITY MAP
STA. 262+50 TO STA. 280+50

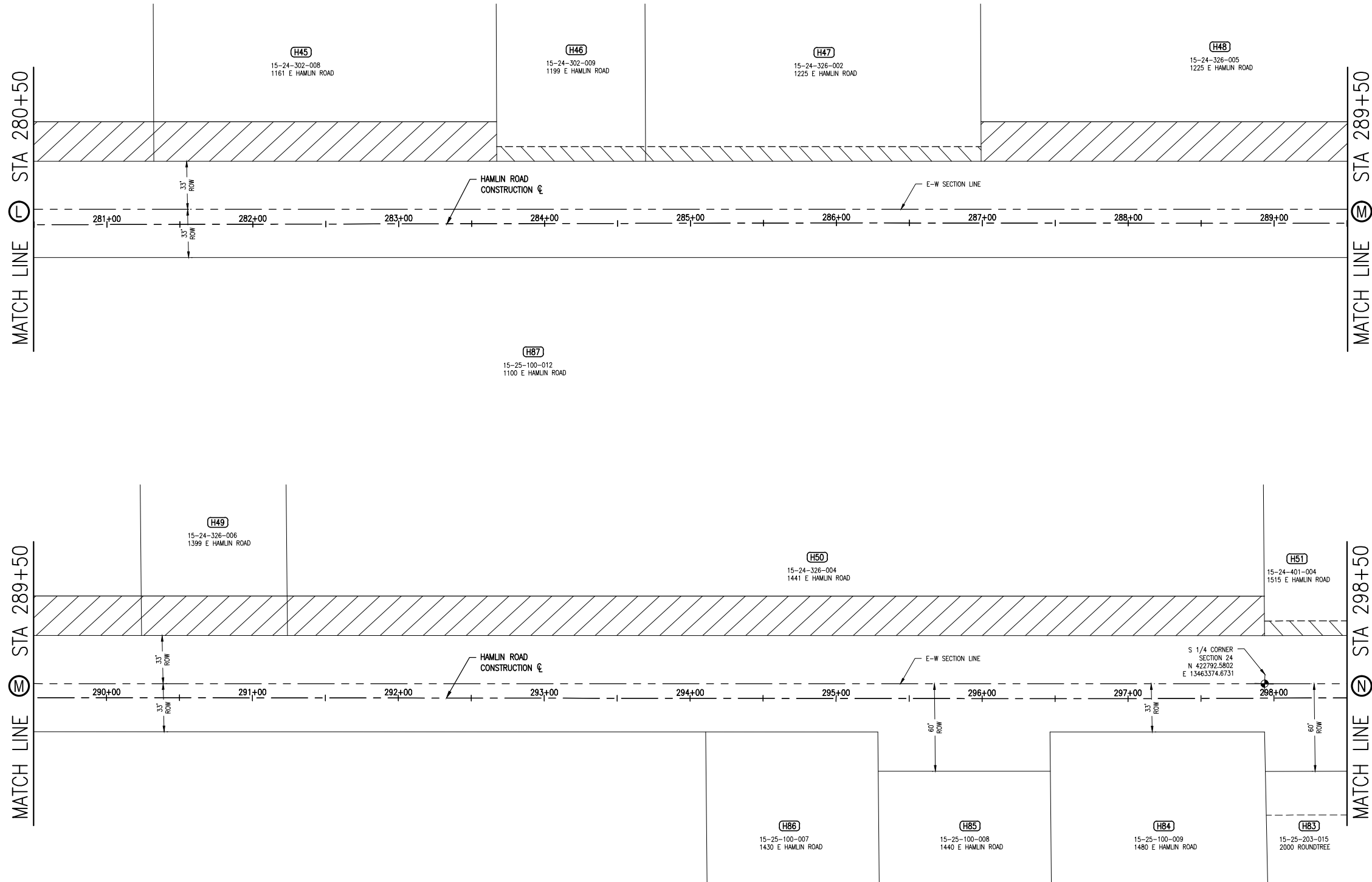


DRAWING PATH: P:\4000_4100_Livonia\190130010_Hamlin_Rd_Phase_1\190130010RCRW1.dwg Feb 14, 2014 - 12:06pm

BENCHMARK #212	N 422683.23	E 13462058.59	ELEV 729.159
TRAVERSE POINT #112	N 422675.25	E 13462011.37	ELEV 729.17
BENCHMARK #213	N 422708.15	E 13462698.65	ELEV 726.197
TRAVERSE POINT #113	N 422719.58	E 13462725.80	ELEV 725.95
BENCHMARK #214	N 422742.69	E 13463575.74	ELEV 725.944

HAMLIN ROAD

(R.O.W. VARIES)



LEGEND

- PROPOSED HIGHWAY EASEMENT
- PROPOSED TEMPORARY GRADING EASEMENT
- PROPOSED PERMANENT PATHWAY EASEMENT

NOTE: SEE CONSTRUCTION SHEETS FOR STATIONS OF ROW LIMITS.

		SCALE	H: 1"=40'	V: N/A	JOB #	0190130010			
DATE	CADD	ENG/ARCH	PROJ/MGR	SECTION	TOWN	RANGE	COUNTY	CITY/TOWNSHIP	VERT DATUM
	KB	ES	ML	22-27	T.3N.	R.11E.	OAKLAND COUNTY	CITY OF ROCHESTER HILLS	Value
CLIENT: CITY OF ROCHESTER HILLS									Value
REVISIONS:									REVISIONS:
34000 Plymouth Road Livonia, MI 48150 P (734) 522-6711 F (734) 522-6427									WWW.OHM-ADVISORS.COM
COPYRIGHT 2012 OHM. ALL DRAWINGS AND WRITTEN MATERIALS APPEARING HEREIN CONSTITUTE THE ORIGINAL AND UNPUBLISHED WORK OF OHM AND THE SAME MAY NOT BE REPRODUCED, DISTRIBUTED, OR DISCLOSED WITHOUT PRIOR WRITTEN CONSENT OF OHM.									

HAMLIN ROAD
REHABILITATION
ROW VICINITY MAP



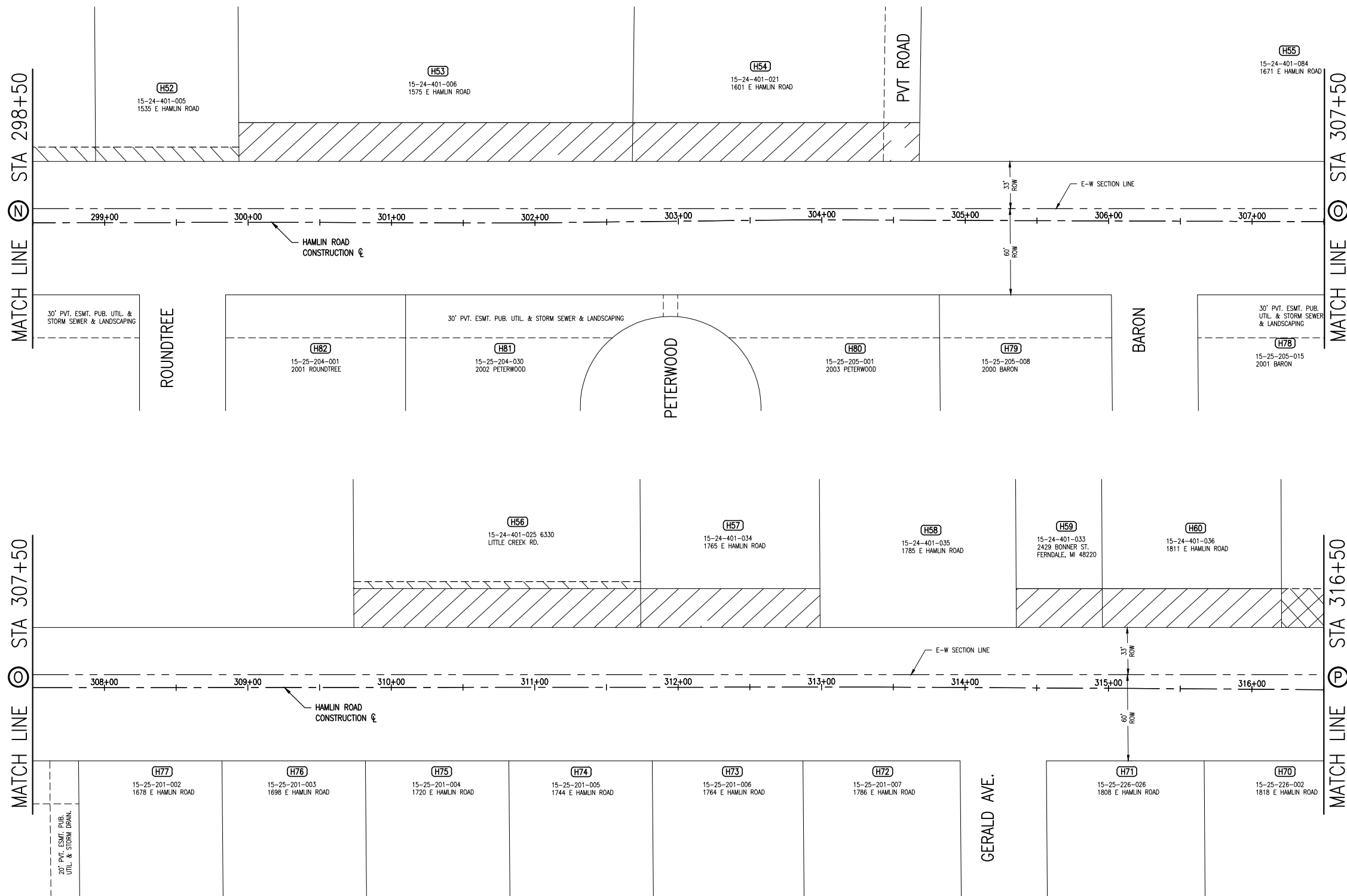
Know what's below.
Call before you dig.

DRAWING PATH: P:\4000_4100_Livonia\190130010_Hamlin_Rd_Phase_1\dwg\Misc\130010RCV2.dwg Feb 14, 2014 - 12:08pm

BENCHMARK #213
N 422708.15
E 13462698.65 ELEV 726.197
TRAVERSE POINT #114
N 422750.72
E 13463606.52 ELEV 725.08
BENCHMARK #214
N 422742.69
E 13463575.74 ELEV 725.944
BENCHMARK #215
N 422910.24
E 13464584.69 ELEV 722.412
TRAVERSE POINT #115
N 422870.56
E 13464590.38 ELEV 722.34
TRAVERSE POINT #116
N 422814.66
E 13465189.92 ELEV 718.66
BENCHMARK #216
N 422821.36
E 13465119.83 ELEV 718.401

HAMLIN ROAD

(93' R.O.W.)



NOTE: SEE CONSTRUCTION SHEETS FOR STATIONS OF ROW LIMITS.

LEGEND

	PROPOSED HIGHWAY EASEMENT
	PROPOSED TEMPORARY GRADING EASEMENT
	PROPOSED PERMANENT PATHWAY EASEMENT

DRAWING PATH: P:\4000_4100_Livonia\190130010_Hamlin_Rd_Phase_1\dwg\Misc\190130010RCV2.dwg Feb 14, 2014 - 12:08pm



DATE	CADD	ENG/ARCH	ES	KB	PROJ/MGR	ML	SECTION	TOWN	RANGE	COUNTY	CITY/TOWNSHIP	SCALE	VERT DATUM
							22-27	T.3N. R.11E.		OAKLAND	CITY OF ROCHESTER HILLS	H: 1"=40'	N/A
												V: N/A	Value
												JOB #	Value
												0190130010	

**HAMLIN ROAD
REHABILITATION
ROW VICINITY MAP**

34000 Plymouth Road | Livonia, MI 48150 | P (734) 522-6711 | F (734) 522-6427

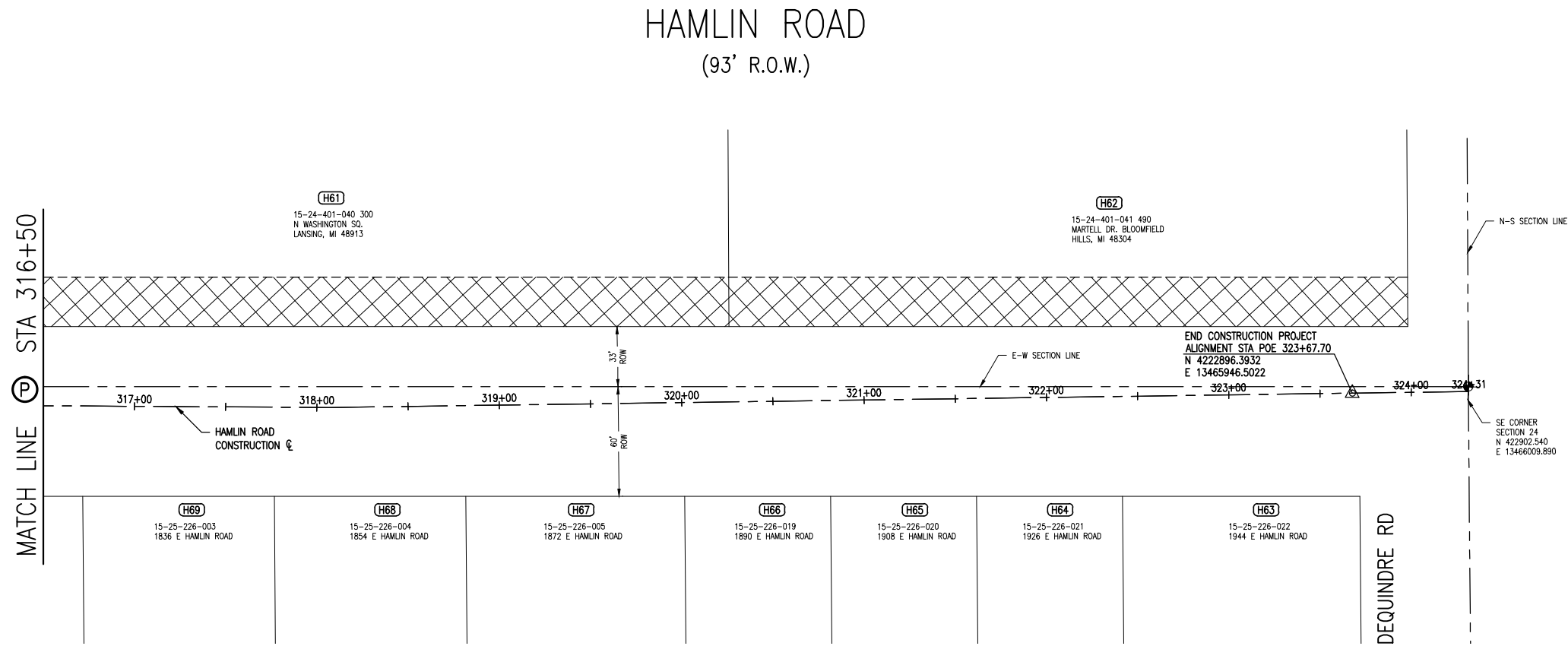
WWW.OHM-ADVISORS.COM

COPYRIGHT 2012 OHM. ALL DRAWINGS AND WRITTEN MATERIALS APPEARING HEREIN CONSTITUTE THE ORIGINAL AND UNPUBLISHED WORK OF OHM AND THE SAME MAY NOT BE REPRODUCED, COPIED, EITHER WHOLLY OR IN PART, WITHOUT THE WRITTEN CONSENT OF OHM.

SHEET
19
OF ##



BENCHMARK #216
 N 422821.36
 E 13465119.83 ELEV 718.401
 TRAVERSE POINT #117
 N 422854.48
 E 13465954.96 ELEV 718.81
 BENCHMARK #217
 N 422842.40
 E 13465952.53 ELEV 719.953



DRAWING PATH: P:\4000_4100_Livonia\190130010_Hamlin_Rd_Phase_1\dwg\misc\130010RCOV2.dwg Feb 14, 2014 - 12:09pm

- LEGEND**
- PROPOSED HIGHWAY EASEMENT
 - PROPOSED TEMPORARY GRADING EASEMENT
 - PROPOSED PERMANENT PATHWAY EASEMENT

NOTE: SEE CONSTRUCTION SHEETS FOR STATIONS OF ROW LIMITS.

DATE	CADD	KB	ENG/ARCH	ES	PROJ/MGR	ML	SECTION	TOWN	RANGE	COUNTY	CITY/VILLAGETOWNSHIP	SCALE	HORIZ DATUM	VERT DATUM
							22-27	T.3N.	R.11E.	OAKLAND COUNTY	CITY OF ROCHESTER HILLS	H: 1"=40'	V: N/A	Value
														0190130010
CLIENT: CITY OF ROCHESTER HILLS														
REVISIONS:														
34000 Plymouth Road Livonia, MI 48150 P (734) 522-6711 F (734) 522-6427														
WWW.OHM-ADVISORS.COM														

COPYRIGHT 2012 OHM. ALL DRAWINGS AND WRITTEN MATERIALS APPEARING HEREIN CONSTITUTE THE ORIGINAL AND UNPUBLISHED WORK OF OHM AND THE SAME MAY NOT BE REPRODUCED, DISTRIBUTED, OR DISCLOSED WITHOUT PRIOR WRITTEN CONSENT OF OHM.



Know what's below.
 Call before you dig.

HAMLIN ROAD
 REHABILITATION
 ROW VICINITY MAP

SHEET
 20
 OF ##

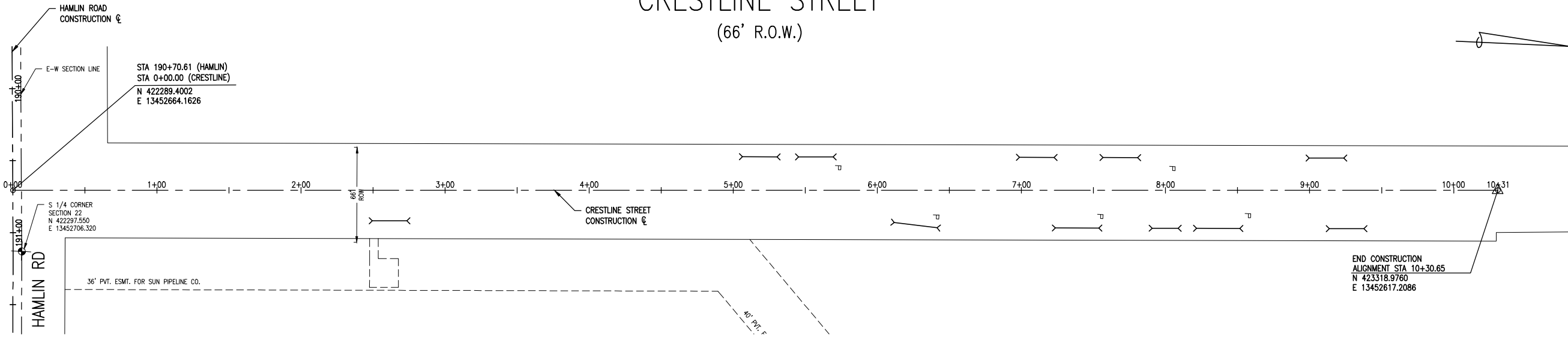
BENCHMARK #202
 N 42238.55
 E 13452514.50 ELEV 845.787
 BENCHMARK #203
 N 422278.74
 E 13452989.53 ELEV 841.679

BENCHMARK #209
 N 422553.70
 E 13458869.51 ELEV 749.909
 TRAVERSE POINT #109
 N 422560.86
 E 13458867.82 ELEV 749.22
 BENCHMARK #210
 N 422493.73
 E 13460683.05 ELEV 742.568

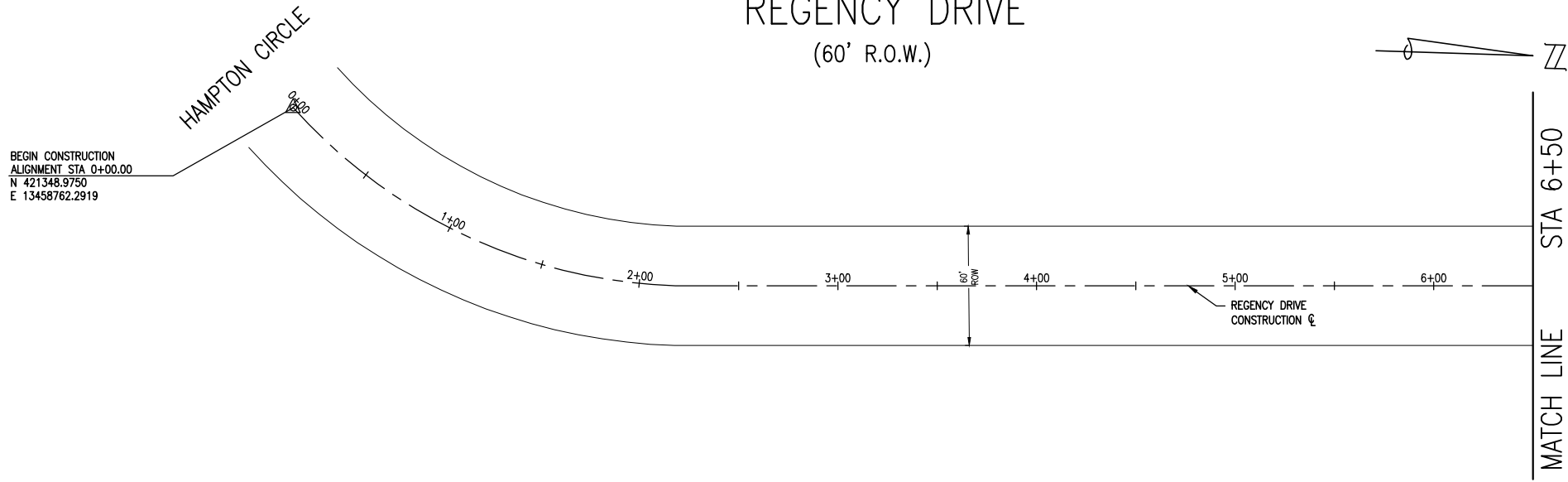
BENCHMARK #209
 N 422553.70
 E 13458869.51 ELEV 749.909
 TRAVERSE POINT #109
 N 422560.86
 E 13458867.82 ELEV 749.22
 BENCHMARK #210
 N 422493.73
 E 13460683.05 ELEV 742.568

DRAWING PATH: P:\4000_4100_Livonia\190130010_Hamlin_Rd_Phase_1\Drawings\190130010RCOV2.dwg Feb 14, 2014 - 12:09pm

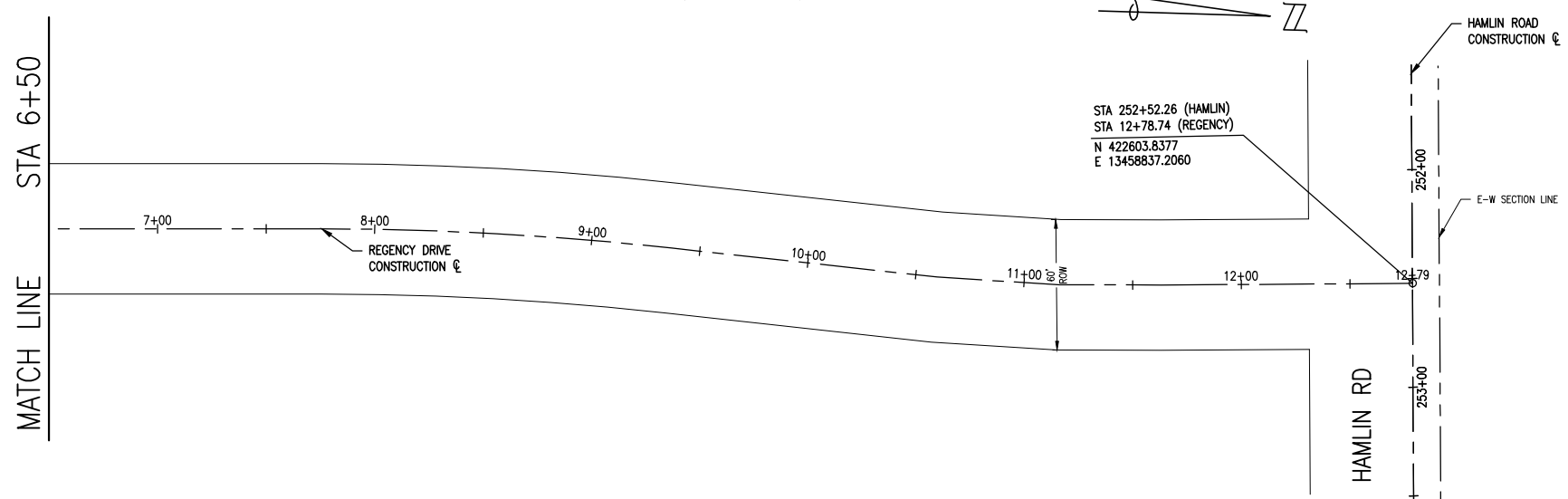
CRESTLINE STREET (66' R.O.W.)



REGENCY DRIVE (60' R.O.W.)



REGENCY DRIVE (60' R.O.W.)



LEGEND

- PROPOSED HIGHWAY EASEMENT
- PROPOSED TEMPORARY GRADING EASEMENT
- PROPOSED PERMANENT PATHWAY EASEMENT

NOTE: SEE CONSTRUCTION SHEETS FOR STATIONS OF ROW LIMITS.



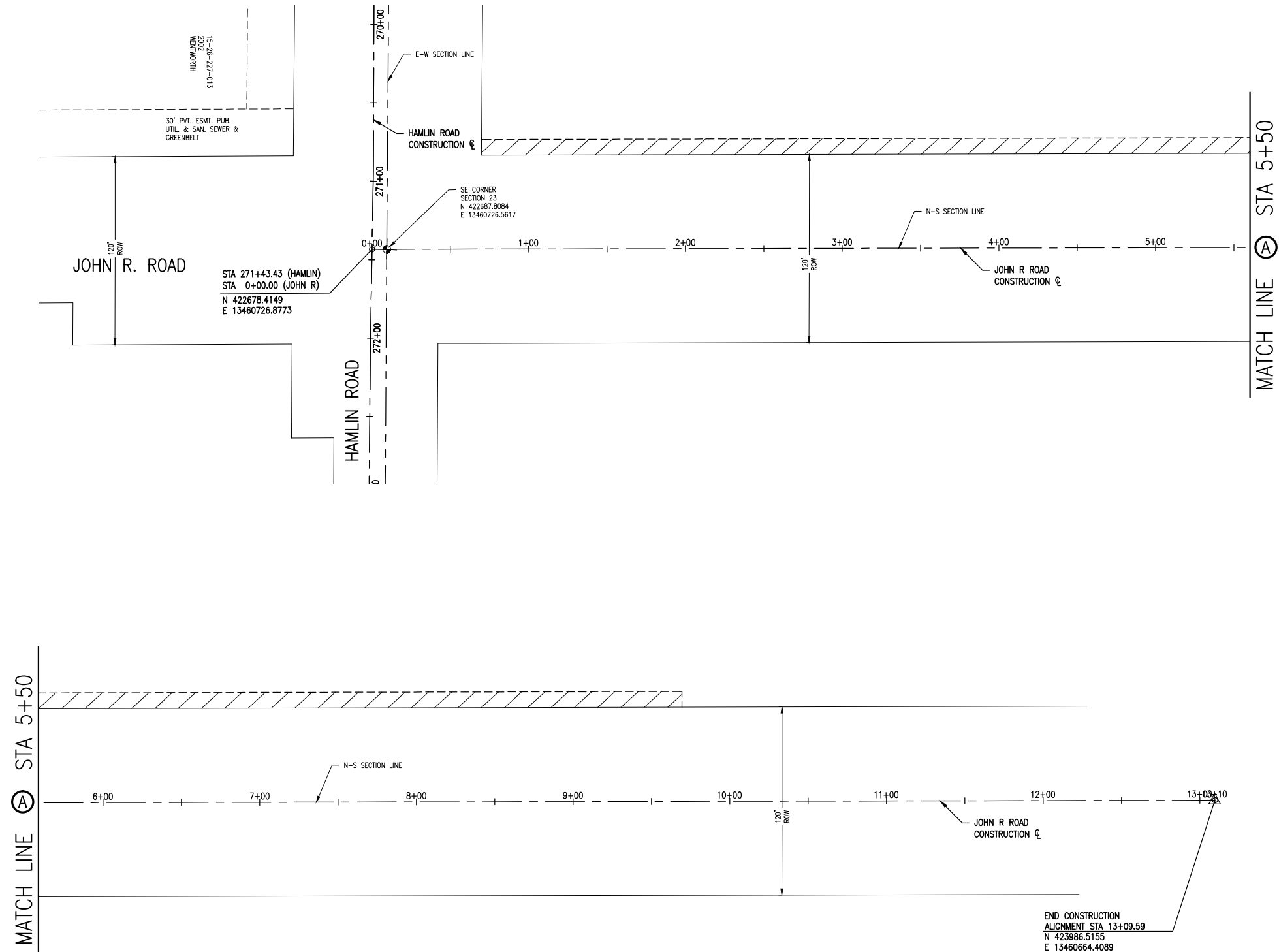
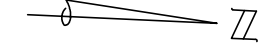
DATE	CADD	ENG/ARCH	PROJ/MGR	SECTION	TOWN	RANGE	COUNTY	CITY/VILLAGE/TOWNSHIP	SCALE	HORIZ DATUM	VERT DATUM
	KB	ES	ML	22-27	T.3N.	R.11E.	OAKLAND COUNTY	CITY OF ROCHESTER HILLS	1"=40'	N/A	N/A
CLIENT: CITY OF ROCHESTER HILLS									JOB # 0190130010		
REVISIONS:									REVISIONS:		
34000 Plymouth Road Livonia, MI 48150 P (734) 522-6711 F (734) 522-6427 WWW.OHM-ADVISORS.COM COPYRIGHT 2012 OHM. ALL DRAWINGS AND WRITTEN MATERIALS APPEARING HEREIN CONSTITUTE THE ORIGINAL AND UNPUBLISHED WORK OF OHM AND THE SAME MAY NOT BE REPRODUCED, DISTRIBUTED, OR DISCLOSED WITHOUT PRIOR WRITTEN CONSENT OF OHM.											

HAMLIN ROAD
 REHABILITATION
 ROW VICINITY MAP



BENCHMARK #210
 N 422493.73
 E 13460683.05 ELEV 742.568
 TRAVERSE POINT #110
 N 422632.95
 E 13460679.39 ELEV 739.59
 BENCHMARK #211
 N 422659.20
 E 13461420.47 ELEV 742.702

JOHN R ROAD (120' R.O.W.)



- LEGEND**
- PROPOSED HIGHWAY EASEMENT
 - PROPOSED TEMPORARY GRADING EASEMENT
 - PROPOSED PERMANENT PATHWAY EASEMENT

NOTE: SEE CONSTRUCTION SHEETS FOR STATIONS OF ROW LIMITS.



DATE	CADD	ENG/ARCH	PROJ/MGR	SECTION	TOWN	RANGE	COUNTY	CITY	SCALE	V.	JOB #	VERT DATUM
	KB	ES	ML	22-27	T.3N.	R.11E.	OAKLAND COUNTY	CITY OF ROCHESTER HILLS	H: 1"=40'	N/A	0190130010	Value
CLIENT: CITY OF ROCHESTER HILLS									REVISIONS:			Value
CLIENT: CITY OF ROCHESTER HILLS									REVISIONS:			Value
34000 Plymouth Road Livonia, MI 48150 P (734) 522-6711 F (734) 522-6427												
WWW.OHM-ADVISORS.COM												
COPYRIGHT 2012 OHM ALL DRAWINGS AND WRITTEN MATERIALS APPEARING HEREIN CONSTITUTE THE ORIGINAL AND UNPUBLISHED WORK OF OHM AND THE SAME MAY NOT BE REPRODUCED, DISTRIBUTED, OR DISCLOSED WITHOUT PRIOR WRITTEN CONSENT OF OHM												

HAMLIN ROAD
 REHABILITATION
 ROW VICINITY MAP

SHEET
22
 OF ##