

# REDWOOD ROCHESTER HILLS

E. AVON ROAD  
ROCHESTER HILLS, MI 48307  
OAKLAND COUNTY



7510 E. PLEASANT VALLEY RD  
INDEPENDENCE, OH 44131

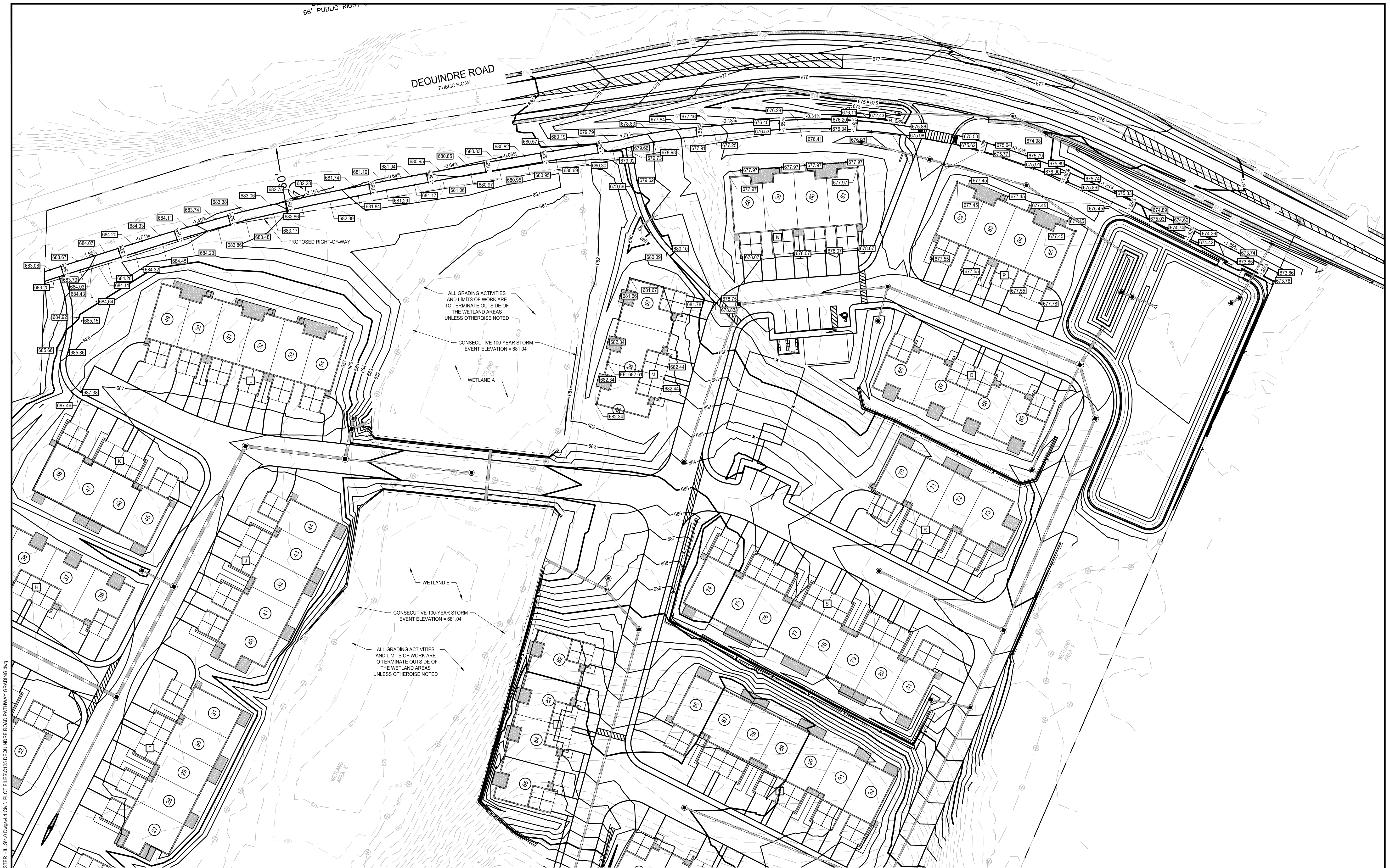


Bergmann Associates, Architects, Engineers,  
Landscape Architects & Surveyors, D.P.C.  
7050 West Saginaw Hwy.  
Suite 200  
Lansing, MI 48917

office: 517.272.9835  
fax: 517.272.9836

www.bergmannpc.com

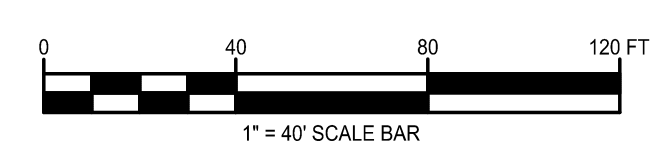
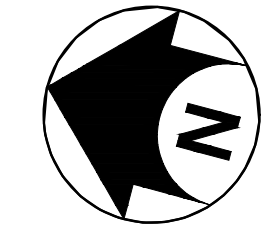
DATE	DESCRIPTION
11/16/2018	PUD REVIEW
02/04/2019	REV. PER CITY COMMENTS
03/21/2019	2ND REV. PER CITY COMMENTS
06/02/2019	3RD REV. PER CITY COMMENTS
08/22/2019	4TH REV. PER CITY COMMENTS
08/27/2019	STEP ONE PUD REVIEW
12/23/2019	CITY RESUBMITTAL
01/17/2020	PERMIT REVIEW
03/02/2020	ENGINEERING RESUBMITTAL
05/06/2020	ENGINEERING RESUBMITTAL
06/09/2020	ENGINEERING RESUBMITTAL
07/08/2020	ENGINEERING RESUBMITTAL



C:\Redwood Living\012963.001 REDWOOD - ROCHESTER HILLS\01 Drawings\1 Civil\_Plot Files\012 DEQUINDRE ROAD PATHWAY GRADING.dwg  
7/6/2020 11:36 AM

### GRADING LEGEND:

- 75— PROPOSED MAJOR CONTOUR
- 76— PROPOSED MINOR CONTOUR
- ✕ TC=78.01 PROPOSED TOP OF CURB / BOTTOM OF CURB ELEVATION
- ✕ BC=77.51 PROPOSED TOP OF CURB / BOTTOM OF CURB ELEVATION
- ✕ TWBW=152.50 PROPOSED TOP OF WALL / BOTTOM OF WALL
- ✕ 77.73 PROPOSED SPOT ELEVATION
- ✕ EG=77.73 EXISTING ELEVATION
- ✕ HP=77.73 PROPOSED HIGH POINT ELEVATION
- ✕ TG=77.73 PROPOSED TOP OF GRATE ELEVATION
- ✕ FF=77.73 FINISHED FLOOR ELEVATION
- 2.5% PROPOSED SLOPE
- - - - - EXISTING CONTOUR
- — — — — RIDGE LINE



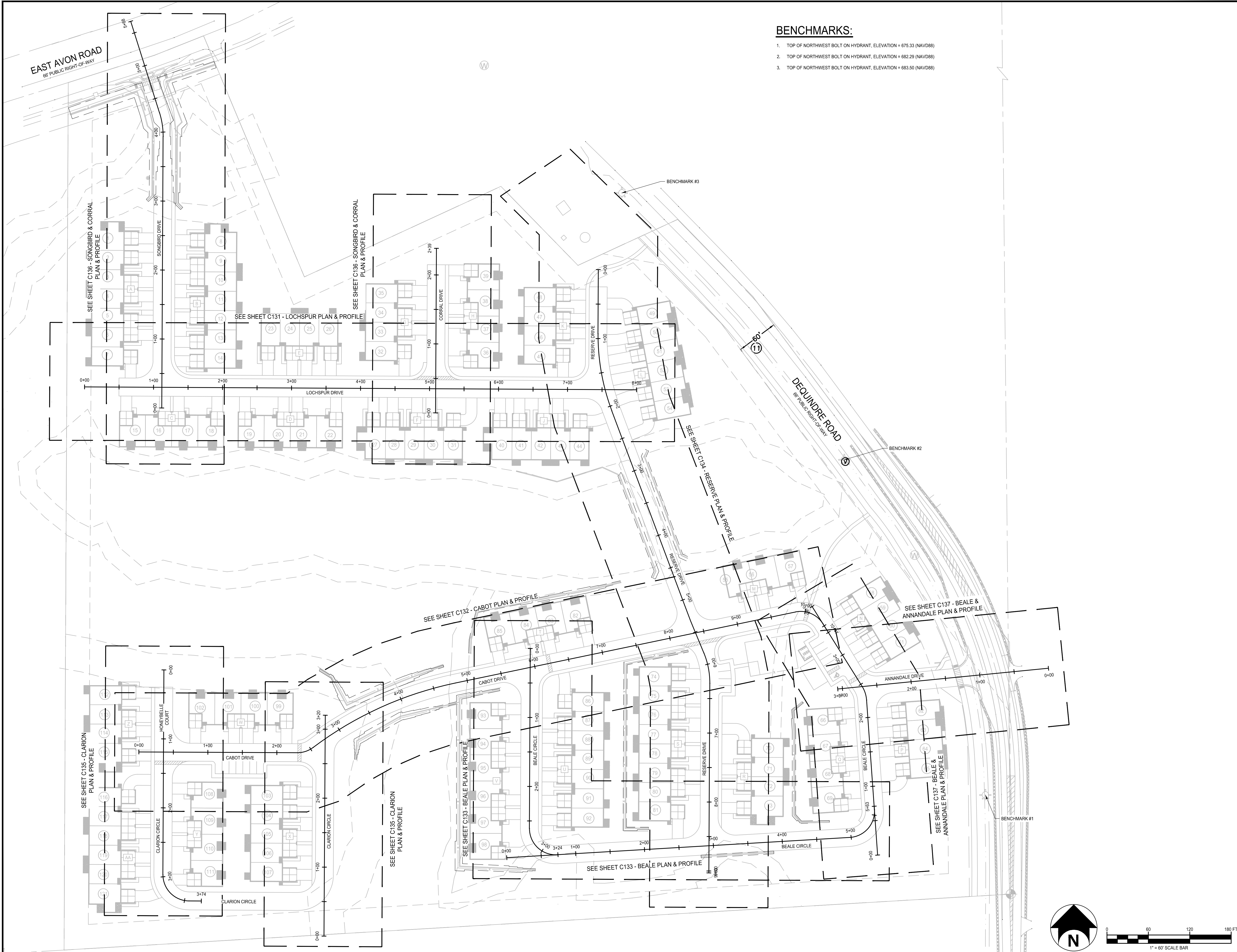
**Not For Construction**

Copyright © Bergmann Associates, Architects, Engineers,  
Landscape Architects & Surveyors, D.P.C.

Project Manager: P. FURTAW, PE	Checked By: P. FURTAW, PE
Designed By: I. GRAHAM, PE	Drawn By: I. GRAHAM, PE
Date Revisd: NOVEMBER 9, 2018	Project Number: 12963.00

## DEQUINDRE ROAD PATHWAY GRADING

# C125



**BENCHMARKS:**

1. TOP OF NORTHWEST BOLT ON HYDRANT, ELEVATION = 675.33 (NAVD88)
2. TOP OF NORTHWEST BOLT ON HYDRANT, ELEVATION = 682.29 (NAVD88)
3. TOP OF NORTHWEST BOLT ON HYDRANT, ELEVATION = 683.50 (NAVD88)

# REDWOOD ROCHESTER HILLS

E. AVON ROAD  
ROCHESTER HILLS, MI 48307  
OAKLAND COUNTY



7510 E. PLEASANT VALLEY RD  
INDEPENDENCE, OH 44131



Bergmann Associates, Architects, Engineers,  
Landscape Architects & Surveyors, D.P.C.  
7050 West Saginaw Hwy.  
Suite 200  
Lansing, MI 48917

office: 517.272.9835  
fax: 517.272.9836

www.bergmannpc.com

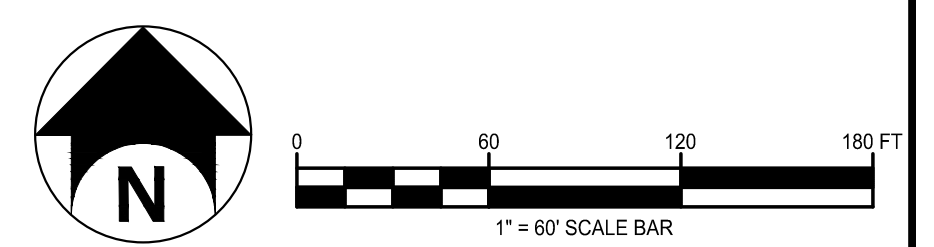
DATE	DESCRIPTION
11/16/2018	PUD REVIEW
02/04/2019	REV. PER CITY COMMENTS
03/21/2019	2ND REV. PER CITY COMMENTS
06/02/2019	3RD REV. PER CITY COMMENTS
08/02/2019	4TH REV. PER CITY COMMENTS
08/27/2019	STEP ONE PUD REVIEW
12/23/2019	CITY RESUBMITTAL
01/17/2020	PERMIT REVIEW
03/02/2020	ENGINEERING RESUBMITTAL
05/06/2020	ENGINEERING RESUBMITTAL
06/09/2020	ENGINEERING RESUBMITTAL
07/06/2020	ENGINEERING RESUBMITTAL

*Not For Construction*

Copyright © Bergmann Associates, Architects, Engineers,  
Landscape Architects & Surveyors, D.P.C.

Project Manager: P. FURTAW, PE	Checked By: P. FURTAW, PE
Designed By: I. GRAHAM, PE	Drawn By: I. GRAHAM, PE
Date Issued: NOVEMBER 9, 2018	Project Number: 12963.00

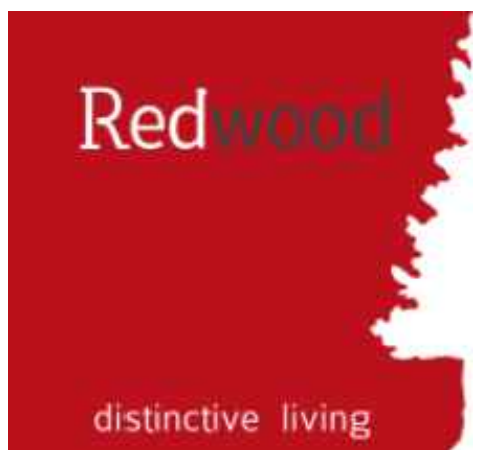
## PLAN AND PROFILE KEY SHEET



# C130

# REDWOOD ROCHESTER HILLS

E. AVON ROAD  
ROCHESTER HILLS, MI 48307  
OAKLAND COUNTY



7510 E. PLEASANT VALLEY RD  
INDEPENDENCE, OH 44131

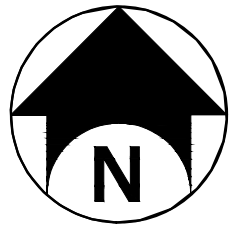
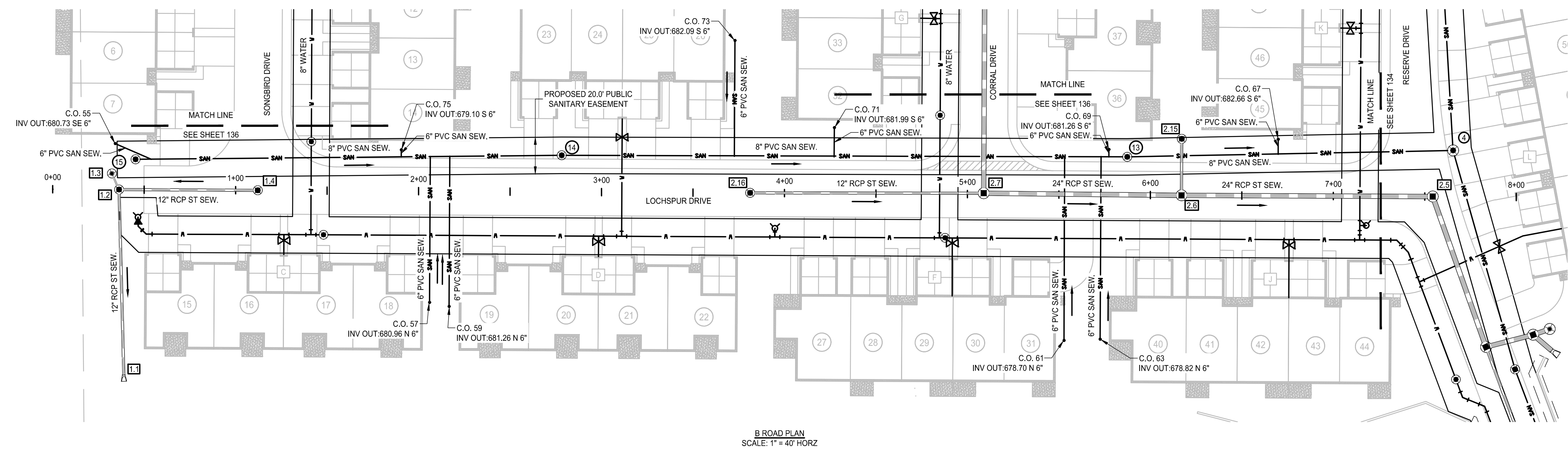


Bergmann Associates, Architects, Engineers,  
Landscape Architects & Surveyors, D.P.C.  
7050 West Saginaw Hwy.  
Suite 200  
Lansing, MI 48917

office: 517.272.9835  
fax: 517.272.9836

www.bergmannpc.com

DATE	DESCRIPTION
11/16/2018	PUD REVIEW
02/04/2019	REV. PER CITY COMMENTS
03/21/2019	2ND REV. PER CITY COMMENTS
06/02/2019	3RD REV. PER CITY COMMENTS
08/22/2019	4TH REV. PER CITY COMMENTS
08/27/2019	STEP ONE PUD REVIEW
12/23/2019	CITY RESUBMITTAL
01/17/2020	PERMIT REVIEW
03/02/2020	ENGINEERING RESUBMITTAL
05/06/2020	ENGINEERING RESUBMITTAL
06/09/2020	ENGINEERING RESUBMITTAL
07/08/2020	ENGINEERING RESUBMITTAL

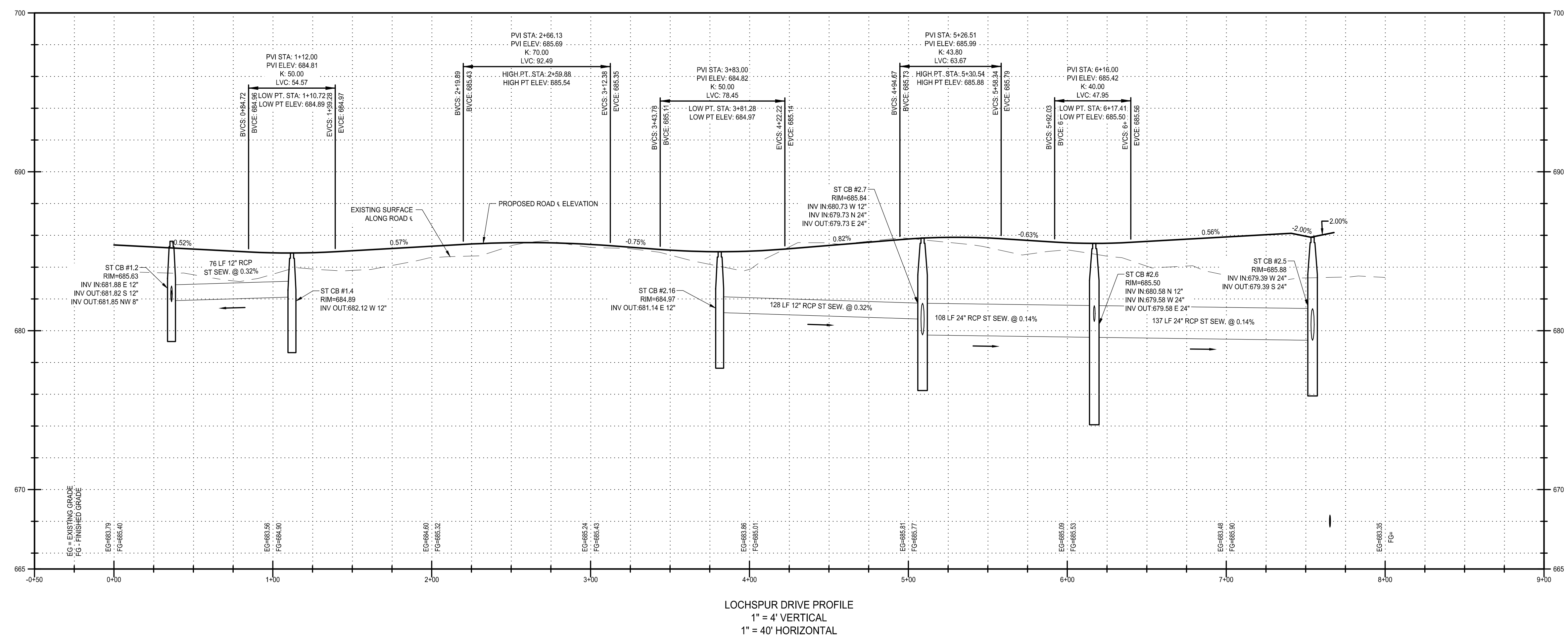


**UTILITY LEGEND:**

- RIPRAP
- STORM SEWER
- YARD BASIN
- CATCH BASIN
- STORM MANHOLE
- HYDRANT
- CURB STOP AND BOX
- WATER MAIN
- GATE WELL
- SANITARY SEWER
- SANITARY SEWER MANHOLE
- CLEANOUT

0 40 80 120 FT  
1" = 40' SCALE BAR

B ROAD PLAN  
SCALE: 1" = 40' HORZ



LOCHSPUR DRIVE PROFILE  
1" = 4' VERTICAL  
1" = 40' HORIZONTAL

*Not For Construction*

Copyright © Bergmann Associates, Architects, Engineers,  
Landscape Architects & Surveyors, D.P.C.

Project Manager: P. FURTAW, PE	Checked By: P. FURTAW, PE
Designed By: I. GRAHAM, PE	Drawn By: I. GRAHAM, PE
Date Issued: NOVEMBER 9, 2018	Project Number: 12963.00

## LOCHSPUR PLAN & PROFILE

# C131

7/6/2020 11:57 AM C:\Redwood Living\012963.00 REDWOOD - ROCHESTER HILLS\A.0 Dwg\k1 Civil\_PLOT FILES\B1 LOCHSPUR PLAN & PROFILE.dwg

# REDWOOD ROCHESTER HILLS

E. AVON ROAD  
ROCHESTER HILLS, MI 48307  
OAKLAND COUNTY



7510 E. PLEASANT VALLEY RD  
INDEPENDENCE, OH 44131

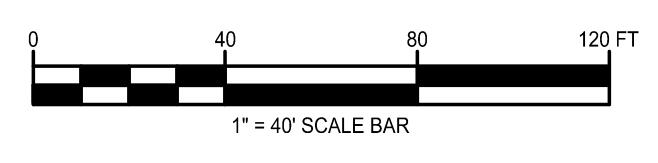
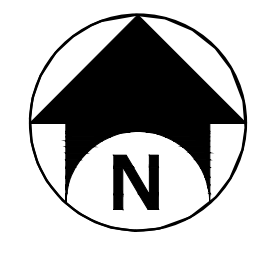


Bergmann Associates, Architects, Engineers,  
Landscape Architects & Surveyors, D.P.C.  
7050 West Saginaw Hwy.  
Suite 200  
Lansing, MI 48917

office: 517.272.9835  
fax: 517.272.9836

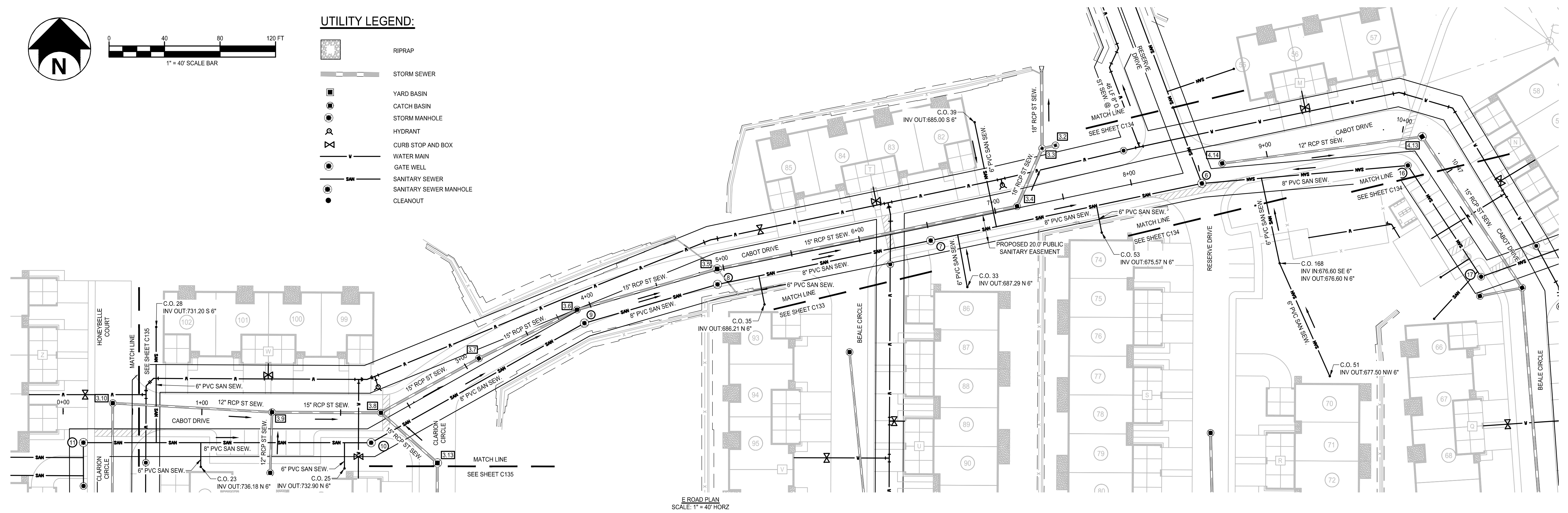
www.bergmannpc.com

DATE	DESCRIPTION
11/16/2018	PUD REVIEW
02/04/2019	REV. PER CITY COMMENTS
03/21/2019	2ND REV. PER CITY COMMENTS
08/02/2019	3RD REV. PER CITY COMMENTS
08/22/2019	4TH REV. PER CITY COMMENTS
08/27/2019	STEP ONE PUD REVIEW
12/23/2019	CITY RESUBMITTAL
01/17/2020	PERMIT REVIEW
03/02/2020	ENGINEERING RESUBMITTAL
05/06/2020	ENGINEERING RESUBMITTAL
06/09/2020	ENGINEERING RESUBMITTAL
07/06/2020	ENGINEERING RESUBMITTAL

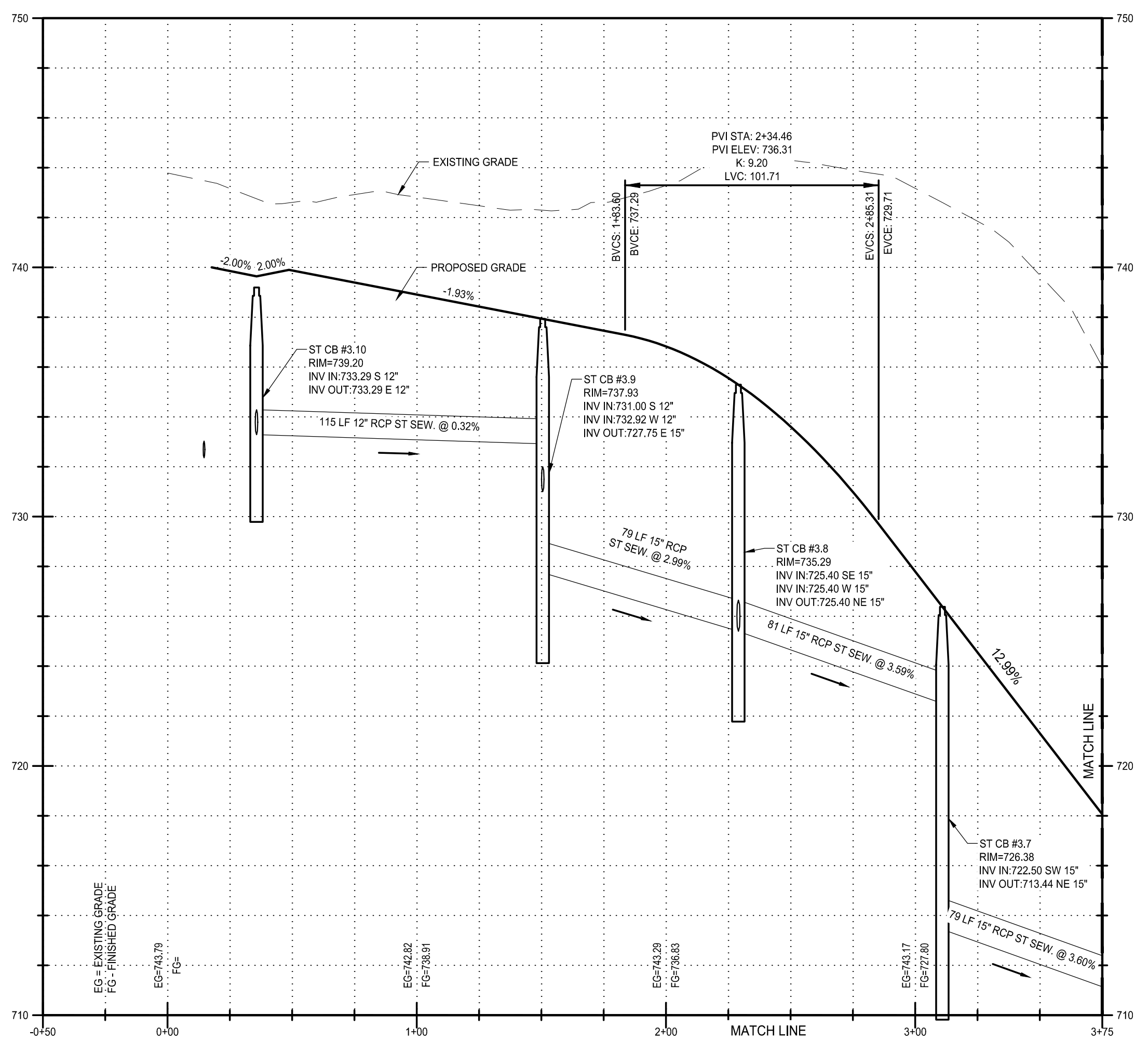


### UTILITY LEGEND:

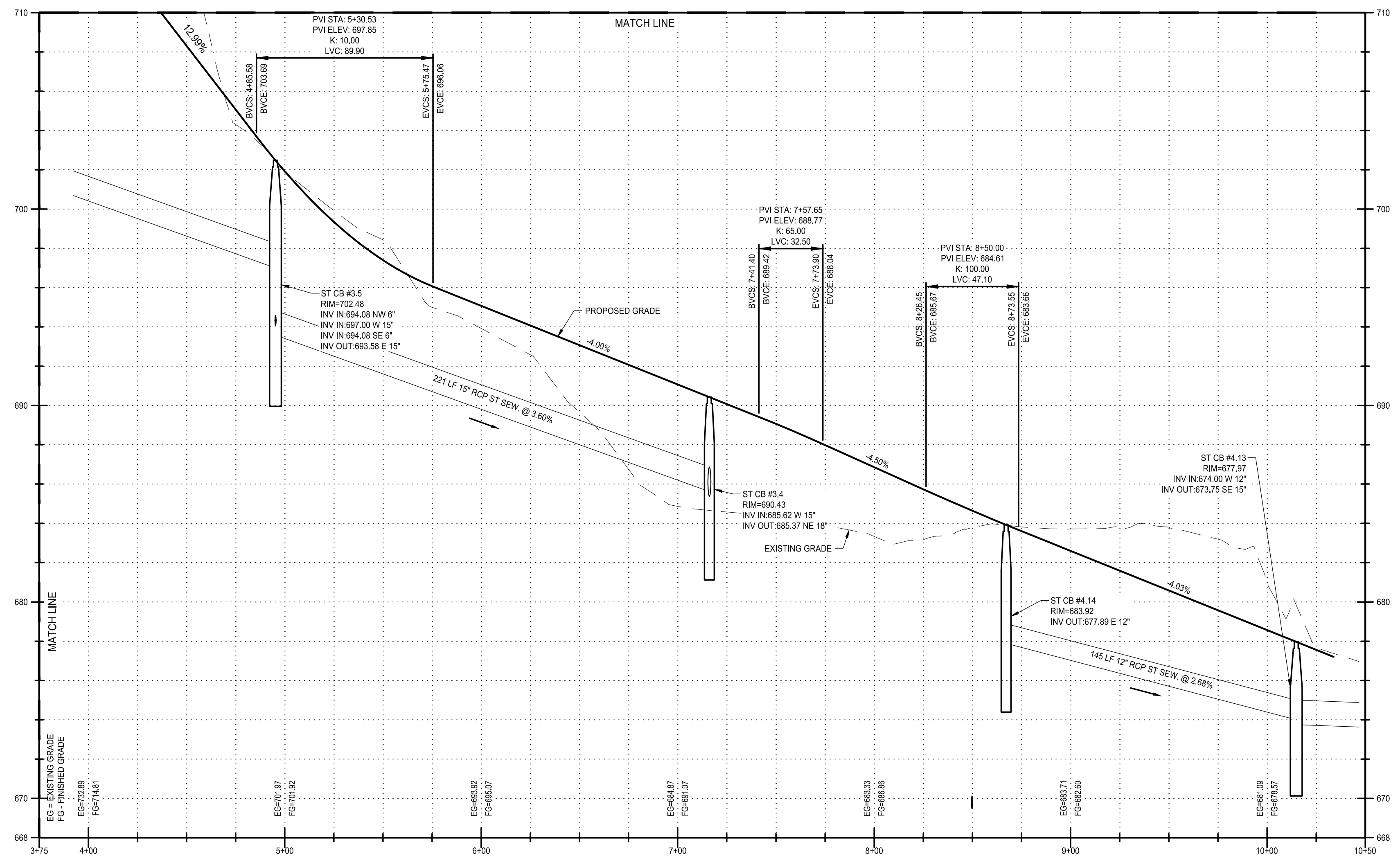
- RIPRAP
- STORM SEWER
- YARD BASIN
- CATCH BASIN
- STORM MANHOLE
- HYDRANT
- CURB STOP AND BOX
- WATER MAIN
- GATE WELL
- SANITARY SEWER
- SANITARY SEWER MANHOLE
- CLEANOUT



E. ROAD PLAN  
SCALE: 1" = 40' HORIZ



CABOT DRIVE PROFILE  
1" = 4' VERTICAL  
1" = 40' HORIZONTAL



CABOT DRIVE PROFILE  
1" = 4' VERTICAL  
1" = 40' HORIZONTAL

**Not For Construction**

Copyright © Bergmann Associates, Architects, Engineers,  
Landscape Architects & Surveyors, D.P.C.

Project Manager: P. FURTAW, PE	Checked By: P. FURTAW, PE
Designed By: I. GRAHAM, PE	Drawn By: I. GRAHAM, PE
Date Revisd: NOVEMBER 9, 2018	Project Number: 12963.00

### CABOT PLAN & PROFILE

# C132

# REDWOOD ROCHESTER HILLS

E. AVON ROAD  
ROCHESTER HILLS, MI 48307  
OAKLAND COUNTY



7510 E. PLEASANT VALLEY RD  
INDEPENDENCE, OH 44131

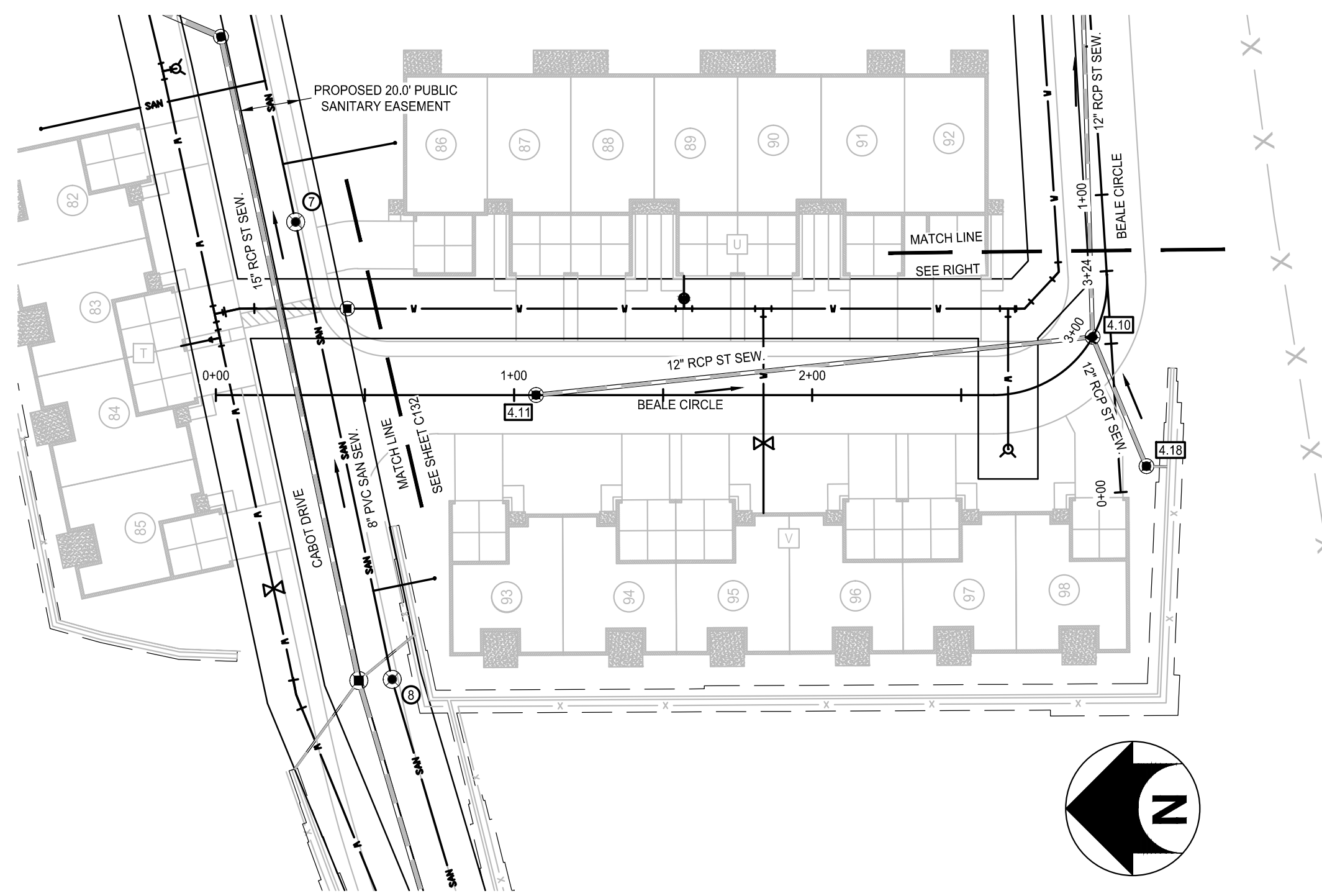


Bergmann Associates, Architects, Engineers,  
Landscape Architects & Surveyors, D.P.C.  
7050 West Saginaw Hwy.  
Suite 200  
Lansing, MI 48917

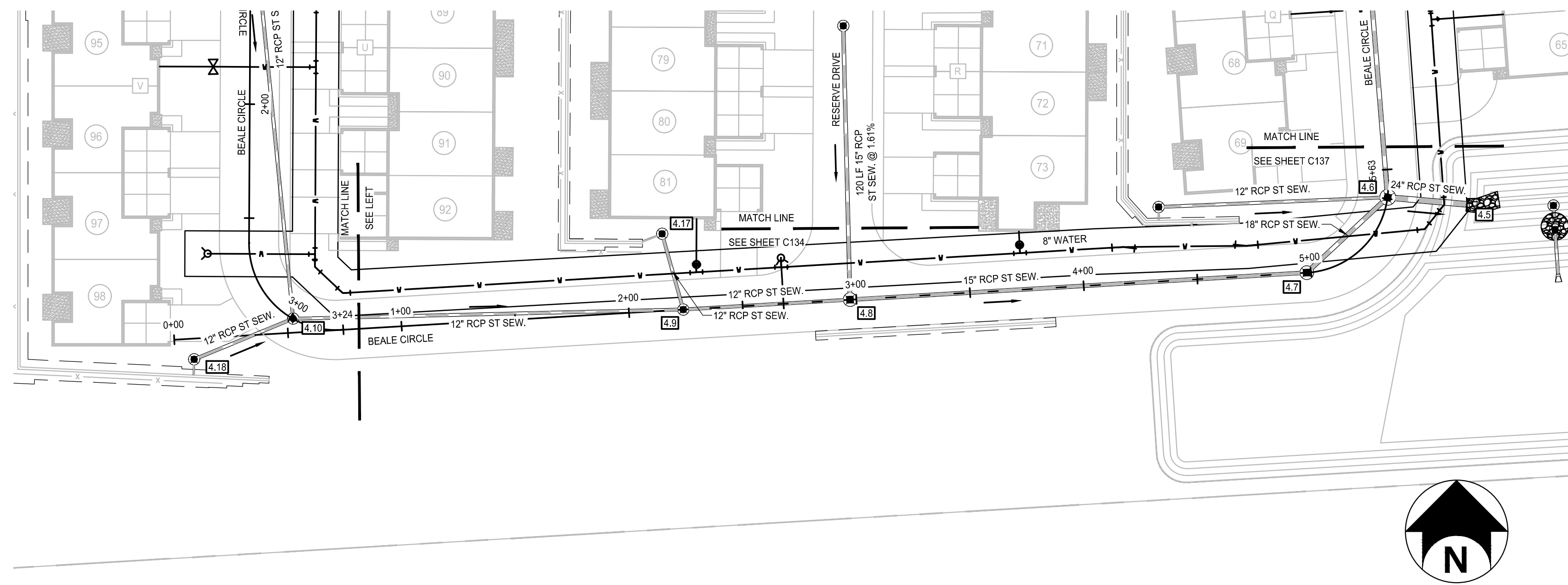
office: 517.272.9835  
fax: 517.272.9836

www.bergmannpc.com

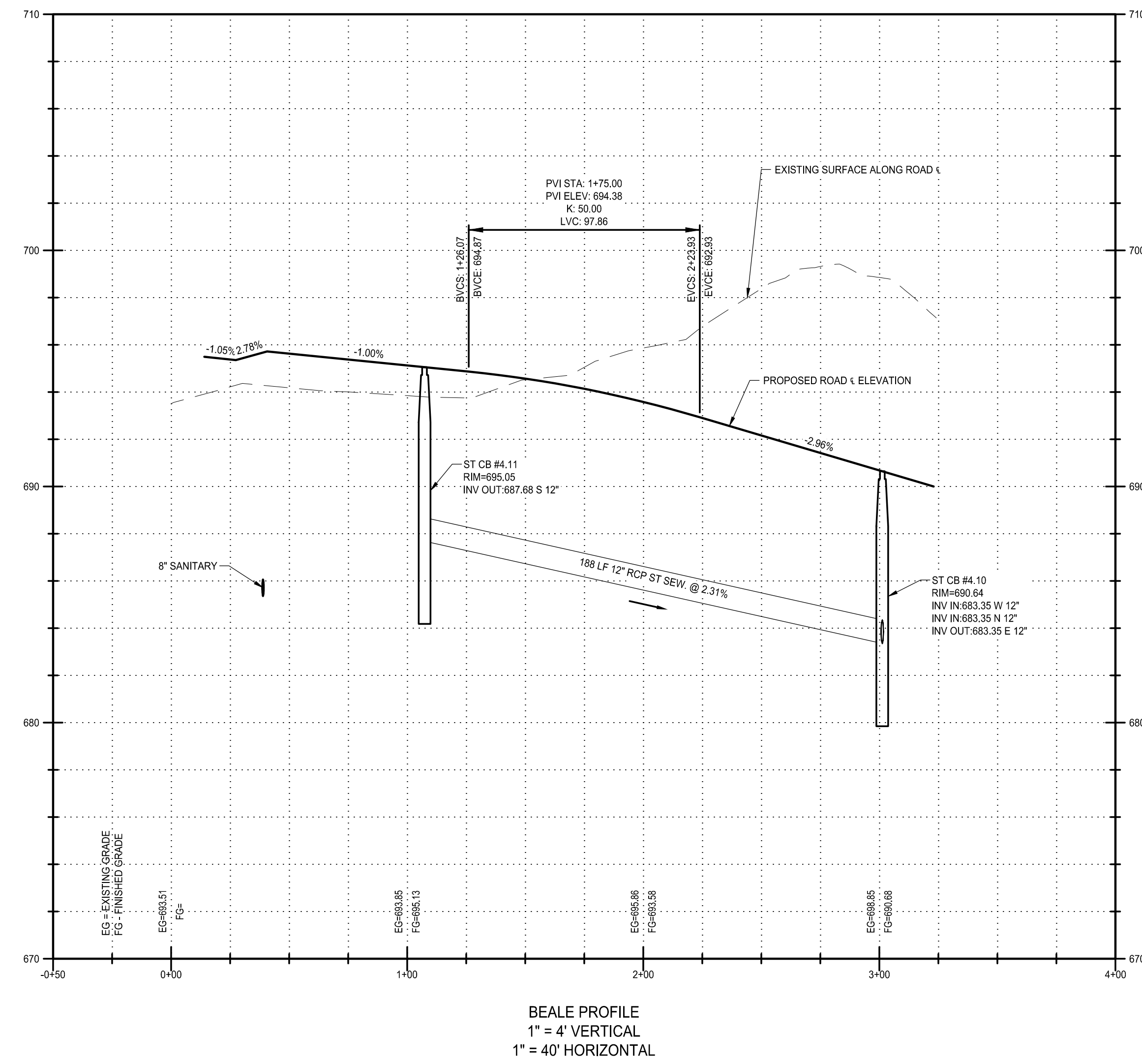
DATE	DESCRIPTION
11/16/2018	PUD REVIEW
02/04/2019	REV. PER CITY COMMENTS
03/21/2019	2ND REV. PER CITY COMMENTS
08/02/2019	3RD REV. PER CITY COMMENTS
08/22/2019	4TH REV. PER CITY COMMENTS
08/27/2019	STEP ONE PUD REVIEW
12/23/2019	CITY RESUBMITTAL
01/17/2020	PERMIT REVIEW
03/02/2020	ENGINEERING RESUBMITTAL
05/06/2020	ENGINEERING RESUBMITTAL
06/09/2020	ENGINEERING RESUBMITTAL
07/06/2020	ENGINEERING RESUBMITTAL



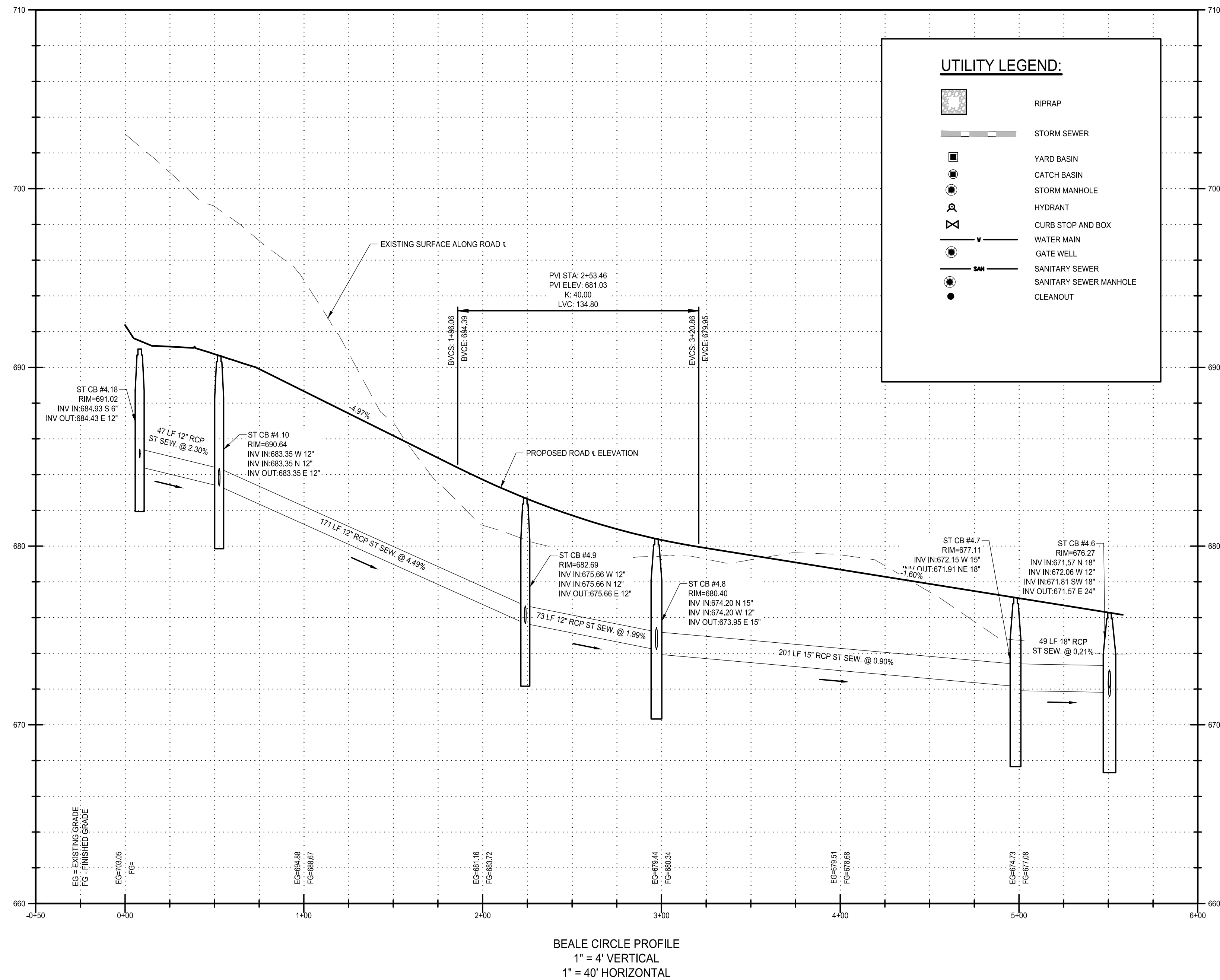
BEALE CIRCLE PLAN  
SCALE: 1" = 40' HORIZ



BEALE CIRCLE PLAN  
SCALE: 1" = 40' HORIZ



BEALE PROFILE  
1" = 4' VERTICAL  
1" = 40' HORIZONTAL



BEALE CIRCLE PROFILE  
1" = 4' VERTICAL  
1" = 40' HORIZONTAL

**UTILITY LEGEND:**

- RIPRAP
- STORM SEWER
- YARD BASIN
- CATCH BASIN
- STORM MANHOLE
- HYDRANT
- CURB STOP AND BOX
- WATER MAIN
- GATE WELL
- SANITARY SEWER
- SANITARY SEWER MANHOLE
- CLEANOUT

**Not For Construction**

Copyright © Bergmann Associates, Architects, Engineers,  
Landscape Architects & Surveyors, D.P.C.

Project Manager: P. FURTAW, PE	Checked By: P. FURTAW, PE
Designed By: I. GRAHAM, PE	Drawn By: I. GRAHAM, PE
Date Issued: NOVEMBER 9, 2018	Project Number: 12963.00

## BEALE PLAN & PROFILE

# C133

# REDWOOD ROCHESTER HILLS

E. AVON ROAD  
ROCHESTER HILLS, MI 48307  
OAKLAND COUNTY



7510 E. PLEASANT VALLEY RD  
INDEPENDENCE, OH 44131

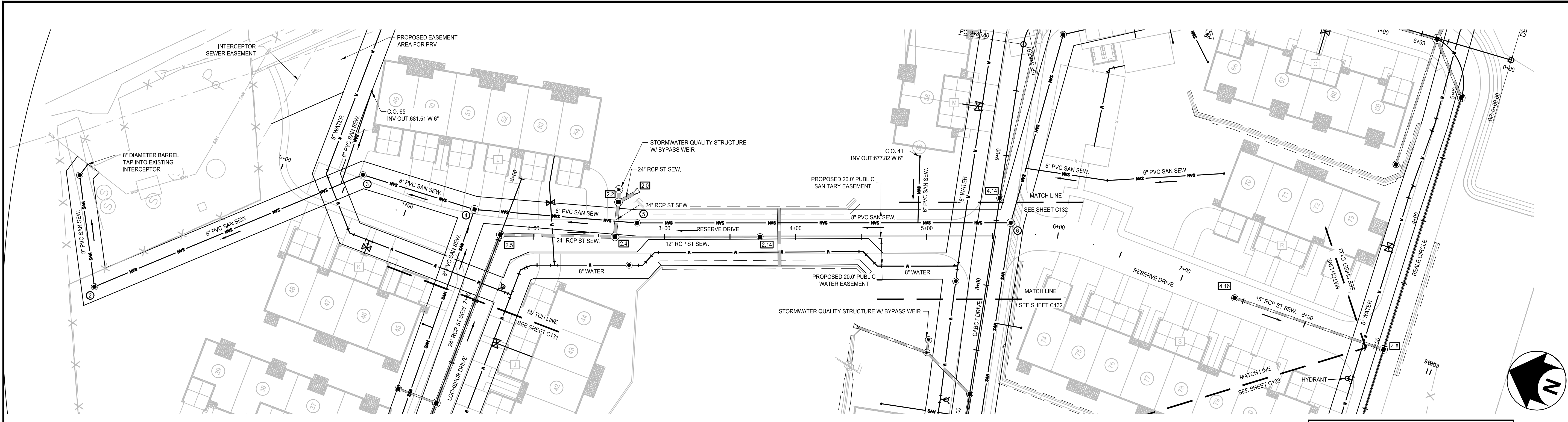


Bergmann Associates, Architects, Engineers,  
Landscape Architects & Surveyors, D.P.C.  
7050 West Saginaw Hwy.  
Suite 200  
Lansing, MI 48917

office: 517.272.9835  
fax: 517.272.9836

www.bergmannpc.com

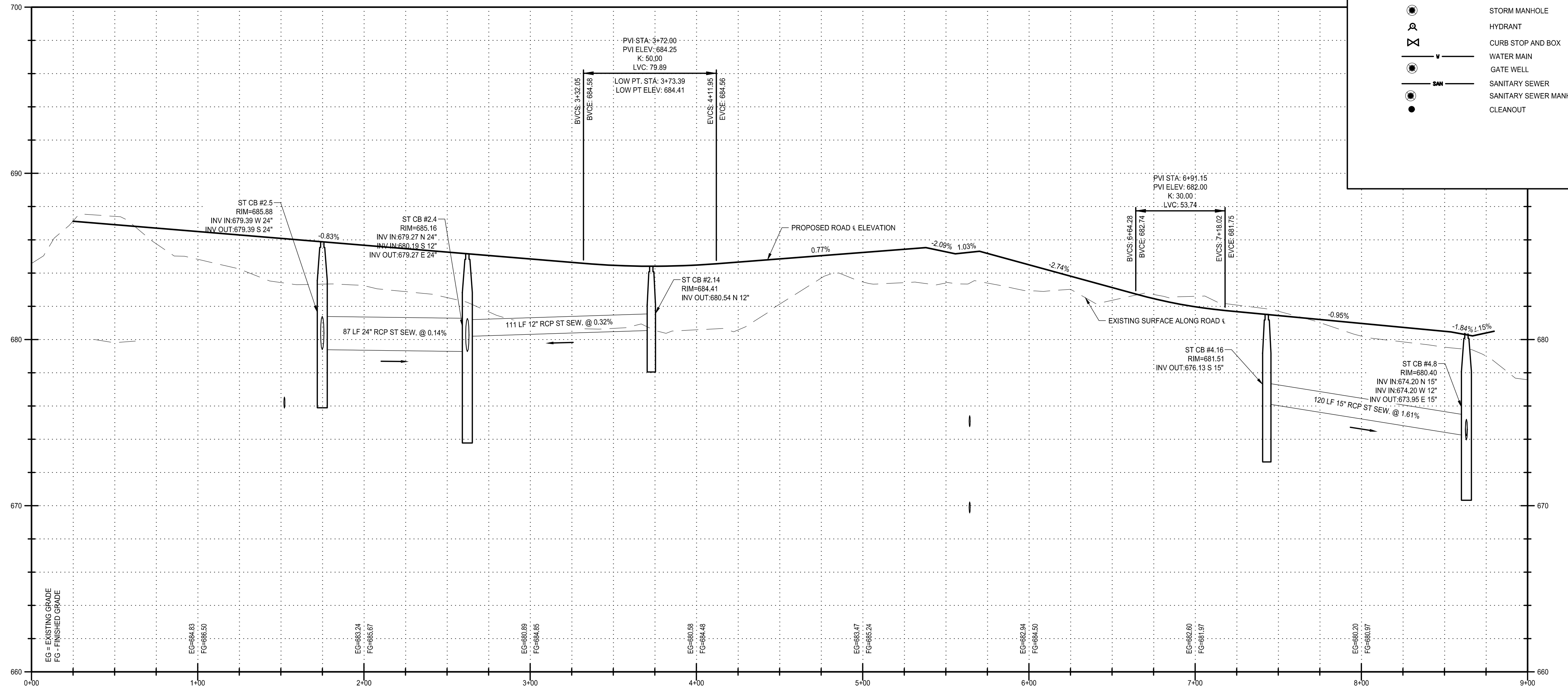
DATE	DESCRIPTION
11/16/2018	PUD REVIEW
02/04/2019	REV. PER CITY COMMENTS
03/21/2019	2ND REV. PER CITY COMMENTS
08/02/2019	3RD REV. PER CITY COMMENTS
08/22/2019	4TH REV. PER CITY COMMENTS
08/27/2019	STEP ONE PUD REVIEW
12/23/2019	CITY RESUBMITTAL
01/17/2020	PERMIT REVIEW
03/02/2020	ENGINEERING RESUBMITTAL
05/06/2020	ENGINEERING RESUBMITTAL
06/09/2020	ENGINEERING RESUBMITTAL
07/08/2020	ENGINEERING RESUBMITTAL



RESERVE DRIVE PLAN  
SCALE: 1" = 40' HORZ

**UTILITY LEGEND:**

- RIPRAP
- STORM SEWER
- YARD BASIN
- CATCH BASIN
- STORM MANHOLE
- HYDRANT
- CURB STOP AND BOX
- WATER MAIN
- GATE WELL
- SANITARY SEWER
- SANITARY SEWER MANHOLE
- CLEANOUT



RESERVE DRIVE PROFILE  
1" = 4' VERTICAL  
1" = 40' HORIZONTAL

*Not For Construction*

Copyright © Bergmann Associates, Architects, Engineers,  
Landscape Architects & Surveyors, D.P.C.

Prepared By: P. FURTAW, PE	Checked By: P. FURTAW, PE
Designed By: I. GRAHAM, PE	Drawn By: I. GRAHAM, PE
Date Plotted: NOVEMBER 9, 2018	Project Number: 12963.00

## RESERVE PLAN & PROFILE

# C134

7/6/2020 11:59 AM C:\Redwood Living\012963.00 REDWOOD - ROCHESTER HILLS\01 DWG\K1 Civil\_PLOT FILES\CD14 RESERVE PLAN & PROFILE.dwg

# REDWOOD ROCHESTER HILLS

E. AVON ROAD  
ROCHESTER HILLS, MI 48307  
OAKLAND COUNTY



7510 E. PLEASANT VALLEY RD  
INDEPENDENCE, OH 44131

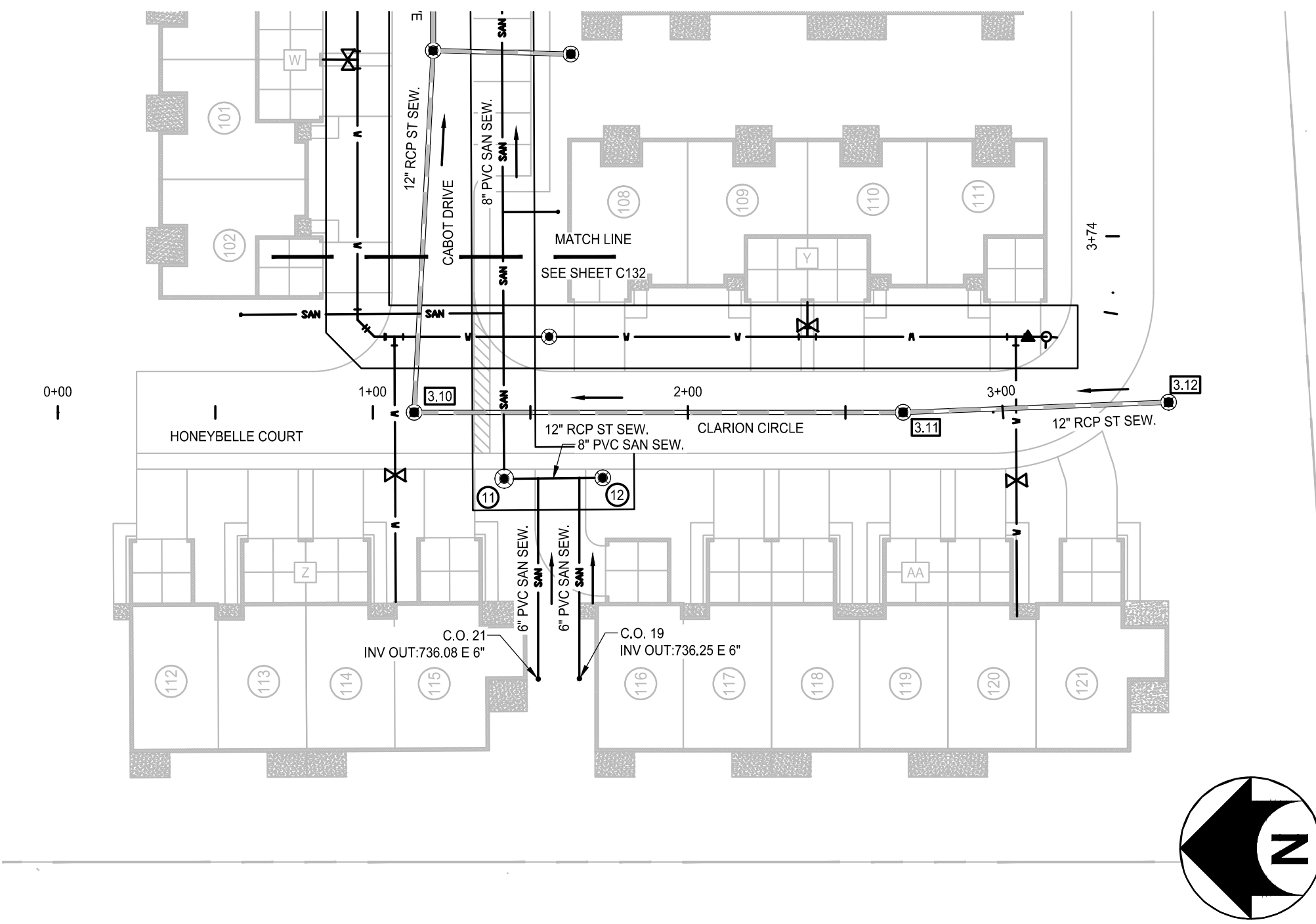


Bergmann Associates, Architects, Engineers,  
Landscape Architects & Surveyors, D.P.C.  
7050 West Saginaw Hwy.  
Suite 200  
Lansing, MI 48917

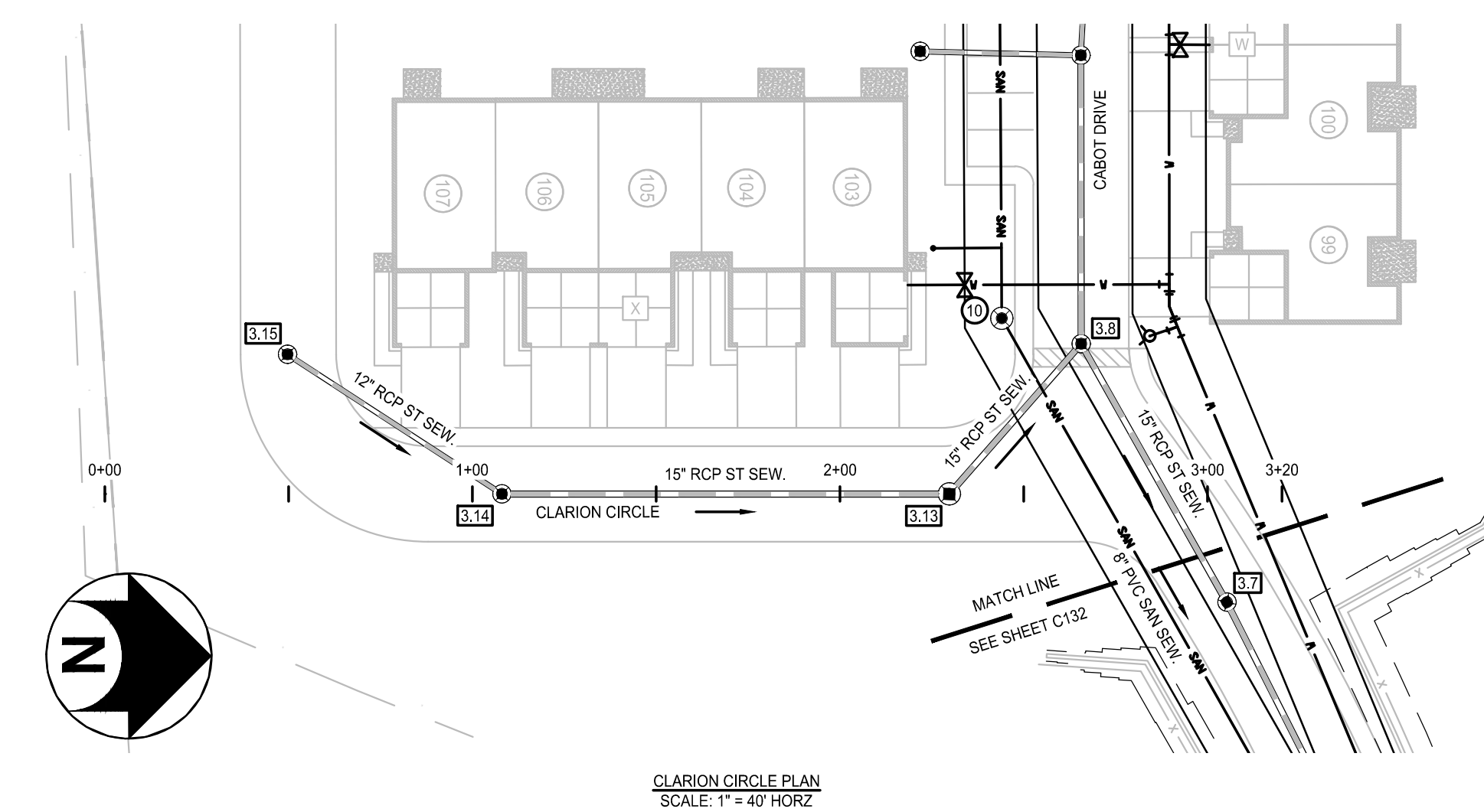
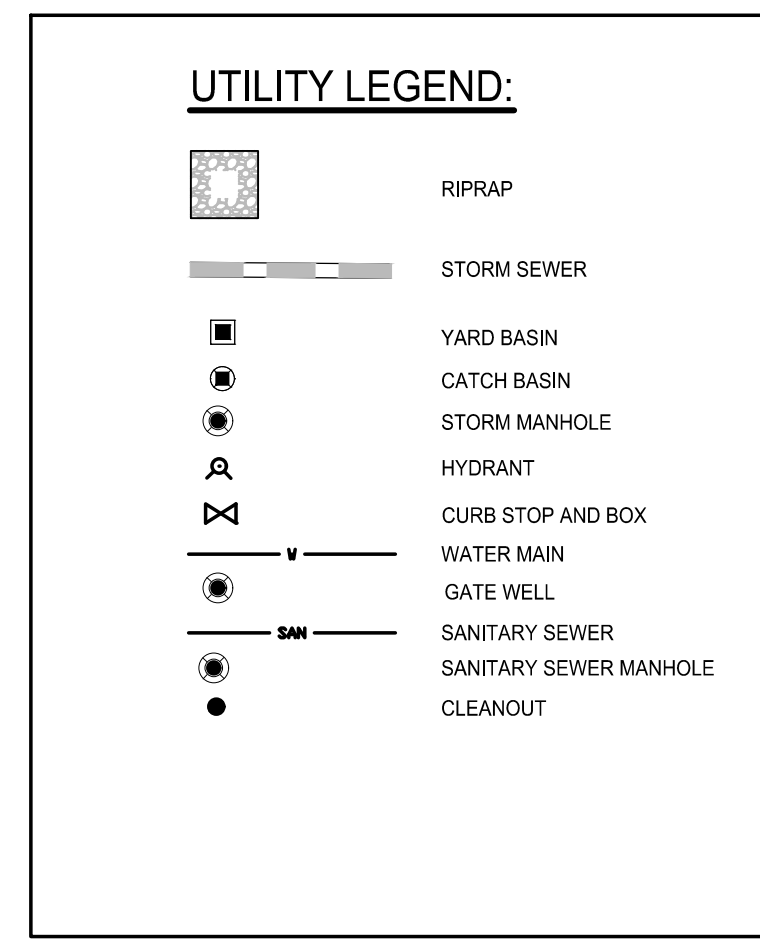
office: 517.272.9835  
fax: 517.272.9836

www.bergmannpc.com

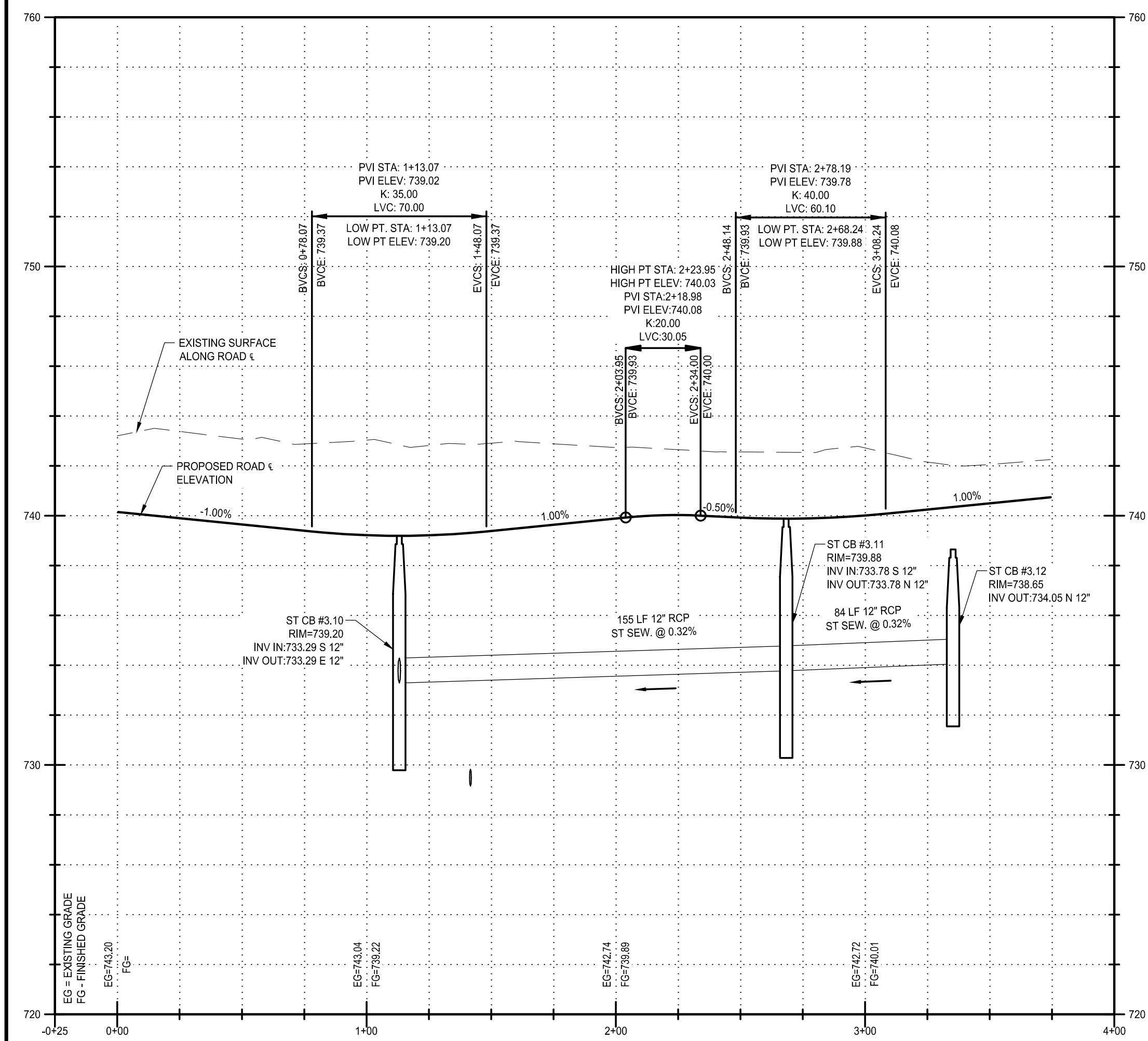
DATE	DESCRIPTION
11/16/2018	PUD REVIEW
02/04/2019	REV. PER CITY COMMENTS
03/21/2019	2ND REV. PER CITY COMMENTS
08/02/2019	3RD REV. PER CITY COMMENTS
08/22/2019	4TH REV. PER CITY COMMENTS
08/27/2019	STEP ONE PUD REVIEW
12/23/2019	CITY RESUBMITTAL
01/17/2020	PERMIT REVIEW
03/02/2020	ENGINEERING RESUBMITTAL
05/06/2020	ENGINEERING RESUBMITTAL
06/09/2020	ENGINEERING RESUBMITTAL
07/06/2020	ENGINEERING RESUBMITTAL



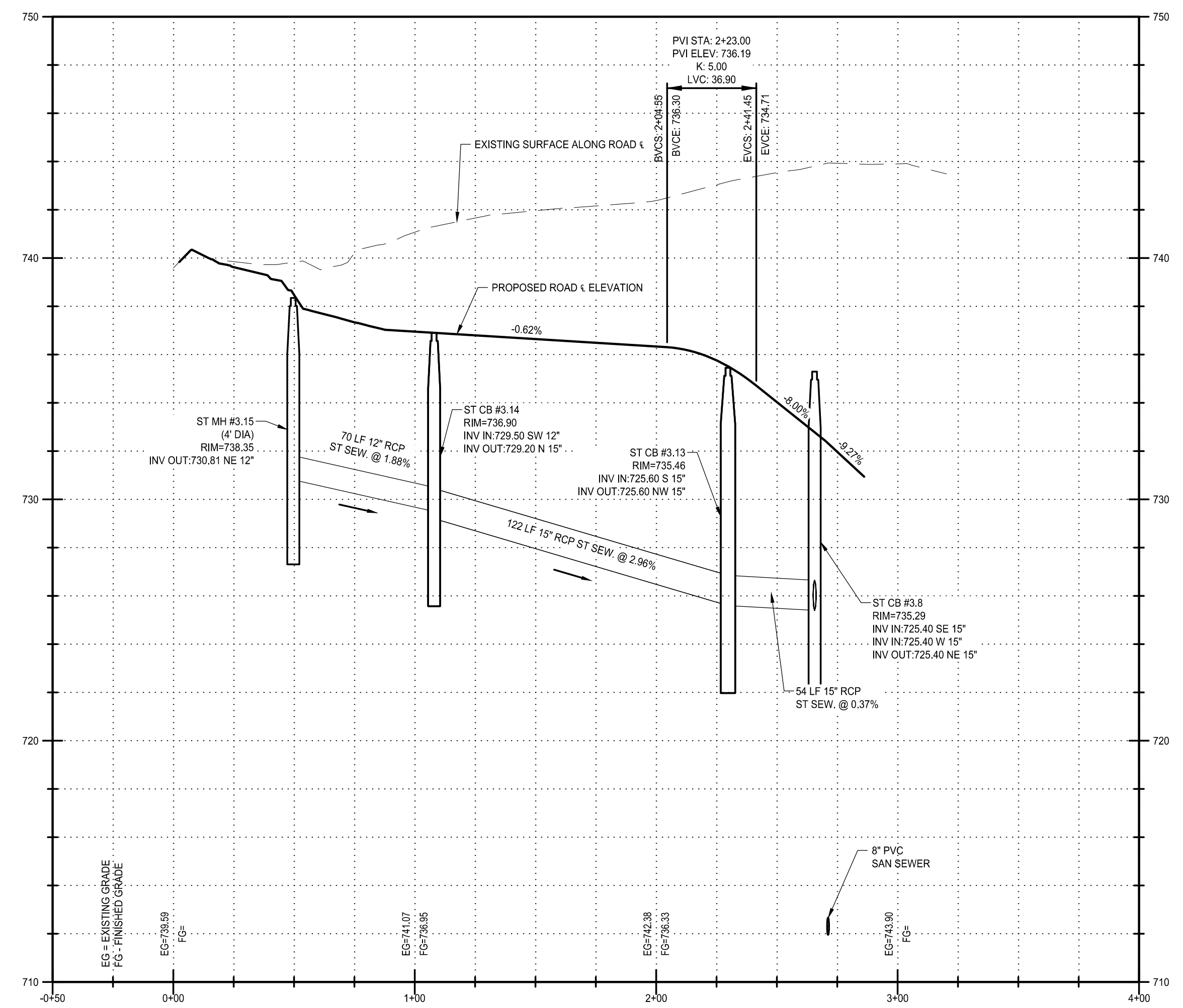
CLARION CIRCLE & HONEYBELLE COURT PLAN  
SCALE: 1" = 40' HORIZ



CLARION CIRCLE PLAN  
SCALE: 1" = 40' HORIZ



HONEYBELLE COURT PROFILE  
1" = 4" VERTICAL  
1" = 40" HORIZONTAL



CLARION CIRCLE PROFILE  
1" = 4" VERTICAL  
1" = 40" HORIZONTAL

*Not For Construction*

Copyright © Bergmann Associates, Architects, Engineers,  
Landscape Architects & Surveyors, D.P.C.

Project Manager: P. FURTAW, PE	Checked By: P. FURTAW, PE
Designed By: I. GRAHAM, PE	Drawn By: I. GRAHAM, PE
Date Issued: NOVEMBER 9, 2018	Project Number: 12963.00

## CLARION PLAN & PROFILE

# C135