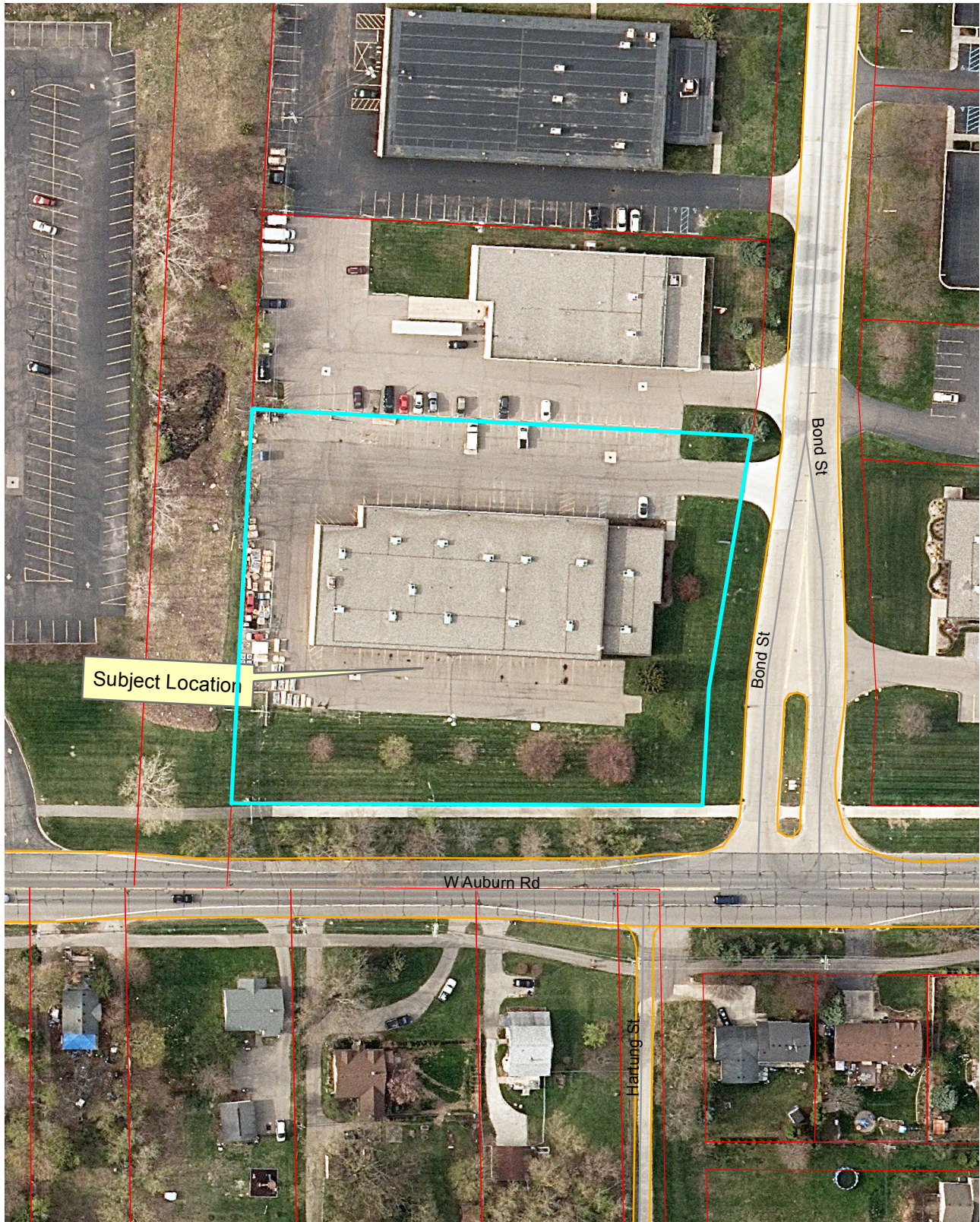


Location Map 2960 Bond St. Addition



Subject Location



Legend	
	TaxParcel W/In street name
	Right-of-Way
	Map Edge
Oakland County 2014	
	RM - R_M1_1
	RM - R_M1_2
	RM - R_M1_3

Aerial photographs as of April 2010.
TaxParcel lines were obtained on 1/2/14 from Oakland County.
Although the information provided by this map is believed to be reliable, its accuracy is not warranted in any way. The City of Rochester Hills assumes no liability for any claims arising from the use of this map.

1/2/15

1 inch = 104 feet