

# BUILDER NOTES

1. ALL WALLS SHALL BE FINISHED AND FINISHES SHOWN AS SHOWN.
2. ALL WALLS SHALL BE FINISHED AND FINISHES SHOWN AS SHOWN. ALL ROOMS SHALL BE FINISHED.
3. USE COLORED SHEET METAL SHALL BE SHOWN IN THE FINISHES AND FINISHES.
4. FLOOR AND FLOOR FINISHES, FINISHES, ELECTRICAL, MECHANICAL, AND FINISHES SHALL BE SHOWN AS SHOWN.
5. VERIFY ALL CEILING JOISTS AND TRUSS SYSTEMS.
6. VERIFY THAT THE 1" GROUND IS BE SHOWN BY OWNER.
7. VERIFY THAT THE 1" GROUND IS BE SHOWN BY OWNER.
8. ALL MECH. ROOMS SHALL BE FINISHED AS SHOWN.
9. FOR SHOP ALL CEILING AND CEILING FINISHES, FLOORING, AND MECH. FINISHES SHALL BE SHOWN AS SHOWN.
10. VERIFY ALL FINISHES TO BE SHOWN.
11. ALL CEILING JOISTS SHALL BE SHOWN AS SHOWN AND FINISHES SHALL BE SHOWN AS SHOWN.

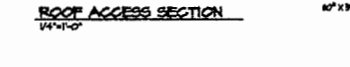
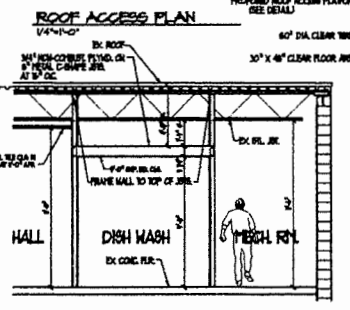
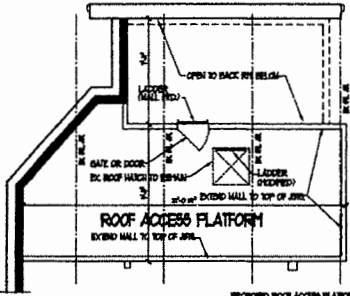
# CODE DATA

GOVERNING CODES	MICHIGAN BUILDING CODE - 2015 MICHIGAN PLUMBING CODE - 2015 MICHIGAN MECHANICAL CODE - 2015 I.L.C. - 2017 1/2 PART 8 EDITION AMENDMENTS MICHIGAN ELECTRICAL CODE 2015 CHAPTERS 1-4 AND IBC 2015 CHAPTER 13 INTERNATIONAL FIRE CODE - 2015 IFC (PER IBC 2015) FIRE SUPPRESSION - NFPA 13 (2013) FIRE ALARMS - NFPA 72 (2013), EDITION 8000 - NFPA 17 (2013)
DESCRIPTION OF WORK	REPAIR AND RENOVATION OF AN EXISTING MEAT LOBBY SPACE WITH AN EXISTING COMMERCIAL BUILDING
PROPOSED USE	COMMERCIAL BUSINESS / FOOD SERVICE
USE GROUP	A-2 / 3-1 MEED USE, NON-SEPARATED
TYPE OF CONSTRUCTION	CONSTRUCTION TYPE 5B - NON PROTECTED
ORDER LEASE AREA	3770 SQ. FT.
OCCUPANT LOAD	CHANGING ROOM AREA - 1780 NET SQ. FT. / 150 - 110 (110 PROPOSED) BUSINESS AREA / OFFICE - 90 GROSS SQ. FT. / 100 - 4 KITCHEN / CASH - 880 GROSS SQ. FT. / 300 - 4 STORAGE / MECH. - 340 GROSS SQ. FT. / 300 - 2 TOTAL OCCUPANCY - 125
MEANS OF EGRESS	2 MEANS OF EGRESS ARE REQUIRED (MIN. 500 OCCUPANTS / 200' TRAVEL DISTANCE) 2 MEANS OF EGRESS ARE PROVIDED MINIMUM EGRESS WIDTH SHALL BE 44" FOR AN OCCUPANT LOAD MORE THAN 50 OCCUPANTS
FIRE PROTECTION SYSTEM	PROPOSED LEASE SPACE TO BE FULLY SPRINKLERED 1/2" DEFERRED SUBSTITUTION - DETERMINED BY OTHERS FIRE EXTINGUISHERS TO BE PROVIDED FOR CODE AND FIRE MARSHAL REQUIREMENTS
MEDICAL SYSTEM	SEE PROPOSED HVAC ENGINEERING PLANS (BY OTHERS)
ELECTRICAL SYSTEM	SEE PROPOSED ELECTRICAL ENGINEERING PLANS (BY OTHERS)
PLUMBING SYSTEM	SEE PROPOSED PLUMBING ENGINEERING PLANS (BY OTHERS) 2 PUBLIC TOILET ROOMS (1 MENS / 1 FEMALE) SHOW RACK, 1/2" THICK CLEVER @ 2' SPACINGS 4 HAND SINKS, 1 JANITORY SINK, 2 FOOD PREP SINKS 2 3-COMPARTMENT SINKS, 1 DUMP SINK DRAINING FOUNTAIN NOT PROVIDED - BUSINESS SHALL COMPLY W/ 2015 MPC SECTION 410.4 (FRESH DRINKING WATER TO BE PROVIDED BY RESTAURANT)
KITCHEN & BAR DESIGN	SEE PROPOSED EQUIPMENT DIMENSIONS & SPECIFICATIONS (BY OTHERS)
EMERGENCY LIGHTING	PROVIDE EMERGENCY LIGHTING AND EXIT MARKS AS REQUIRED TO DIRECT THE MEANS OF EGRESS VERIFY LOCATIONS BY FIELD WITH BUILDING INSPECTOR AND FIRE MARSHAL PRIOR TO FINAL INSPECTION.
FINISHES & ETC	ALL INTERIOR FINISHES SHALL COMPLY WITH IBC CHAPTER 6

### SEATING SUMMARY

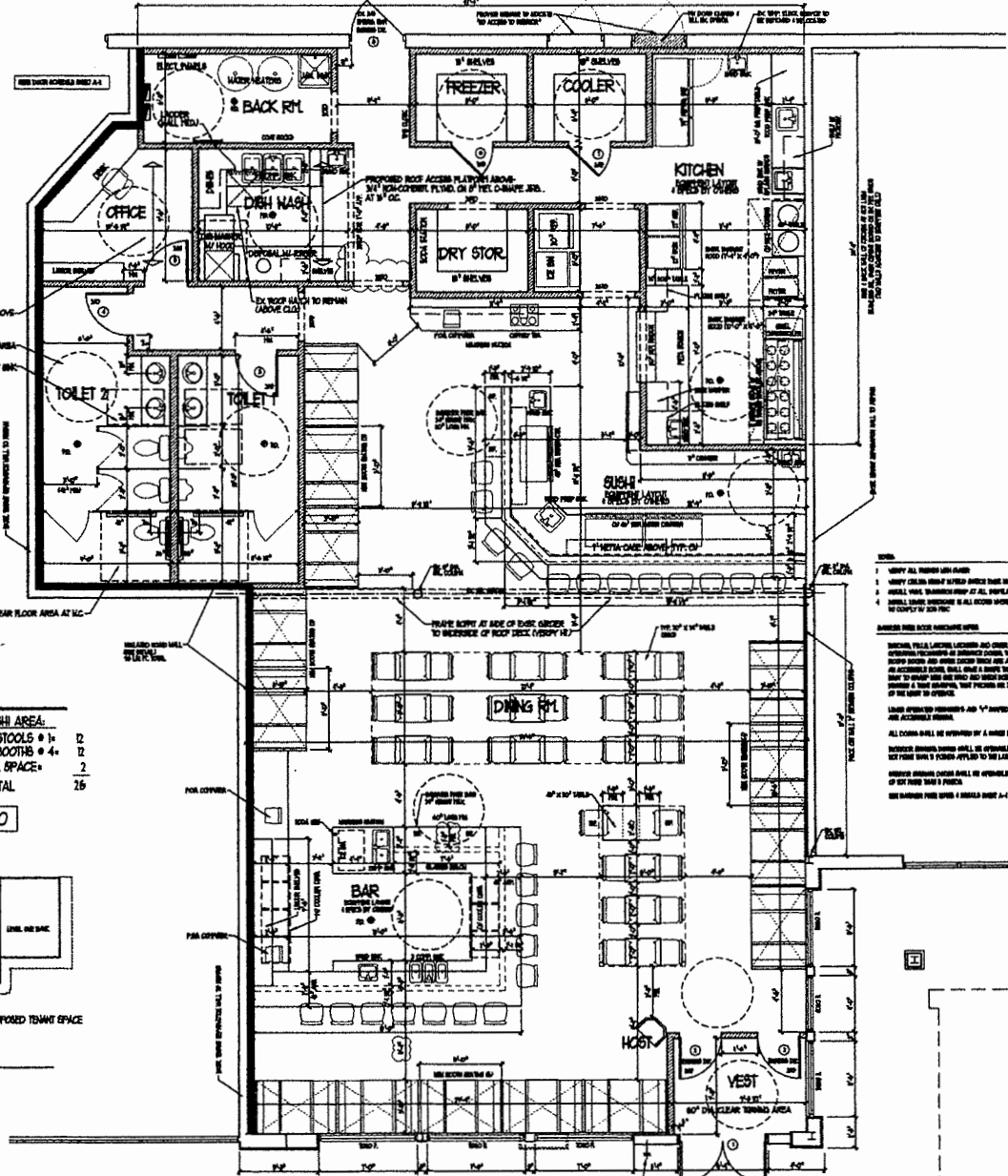
BAR AREA	DINING AREA	SUSHI AREA
12 STOOLS @ 1h	6 BOOTHS @ 4h	12 STOOLS @ 1h
5 BOOTHS @ 4h	13 TABLES @ 2h	3 BOOTHS @ 4h
B.F. SPACE @ 2		B.F. SPACE @ 2
<b>TOTAL</b>	<b>TOTAL</b>	<b>TOTAL</b>
34	50	26

**TOTAL RESTAURANT SEATING = 110**  
MIN. BARRIER FREE (5%) = 6 (6 PROVIDED)



### LEGEND

- 1. 1/2" THICK CLEVER @ 2' SPACINGS
- 2. 3-COMPARTMENT SINKS, 1 DUMP SINK
- 3. 1/2" THICK CLEVER @ 2' SPACINGS
- 4. 1/2" THICK CLEVER @ 2' SPACINGS
- 5. 1/2" THICK CLEVER @ 2' SPACINGS
- 6. 1/2" THICK CLEVER @ 2' SPACINGS
- 7. 1/2" THICK CLEVER @ 2' SPACINGS
- 8. 1/2" THICK CLEVER @ 2' SPACINGS
- 9. 1/2" THICK CLEVER @ 2' SPACINGS
- 10. 1/2" THICK CLEVER @ 2' SPACINGS
- 11. 1/2" THICK CLEVER @ 2' SPACINGS
- 12. 1/2" THICK CLEVER @ 2' SPACINGS
- 13. 1/2" THICK CLEVER @ 2' SPACINGS
- 14. 1/2" THICK CLEVER @ 2' SPACINGS
- 15. 1/2" THICK CLEVER @ 2' SPACINGS
- 16. 1/2" THICK CLEVER @ 2' SPACINGS
- 17. 1/2" THICK CLEVER @ 2' SPACINGS
- 18. 1/2" THICK CLEVER @ 2' SPACINGS
- 19. 1/2" THICK CLEVER @ 2' SPACINGS
- 20. 1/2" THICK CLEVER @ 2' SPACINGS
- 21. 1/2" THICK CLEVER @ 2' SPACINGS
- 22. 1/2" THICK CLEVER @ 2' SPACINGS
- 23. 1/2" THICK CLEVER @ 2' SPACINGS
- 24. 1/2" THICK CLEVER @ 2' SPACINGS
- 25. 1/2" THICK CLEVER @ 2' SPACINGS
- 26. 1/2" THICK CLEVER @ 2' SPACINGS
- 27. 1/2" THICK CLEVER @ 2' SPACINGS
- 28. 1/2" THICK CLEVER @ 2' SPACINGS
- 29. 1/2" THICK CLEVER @ 2' SPACINGS
- 30. 1/2" THICK CLEVER @ 2' SPACINGS
- 31. 1/2" THICK CLEVER @ 2' SPACINGS
- 32. 1/2" THICK CLEVER @ 2' SPACINGS
- 33. 1/2" THICK CLEVER @ 2' SPACINGS
- 34. 1/2" THICK CLEVER @ 2' SPACINGS
- 35. 1/2" THICK CLEVER @ 2' SPACINGS
- 36. 1/2" THICK CLEVER @ 2' SPACINGS
- 37. 1/2" THICK CLEVER @ 2' SPACINGS
- 38. 1/2" THICK CLEVER @ 2' SPACINGS
- 39. 1/2" THICK CLEVER @ 2' SPACINGS
- 40. 1/2" THICK CLEVER @ 2' SPACINGS
- 41. 1/2" THICK CLEVER @ 2' SPACINGS
- 42. 1/2" THICK CLEVER @ 2' SPACINGS
- 43. 1/2" THICK CLEVER @ 2' SPACINGS
- 44. 1/2" THICK CLEVER @ 2' SPACINGS
- 45. 1/2" THICK CLEVER @ 2' SPACINGS
- 46. 1/2" THICK CLEVER @ 2' SPACINGS
- 47. 1/2" THICK CLEVER @ 2' SPACINGS
- 48. 1/2" THICK CLEVER @ 2' SPACINGS
- 49. 1/2" THICK CLEVER @ 2' SPACINGS
- 50. 1/2" THICK CLEVER @ 2' SPACINGS
- 51. 1/2" THICK CLEVER @ 2' SPACINGS
- 52. 1/2" THICK CLEVER @ 2' SPACINGS
- 53. 1/2" THICK CLEVER @ 2' SPACINGS
- 54. 1/2" THICK CLEVER @ 2' SPACINGS
- 55. 1/2" THICK CLEVER @ 2' SPACINGS
- 56. 1/2" THICK CLEVER @ 2' SPACINGS
- 57. 1/2" THICK CLEVER @ 2' SPACINGS
- 58. 1/2" THICK CLEVER @ 2' SPACINGS
- 59. 1/2" THICK CLEVER @ 2' SPACINGS
- 60. 1/2" THICK CLEVER @ 2' SPACINGS
- 61. 1/2" THICK CLEVER @ 2' SPACINGS
- 62. 1/2" THICK CLEVER @ 2' SPACINGS
- 63. 1/2" THICK CLEVER @ 2' SPACINGS
- 64. 1/2" THICK CLEVER @ 2' SPACINGS
- 65. 1/2" THICK CLEVER @ 2' SPACINGS
- 66. 1/2" THICK CLEVER @ 2' SPACINGS
- 67. 1/2" THICK CLEVER @ 2' SPACINGS
- 68. 1/2" THICK CLEVER @ 2' SPACINGS
- 69. 1/2" THICK CLEVER @ 2' SPACINGS
- 70. 1/2" THICK CLEVER @ 2' SPACINGS
- 71. 1/2" THICK CLEVER @ 2' SPACINGS
- 72. 1/2" THICK CLEVER @ 2' SPACINGS
- 73. 1/2" THICK CLEVER @ 2' SPACINGS
- 74. 1/2" THICK CLEVER @ 2' SPACINGS
- 75. 1/2" THICK CLEVER @ 2' SPACINGS
- 76. 1/2" THICK CLEVER @ 2' SPACINGS
- 77. 1/2" THICK CLEVER @ 2' SPACINGS
- 78. 1/2" THICK CLEVER @ 2' SPACINGS
- 79. 1/2" THICK CLEVER @ 2' SPACINGS
- 80. 1/2" THICK CLEVER @ 2' SPACINGS
- 81. 1/2" THICK CLEVER @ 2' SPACINGS
- 82. 1/2" THICK CLEVER @ 2' SPACINGS
- 83. 1/2" THICK CLEVER @ 2' SPACINGS
- 84. 1/2" THICK CLEVER @ 2' SPACINGS
- 85. 1/2" THICK CLEVER @ 2' SPACINGS
- 86. 1/2" THICK CLEVER @ 2' SPACINGS
- 87. 1/2" THICK CLEVER @ 2' SPACINGS
- 88. 1/2" THICK CLEVER @ 2' SPACINGS
- 89. 1/2" THICK CLEVER @ 2' SPACINGS
- 90. 1/2" THICK CLEVER @ 2' SPACINGS
- 91. 1/2" THICK CLEVER @ 2' SPACINGS
- 92. 1/2" THICK CLEVER @ 2' SPACINGS
- 93. 1/2" THICK CLEVER @ 2' SPACINGS
- 94. 1/2" THICK CLEVER @ 2' SPACINGS
- 95. 1/2" THICK CLEVER @ 2' SPACINGS
- 96. 1/2" THICK CLEVER @ 2' SPACINGS
- 97. 1/2" THICK CLEVER @ 2' SPACINGS
- 98. 1/2" THICK CLEVER @ 2' SPACINGS
- 99. 1/2" THICK CLEVER @ 2' SPACINGS
- 100. 1/2" THICK CLEVER @ 2' SPACINGS



NOTE: ALL CONTRACTOR SHALL COMPLY WITH 2015 MICHIGAN BUILDING CODES  
**PROPOSED FLOOR PLAN**  
SCALE: 1/4" = 1'-0"

Field verify all dimensions  
DO NOT SCALE DRAWINGS!

SHEPHERD SPENCER  
ARCHITECTS, P.L.L.C.

1890 ROCHESTER RD.  
A-1