

EXHIBIT I

LEGAL DESCRIPTION: HALF RIGHT-OF-WAY

Northbrooke - A Singh Development Subdivision, a part of the Northwest 1/4 of Section 33, T.3N., R.11E., City of Rochester Hills, Oakland County, Michigan, as recorded in Liber 237 of Plats, Pages 35-40, Oakland County Records, being more particularly described as: The Westerly 30 feet of Samuel Ave (60 feet wide) South of Gilsam St (now Gilsam Ave, 60 feet wide).

LEGAL DESCRIPTION: STORM SEWER EASEMENT

Beginning at the Northeast corner of Lot #25 in the "Northbrooke - A Singh Development" Subdivision, a part of the Northwest 1/4 of Section 33, T.3N., R.11E., City of Rochester Hills, Oakland County, Michigan, as recorded in Liber 237 of Plats, Pages 35-40, Oakland County Records; thence S89°31'37" E 30.01 feet to the West line of "Meadow Creek II", part of the Northwest 1/4 of Section 33, T.3N., R.11E., City of Rochester Hills, Oakland County, Michigan, recorded in Liber 32534, Page 1, Oakland County Register of Deeds; thence S00°28'23" W 15.00 feet along the West line of "Meadow Creek II"; thence N89°31'37" W 30.01 feet; thence N00°28'23" E 15.00 feet to the Point of Beginning.

City of Rochester Hills

Department of Public Services
1000 Rochester Hills Drive
Rochester Hills, MI 48309
Ph: 248.656.4640

Sheet Title

NORTHBROOKE - A
SINGH DEVELOPMENT
STORM SEWER ESMT

City File #

E05-022

Project

SAMUEL AVE ROW VAC.

Date

1/27/2022

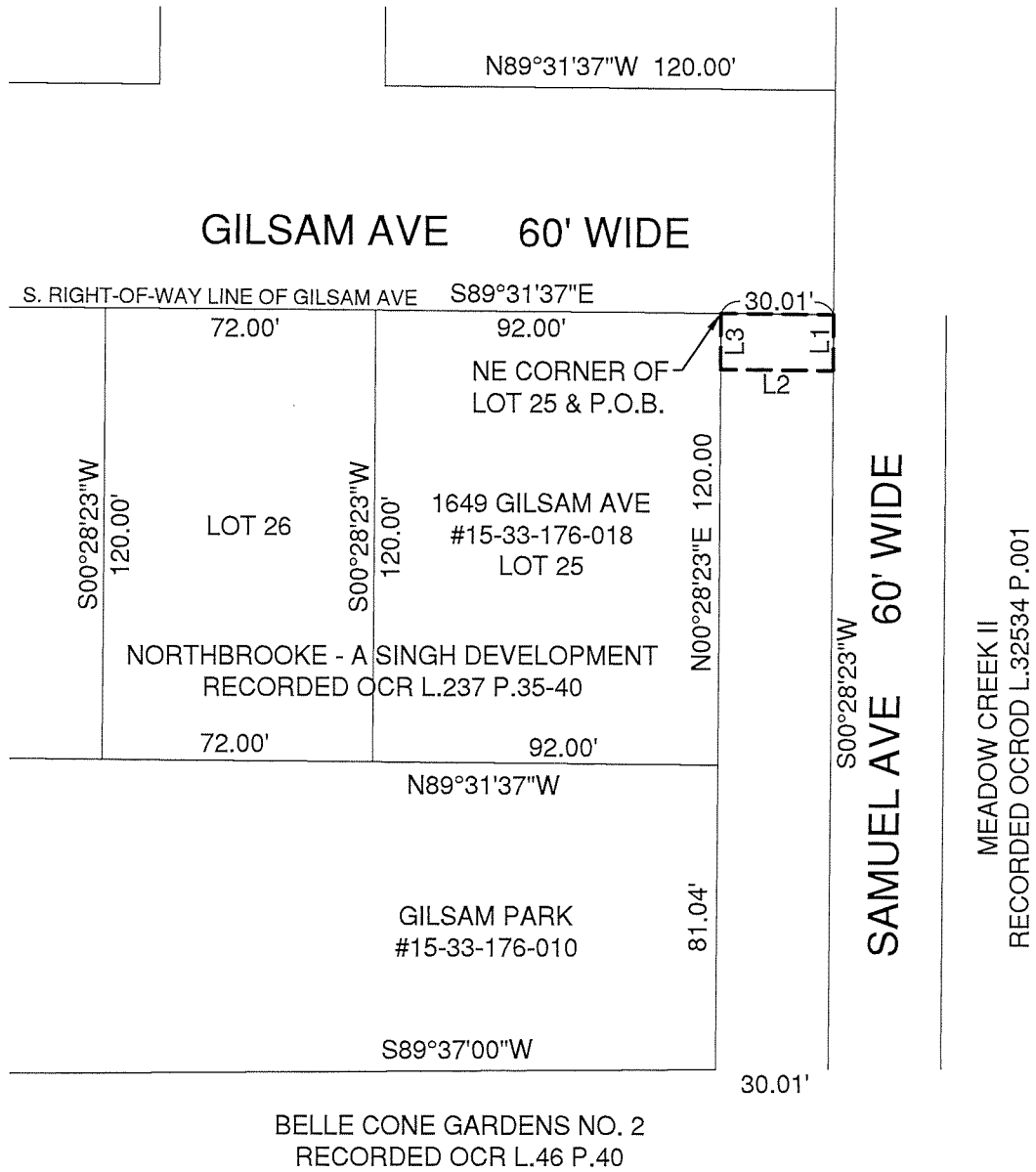
Scale

NOT TO SCALE

Sheet

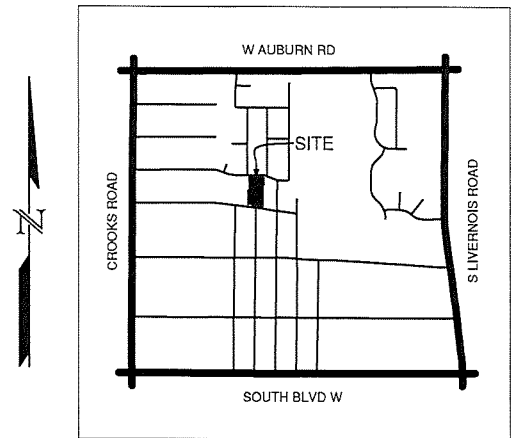
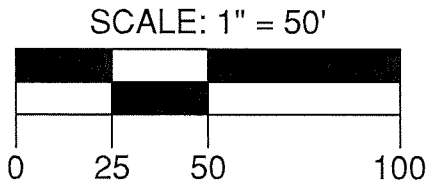
1 of 2

EXHIBIT I



BASIS OF BEARING:
SOUTH RIGHT-OF-WAY LINE OF GILSAM AVE
NORTHBROOKE - A SINGH DEVELOPMENT (L.237, P.35-40)

LINE TABLE		
NO.	BEARING	DISTANCE
1	S00°28'23"W	15.00'
2	N89°31'37"W	30.01'
3	N00°28'23"E	15.00'



LOCATION MAP
NOT TO SCALE

City of Rochester Hills
Department of Public Services
1000 Rochester Hills Drive
Rochester Hills, MI 48309
Ph: 248.656.4640

Sheet Title
**NORTHBROOKE - A
SINGH DEVELOPMENT
STORM SEWER ESMT**
City File #
E05-022

Project
SAMUEL AVE ROW VAC.
Date
1/27/2022
Scale
1"=50'

Sheet
2 of 2

EXHIBIT J

LEGAL DESCRIPTION: HALF RIGHT-OF-WAY

Meadow Creek II, part of the Northwest 1/4 of Section 33, T.3N., R.11E., City of Rochester Hills, Oakland County, Michigan, recorded in Liber 32534, Page 1, Oakland County Register of Deeds, being more particularly described as: The Easterly 30 feet of Samuel Ave (60 feet wide) South of Gilsam Ave (60 feet wide).

LEGAL DESCRIPTION: STORM SEWER EASEMENT

Commencing at the Northwest corner of Lot 117 in "Belle Cone Gardens No. 1", part of the West 1/2 of Section 33, T.3N., R.11E., City of Rochester Hills, Oakland County, Michigan, recorded in Liber 45 of Plats, Page 37, Oakland County Records; thence N00°28'23"E 200.17 feet to the Point of Beginning; thence S00°28'23"W 15.00 feet; thence N89°31'37"W 30.00 feet to the East line of "Northbrooke - A Singh Development", part of the Northwest 1/4 of Section 33, T.3N., R.11E., City of Rochester Hills, Oakland County, Michigan, recorded in Liber 237 of Plats, Pages 35-40, Oakland County Records; thence N00°28'23"E 15.00 feet along the East line of "Northbrooke - A Singh Development" to the South Right-of-Way line of Gilsam Ave (60 feet wide); thence S89°31'37"E 30.00 feet along said South Right-of-Way line to the Point of Beginning.

City of Rochester Hills

Department of Public Services
1000 Rochester Hills Drive
Rochester Hills, MI 48309
Ph: 248.656.4640

Sheet Title

MEADOW CREEK II
STORM SEWER ESMT

City File #

E05-022

Project

SAMUEL AVE ROW VAC.

Date

1/27/2022

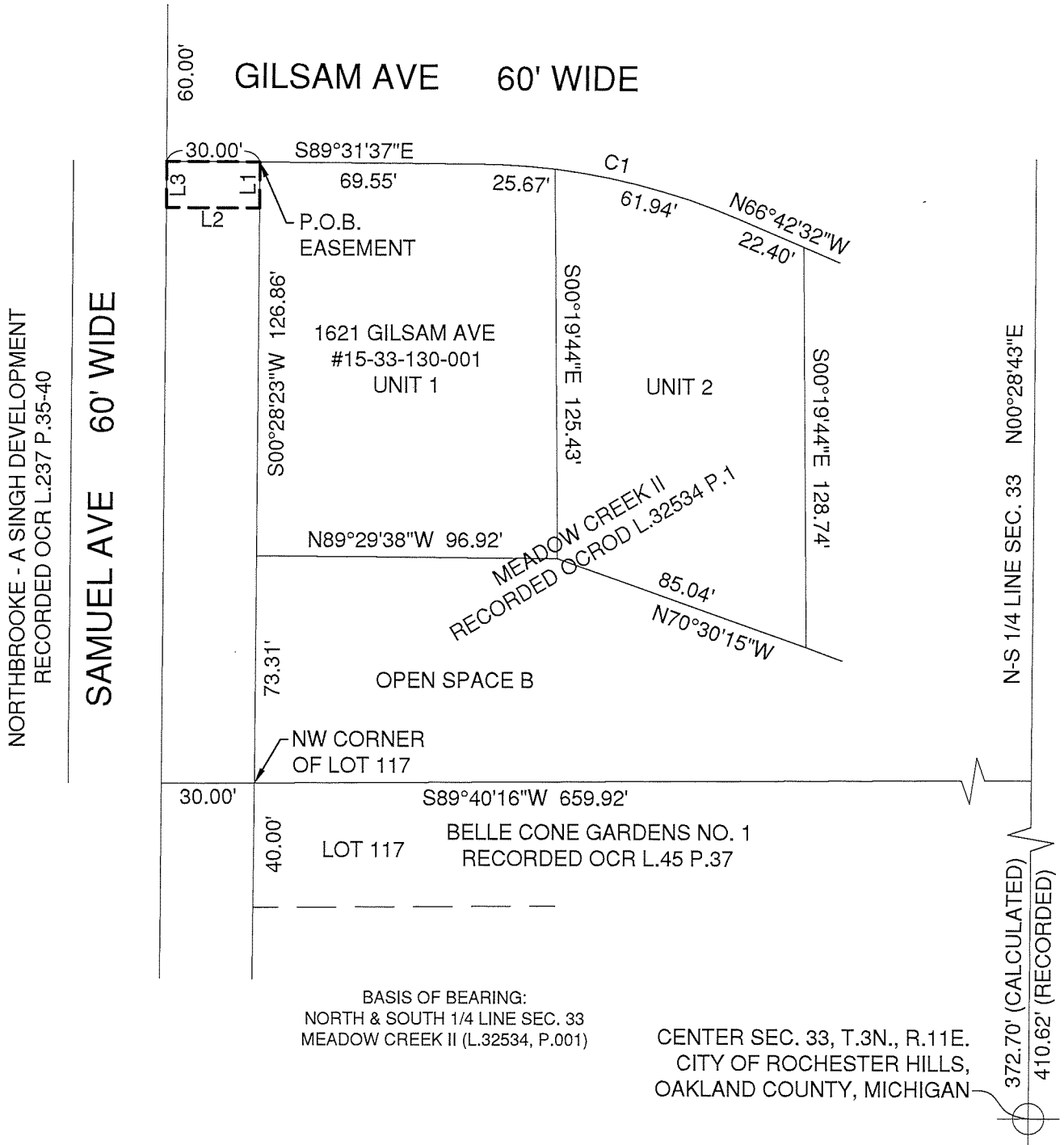
Scale

NOT TO SCALE

Sheet

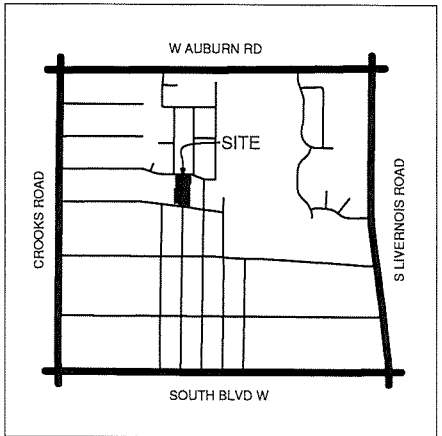
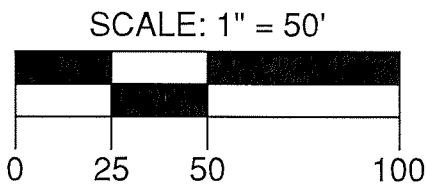
1 of 2

EXHIBIT J



LINE TABLE		
NO.	BEARING	DISTANCE
1	S00°28'23"W	15.00'
2	N89°31'37"W	30.00'
3	N00°28'23"E	15.00'

CURVE TABLE					
NO.	LENGTH	RADIUS	DELTA	CHORD BEARING	CHORD LENGTH
1	87.62'	220.00'	22°49'05"	N78°07'04"W	87.04'



City of Rochester Hills
Department of Public Services
1000 Rochester Hills Drive
Rochester Hills, MI 48309
Ph: 248.656.4640

Sheet Title
**MEADOW CREEK II
STORM SEWER ESMT**
City File #
E05-022

Project
SAMUEL AVE ROW VAC.
Date
1/27/2022
Scale
1"=50'

Sheet
2 of 2